



ARAPAHOE COUNTY

# ARAPAHOE COUNTY COMMUNITY HEALTH IMPROVEMENT PLAN 2025-2030



# Nov 2024 Agenda

- Meeting CHIP Requirements
- Grounding the CHIP in Equity and Engagement
- CHIP Components
- Refinements Made Following October BOH Meeting
- Measuring and Communicating Performance
- Next Steps and Building Assets to Support Impact

## ARAPAHOE COUNTY 2025-2030 COMMUNITY HEALTH IMPROVEMENT PLAN



# Colorado Public Health Act Requirements

Per the Colorado Public Health Act of 2008 (Section 25-1-501, CRS et. seq.):

- Examination of data about health status and risk factors in the local community
- Assess the capacity and performance of the county public health system
- Identify goals and strategies for improving the health of the local community
- Describe how representatives of the local community develop and implement the local plan
- Address how local public health agency coordinates with the state department and others within the public health system to accomplish goals and priorities identified in the statewide public health improvement plan
- Identify financial resources available to meet identified public health needs and to meet requirements for the provision of core public health services
- Not be inconsistent with the statewide public health improvement plan

# Public Health Accreditation Board Requirements

The CHIP must:

- Be developed in collaboration with the community
- Be dated within the last 5 years
- Cover the entire population that the health department is authorized to serve
- Include the following elements:
  - a. Community health priorities, objectives, strategies, measures, and time-framed targets
  - b. Policy changes needed to accomplish objectives
  - c. Individuals and organizations responsible for implementation
  - d. Measurable health outcomes or indicators
- Align with other levels of the health department and national priorities

# Shared Definitions of PHAB & Public Health Act

As recommended by the National Association of City and County Health Officials, mandated by the Colorado Public Health Act, and required for voluntary accreditation by the Public Health Accreditation Board (PHAB), which defines a plan as:

"... a long-term, systematic effort to address public health problems on the basis of the results of community health assessment activities and the community health improvement process..."

"A community health improvement plan is critical for developing policies and defining actions to target efforts that promote health. It should define the vision for the health of the community through a collaborative process.... to improve the health status of that community."

"While the health department is responsible for protecting and promoting the health of the population, it cannot be effective acting unilaterally. ...

"Engage partners and members of the community in a community health improvement process".

# CONTENTS

Welcome and Introduction .....	
Acknowledgements .....	
About Arapahoe County .....	
Mission, Vision, Goal, and Values .....	
Background of the collaborative development process .....	
Phase 1: Plan the process .....	
Phase 2: Equity and community engagement .....	
Phase 3: Conduct a community health assessment .....	
Phase 4: Assess capacity .....	
Phase 5: Prioritize issues .....	
Phase 6: Develop a plan .....	
Phase 7: Implement, promote, and monitor .....	
Phase 8: Participate in statewide public health improvement opportunities .....	
Appendix A: Community Characteristics .....	
Appendix B: Community Assets .....	
Appendix C: Alignment with State and National Objectives .....	
Appendix D: Outcome Measures .....	





# Updates Informed by October BOH Input

- Refined multiple objectives for increased measurability
- Increased staggering of target dates in recognition of capacity limitations
- Work group members by goal area to be shared in Q1
- Identified working definition of community
- Updated housing objectives



ARAPAHOE COUNTY

# A CHIP Grounded in Equity & Engagement

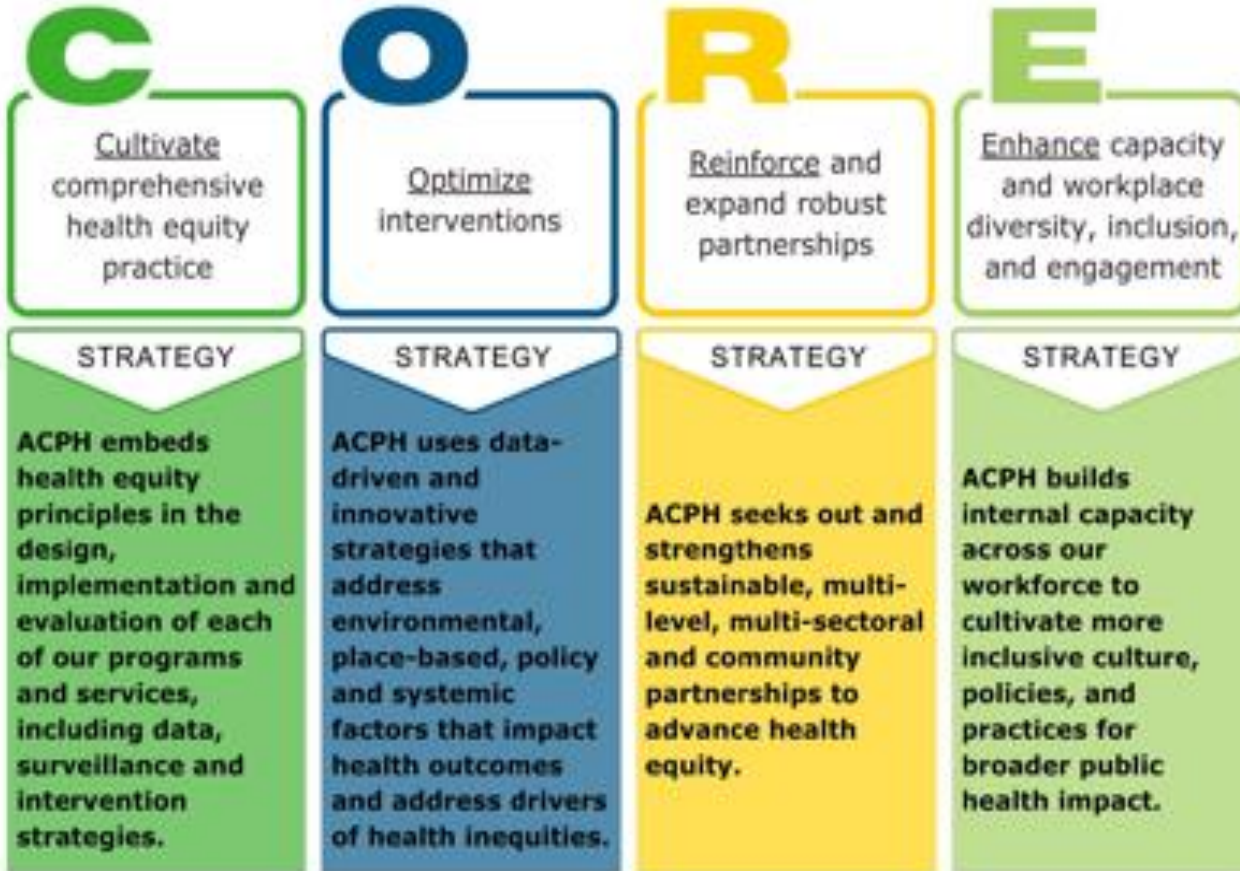
Building on ACPH Commitments



## Arapahoe County Public Health Aligning Strategic Goals

*Emphasizing Accountability, Innovation, Workforce and Community*

*CDC's CORE Commitment to Health Equity*



# Health Equity Focus Areas

- Populations
- Topic Areas
- Geography

## Health Topic Areas

Have you considered health equity through the lens of our CHIP priorities?

### Community Health Improvement Plan Priorities

#### Economic Security and Mobility



For more detailed information on the Community Health Improvement Plan Priorities, please review the 2023 County Public Health Community Assessment [here](#).

## Populations

Have you considered health equity through the lens of priority populations?

- BIPOC Communities (Black and African American, Hispanic and Latino, Native American, Alaska Native and Indigenous, Asian American, Native Hawaiian and Pacific Islander, Middle Eastern, and North African persons)
- LGBTQIA+ Communities (lesbian, gay, bisexual, transgender, queer, gender non-conforming, and non-binary persons)
- Youth
- LGBTQIA+ Youth
- Children and Youth with Special Health Care Needs (CYSHCN)
- Pregnant/post-partum persons
- Older Adults 65+
- Veterans and military families
- People with disabilities/neurodivergent people
- People facing Antisemitism, Islamophobia, religious bias and/or discrimination
- New Americans (immigrants, refugees, migrant agricultural workers, and people without documentation)
- People with limited English proficiency and non-English speaking persons
- People experiencing homelessness
- People living in rural areas
- People who are socially isolated
- People experiencing mental health distress
- People using substances
- Formerly incarcerated/detained individuals (jails, prisons, and detention facilities)
- People experiencing environmental injustice
- People accessing Medicaid/uninsured/under-insured
- People who are unemployed/living close to, at or below the federal poverty line

\*Consider **intersectionality** between and across health equity populations

**Intersectionality**: coined in 1989 by professor Kimberlé Crenshaw to describe how race, class, gender, and other individual characteristics "intersect" with one another and overlap.

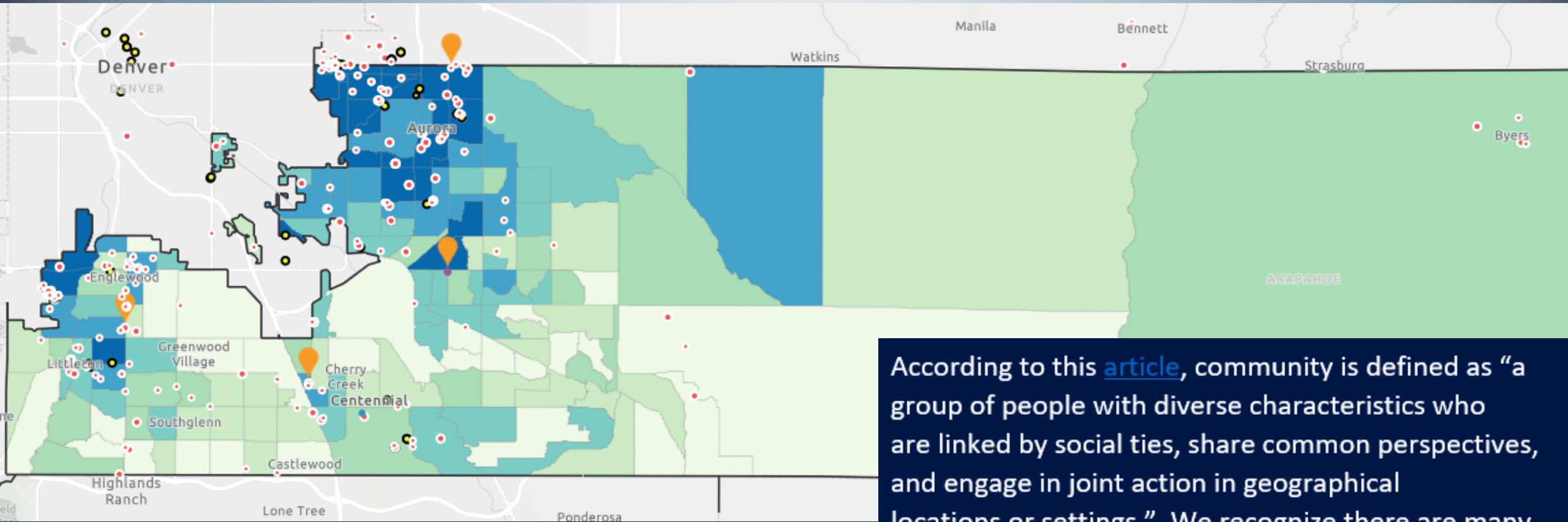
Source:  
Kimberlé Crenshaw, "Demarginalizing the Intersection of Race and Sex: A Black Feminist Critique of Antidiscrimination Doctrine, Feminist Theory and Antiracist Politics"



ARAPAHOE COUNTY

# Health Equity Focus Areas, cont.

## Geographic Areas



According to this [article](#), community is defined as “a group of people with diverse characteristics who are linked by social ties, share common perspectives, and engage in joint action in geographical locations or settings.” We recognize there are many different types of communities, and we will engage many communities as we implement the CHIP.

# Community Engagement Spectrum

While overall trend should be toward more involvement, there are no rights or wrongs. Different or multiple strategies may be used. Most critical is transparency with community members about expectations and how participation will impact decisions.

	Participation		Engagement		Partnership
	Inform	Consult	Involve	Collaborate	Shared Leadership
<b>Community Engagement Goals</b>	Provide the community with relevant information	Gather input from the community	Ensure community needs and assets are integrated into the process and inform planning	Ensure community capacity to play a role in planning and implementing decisions	Bridge the divide between community and govt by meaningfully involving community in decision-making
<b>Message to Community</b>	<i>We will keep you informed.</i>	<i>We'll keep you informed, listen to/acknowledge concerns and aspirations, tell you how your input influenced the decision.</i>	<i>We'll work with you to ensure your concerns and hopes are reflected in what is developed and tell you how input influenced decisions.</i>	<i>We look to you for direct advice in IDing solutions and we'll incorporate your recs into decisions to the max extent possible.</i>	<i>We will share the deliberation process and the making of final decisions.</i>
<b>Outcome</b>	Establish communication and outreach channels, while sharing info and providing services	Develop connections and learn about the needs and interests and perspectives of residents	Initiate partnership and increased cooperation	Increase trust and partnership building	Foster strong partnership between residents and govt, bidirectional trust affecting broader outcomes.
<b>Activities</b>	Fact sheets, Open Houses, Presentations, Billboards, Videos	Public Comment, Focus Groups, Community Forums, Surveys	Community Organizing & Advocacy, House Meetings, Interactive Workshops, Rolling Community Forums	MOUs with CBOs, Community Organizing, Citizen Advisory Committees, Open Forums	Community-Driven Planning, Consensus Building, Participatory Action Research, Participatory Budgeting, Cooperatives

# Liberatory Design

Liberatory Design is an approach to addressing equity challenges and change efforts in complex systems. It is grounded in human-centered design, complex systems theory, and deep equity practice (e.g., restorative practices)

Liberatory Mindsets (right)

We will incorporate liberatory design principles, mindsets and modes into the CHIP implementation process with exercises designed for the CHIP workgroups.



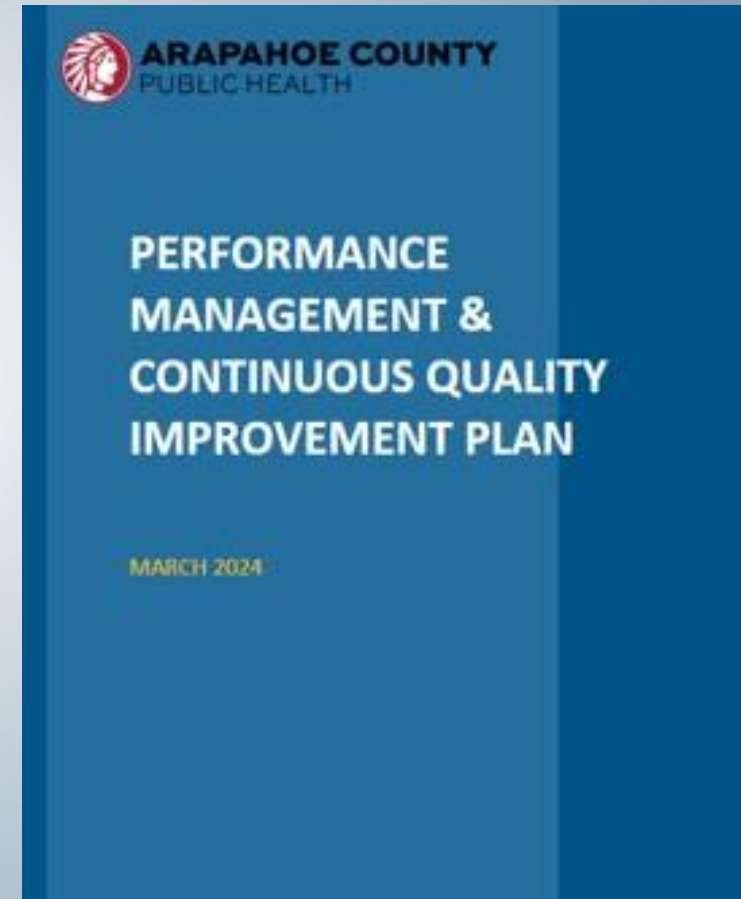
# Strength in Diverse Efforts & Communities



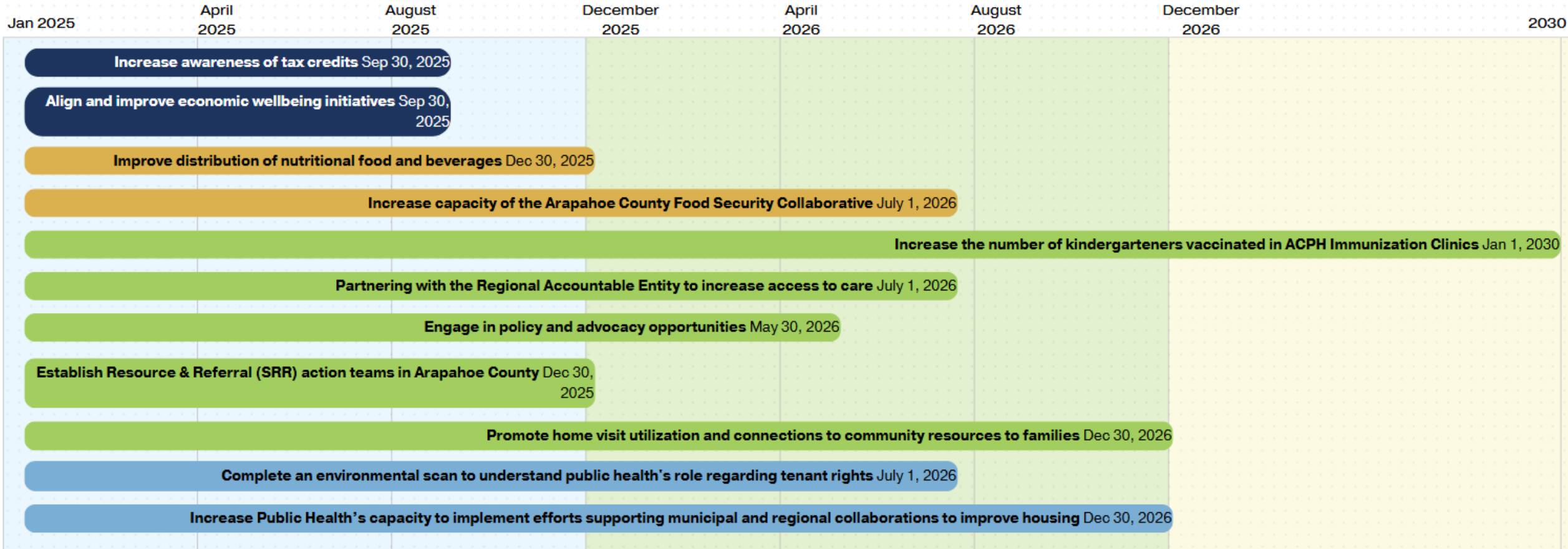
- We would like to acknowledge that ALL public health work is important at ACPH and highly interconnected with CHIP priorities. Work not explicitly included in the CHIP is vital and will be tracked through our performance management system and strategic plan.
- Our CHIP is Arapahoe County-wide, but strategies employed may be at the neighborhood or community level. We hope to convene workgroups including individuals passionate about improving goal areas within their community. Strategies may vary based on geographic and population differences.

# Measuring & Communicating Performance

- Detailed action plans by Goal Area
- Quarterly performance tracking fully incorporated into ACPH Performance Management System
- Investigating performance dashboard options to launch in 2025
- Partnership with Arapahoe County Communications Team to support social media and storytelling
- Longer term indicators tracked according to data availability

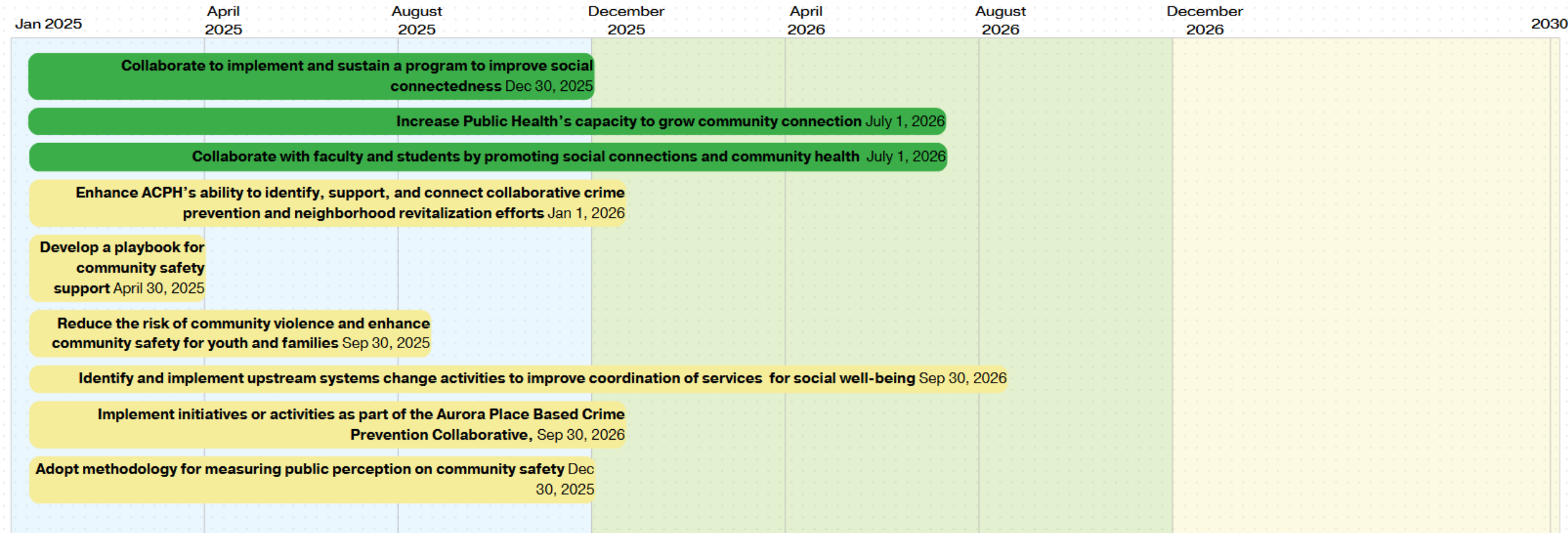


# Timeline of Objectives





# Timeline of Objectives





ARAPAHOE COUNTY

# Building Assets to Support Impact

# Establishing CHIP Infrastructure & Supports

## Existing

- Arapahoe County Board of Health
- CHAPS Internal Planning Team
- CHIP Goal Area: Food Security Collaborative (Tri Cites Area)
- CHIP Goal Area: Place-based Crime Prevention Collaborative (Aurora)
- CHIP Goal Area: Arapahoe County Homeless Coordinating Committee
- ACPH RAFT (Performance Management) Team
- ACPH Affinity Groups: Health Equity Action Team, Community Engagement Peer Learning Group, Healthy Aging Advisory Team

## New

- CHIP Community Advisory Board
- CHIP Health Care Partners Collaborative
- CHIP Cross-cutting Learning Network
- CHIP Goal Area workgroups created/ID'd for Access to Care, Economic Security, Social Connectedness

# Process and Practice Improvements



Youth Advisory Board

Seeking, tracking partner touchpoints/ events by CHIP area



Age-friendly learning opportunities

Enhancing data coordination and sharing



Increasing data equity

# Grant Seeking and Leveraging

Submitted July-Nov, by goal area

## Awarded Applications

- Access to Healthy and Affordable Food (type: federal passthrough)
- Access to Physical and Behavioral Care (type: regional)

## Award Announcement Pending

- Access to Healthy and Affordable Food (type: federal passthrough)
- Access to Access to Physical and Behavioral Care + Access to Healthy and Affordable Food + Social Connectedness (type: state)

## Applications Not Selected for Award

- Social connectedness (type: foundation)
- Overall process, partner engagement (type: federal passthrough)



ARAPAHOE COUNTY

# Next Steps

- Submit CHIP to CDPHE
- Translate key information to increase language accessibility
- Launch, implement, and promote CHIP broadly
- Recruit and formalize work group membership
- Begin performance tracking
- Ongoing BOH touchpoints: Updates, showcases, and performance reports



# Thank you



For ongoing partnership, referrals, and support

For your guidance to celebrate and center:

- Co-development with community
- Strengths-based lens, building on assets
- Shared leadership, decision-making and efforts, particularly with voices of lived experience and traditionally excluded communities



ARAPAHOE COUNTY

# Kudos to ACPH Planners, Developers, and Contributors

Abby Schmidt

Alexa Escobar Paez

Brooke Wagenseller

Dylan Garrison

Grace Soulen

James Swank

Jennifer Ludwig

Jill Bonczynski

Laura Don

Leslie Levine

Melissa Smith

Melissa Spencer

Michele Ebendick

Rebecca Rapport

Talitha Appel

Tania Cerrato

Taylor Roberts

Wendy Nading





ARAPAHOE COUNTY

# Contacts

**Brooke Wagenseller**, Health Planner

[BWagenseller@arapahoegov.com](mailto:BWagenseller@arapahoegov.com)

**Grace Soulen**, Health Equity & Community Engagement Coordinator

[GSoulen@arapahoegov.com](mailto:GSoulen@arapahoegov.com)

**Heather Baumgartner**, Partnerships, Planning & Community Health  
Promotion Dir.

[Hbaumgartner@arapahoegov.com](mailto:Hbaumgartner@arapahoegov.com)