

# **Appendix B4**

## **Operations & Maintenance Manual Site Plan + Site Plan Checklist 1-Q24-063-O&M**

---

**Canyon Peak Power Arapahoe County 1041/USR Application Q24-063**



# OPERATIONS AND MAINTENANCE SITE PLAN CHECKLIST

June 2019

An Operation and Maintenance (O&M) Site Plan shall be prepared for all projects that include post-construction water quality and/or detention facilities. The purpose of an O&M Site Plan is to document pertinent information for the Owner/Operator to assist in long-term maintenance of control measures (CMs), including identification of all functional elements, how to access the CM, and any unique maintenance considerations of the stormwater facility. Please submit a completed checklist along with, but separate from, the O&M Site Plan and Maintenance Agreement. O&M Site Plans shall, at a minimum, include the following information:

## GENERAL PLAN REQUIREMENTS

- ☒ Vicinity Map with north arrow (no copyrighted materials)
- ☒ Legend for identifying features/linetypes on drawing
- ☐ Labels for all streets/roadways, including linework for edge of street, street name, and right-of-way width; and jurisdictional boundaries *← Will add*
- ☐ Linework for right-of-way lines, lot lines, easements, tracts, and major drainageways
- ☒ Labels for all control measures (CMs)
- ☒ Include summary table when multiple CMs are present, table to include CM name, treatment area, and type of treatment provided (WQCV, 20/10, Pollutant Removal, etc.).
- ☒ Labels for all stormwater infrastructure consistent with construction drawings
- ☒ Site grading to a level of detail sufficient to show drainage patterns
- ☐ ~~For sites utilizing a regional facility, provide a note stating the location and name of the regional facility~~
- ☒ Include Case Number(s) on the lower left-hand corner of the sheet

## ACCESS REQUIREMENTS

- ☒ Show the means for the County, or its designated representative, to legally access the CM from the right-of-way. This can be accomplished with notes and arrows depicting the access path to the CMs.
- ☒ If the CM is proposed to be located in an enclosed or fenced area, include notes that specify how the CM can be accessed, including any contact information necessary for access (name, title, phone number, etc.)
- ☒ If the site has secure areas (such as within an airport, gated community, or school), note coordination requirements to access the property, including any contact information necessary for access (name, title, phone number, etc.)

## CONTROL MEASURE DETAILS

- ☒ Include notes if specific vegetation is required for the CM to function appropriately

## ADDITIONAL INFORMATION

- ☒ Include a note to "Refer to Standard Operating Procedures (SOPs) for each Control Measure, available on County's website at [www.arapahoegov.com](http://www.arapahoegov.com) for the maintenance required for each water quality facility."
- ☒ ~~Include a note if there are special considerations for the maintenance of the CM~~
- ☐ ~~If the CM is utilized by more than one property, include a note that references the properties and specifies maintenance responsibilities for each property (in accordance with the Maintenance Agreement)~~



# OPERATIONS AND MAINTENANCE SITE PLAN CHECKLIST

June 2019

## **EXTENDED DETENTION BASIN (EDB) or MODIFIED EXTENDED DETENTION BASIN (MEDB)**

Include the following additional information, at a minimum:

### PLAN VIEW REQUIREMENTS

- ☐ Location and labels for all functional elements of EDB: inflow structure(s), forebay, micropool, trickle channel, access road, outlet works, spillway, maintenance access ramps, embankment Drainage Plan
- ☐ Contours Drainage Plan
- ☐ Utilities in vicinity of EDB Drainage Plan

### PROFILE VIEW REQUIREMENTS

- ☐ Location and labels for all major features of EDB: inflow structure(s), forebay, micropool, trickle channel, maintenance access road and ramps, outlet works, spillway, embankment Drainage Details
- ☐ Invert elevations at major features of EDB (inflow structure(s), forebay, micropool, outlet work(s)) Drainage Details
- ☐ Water surface elevation of all applicable storm events (100-yr, EURV, WQCV and the micropool elevations) Drainage Details
- ☐ Label for upper and bottom stages for EDB Drainage Details

### DETAIL REQUIREMENTS

- ☐ Seed mix GESC Plans
- ☐ Water quality and orifice plate details Drainage Details
- ☐ Maintenance access road detail
- ☐ Trickle channel typical section Drainage Details
- ☐ Forebay cross sections
- ☐ Forebay release structure detail
- ☐ Spillway detail(s), including cutoff wall

will be added to  
future sheets

CANYON PEAK POWER STATION

CANYON PEAK POWER, LLC

5050 N COUNTY RD 129, BENNETT, CO 80102

ARAPAHOE COUNTY, COLORADO

PREPARED FOR:  
ARAPAHOE COUNTY PUBLIC WORKS DEPARTMENT  
6924 S LIMA STREET  
CENTENNIAL, CO 80012  
PHONE (720) 874-6500

GRADING, EROSION, AND SEDIMENT CONTROL PACKAGE

I HEREBY CERTIFY THAT THE GRADING, EROSION AND SEDIMENT CONTROL MEASURES FOR THE CANYON PEAK POWER SITE SHALL BE CONSTRUCTED ACCORDING TO THE DESIGN PRESENTED IN THIS DOCUMENT. I UNDERSTAND THAT ADDITIONAL EROSION CONTROL, SEDIMENT CONTROL AND WATER QUALITY ENHANCING MEASURES MAY BE REQUIRED OF THE OWNER AND HIS OR HER AGENTS DUE TO UNFORESEEN POLLUTANT DISCHARGES OR IF THE SUBMITTED PLAN DOES NOT FUNCTION AS INTENDED. THE REQUIREMENTS OF THE PLAN SHALL BE THE OBLIGATION OF THE LAND OWNER AND/OR HIS SUCCESSORS OR HEIRS; UNTIL SUCH TIME AS THE PLAN IS PROPERLY COMPLETED, MODIFIED OR VOIDED.

OWNER OR AUTHORIZED AGENT

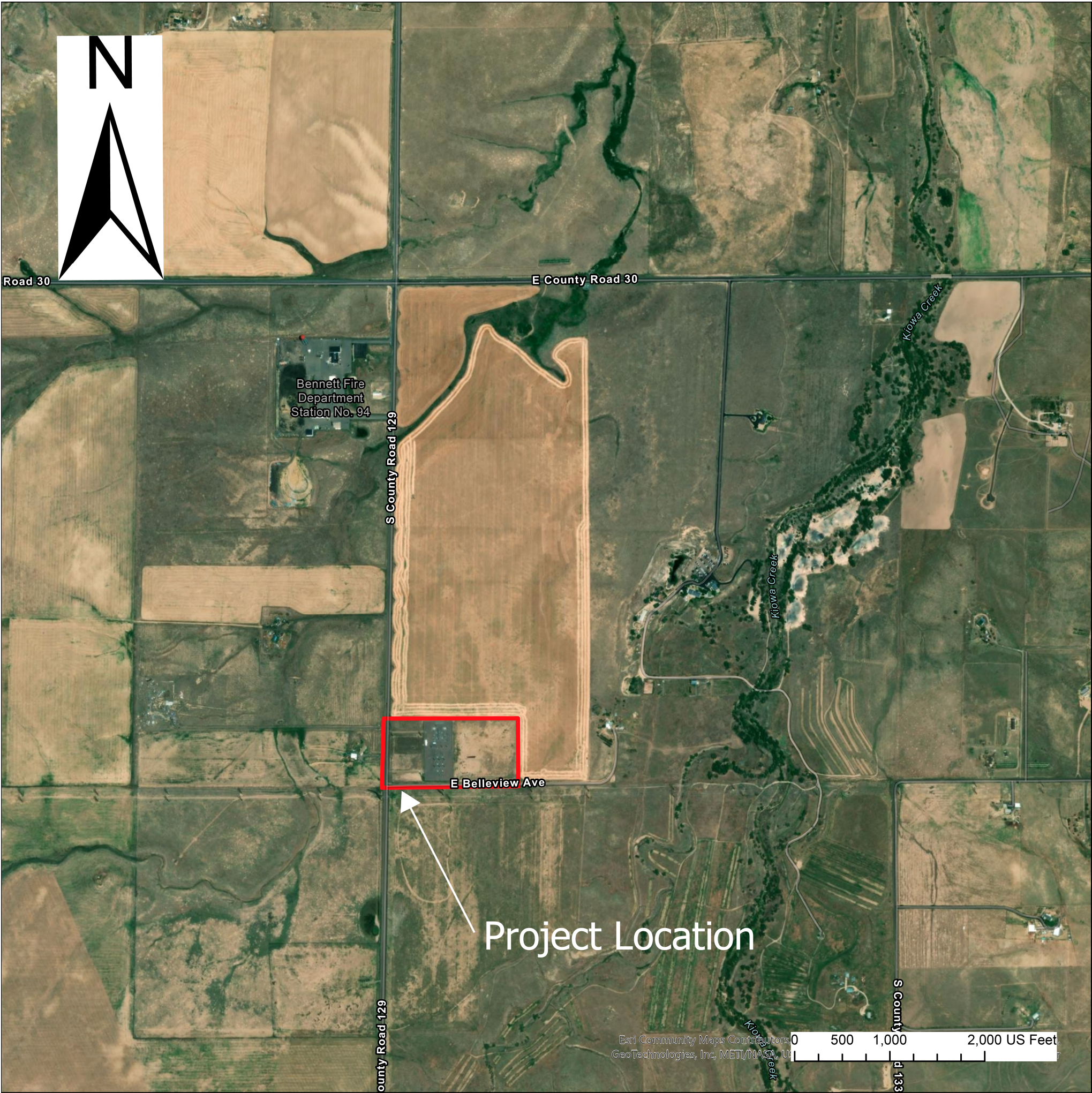
AUTHORIED SIGNATURE DATE

THIS *GRADING, EROSION AND SEDIMENT CONTROL (GESC)* DOCUMENT HAS BEEN PLACED IN THE PROJECT FILE FOR THIS PROJECT AND APPEARS TO FULFILL THE LATEST VERSION OF THE *GRADING, EROSION AND SEDIMENT CONTROL MANUAL*. ADDITIONAL GRADING, EROSION AND SEDIMENT CONTROL MEASURES MAY BE REQUIRED OF THE OWENER OR HIS/HER AGENTS, DUE TO UNFORESEEN EROSION PROBLEMS OR IF THE SUBMITTED PLAN DOES NOT FUNCTION AS INTENDED. THE REQUIREMENTS OF THIS GESC DOCUMENT SHALL RUN WITH THE LAND AND BE THE OBLIGATION OF THE LAND OWNER, OR HIS/HER DESIGNATED REPRESENTATIVE(S) UNTIL SUCH TIME AS THE PLAN IS PROPERLY COMPLETED, MODIFIED OR VOIDED.

I HEREBY ATTEST THAT THIS GRADING, EROSION, AND SEDIMENT CONTROL (GESC) DOCUMENT FOR THE CANYON PEAK POWER SITE HAS BEEN PREPARED BY ME OR UNDER MY DIRECT SUPERVISION, AND TO THE BEST OF MY KNOWLEDGE AND ABILITY HAS BEEN PREPARED IN ACCORDANCE WITH THE LATEST VERSION OF THE GESC MANUAL. THE SIGNATURE AND STAMP AFFIXED HEREON CERTIFIES THAT THIS GESC DOCUMENT WAS PREPARED IN ACCORDANCE WITH THE REQUIRED REGULATIONS AND CRITERIA; HOWEVER, THE STAMP AND SIGNATURE DOES NOT CERTIFY OR GUARANTEE FUTURE PERFORMANCE OF THE EXECUTION OF THE PLAN BY THE CONTRACTOR. THE CONTRACTOR IS RESPONSIBLE FOR EXECUTING THE CONSTRUCTION WORK ACCORDING TO THE INFORMATION SET FORTH IN THE PLAN AND IN ACCORDANCE WITH ALL APPLICABLE REQUIREMENTS.

REGISTERED PROFESSIONAL ENGINEER

STATE OF CO NUMBER



PROJECT LOCATION MAP

SHEET INDEX

CG040	GRADING EROSION AND SEDIMENT CONTROL COVER SHEET
CG140	GRADING EROSION AND SEDIMENT CONTROL PLAN INITIAL
CG141	GRADING EROSION AND SEDIMENT CONTROL PLAN INTERIM
CG142	GRADING EROSION AND SEDIMENT CONTROL PLAN FINAL
CG541	GRADING EROSION AND SEDIMENT CONTROL DETAILS (1 of 4)
CG542	GRADING EROSION AND SEDIMENT CONTROL DETAILS (2 of 4)
CG543	GRADING EROSION AND SEDIMENT CONTROL DETAILS (3 of 4)
CG544	GRADING EROSION AND SEDIMENT CONTROL DETAILS (4 of 4)

ENGINEERING SERVICES DIVISION  
THESE PLANS HAVE BEEN REVIEWED BY ARAPAHOE COUNTY FOR GRADING, EROSION, AND SEDIMENT CONTROL IMPROVEMENTS ONLY.



**Stanley Consultants INC.**

8000 South Chester Street, Suite 400, Centennial, Colorado 80112-3516  
www.stanleyconsultants.com Phone (303) 709-6806

CANYON PEAK POWER, LLC  
CANYON PEAK POWER STATION  
ARAPAHOE COUNTY, COLORADO

GRADING EROSION AND  
SEDIMENT CONTROL  
COVER SHEET

DESIGNED	H. STRUBHART
DRAWN	H. STRUBHART
CHECKED	W. ESHENAUER
APPROVED	
DATE	12/20/2024

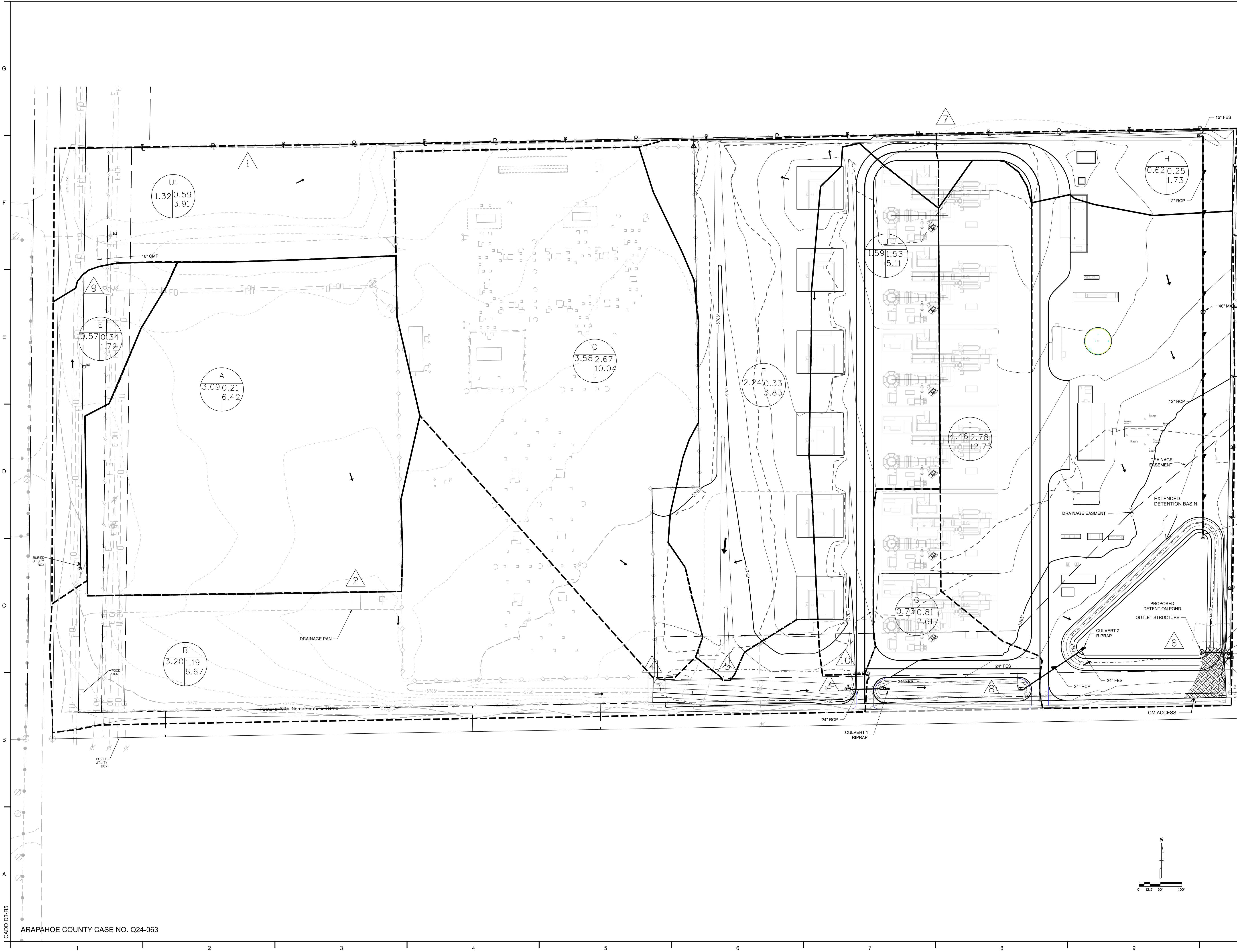
SCALE: AS NOTED

NO. 31324.07

CG040

REV.

A

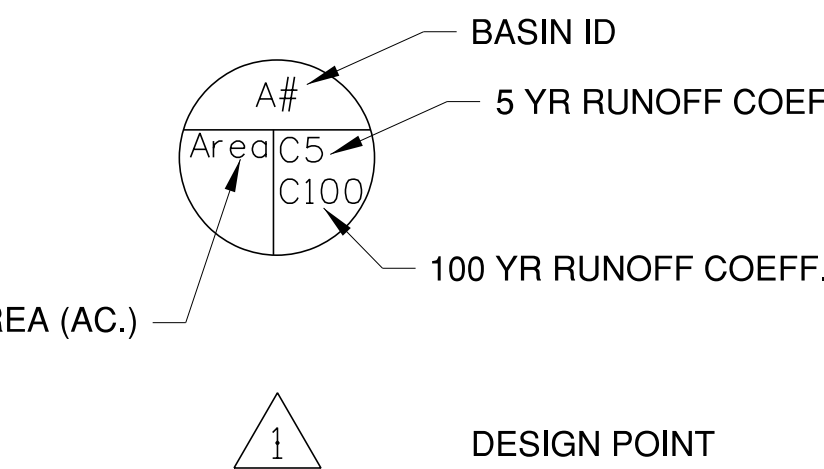


LEGEND

	PR MAJOR CONTOUR
	PR MINOR CONTOUR
	EX MAJOR CONTOUR
	EX MINOR CONTOUR
	PROPERTY LINE
	PR ROADWAY
	EX ROADWAY
	EX FENCE
	DRAINAGE BASIN

SUMMARY RUNOFF TABLE

BASIN ID	AREA (AC)	% IMPERVIOUS	RUNOFF COEFFICIENT 100-YR STORM	PEAK FLOW 100-YR STORM (CFS)	DESIGN POINT
U1	1.32	18.3	0.55	3.91	1
A	3.09	0.0	0.45	6.42	2
B	3.20	23.7	0.58	6.67	3
C	3.58	42.9	0.65	10.04	4
E	0.57	27.3	0.60	1.72	5
F	2.24	7.6	0.51	3.83	6
G	0.73	54.8	0.71	2.61	7
I	4.46	0.23	0.51	12.73	8
H	0.62	0.12	0.55	1.73	9
J	1.59	51.4	0.69	5.11	10



NOTES  
REFER TO STANDARD OPERATING PROCEDURES (SOPs) FOR EACH CONTROL MEASURE, AVAILABLE ON COUNTY'S WEBSITE AT [WWW.ARAPAHOEGOV.COM](http://WWW.ARAPAHOEGOV.COM) FOR THE MAINTENANCE REQUIRED FOR EACH WATER QUALITY FACILITY.

NO.	REVISIONS	DSGN	CHKD	APVD	DATE

**Stanley Consultants INC.**  
8000 South Chester Street, Suite 400, Centennial, Colorado 80112-3516  
[www.stanleyconsultants.com](http://www.stanleyconsultants.com)

CANYON PEAK POWER, LLC  
CANYON PEAK POWER STATION  
ARAPAHOE COUNTY, COLORADO

CIVIL PROPOSED DRAINAGE PLAN

DESIGNED <u>K. CLOHERTY</u>	SCALE: AS NOTED	REV. <b>A</b>
DRAWN <u>K. CLOHERTY</u>	NO. 31324.07	
CHECKED <u>W. ESHENAU</u>		
APPROVED <u> </u>		
DATE <u>12/20/2024</u>	<b>CG121</b>	