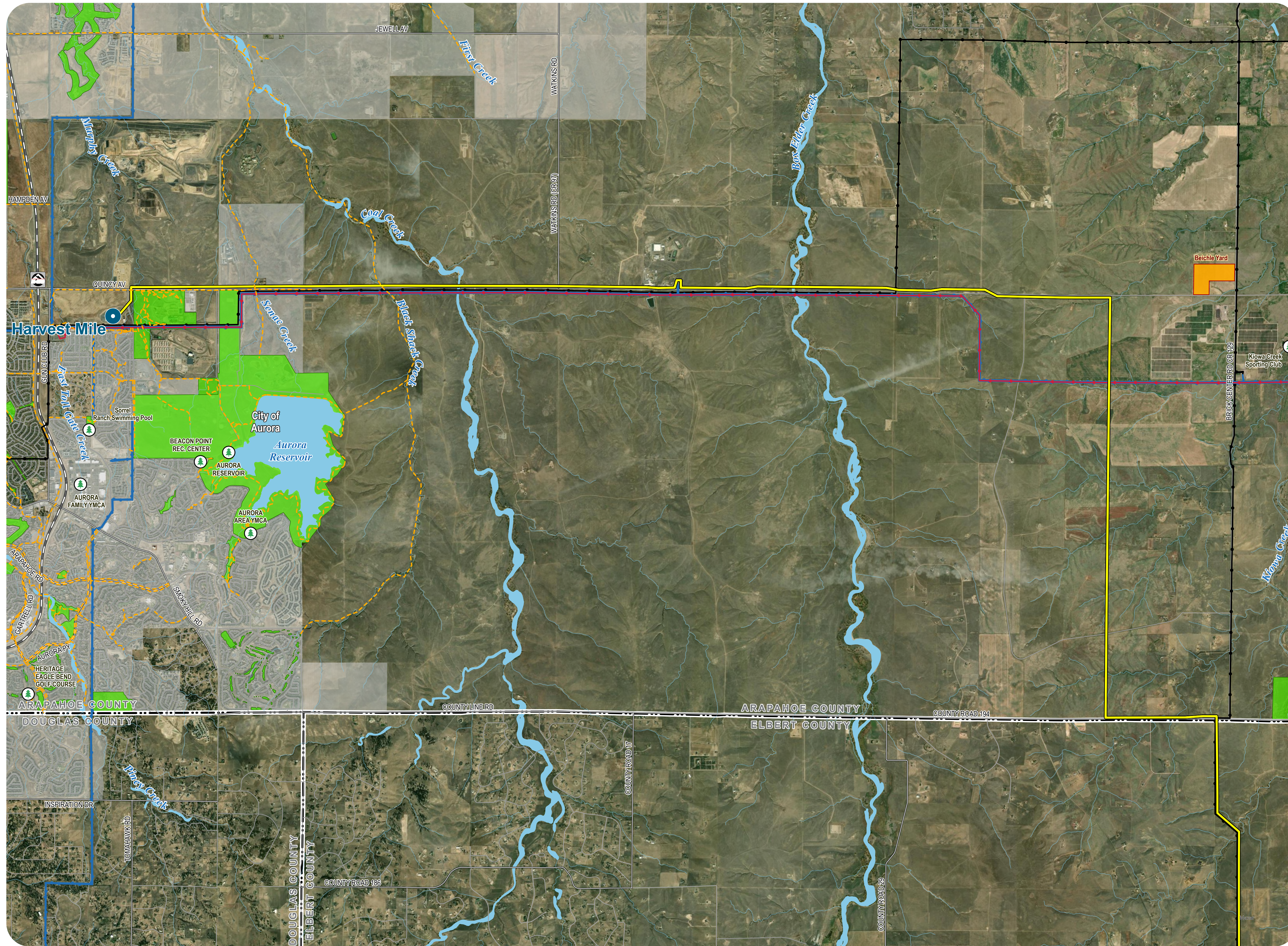


COLORADO'S POWER PATHWAY



Legend

- Existing Substation
- Proposed Transmission Route
- Laydown Yard

Existing Electric Infrastructure (HIFLD 2021)

- 115kV Transmission Line
- 230kV Transmission Line
- 345kV Transmission Line

Transportation (CDOT 2021, BTS 2020)

- Interstate
- U.S. Highway
- State Highway
- Local Road
- Railroad

Boundary (CDOT 2021, DOLA 2021)

- Municipal Boundary
- County

Hydrology (NHD, NWI 2020)

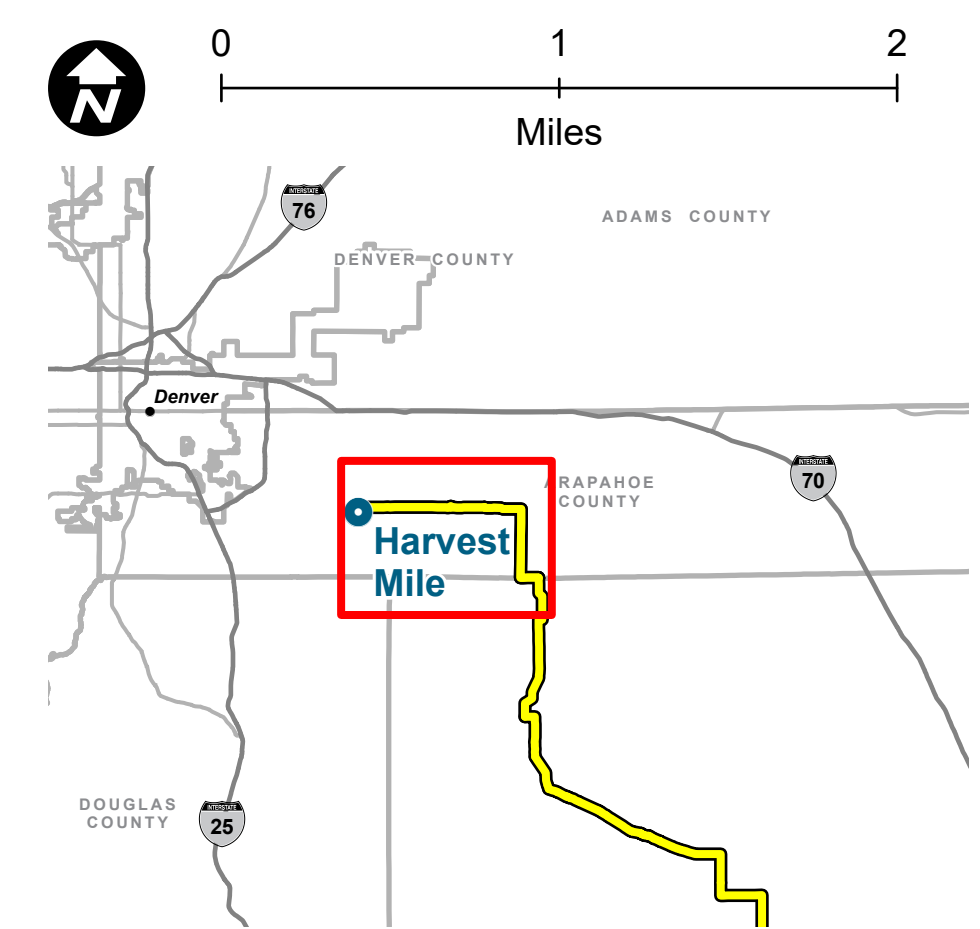
- Flowline
- Waterbody

Recreational Uses (Arapahoe Co. 2025)

- Recreation Centers
- Trails
- Parks and Public Spaces

PRELIMINARY, SUBJECT TO CHANGE

The information contained herein is believed to be accurate and suitable for limited internal uses only. Xcel Energy/Public Service Company of Colorado makes no warranty as to the accuracy or suitability of any information contained herein for use by third parties. The accuracy of this map and the information depicted should be verified prior to use. The user shall assume all risk and responsibility for any and all damages, including consequential damages, which may arise from the user's reliance on this information.



Revised: 6/23/2025 | NOT FOR CONSTRUCTION
 Path: Z:\1163_0039_CO_Pathway_Permitting\GIS\Layouts\Permitting\Arapahoe_Co\Arapahoe_Co_Permit.aprx