

# DENVER BRONCOS TRAINING CENTER ADMINISTRATIVE SITE PLAN LOT 1, DOVE VALLEY BUSINESS PARK SUBDIVISION, FILING NO. 27

LOCATED IN THE NORTHEAST QUARTER OF SECTION 36,  
TOWNSHIP 5 SOUTH, RANGE 67 WEST OF THE 6TH PRINCIPAL MERIDIAN,  
COUNTY OF ARAPAHOE, STATE OF COLORADO



Project  
**DENVER BRONCOS TRAINING CENTER**  
13655 E BRONCOS PARKWAY  
ENGLEWOOD, CO 80112  
Prepared for  
**DENVER BRONCOS FOOTBALL CLUB**



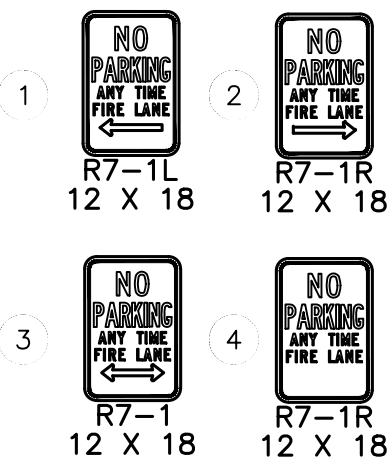
Hellmuth, Obata & Kassabaum, Inc.  
1401 17th Street, Suite 600  
Denver, CO 80202 USA  
+1 303 590 9250  
www.hok.com/studios/denver

All reproduction & intellectual property rights reserved © 2024  
In Association with  
Martin/Martin Inc.  
Civil & Structural  
12499 West Colfax Avenue  
Lakewood, CO 80215  
LandDesign, Inc.  
Landscape Architecture  
1360 Walnut Street, Suite 102  
Boulder, CO 80302  
ME Engineers, Inc.  
Mechanical, Electrical, Plumbing, Technology Fire Protection  
14143 Denver West parkway, Suite 300  
Golden, CO 80401



Jeff Seel - South Metro Fire Rescue - June 26, 2024

## FIRE SIGNAGE LEGEND



**NOTE:**  
FIRE LANE SIGN LOCATIONS IN THIS DOCUMENT ARE INTENDED AS A GUIDE. ACTUAL LOCATIONS SHALL BE SUBJECT TO OTHER REQUIREMENTS SUCH AS LANDSCAPING AND OTHER OBSTRUCTIONS. SIGNS SHALL BE PLACED ACCORDING TO THE SOUTH METRO FIRE GUIDE DOCUMENT AS PRACTICABLE. FINAL APPROVAL SHALL BE THROUGH ARAPAHOE COUNTY ENGINEERING APPROVAL PROCESS.

EXISTING	LEGEND	PROPOSED
---	PROPERTY LINE	---
---	RIGHT-OF-WAY LINE	---
---	SECTION LINE	---
---	EASEMENT	---
---	RETAINING WALL	---
---	CURB & GUTTER	---
---	CONTOURS	---
---	STORM SEWER	---
---	STORM MANHOLE	---
---	ROOF DRAIN	---
---	INLET	---
---	FLARED END SECTION	---
---	SIGN	---
---	GRADING ARROW	---
---	DRIVE	---
---	DESCRIPTIONS	---
---	SPOT ELEVATIONS	---

## SURFACE LEGEND

FULL DEPTH ASPHALT	[Pattern]
6.5" HOT-MIX ASPHALT	[Pattern]
SITE CONCRETE	[Pattern]
6" PORTLAND	[Pattern]
RE: SHEET C700	
STRUCTURAL CONCRETE	[Pattern]
7" PORTLAND	[Pattern]
RE: SHEET C700	
PLANTING	[Pattern]
RE: LANDSCAPE	
AREAS OUTSIDE OF THE DBTC LIMITS OF WORK	[Pattern]

**NOTE:**  
PAVEMENT SECTIONS BASED ON GEOTECHNICAL RECOMMENDATIONS BY KUMAR AND ASSOCIATES DATED SEPTEMBER 15, 2023. CONTRACTOR TO RECONFIRM SECTIONS WITH ARAPAHOE COUNTY AND GEOTECHNICAL ENGINEER PRIOR TO CONSTRUCTION.

**FIRE DEPARTMENT SIGNATURE:**  
ALL FIRE HYDRANTS SHALL BE INSTALLED ACCORDING TO ARAPAHOE COUNTY WATER AND WASTEWATER AUTHORITY ENGINEERING STANDARDS. THE NUMBER AND LOCATION(S) OF FIRE HYDRANT(S) AS SHOWN ON THIS WATER MAIN INSTALLATION IS CORRECT AS SPECIFIED BY THE SOUTH METRO FIRE PROTECTION DISTRICT.

FIRE PROTECTION DISTRICT: \_\_\_\_\_ DATE: \_\_\_\_\_

**FIRE FLOW REQUIREMENTS FOR PROPOSED BUILDING:**  
CONSTRUCTION TYPE: IIA  
GROSS BUILDING AREA: 283,295 sf  
BUILDING IS FULLY SPRINKLERED  
FLOW REDUCTION: 50%  
SITE FIRE FLOW: 3,000 gpm  
MINIMUM NUMBER OF FIRE HYDRANTS: 3  
AVERAGE DISTANCE BETWEEN FIRE HYDRANTS: 400ft  
MAXIMUM DISTANCE FROM ROAD TO A FIRE HYDRANT: 225ft

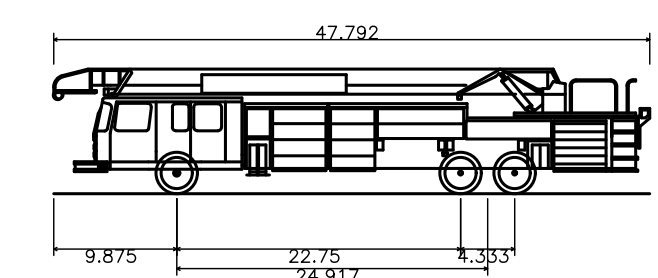
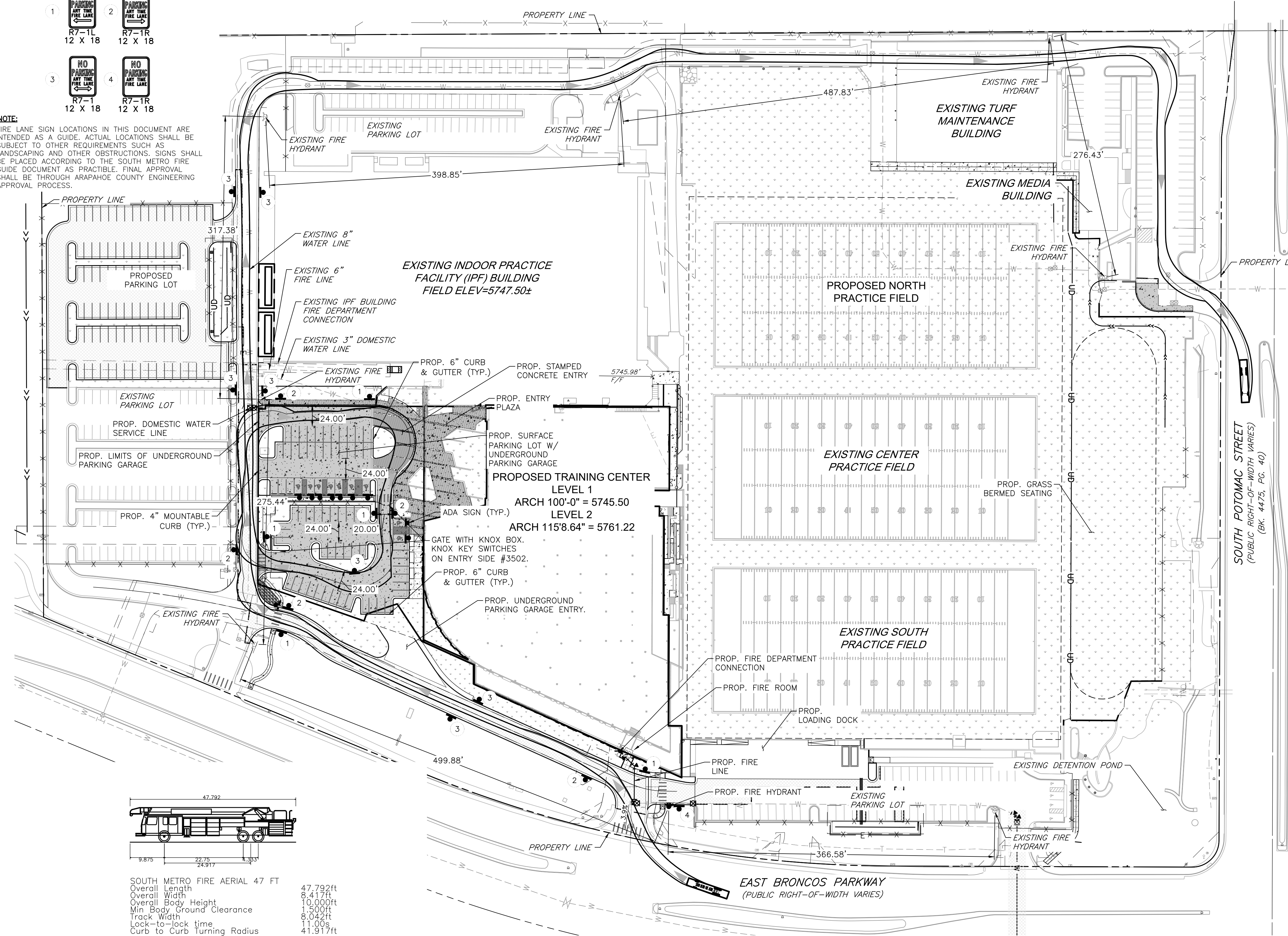


CONTRACTOR SHALL NOTIFY ENGINEER OF ANY DISCREPANCIES WITH THE PROPOSED ELEVATIONS SHOWN IN THESE PLANS. ENGINEER WILL NOT BE LIABLE FOR ANY COST ASSOCIATED WITH CHANGES TO THE DESIGN WITHOUT PROPER NOTIFICATION.



CALL 811 2-BUSINESS DAYS IN ADVANCE BEFORE YOU DIG, GRADE OR EXCAVATE FOR MARKING OF UNDERGROUND MEMBER UTILITIES

MARTIN/MARTIN ASSUMES NO RESPONSIBILITY FOR UTILITY LOCATIONS. UNLESS OTHERWISE NOTED, THE UTILITIES SHOWN ON THIS DRAWING ARE BASED ON INFORMATION PROVIDED BY OTHERS AND DEPICTED AS ASCE (38) QUALITY LEVEL D. IN ACCORDANCE WITH THE PROVISIONS OF COLORADO REVISED STATUTE, TITLE 9, IT IS THE CONTRACTORS RESPONSIBILITY TO CALL COLORADO 811 UTILITY LOCATE SERVICE FOR UTILITY LOCATES BEFORE DIGGING, AND FIELD VERIFY THE SIZE, MATERIAL, HORIZONTAL AND VERTICAL LOCATION OF ALL EXISTING UTILITIES (DEPICTED OR NOT DEPICTED) PRIOR TO THE COMMENCEMENT OF ANY CONSTRUCTION.



SOUTH METRO FIRE AERIAL 47 FT  
Overall Length 47.792ft  
Overall Width 8.417ft  
Overall Body Height 10.000ft  
Min Body Ground Clearance 1.500ft  
Track Width 8.042ft  
Lock-to-lock time 11.00s  
Curb to Curb Turning Radius 41.917ft

ARAPAHOE COUNTY CASE NO. ASP24-002

Project No: 22.70114.00  
Sheet Title:

FIRE PLAN

Original is 36 x 24. Do not scale contents of this drawing.  
Sheet Number