



ARAPAHOE COUNTY
OPEN SPACES

Mineral Station West: Multimodal Improvements

BoCC Study Session November 7, 2023

TIP (Transportation Improvement Plan) TIMELINE

Multimodal TIP Application Santa Fe PEL Study : 2022

Originally this project was packaged with 5 other multimodal projects from multiple jurisdictions along 11 mi of Santa Fe and submitted to DRCOG by AC PWD.

DRCOG TIP Approval: 2023

DRCOG only approved one (Mineral Station Bikeway Improvements) out of the 5 PEL projects for funding.

Littleton Concept Refinement (Current)

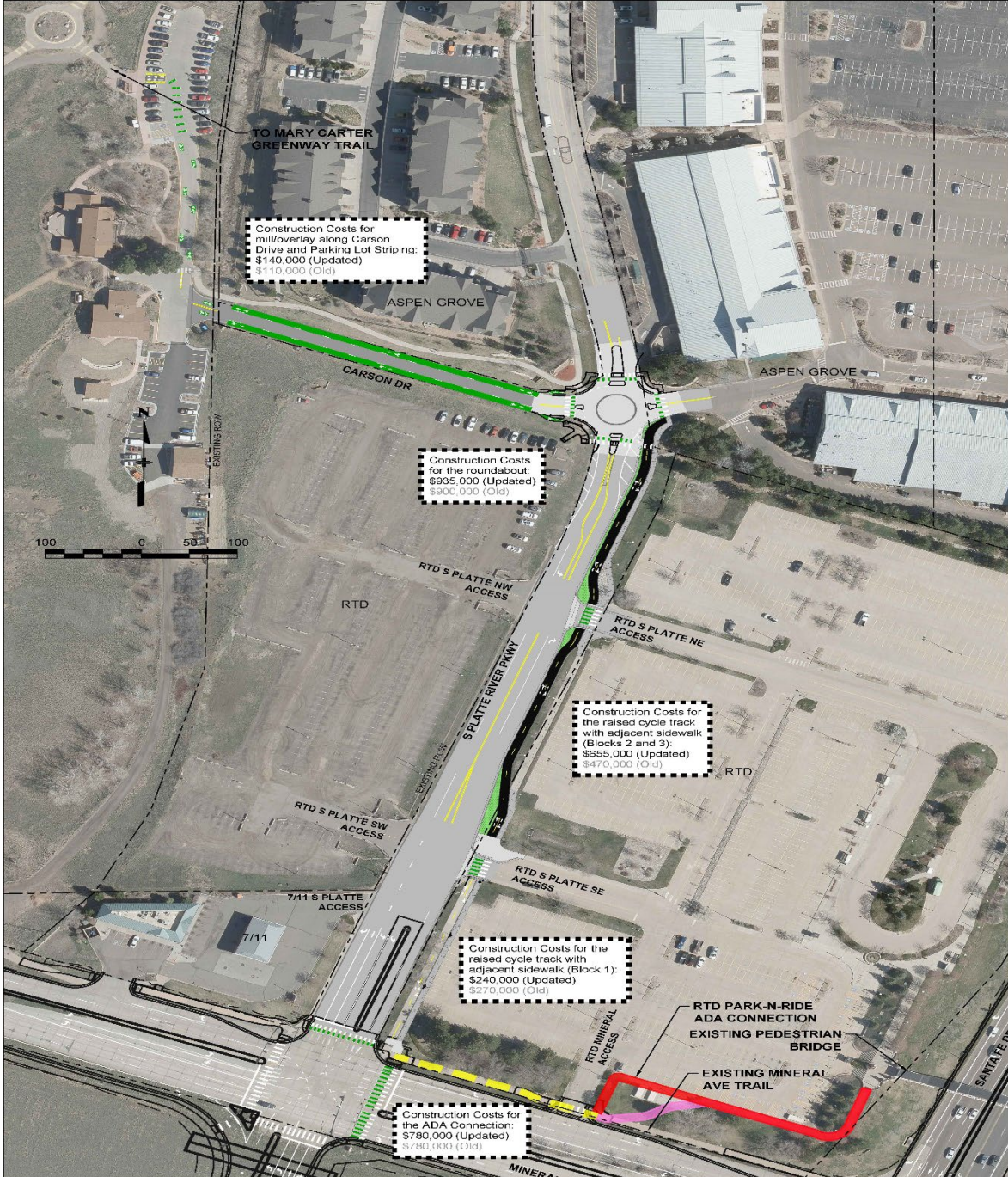
Littleton has taken the lead and advanced the design from concept to a much higher level. This allows for a more accurate reflection of costs including inflation and contingency.

Design: 2024

Ready to construct: 2025



Mineral Station West Bikeway Concept



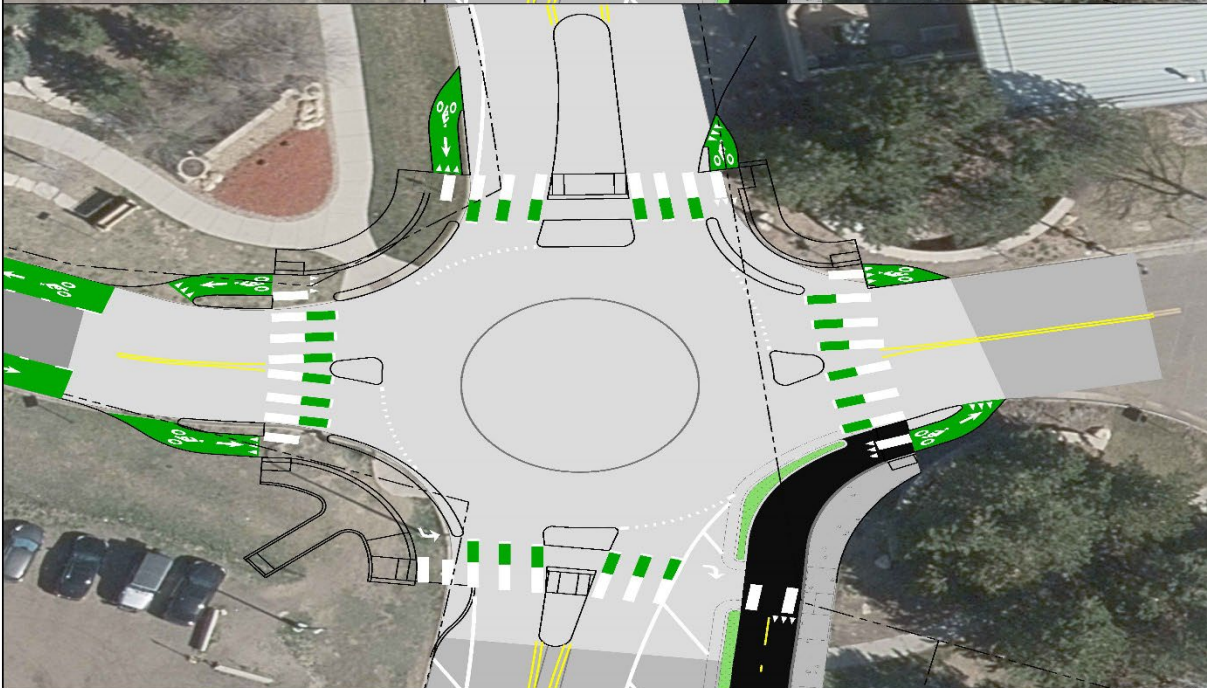
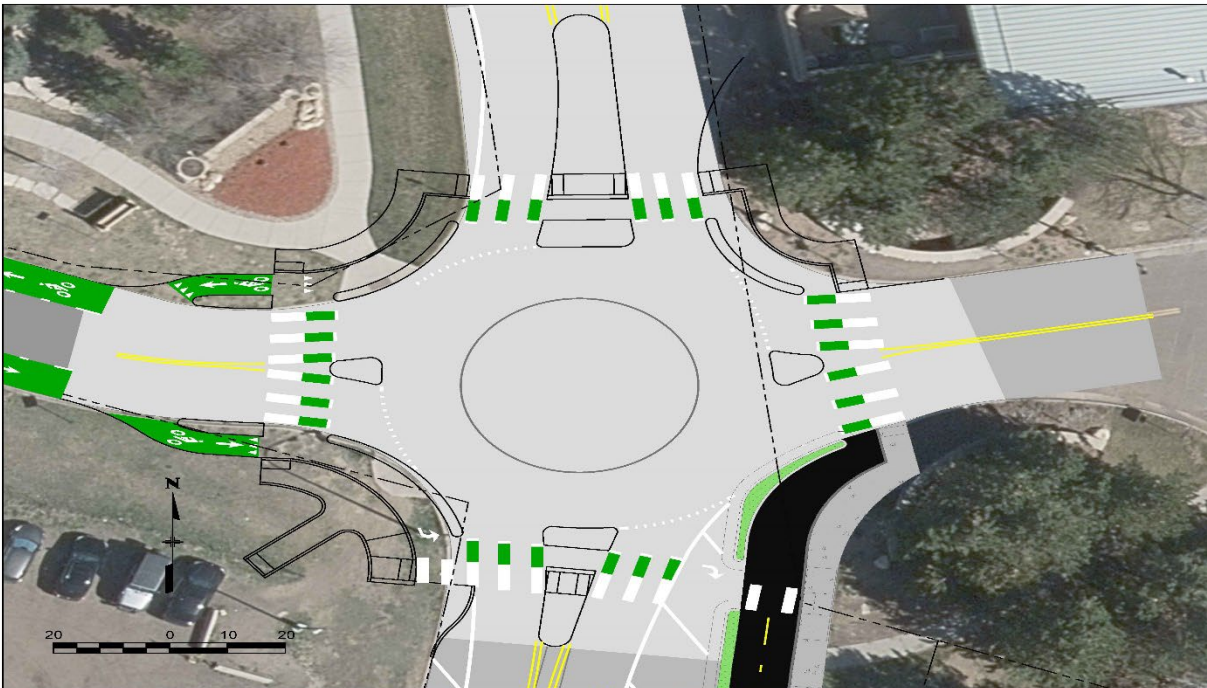
Cycle Tracks are the “Gold Standard” of bikeways catering to ALL AGES AND ABILITIES!

50%+ Riders are “Interested BUT Concerned” and Cycle Tracks significantly reduce this concern by dramatically increasing safety.

Regional Connectivity to Light Rail, Mary Carter Greenway, High Plains Trail, & C-470 Trails

Intersection Safety Improvements

Improved roundabout
intersection design increases
safety for ALL users and ALL
ages and abilities.



Mineral Station West Multimodal Program

This project is part of a larger multimodal program of projects around Mineral Station. All the projects will:

- Make first and last mile connections to transit
- Provide high-comfort bike and pedestrian facilities between commercial development (existing and planned)
- Create safer access to recreational assets.

Mineral Station Bikeway Improvements

Location Map



Cost Estimate

Mineral Station West Bikeway

Mineral Station West: Cost Estimate	
<i>Item</i>	<i>Sept '23 Cost Est.</i>
Conceptual Design	\$78,000
Preliminary & Final Design	\$475,000
Total Design Fee	\$553,000
ADA Connection Construction	\$780,000
PRP Block 1 Construction	\$240,000
PRP Block 2 & 3 Construction	\$655,000
Roundabout Construction	\$935,000
Carson Dr & Parking Lot Construction	\$140,000
Total Construction Est.	\$2,750,000
Total Est Project Cost	\$3,303,000
Grant Funding (excludes local match)	\$2,153,000
Total Local Agency Funds Needed	\$1,150,000
50% Partner Split	\$575,000

THANK YOU
