

# COLORADO'S POWER PATHWAY

To deliver new energy economy benefits to rural Colorado,  
communities across the state

# ARAPAHOE COUNTY PLANNING COMMISSION

Case Numbers: ASI25-001 and LE25-003

May 19, 2026



# WHAT WE'LL COVER TODAY

1. Who is Xcel Energy?
2. Colorado's Power Pathway
3. County-specific Project Information
4. Questions & Answers



**Nathan Steele**  
Community Relations and Local  
Government Affairs



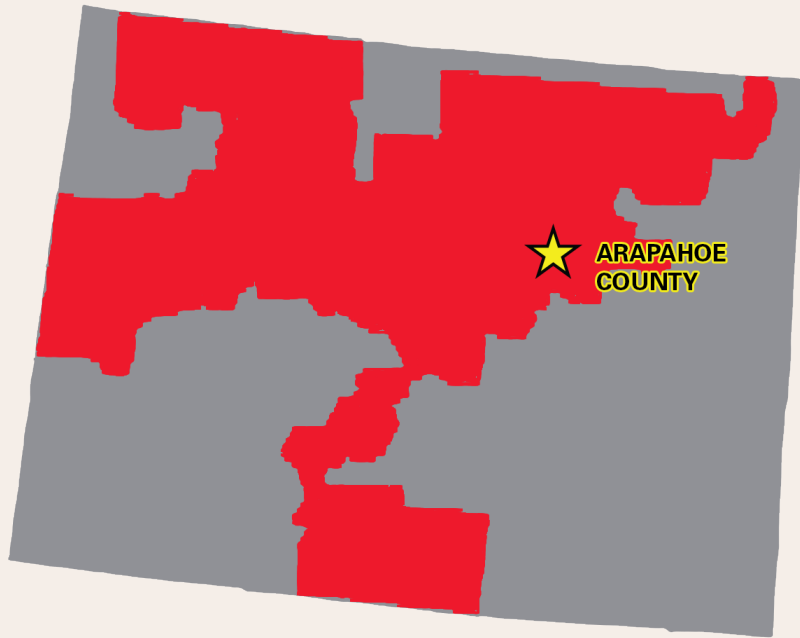
**Jennifer Chester**  
Siting and Land Rights  
Senior Manager



**Cory Miller**  
Siting and Land Rights  
Principal Agent



# XCEL ENERGY COLORADO CUSTOMERS



**1.5 million  
Electric  
Customers**



**1.4 million  
Natural Gas  
Customers**



**99.9%  
Electric  
Reliability**



# COLORADO'S POWER PATHWAY

**\$1.7 billion dollar investment**

**New double-circuit 345-kilovolt electric transmission line**

**About 550 miles divided into 5 segments**

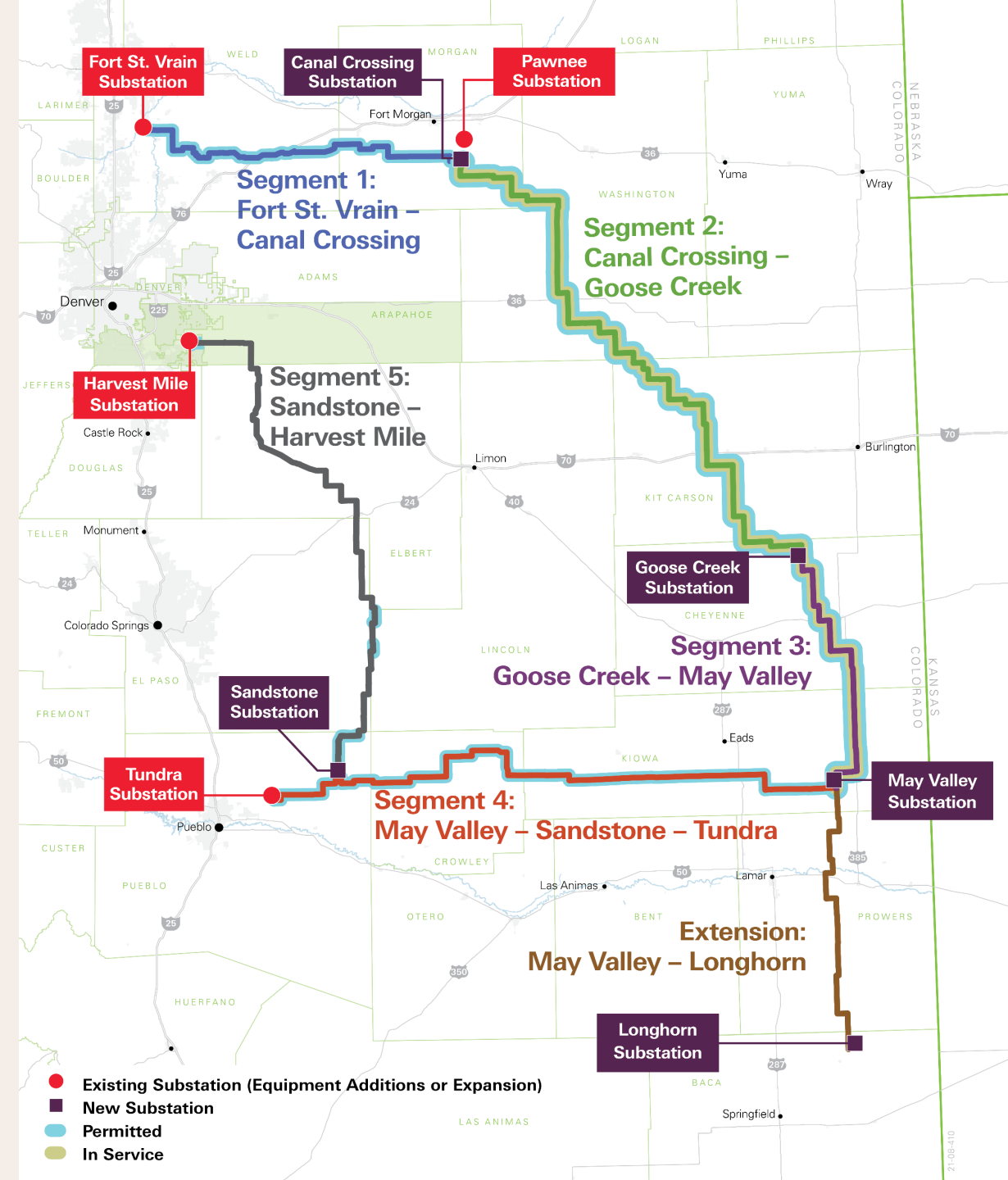
- Includes 4 new substations and expansion, equipment additions, or equipment upgrades at 4 substations

**Additional 60 miles with the May Valley - Longhorn Extension segment**

- Includes 1 new substation
- The CPUC did not approve construction of the May Valley – Longhorn Extension in the January 2024 Phase II Decision regarding Xcel Energy’s Electric Resource Plan and Clean Energy Plan. Xcel Energy may bring a proposal to construct the Extension and Longhorn Substation forward again in the future but has paused its further development as part of Pathway.

**Sequencing of construction**

- First segments in-service in 2025
- Other segments in-service in 2026 and 2027 allows resource addition to the system in stages



# CPCN FILING AND COLORADO PUC DETERMINATIONS

Pathway requires Colorado Public Utilities Commission (CPUC) approval for a Certificate of Public Convenience and Necessity (CPCN).

CPUC approved Pathway on June 2, 2022, providing Xcel Energy the authority and direction to move forward with Pathway for all five segments.

## The CPUC determined that:

- Meeting 2030 carbon emission reduction targets depends on the timely completion of the transmission line.
- The Project is appropriately sized to accommodate injection of up to 5,000 megawatts of new generation.
- The looped transmission line configuration provides additional resiliency and reliability benefits while avoiding costs.
- Cost estimates and timelines for the Project, along with magnetic field and noise level requirements, are reasonable.
- Undergrounding is not in the public interest due to cost and other factors.

Xcel Energy’s application and CPUC’s approval are on [E-Filings page](#) on the [CPUC website](#) under Proceeding No. 21A-0096E.

Filing materials are also on [Colorado’s Power Pathway Regulatory Filings](#).

BEFORE THE PUBLIC UTILITIES COMMISSION  
OF THE STATE OF COLORADO

\* \* \* \* \*

IN THE MATTER OF THE APPLICATION )  
OF PUBLIC SERVICE COMPANY OF )  
COLORADO FOR A CERTIFICATE OF )  
PUBLIC CONVENIENCE AND NECESSITY )  
FOR COLORADO’S POWER PATHWAY ) PROCEEDING NO. 21A-XXXXE  
345 KV TRANSMISSION PROJECT AND )  
ASSOCIATED FINDINGS REGARDING )  
NOISE AND MAGNETIC FIELD )  
REASONABLENESS )

VERIFIED APPLICATION OF PUBLIC SERVICE COMPANY OF COLORADO FOR A  
CERTIFICATE OF PUBLIC CONVENIENCE AND NECESSITY FOR COLORADO’S  
POWER PATHWAY 345 KV TRANSMISSION PROJECT AND ASSOCIATED  
FINDINGS REGARDING NOISE AND MAGNETIC FIELD REASONABLENESS

In accordance with § 40-5-101, C.R.S., 4 CCR 723-3-3002, 4 CCR 723-3-3102, and 4 CCR 723-3-3206, Public Service Company of Colorado (“Public Service” or the “Company”) hereby requests that the Colorado Public Utilities Commission (“Commission”) grant a Certificate of Public Convenience and Necessity (“CPCN”) to construct Colorado’s Power Pathway 345 kilovolt (“kV”) Transmission Project (the “Pathway Project” or the “Project”).

I. THE PATHWAY PROJECT

The Pathway Project is a proposed 560-mile, 345 kV double circuit network transmission system between four existing substations and three new substations.<sup>1</sup> The Project will connect the Front Range to areas of northeastern, eastern, and southeastern Colorado that are rich with renewable energy resource development potential, but do not

<sup>1</sup> The three new substations will be 345 kV switching stations. A switching station is a type of substation that operates at a single voltage level.

Colorado PUC E-Filings System

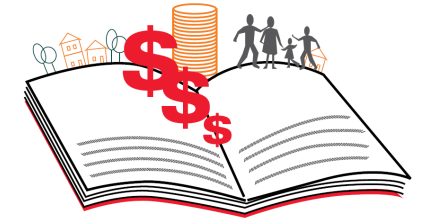
# PATHWAY WILL DELIVER ECONOMIC BENEFITS TO COMMUNITIES, LIKE ARAPAHOE COUNTY, ACROSS EASTERN AND SOUTHERN COLORADO OVER THE SHORT- AND LONG-TERM



POSITIVE IMPACT



JOBS & REVENUE



AND MORE...

## Short Term and Local:

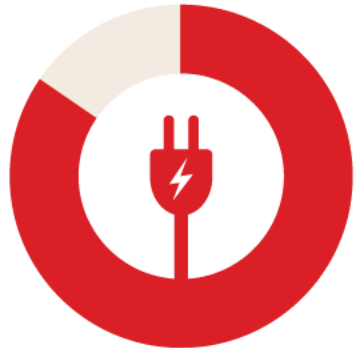
- Tax revenue
- Revenue to local businesses during construction
- Xcel Energy directly serves over 278,000 electric customers in Arapahoe County
- Pathway will connect directly to the existing 230kV Harvest Mile Substation that serves Arapahoe County

## Long Term and Regional:

- New energy generation projects will be able to interconnect to Pathway
- Ongoing job opportunities and tax revenue
- Improve the state's electric reliability, therefore benefiting all consumers in Colorado



# COLORADO'S POWER PATHWAY BY THE NUMBERS



**80%**

Electric utility greenhouse gas emissions reduction required by 2030 per Colorado House Bill 19-1261

**2016**

Last major addition or upgrade to backbone transmission in eastern Colorado

The energy capacity provided by Colorado's Power Pathway is the equivalent of powering

**2,500,000**

Colorado homes annually



**30+**

Resources evaluated to identify transmission line routes and substation sites



**2,900+**

Miles of transmission route options shared with the public to solicit feedback

**175,000+**  
Postcards mailed

**9,500+**  
Newsletters emailed

**750,000+**  
Facebook public meeting ad views

**80+**  
Meetings with agencies, cities and counties

**235,000+**  
Website page views

**87,000+**  
Unique website visitors  
ColoradosPowerPathway.com

**424**  
Miles permitted of

**532**  
Miles total

**14**  
Land use permits approved

**10**  
Jurisdictions

**24**  
Jurisdiction hearings for land use permits

**47** Public meetings\*

**42**  
Open houses / community meetings

**5**  
Virtual town halls

**2,600+**  
General questions and comments received

**1,643**  
Public comment forms received



**3,268** Public meeting attendees

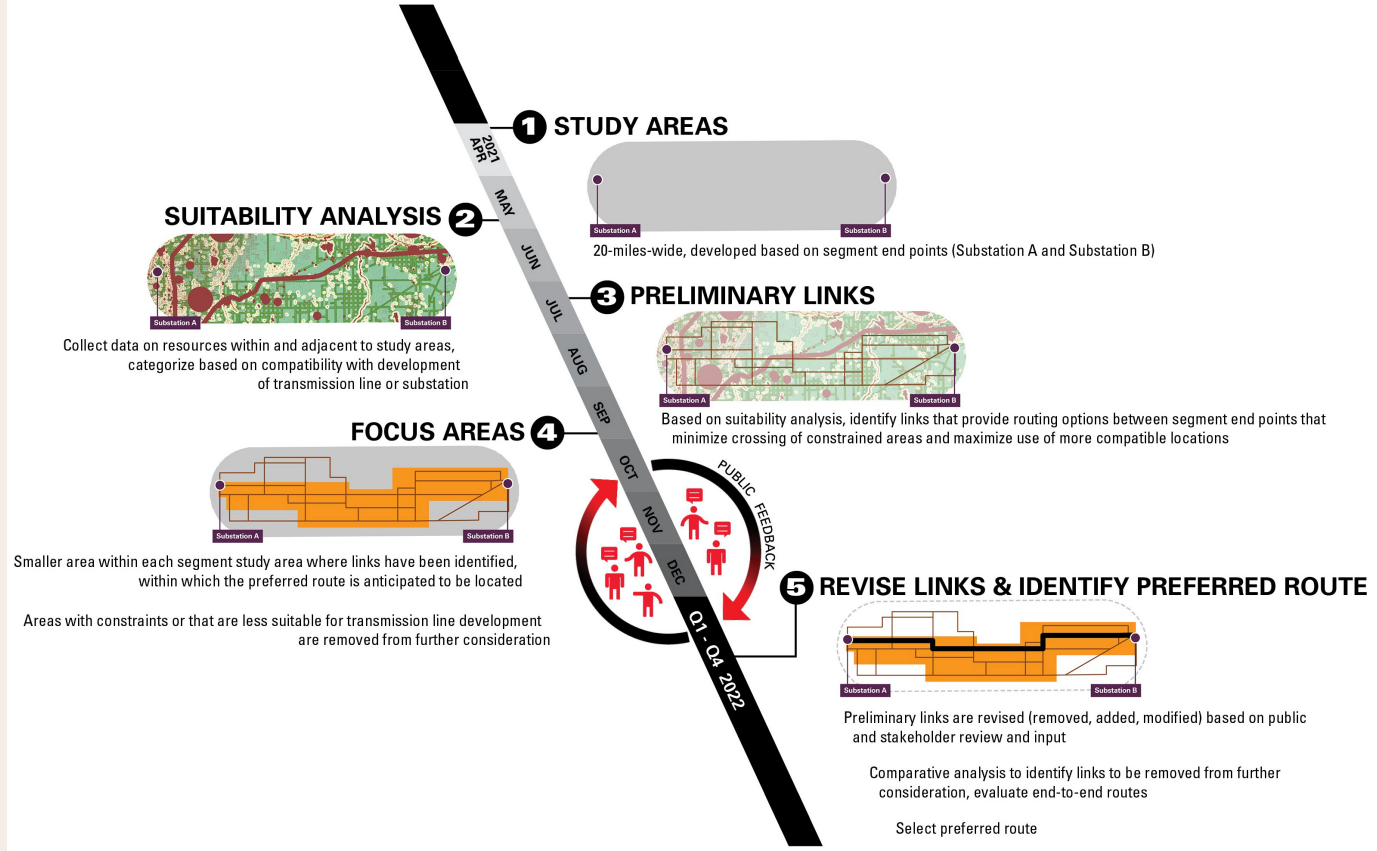
**164** Newspaper ads in  
**35** Local papers\*

**425** Radio ads on  
**12** Stations\*

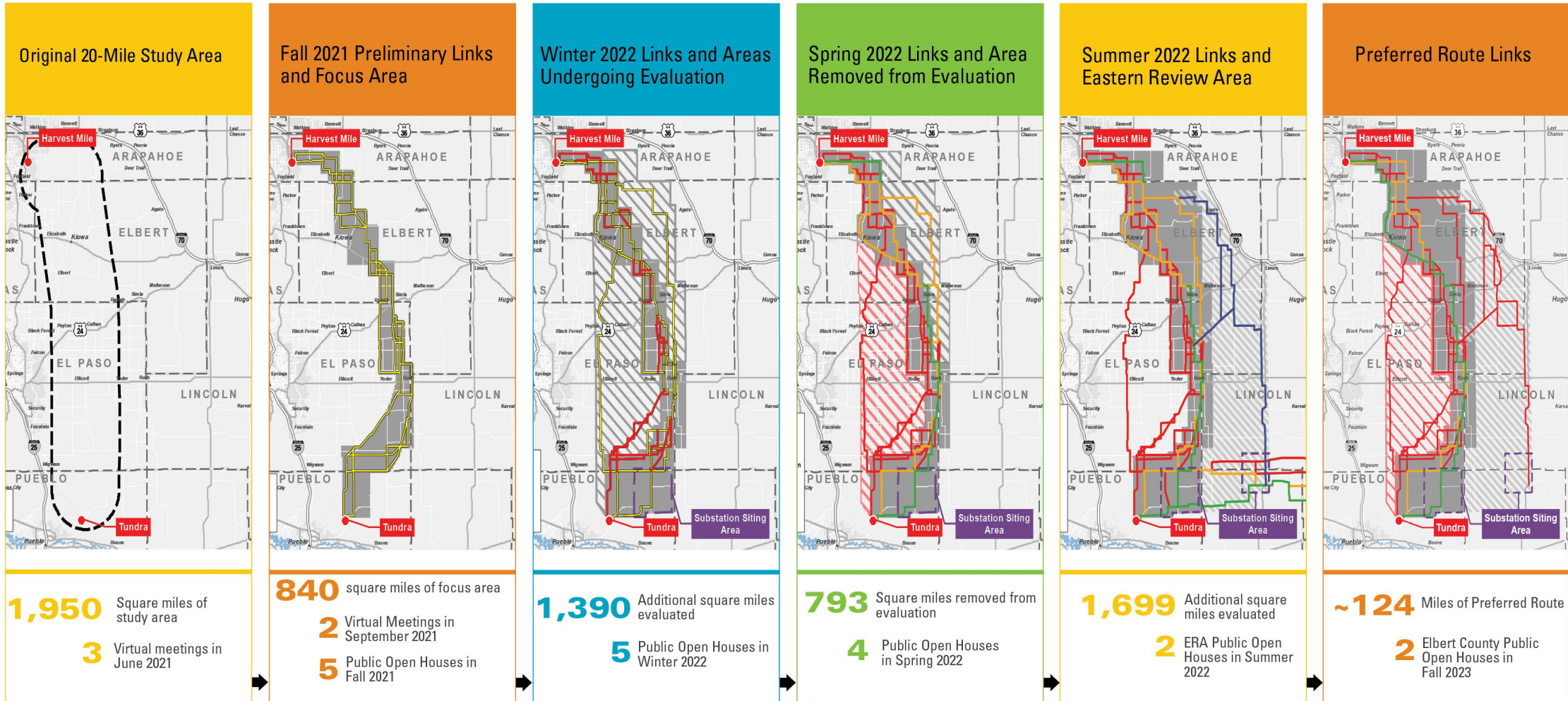
# ROUTING AND SITING CONSIDERATIONS AND PROCESS

Criteria	Acquisition of Land Rights	Substation Engineering	Transmission Engineering	Electric System Planning
<b>Consideration</b>	<ul style="list-style-type: none"> <li>Existing easements and fee-owned property</li> <li>Jurisdiction and land ownership</li> <li>Formally designated areas with restrictions that prohibit development of transmission lines</li> <li>Existing and planned developments (residential, commercial, other) that may not have enough space for easements</li> </ul>	<ul style="list-style-type: none"> <li>Vacant developable land</li> <li>Available for purchase</li> <li>60-acre site</li> <li>Accessibility for construction and operation – located adjacent to maintained public roads</li> </ul>	<ul style="list-style-type: none"> <li>Topography/slope</li> <li>Proximity to buildings (homes, businesses)</li> <li>Transportation infrastructure                             <ul style="list-style-type: none"> <li>Roads</li> <li>Railroads</li> <li>Airports</li> </ul> </li> <li>Military and other special use airspace</li> <li>Oil &amp; gas infrastructure such as wells and pipelines</li> </ul>	<ul style="list-style-type: none"> <li>Adjacency to existing transmission lines – reliability and redundancy</li> <li>Electric system interconnections (substations)</li> <li>Line length</li> </ul>

Economics	Environmental and Cultural Resources	Public Involvement	Renewable and Other Generation Resources	Regulatory Compliance
<ul style="list-style-type: none"> <li>Overall route length</li> <li>Construction, operation, and maintenance needs such as access</li> <li>Structure types required for straight sections for turns/angles</li> </ul>	<ul style="list-style-type: none"> <li>Land use/land cover</li> <li>Proximity to residences and structures</li> <li>Designated scenic areas</li> <li>Special status and protected species habitat, critical habitat</li> <li>Wetlands and waterways</li> <li>Cultural and historic sites</li> </ul>	<ul style="list-style-type: none"> <li>Landowner feedback</li> <li>Stakeholder discussions</li> <li>Comments received during public open houses and through Project website, email, and hotline</li> <li>Proximity to homes</li> <li>Noise</li> <li>EMF</li> <li>Wildlife impacts</li> <li>Agricultural operations</li> <li>Traffic</li> <li>Visual impacts</li> <li>Landowner interest</li> </ul>	<ul style="list-style-type: none"> <li>Existing and planned utility-scale wind and solar facilities</li> <li>Renewable generation zones</li> <li>Future electric system interconnections</li> </ul>	<ul style="list-style-type: none"> <li>Local land use permitting requirements such as zoning and setbacks</li> <li>Coordination with Colorado Parks &amp; Wildlife and U.S. Fish &amp; Wildlife Service</li> <li>Federal Aviation Administration and Department of Defense and/or other military airspace requirements</li> <li>Army Corps of Engineers for wetlands/waterways</li> </ul>



# SEGMENT 5 ROUTING HISTORY



**30+**  
Resources evaluated to identify links and substation sites

**23**  
Public meetings  
(18 in person open houses, 5 virtual town halls)

**1,000+**  
Open house attendees

**4,000+**  
Total square miles of study area

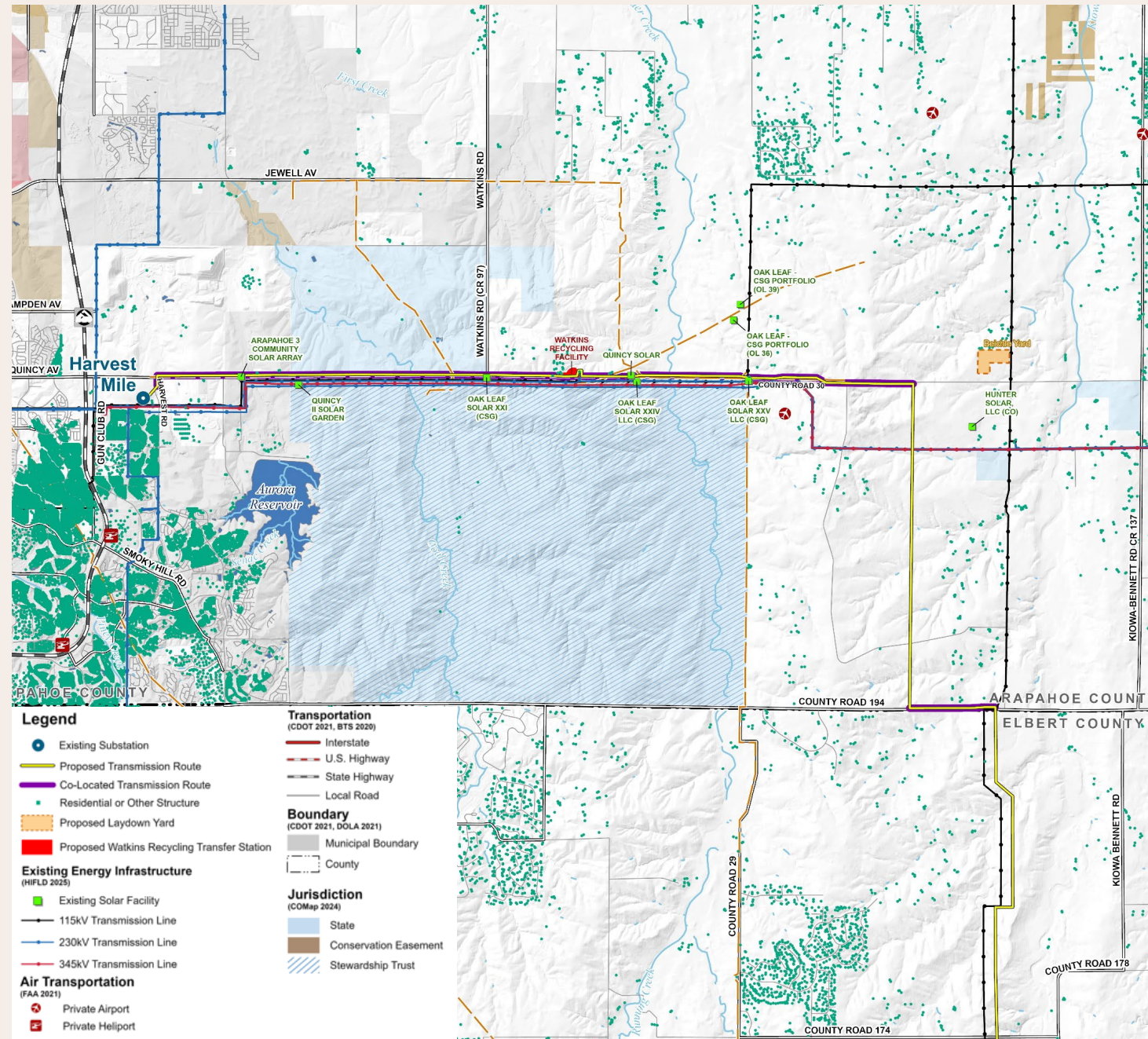


# ROUTING CONSIDERATIONS

Resources that influenced the selection of the proposed route in Arapahoe County included:

- Colorado State Land Board Stewardship Trust lands
- Training areas associated with Air National Guard at Buckley Space Force Base
- Existing electric infrastructure
- Feedback from the public and jurisdiction staff
- Existing and proposed residential development
- Existing land use patterns, including conservation easements (Natural National Landmark)
- Existing solar development
- Aurora Reservoir
- Location of proposed route south of Arapahoe County
- Access for construction and maintenance

Approximately 12 miles (66 percent) of the Pathway transmission line in Arapahoe County are co-located along existing roads and electric transmission infrastructure



# ARAPAHOE COUNTY

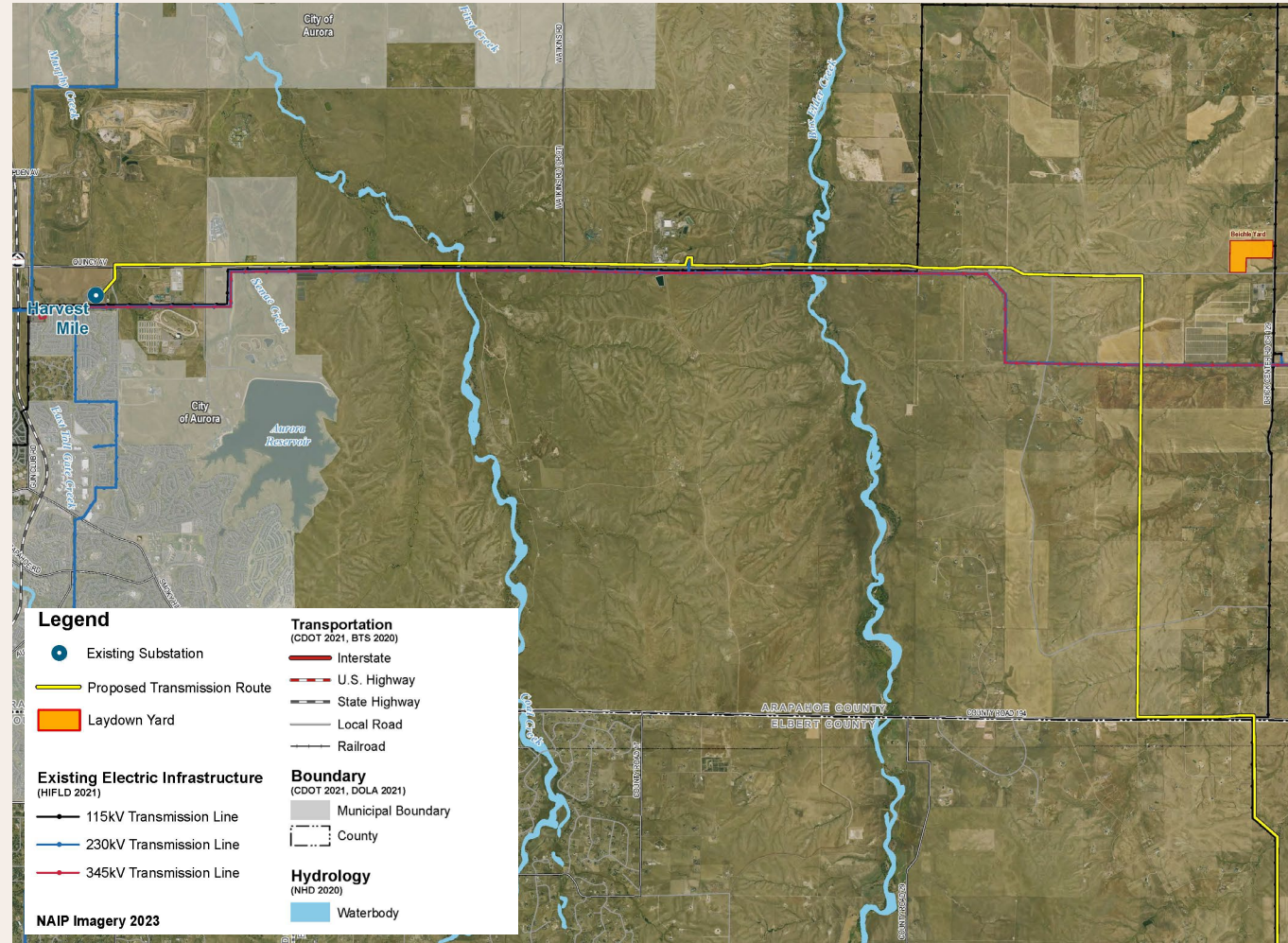
Pathway will be constructed in segments, with a portion of Segment 5 located in Arapahoe County.

Pathway facilities proposed for approval under the 1041 and L&E Permit Applications in Arapahoe County include:

- Approximately 18 miles of new 345-kV double-circuit electric transmission line; and
- Temporary construction areas for conductor stringing areas associated with construction of the Pathway facilities.

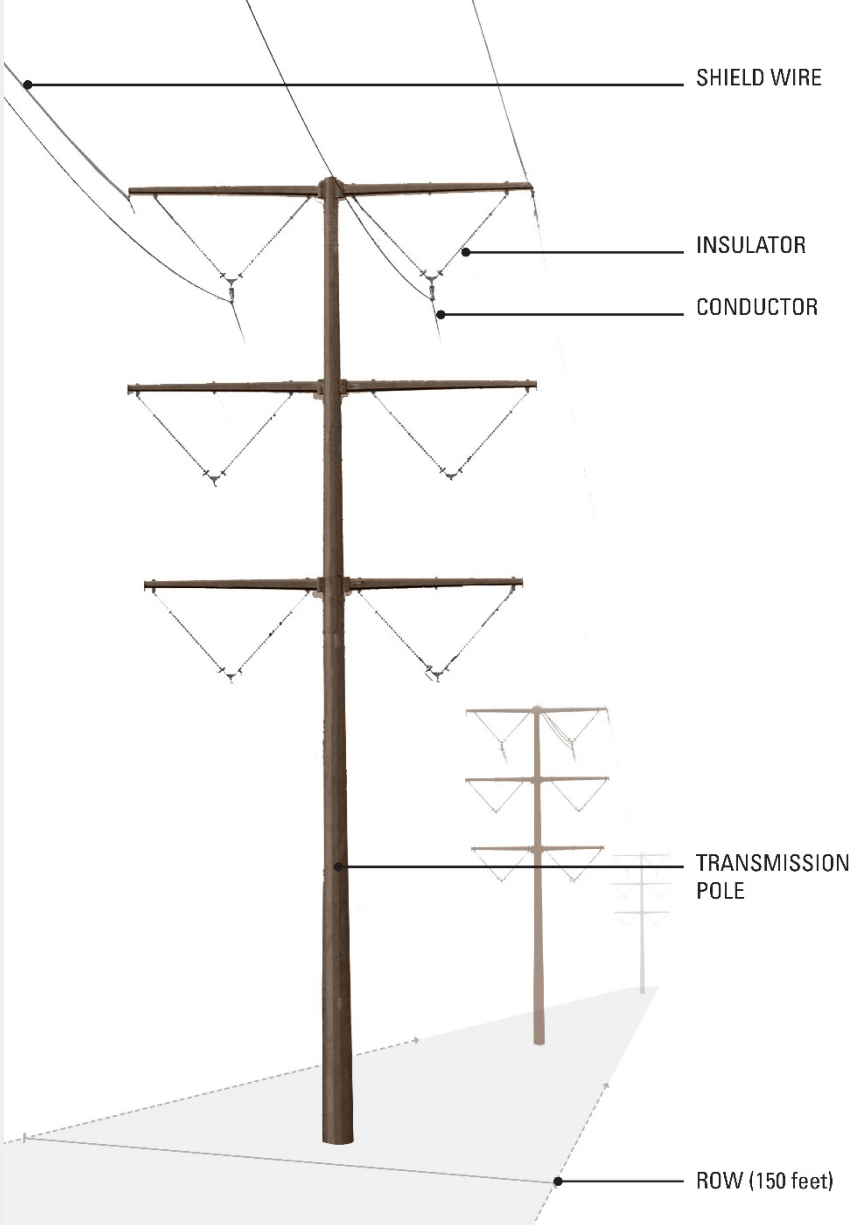
The equipment additions for the Harvest Mile Substation were permitted through the Pawnee-Daniels 345kV Transmission Line project in 2017 (case numbers ASI16-004 - 1041 Case File, L16-006 - Planning Case File, and EL16-006 - Engineering Case File).

The approximately 80-acre laydown yard was permitted via Temporary Use Permit Number ZTU-2025-00004.



# 345-KV DOUBLE CIRCUIT TRANSMISSION LINE

Characteristic	Anticipated Design
Typical height	105 - 140 feet (no pole will exceed a 199-foot maximum height)
Right-of-way	150 feet total width, 75 feet on each side of the centerline
Span length	Typically, 950 feet between transmission poles, up to 1,400 feet
Material/color	Weathering steel, brown or rust color
Clearance	Maintain all clearances as required by National Electric Safety Code



# PHOTOGRAPHIC SIMULATION: KOP 1

- KOP 1: Quincy Ave & Quincy Ave Diversion to Ridge View School
- Looking East along Quincy Avenue
- Pathway is along the left-hand side of the image (north side of Quincy Avenue)



EXISTING CONDITION



KEY LOCATION MAP



SIMULATED CONDITION

Viewpoint Number:	1
Viewpoint Location:	Quincy Ave + Quincy Ave
Date of Photograph:	4/11/2022
Time of Photograph:	1:25PM (MST)
Latitude:	39.638210° N
Longitude:	-104.659992° W
Viewing Direction:	East
Weather Condition:	Partly Cloudy
Ground Elevation + Camera Height:	5.5 feet

IMAGE DATA

# PHOTOGRAPHIC SIMULATION: KOP 2

- KOP 2: Quincy Ave & Manila Road
- Looking West along Quincy Ave
- Pathway is along the right-hand side of the image (north side of Quincy Ave)



KEY LOCATION MAP

EXISTING CONDITION



SIMULATED CONDITION

Viewpoint Number:	2
Viewpoint Location:	Quincy Ave at Manila Rd
Date of Photograph:	4/11/2022
Time of Photograph:	11:43AM (MST)
Latitude:	39.637235° N
Longitude:	-104.528956° W
Viewing Direction:	West
Weather Condition:	Partly Cloudy
Ground Elevation + Camera Height:	5.5 feet

IMAGE DATA

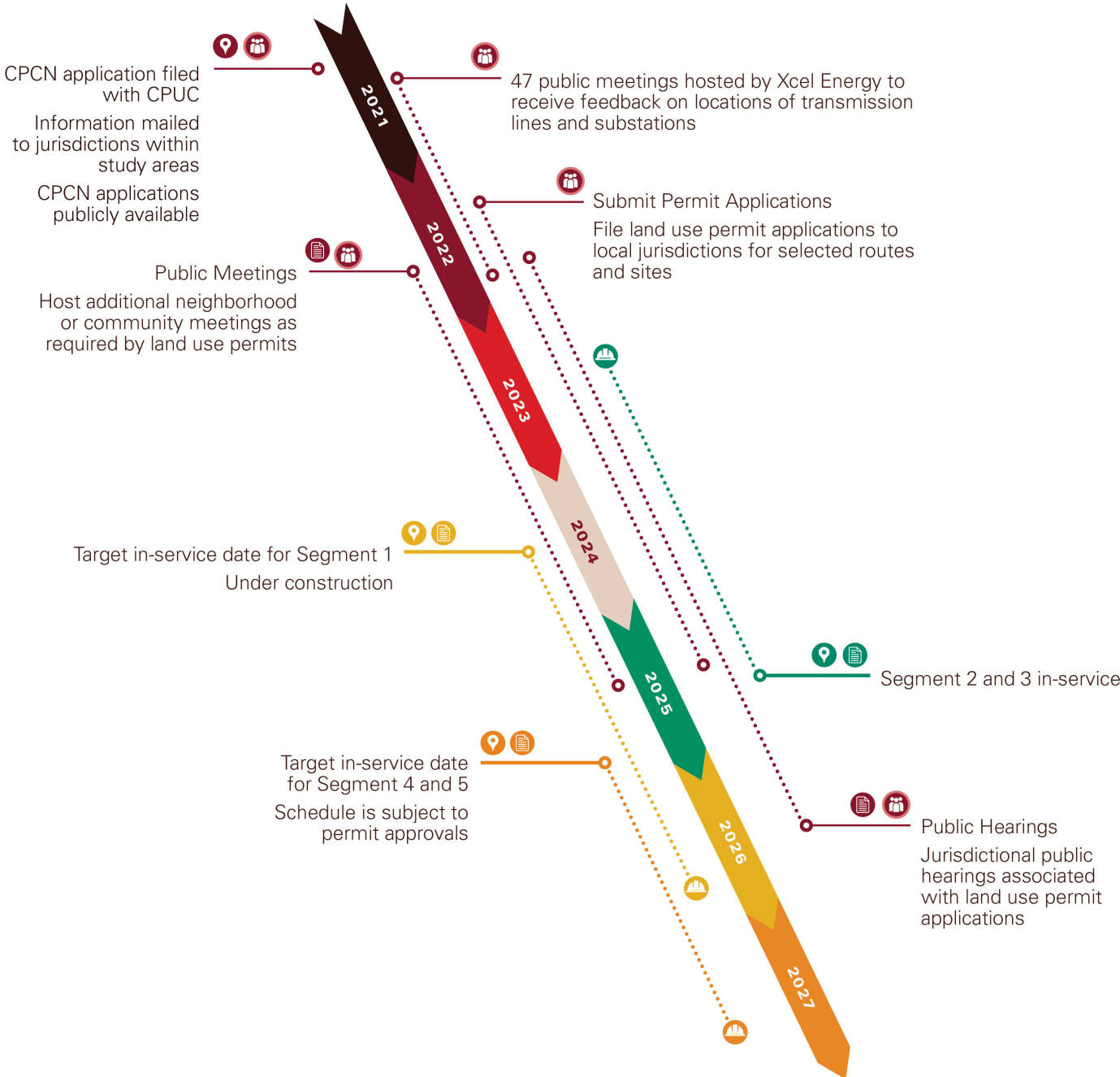
# ANTICIPATED SCHEDULE

For more information about Colorado's Power Pathway:

Visit [ColoradosPowerPathway.com](https://coloradospowerpathway.com)

Call 855-858-9037

Email [ColoradosPowerPathway@xcelenergy.com](mailto:ColoradosPowerPathway@xcelenergy.com)



# ARAPAHOE COUNTY 1041 APPROVAL CRITERIA

## **Regulations Governing Areas and Activities of State Interest in Arapahoe County Article V §A, General Approval Criteria**

The routing and site selection, construction, maintenance, and operation of Pathway will comply with applicable general approval criteria

## **Regulations Governing Areas and Activities of State Interest in Arapahoe County Article V §C, Additional Criteria Applicable to Major Facilities of a Public Utility**

The routing and site selection, construction, maintenance, and operation of Pathway will comply with applicable approval criteria applicable to Major Facilities of a Public Utility



# REGULATIONS GOVERNING AREAS AND ACTIVITIES OF STATE INTEREST IN ARAPAHOE COUNTY ARTICLE V PART A, GENERAL APPROVAL CRITERIA

## Approval Criteria

(1) Documentation that prior to site disturbance associated with the Proposed Project, the applicant can and will obtain all necessary property rights, permits and approvals. The Board may, at its discretion, defer making a final decision on the application until outstanding property rights, permits and approvals are obtained.

(2) The Proposed Project considers the relevant provisions of the regional water quality plans.

## Compliance

Local permits and approvals that may be required by Arapahoe County include, but are not limited to, 1041 Permit, Location and Extent Permit, Street Cut Right-of-Way (ROW) Use Permits, GESC Permit; Floodplain Development Permit; Oversize/Overweight Permits, and Temporary Use Permits. Any necessary construction-related authorizations, which are typically administrative in nature, will be obtained between the time local land use permits are approved and when construction begins. State approvals anticipated for Pathway may include permits for road, bridge and highway crossings or road occupancy permits from CDOT and stormwater discharge permits and APEN from CDPHE. Xcel Energy will negotiate easements with the Colorado State Land Board for the portions of the Pathway transmission line on state-owned lands. The CPUC has provided written approval of the CPCN for Segments 1 through 5 based on a determination that Pathway is in the public interest. All necessary land use, environmental, and construction permits, approvals and authorizations will be obtained prior to the start of and during construction as required.

Pathway will not be inconsistent with the South Platte Basin Implementation Plan (Colorado Water Conservation Board 2022). Water quality will be maintained during construction by using BMPs and the site-specific SWMP and the GESC Plan. The transmission line will span streams and waterways that cross the corridor. A permanent water supply will not be required for Pathway.



# REGULATIONS GOVERNING AREAS AND ACTIVITIES OF STATE INTEREST IN ARAPAHOE COUNTY ARTICLE V PART A, GENERAL APPROVAL CRITERIA

## Approval Criteria

## Compliance

(3) (Only Applicable to Major Permit Review) The applicant has the necessary expertise and financial capability to develop and operate the Proposed Project consistent with all requirements and conditions.

Xcel Energy has both the necessary expertise and financial capability to develop and operate Pathway. Per the CPUC CPCN approval on June 2, 2022, in doing so, the CPUC determined that Xcel Energy met its burden of proof to establish that Pathway is in the State's public interest and recovery of the anticipated cost of Pathway is appropriate. All necessary land use, environmental, and construction permits, approvals and authorizations will be obtained prior to the start of and during construction as required, and BMPs will be implemented to address public health, safety, and welfare and in accordance with permit conditions.

(4) (Only Applicable to Major Permit Review) The Proposed Project is technically and financially feasible.

Per the CPUC CPCN approval on June 2, 2022, in doing so, the CPUC determined that Xcel Energy met its burden of proof to establish that Pathway is in the State's public interest and recovery of the anticipated cost of Pathway is appropriate. All necessary land use, environmental, and construction permits, approvals and authorizations will be obtained prior to the start of and during construction as required, and BMPs will be implemented to address public health, safety, and welfare and in accordance with permit conditions. Xcel Energy's 2024 Annual Report is provided as 1-ASI25-001-Annual Report.

(5) The Proposed Project is not subject to significant risk from natural hazards.

Pathway has been sited and will implement BMPs to avoid and minimize erosion impacts to soils. Pathway does not contain any mapped natural hazard areas or unique natural features. Pathway is designed to withstand seismic considerations and is not anticipated to impact or be impacted by subsidence.

(6) The Proposed Project is in general conformity with the applicable comprehensive plans.

Pathway is a necessary capital improvement to expand the existing electric transmission grid system in Colorado. Pathway complies with the following policies of the 2018 Arapahoe County Comprehensive Plan (Arapahoe County 2022): Growth Management; Public Facilities and Services; Neighborhood Livability; Economic Health; Transportation and Mobility; Natural and Cultural Resources and Environmental Quality; Rural Area; and Tier 3. A summary of Pathway compliance with each of these policies is provided in Section 3.4 of the 1041 Permit Application. Compliance with the applicable subgoals and polities of each of these policies are discussed in more detail in 2-ASI25-001\_LE25-003-Consistency with Comp Plan.



# REGULATIONS GOVERNING AREAS AND ACTIVITIES OF STATE INTEREST IN ARAPAHOE COUNTY ARTICLE V PART A, GENERAL APPROVAL CRITERIA

## Approval Criteria

(7) The Proposed Project will not have a significant adverse effect on the capability of local government to provide services or exceed the capacity of service delivery systems.

(8) (Only Applicable to Major Permit Review) The Proposed Project will not create an undue financial burden on existing or future residents of the County.

(9) (Only Applicable to Major Permit Review) The Proposed Project will not significantly degrade any substantial sector of the local economy.

(10) The Proposed Project will not unduly degrade the quality or quantity of recreational opportunities and experience.

## Compliance

Given the relatively small size of the crews needed for construction of Pathway, no impacts to availability of public services or service delivery systems are anticipated.

Xcel Energy does not anticipate any negative financial impacts or burdens to Arapahoe County residents due to construction, operation, and maintenance of Pathway. Per the CPUC CPCN approval on June 2, 2022, in doing so, the CPUC determined that Xcel Energy met its burden of proof to establish that Pathway is in the State's public interest and recovery of the anticipated cost of Pathway is appropriate.

Pathway will not degrade any substantial sector of the local economy. Pathway will deliver short- and long-term economic benefits to Arapahoe County. More immediately, Pathway construction will require substantial amounts of contract labor while also providing local jurisdictions and host communities with additional tax revenues and potential employment opportunities. Once Pathway has been constructed, it will drive ongoing job opportunities and employment associated with the clean energy projects (wind, solar, etc.) that will ultimately interconnect to Pathway.

Pathway will not impact the quality or quantity of recreational opportunities and experiences. Three existing pedestrian trails are crossed by the proposed Pathway route where it crosses E Quincy Avenue near the Arapahoe County Fairgrounds, Senac Creek at E Quincy Avenue, and Black Shack Creek at E Quincy Avenue (see the Recreational Uses Map [1-ASI25-001-Recreational Uses Map]); the three existing transmission lines on the south side of E Quincy Avenue also cross the existing trails along Senac Creek and Black Shack Creek where these creeks cross E Quincy Avenue. The Pathway route in Arapahoe County is located approximately 1 mile north of the Aurora Reservoir. Pathway is not expected to impact or change the character of the Aurora Reservoir recreation area or recreational experiences because of the distance between the recreation resource and Pathway. During construction, trails may need to be temporarily closed during stringing or other construction activities for public safety. Trails will be reopened after work has been completed and will have no long-term impacts. Pathway will work with Arapahoe County as needed regarding trail crossings.



# REGULATIONS GOVERNING AREAS AND ACTIVITIES OF STATE INTEREST IN ARAPAHOE COUNTY ARTICLE V PART A, GENERAL APPROVAL CRITERIA

## Approval Criteria

(11) The planning, design and operation of the Proposed Project will reflect principals of resource conservation, energy efficiency and recycling or reuse.

(12) The Proposed Project will not significantly degrade the environment. Appendix “A” includes the considerations that will be used to determine whether there will be significant degradation of the environment. For purposes of this section, the term environment shall include:

(a) Air quality.

Pathway is not expected to generate smoke. Dust (particulate emissions) will be suppressed using water trucks. Xcel Energy will apply for a CDPHE APEN prior to construction if needed and will follow state standards to control the release of fugitive dust related to construction, if necessary. The APEN will be required for a land disturbance greater than 25 contiguous acres and land development activities with a duration longer than 6 months.

(b) Visual quality.

The Pathway transmission line route through Arapahoe County has been co-located along existing transmission infrastructure and county roads as much as possible to reduce visual impacts. In addition, the weathering steel poles will oxidize to resemble a natural brown look and existing vegetation will be preserved to the extent possible to maintain visual contrast in the landscape.

(c) Surface water quality.

Impacts to water quality will be addressed through erosion and sediment control measures will be outlined in the SWMP as well as the GESC Plan. Construction of the transmission line will not create runoff in excess of previous site levels and will not change existing topography or adversely affect drainage. There will be no alteration in the pattern or intensity of surface drainage or any impacts to lakes or reservoirs as a result of construction or operation of the transmission line.

## Compliance

Once Pathway has been constructed, it will drive ongoing development associated with the clean energy projects (wind, solar, etc.) that will ultimately interconnect to Pathway. Pathway will support Xcel Energy's Clean Energy Plan (Xcel Energy 2021) that is estimated to deliver as much as an 85 percent reduction in carbon dioxide emissions by 2030 and add approximately 6,500 megawatts of new wind, solar, and other resources.



# REGULATIONS GOVERNING AREAS AND ACTIVITIES OF STATE INTEREST IN ARAPAHOE COUNTY ARTICLE V PART A, GENERAL APPROVAL CRITERIA

## Approval Criteria

## Compliance

(12) The Proposed Project will not significantly degrade the environment. Appendix “A” includes the considerations that will be used to determine whether there will be significant degradation of the environment. For purposes of this section, the term environment shall include:

(d) Groundwater quality.

Impacts to groundwater are not anticipated because the transmission poles will not be installed at a depth that is below the water table.

(e) Wetlands, flood plains, streambed meander limits, recharge areas, and riparian areas.

The transmission line will be sited to span floodplains, wetlands, and riparian areas to the extent practicable. Pathway will adhere to BMPs outlined in the SWMP as well as the GESC Plan, which will include erosion control and revegetation measures.

(f) Terrestrial and aquatic animal life.

Pathway will avoid sensitive habitats and known nesting locations to the extent practicable and will implement BMPs to avoid and minimize impacts to terrestrial and aquatic habitat, nesting and migratory birds, and listed species.

(g) Terrestrial and aquatic plant life.

Pathway will avoid or minimize impacts to vegetation as practicable. Impacts to most vegetation will be temporary and limited to the 150-foot-wide Pathway ROW and temporary construction areas. The Pathway ROW will be cleared of tall vegetation for ongoing maintenance. Measures will be implemented to minimize the spread of noxious weeds in the Pathway ROW. To avoid or minimize impacts to aquatic habitat within the Pathway ROW, surface waters, riparian areas, and wetlands in areas less than 1,400 feet width at the crossing will be spanned as practicable. Pathway will adhere to BMPs and erosion control measures outlined in the SWMP.

(h) Soils and geologic conditions.

Pathway will be constructed based on the result of geotechnical studies to effectively site transmission poles and avoid geological hazards. During construction, Xcel Energy’s contractor will minimize any soils impacts by strictly adhering to a SWMP regulated by CDPHE and will institute and maintain erosion and sediment control BMPs designed to protect soils and prevent erosion. Pathway is designed to withstand seismic considerations and is not anticipated to impact or be impacted by subsidence.



# REGULATIONS GOVERNING AREAS AND ACTIVITIES OF STATE INTEREST IN ARAPAHOE COUNTY ARTICLE V PART A, GENERAL APPROVAL CRITERIA

## Approval Criteria

## Compliance

(13) The Proposed Project will not cause a nuisance.

Nuisance vibrations or odors are not anticipated during construction or operation of Pathway. The CPUC provides reasonableness determinations associated with noise and requires CPCN applicants to evaluate the expected level of noise of the proposed transmission facilities. Xcel Energy is required to meet state standards as outlined in the Colorado Public Utilities Commission's Rules Regulating Electric Utilities 4 CCR 723-3. Xcel Energy is required to meet state standards as outlined in 4 CCR 723-3. The CPUC provides reasonableness determinations associated with noise and requires CPCN applicants to evaluate the expected level of noise of the proposed transmission facilities. Based on the noise study conducted for Pathway (Noise and EMF Study [1-ASI25-001-Noise and EMF Study]), the maximum projected noise level measured at 25 feet from the edge of the Pathway ROW is 49.8 A-weighted decibels (dBA), and the maximum projected noise level at 25 feet from the Harvest Mile Substation is 57 dBA. Per CPUC Rule 3206(f), noise levels below 50 dBA are not subject to further review (4 CCR 723-3). The Harvest Mile Substation is not located on land for which there is a zoning-dependent noise level limit deemed reasonable by PUC Rule 3206(f) as Rule 3206(f) does not identify an audible noise level that is deemed reasonable for land zoned agricultural. The projected noise levels from the Pathway transmission line and Harvest Mile Substation were deemed reasonable by the CPUC.

(14) The Proposed Project will not significantly degrade areas of paleontological, historic, or archaeological importance.

A Class I cultural resources desktop analysis identified areas previously surveyed and known cultural resources within a 150-foot buffer of the transmission line ROW. Within the Research Area, 4 previous cultural resource surveys have been conducted. These surveys include approximately 1.0 miles of Segment 5. Within the Research Area are 4 previously recorded cultural resources. These include: a prehistoric lithic scatter, a prehistoric open camp, a historic fence, and a historic transmission line. The open camp, fence, and transmission line have been determined Not Eligible for listing in the National Register of Historic Places (NRHP) by the Colorado Historic Society Office of Archaeology & Historic Preservation (OAHP), and the lithic scatter is Unevaluated (the site's eligibility for listing in the NRHP has not been evaluated by archaeologists or the OAHP). No transmission line poles will be constructed within site boundaries. BMPs will be implemented to avoid and minimize any potential impacts to these resources. Pathway is not located within any historic and archaeological areas of importance.



# REGULATIONS GOVERNING AREAS AND ACTIVITIES OF STATE INTEREST IN ARAPAHOE COUNTY ARTICLE V PART A, GENERAL APPROVAL CRITERIA

## Approval Criteria

## Compliance

(15) The Proposed Project will not result in unreasonable risk of releases of hazardous materials. In making this determination as to such risk, the Board's consideration shall include:

(a) Plans for compliance with federal and State handling, storage, disposal and transportation requirements.

No hazardous materials will be used, stored, or generated on site of Pathway facilities. Pathway activities will comply with applicable federal, state, and local laws and regulations regarding the use of hazardous substances, and activities will follow BMPs for the management of wastes to avoid and minimize effects from potential spills or other releases to the environment.

(b) Use of waste minimization techniques.

Waste generated during construction activities will be properly disposed of. Enclosed containment will be provided for trash disposal. Construction waste, including trash and litter, garbage, other solid waste, petroleum products, and other potentially hazardous materials, will be removed and taken to a disposal facility authorized to accept such materials. No hazardous materials will be permanently used, stored, or generated on site of Pathway facilities. Pathway will not require transportation of hazardous materials. Construction, operation, and maintenance activities will comply with applicable federal, state, and local laws and regulations regarding the use of hazardous substances. Construction activities will be performed by methods that prevent entrance or accidental spillage of solid matter, contaminants, debris, and other pollutants and wastes into flowing streams or dry watercourses, lakes, and underground water sources. All activities will follow BMPs for the management of wastes to avoid and minimize effects from potential spills or other releases to the environment. The substation and transmission line will require few maintenance visits during operation and can be considered a passive use of land. Waste will not be generated on an ongoing basis.

(c) Adequacy of spill prevention and response plans.

Pathway activities will comply with applicable federal, state, and local laws and regulations regarding the use of hazardous substances, and activities will follow BMPs for the management of wastes to avoid and minimize effects from potential spills or other releases to the environment.



# REGULATIONS GOVERNING AREAS AND ACTIVITIES OF STATE INTEREST IN ARAPAHOE COUNTY ARTICLE V PART A, GENERAL APPROVAL CRITERIA

## Approval Criteria

(16) (Only Applicable to Major Permit Review) The benefits accruing to the County and its citizens from the proposed activity outweigh the losses of any resources within the County, or the losses of opportunities to develop such resources.

(17) The Proposed project is the best alternative available based on consideration of need, existing technology, cost, impact and these regulations.

## Compliance

Pathway is anticipated to provide economic benefits to Arapahoe County. The short-term economic benefits of Pathway are driven by the \$1.7 billion investment in electric transmission assets in Colorado, which includes payments for land acquisitions and easements, as well as the creation of construction jobs and indirect economic stimulus of construction activities. More immediately, Pathway construction will provide local jurisdictions and host communities with potential additional tax revenue and employment opportunities. Revenue may increase during construction for local businesses such as restaurants, gas stations, grocery stores, hotels, and other local businesses.

Once Pathway has been constructed, it will facilitate ongoing job opportunities and employment associated with the clean energy projects (wind, solar, etc.) that may ultimately interconnect to Pathway that will also provide tax revenues and employment opportunities. Expected long-term benefits include tax payments to the counties that will be crossed by the transmission line over the life of the project.

Several alternatives to Pathway were considered, including non-structural alternatives, structural alternatives, and design alternatives (Addendum to Routing and Siting Study for Segment 5 [2-ASI25-001\_LE25-003-Routing and Siting Study]).

Alternate locations and routes, alternative types of facilities, use of existing ROWs, joint use of ROWs with other utilities, and upgrades to existing facilities were analyzed. Pathway routing and siting efforts were divided by segment and documented in a series of routing and siting studies. Each routing and siting study is interrelated due to the overlap in segment Study Areas and shared substation endpoints. Each Routing and Siting Study documents the process utilized to review and consider reasonable siting and routing alternatives for the new major electrical facilities (pursuant to CRS 29-20-108(4)(a) and (b)). The Addendum to Segment 5 Routing and Siting Study provides an alternatives analysis to address this requirement. Resources that influenced the selection of the proposed route in Arapahoe County included: existing linear infrastructure, location of proposed route to the south of Arapahoe County, location of existing Harvest Mile Substation, residences, existing land uses (solar facilities, Arapahoe County Fairgrounds, Aurora Reservoir, Peter Binney Water Purification Facility), future proposed projects, and Air National Guard flight training areas.



# REGULATIONS GOVERNING AREAS AND ACTIVITIES OF STATE INTEREST IN ARAPAHOE COUNTY ARTICLE V PART A, GENERAL APPROVAL CRITERIA

Approval Criteria	Compliance
<p>(18) The Proposed Project will not unduly degrade the quality or quantity of agricultural activities.</p>	<p>The transmission line will be compatible with agricultural uses. The transmission line alignment avoids existing irrigation ditches and pivot irrigation in fields to minimize effects to existing productive agricultural operations. Current uses adjacent to the Pathway facilities will be able to continue mainly unchanged after construction of Pathway. Areas disturbed during construction will be restored in coordination with the landowners and their current land use.</p>
<p>(19) Cultural Resources. The Proposed Project will not significantly interfere with the preservation of cultural resources, including historical structures and sites, agricultural resources, the rural lifestyle and the opportunity for solitude in the natural environment.</p>	<p>A Class I cultural resources desktop analysis identified areas previously surveyed and known cultural resources within a 150-foot buffer of the transmission line ROW. Within the Research Area, 4 previous cultural resource surveys have been conducted. These surveys include approximately 1.0 miles of Segment 5. Within the Research Area are 4 previously recorded cultural resources. These include: a prehistoric lithic scatter, a prehistoric open camp, a historic fence, and a historic transmission line. The open camp, fence, and transmission line have been determined Not Eligible for listing in the NRHP by the OAHP, and the lithic scatter is Unevaluated (the site's eligibility for listing in the NRHP has not been evaluated by archaeologists or the OAHP). No transmission line poles will be constructed within site boundaries. BMPs will be implemented to avoid and minimize any potential impacts to these resources. Pathway is not located within any historic and archaeological areas of importance.</p>
<p>(20) Land Use. The Proposed Project will not cause significant degradation of land use patterns in the area around the Proposed Project.</p>	<p>Current land uses adjacent to the Pathway facilities will be able to continue mainly unchanged after construction of Pathway. The transmission line alignment avoids existing irrigation ditches and pivot irrigation in fields to minimize effects to existing agricultural operations. Areas disturbed during construction will be restored in coordination with the landowners and their current land uses.</p>
<p>(21) Compliance with Regulations &amp; Fees. The applicant has complied with all applicable provisions of these regulations and has paid all applicable fees.</p>	<p>Xcel Energy will comply with all applicable provisions of the § 1041 Regulations and has paid all applicable fees concurrently with the submittal of this Application.</p>



# REGULATIONS GOVERNING AREAS AND ACTIVITIES OF STATE INTEREST IN ARAPAHOE COUNTY ARTICLE V PART C, ADDITIONAL CRITERIA APPLICABLE TO MAJOR FACILITIES OF A PUBLIC UTILITY

## Approval Criteria

(1) Areas around major facilities of a public utility shall be administered so as to minimize disruption of the service provided by the public utility.

(2) Areas around major facilities of a public utility shall be administered so as to preserve desirable existing community and rural patterns.

## Compliance

The transmission line will have a typical ROW of 150 feet wide, 75 feet on either side of the centerline. Vegetation management within the transmission line ROW will be required prior to, or in conjunction with, construction. Trees and tall vegetation growing within or near the Pathway ROW can cause downed lines, power outages, and wildfire. Vegetation management crews will work to prevent these situations from occurring. Vegetation management involves the use of various types of treatment including removing, pruning, and mowing vegetation and the treatment of vegetation with herbicides to ensure safe operations. The transmission line will be inspected regularly (at least annually) to look for the following:

- Non-compatible vegetation and hazards within the Pathway ROW.
- Equipment needing repair or replacement.
- Pathway ROW encroachments, which can be hazardous to safety and reliable operations.
- Anything that might jeopardize safe, reliable operation of the power line.

Operations and maintenance staff must visit the Pathway ROW for these inspections, but visits typically are minimal, and landowners will be contacted prior to on-site inspections or maintenance. However, in cases of emergency, advanced contact may not be possible.

Current land uses adjacent to the Pathway facilities will be able to continue mainly unchanged after construction of Pathway. Areas disturbed during construction will be restored in coordination with the landowners and their current land use.



# REGULATIONS GOVERNING AREAS AND ACTIVITIES OF STATE INTEREST IN ARAPAHOE COUNTY ARTICLE V PART C, ADDITIONAL CRITERIA APPLICABLE TO MAJOR FACILITIES OF A PUBLIC UTILITY

## Approval Criteria

(3) Where feasible, major facilities of a public utility shall be located so as to avoid direct conflict with adopted local comprehensive, State and regional master plans.

(4) Where feasible, major facilities of a public utility shall be located so as to minimize dedication of new right-of-way and construction of additional infrastructure (e.g., gas pipelines, roads, and distribution lines.)

## Compliance

There are no known conflicts with adopted local comprehensive, state, and regional master plans. Pathway is a necessary capital improvement to expand the existing electric transmission grid system in Colorado.

Pathway will require landowners to grant new transmission line ROW easements and Xcel Energy will construct new infrastructure, limited to the facilities discussed in this Application. Of the approximately 18-mile transmission line route in Arapahoe County, approximately 13 miles (76 percent) is co-located along existing electric transmission infrastructure and existing roads. Pathway is sited in areas already encumbered by linear facilities and does not prohibit adjacent development. Pathway will interconnect at the existing Harvest Mile Substation within the existing fenceline; no additional land adjacent to the existing substation will be necessary for Pathway. No additional demand for infrastructure, facilities, housing, water (other than trucked-in water for construction), wastewater treatment, or public transportation will be created. Pathway will not require additional local government services beyond those currently provided in the area.



# ARAPAHOE COUNTY LAND DEVELOPMENT CODE SECTION 5-7.3.B, LOCATION AND EXTENT GENERAL REQUIREMENTS AND PROCEDURE

Requirement	Compliance
<p>(1) Applicability</p> <p>(a) No road, park, public way, ground, or space, no public building or structure, and no major facility of a public utility shall be constructed or authorized in the unincorporated areas of Arapahoe County unless and until the proposed location and extent thereof has been submitted to and approved by the Arapahoe County Planning Commission.</p> <p>(b) Routine extensions of public utility lines and minor modifications to existing utility lines and/or facilities shall not be subject to this procedure.</p>	<p>The applicant, Xcel Energy, is requesting Arapahoe County’s approval to construct, maintain, and operate Pathway, a major facility of a public utility, in unincorporated Arapahoe County. Therefore, a Location and Extent Permit Application must be submitted to and approved by the Arapahoe County Planning Commission.</p>
<p>(2) Procedures</p> <p>(a) Location and Extent applications shall follow the application procedures in Section 5-2.1.B.</p> <p>(b) When the application is determined to be complete, staff will set a hearing date before the Planning Commission.</p> <p>(c) If the Planning Commission disapproves the proposed public facility, or approves it with conditions the applicant is not willing to accept, the applicant may appeal such decision to the Board of County Commissioners, and the Planning Commission shall communicate the reasons for such disapproval to the Board, who may overrule such disapproval by a majority vote.</p>	<p>Xcel Energy understands that this Location and Extent Permit Application will follow the application procedures in Section 5-2.1.B, including the public hearing requirements and appeal process.</p>

# ARAPAHOE COUNTY LOCATION AND EXTENT GENERAL REQUIREMENTS AND PROCEDURE

## **Arapahoe County Land Development Code Section 5-7.3.B, Location and Extent General Requirements and Procedure**

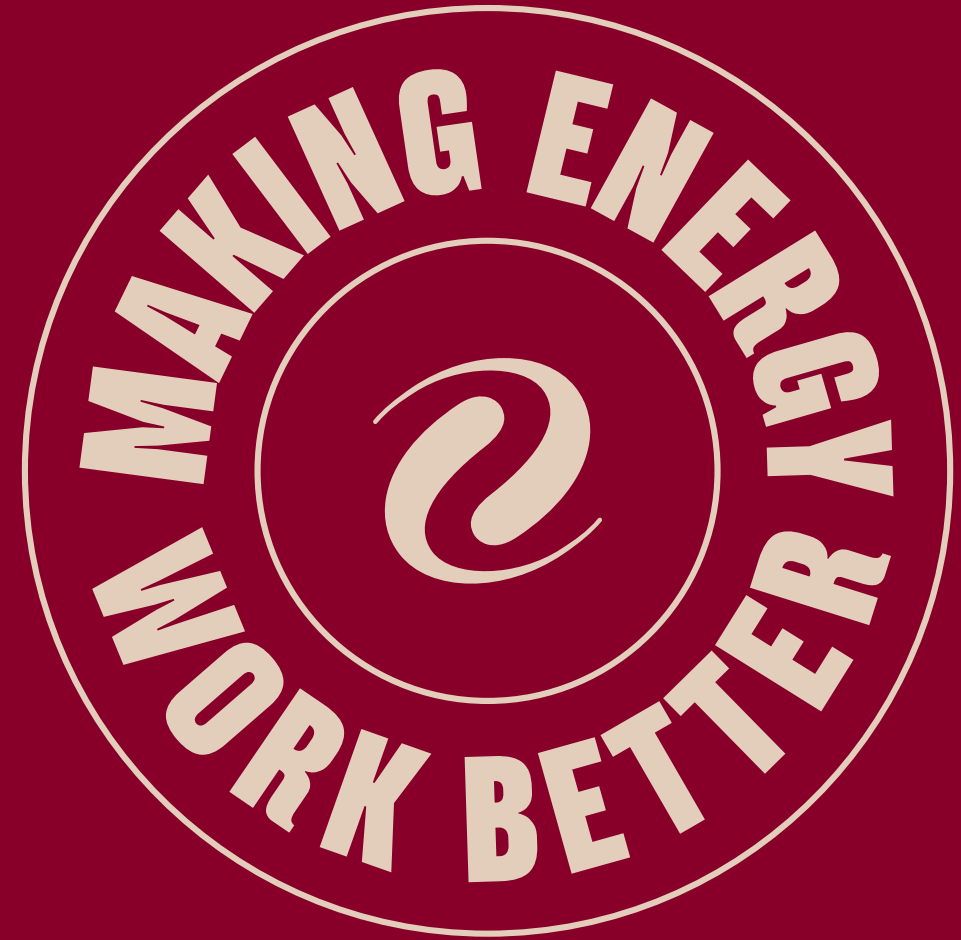
The routing and site selection, construction, maintenance, and operation of Pathway will comply with applicable general requirements and procedure



# ARAPAHOE COUNTY LAND DEVELOPMENT CODE SECTION 5-7.3.B, LOCATION AND EXTENT GENERAL REQUIREMENTS AND PROCEDURE

Requirement/Procedure	Compliance
<p>(3) Public Notice</p> <p>(a) The applicant shall be responsible for providing public notice prior to the Planning Commission hearing in compliance with the public notice requirements in Section 5-2.2 of this Code.</p> <p>(b) If a Planning Commission decision is appealed, the applicant shall be responsible for providing notice of the Board of County Commissioners hearing in compliance with the requirements in Section 5-2.2 of this Code.</p>	<p>Xcel Energy provided all required public hearing notices for the Location and Extent Permit Application in compliance with the public notice requirements in Section 5-2.2 which include mailings to adjacent property owners 15 days prior to the hearing and posting signs 15 days prior to the hearing. Xcel Energy understands that if the Planning Commission hearing is appealed, Xcel Energy will provide notice of the Board of County Commissioners hearing in compliance with the requirements in Section 5-2.2.</p>
<p>(4) Decision and Findings</p> <p>(a) The Planning Commission and the Board of County Commissioners, when applicable, may approve the facility as submitted, approve it with conditions, or deny the facility. The conditions to be imposed are those necessary, at the discretion of the Planning Commission and Board of County Commissioners, to mitigate or eliminate any adverse impacts of the proposed facility on the surrounding area, and may include the posting of sufficient performance guarantees with the County to guarantee the construction of any improvements.</p> <p>(b) Upon approval of the Location and Extent, a photographic mylar or equivalent, prepared in accordance with the standards established in the Development Application Manual, Part 5, shall be submitted to the PWD Department for the Planning Commission’s signature. The mylar will be kept on file at the PWD Department Planning Division.</p>	<p>Xcel Energy understands that the Planning Commission and the Board of County Commissioners, when applicable, may approve Pathway as submitted, approve it with conditions, or deny Pathway. Xcel Energy understands that the conditions to be imposed are those necessary, at the discretion of the Planning Commission and Board of County Commissioners, to mitigate or eliminate any adverse impacts of Pathway on the surrounding area, and may include the posting of sufficient performance guarantees with the County to guarantee the construction of any improvements. Upon approval of the Location and Extent Permit Application, Xcel Energy will submit a photographic mylar or equivalent, prepared in accordance with the standards established in the DAM, Part 5, to the Arapahoe County Public Works and Development Department.</p> <p>Pathway complies with the following policies of the 2018 Arapahoe County Comprehensive Plan (Arapahoe County 2022): Growth Management; Public Facilities and Services; Neighborhood Livability; Economic Health; Transportation and Mobility; Natural and Cultural Resources and Environmental Quality; Rural Area; and Tier 3. A summary of Pathway compliance with each of these policies is provided in Section 2.2 of the Location and Extent Permit Application. Compliance with the applicable subgoals and polies of each of these policies are discussed in more detail in 2-AS125-001_LE25-003-Consistency with Comp Plan and was previously discussed in this presentation under 1041 Approval Criteria Article V Part A.6: <i>The Proposed Project is in general conformity with the applicable comprehensive plans.</i></p>

# QUESTIONS AND ANSWERS



[xcelenergy.com](http://xcelenergy.com)