

Mary Carter Greenway East Trail Bridges Replacement (Construction)

Joint Project Application

South Suburban Park and Recreation District

Ms Melissa Reese-Thacker

M: 303-435-8222

Ms Melissa Reese-Thacker

4810 E County Line Road
Littleton, Colorado 80126

melissar@ssprd.org
O: 303-483-7023
M: 303-435-8222

Application Form

Application Summary

Grant Category*

Select One:

Joint Project

Primary Contact Information*

Please provide information for the primary contact for this project in the following format.

Agency:

Name:

Title:

Telephone:

Email:

Agency: South Suburban Park and Recreation District

Name: Melissa Reese-Thacker

Title: Interim Director of Planning, Design & Construction

Telephone: 303.483.7023

Email: MelissaR@ssprd.org

Project Type*

Select One:

- **Trail Project:** Trail/trailhead construction or improvement, including stream/road crossings and trailhead amenities (such as parking, restrooms or shelters)
- **Site Improvement Project:** New construction, improvement, repair, or replacement of passive outdoor recreation amenities
- **Acquisition Project:** Eligible projects include fee simple acquisition of land for public open space or trails; acquisition of buffer land; acquisition of a conservation easement; and/or acquisition of water rights
- **Other Project:** Other allowable projects include stream/habitat restoration, natural re-vegetation, and water quality improvement

Trail Project

Project Title*

Mary Carter Greenway East Trail Bridges Replacement (Construction)

Project Address

3000 West Carson Drive, Littleton, Colorado 80120

Project Location*

Select all that apply:

Littleton

GPS Coordinates (Latitude in Decimal Degrees)*

Example: Dove Valley Regional Park

Latitude: 39.577303

39.580409

GPS Coordinates (Longitude in Decimal Degrees)*

Example: Dove Valley Regional Park

Longitude: -104.828850

-105.031778

Grant Request Amount*

\$97,500.00

Cash Match Amount*

\$97,500.00

Total Project Amount*

Total project amount includes grant request and cash match only. Please do not include in-kind match.

\$195,000.00

Cash Match Percentage*

Calculate cash match as % of total project cost.

50

Project Partners

List partner agencies if applicable.

Executive Summary*

Highlight key points of your proposal, such as project description, components, deliverables, need, goals, beneficiaries, planning, etc.

South Suburban Parks and Recreation seeks construction funding from the South Platte Working Group to replace the deteriorating South Platte Park East Trail Bridge (Bridge 1) and the adjacent bridge over Jackass Gulch (Bridge 2), which are two essential pedestrian links within South Platte Park and the Mary Carter Greenway Trail Corridor. These structures are critical for maintaining safe, accessible, and sustainable trail connections through a high-use area that traverses wetlands and sensitive habitat zones.

The existing wooden bridges no longer meet current safety, accessibility, or capacity standards. Increased use of the East Trail, a connector to the Mary Carter Greenway Trail, is driven by thousands of new residents expected from nearby developments like Aspen Grove and other housing south of Mineral Avenue, underscoring the urgency of this investment. The proposed project addresses these growing demands while preserving the character and ecological integrity of the trail corridor.

This project represents the next phase in a broader vision for enhancing the Mary Carter Greenway. The 2023 Mary Carter Greenway Trail Study, which included robust public engagement, identified the replacement of these bridges as a top priority. More than 200 community comments highlighted safety, capacity, and wildlife protection as the public's leading concerns.

This project aligns with the goals of the 2021 Arapahoe County Open Spaces Master Plan and the 2022 South Suburban Strategic Plan by supporting goals of environmental stewardship, regional connectivity, equitable access to nature, and delivering a safe, sustainable, and scenic trail crossing for current and future users.

Authorized Signature

Certification and Authorized Signature Form*

Please attach completed Certification and Authorized Signature Form as a PDF document. Form must be signed by highest authority in agency or authorized individual. *Staff will email you the form.*

Please name your file as follows: *Applicant_CertificationandAuthorizedSignatureForm.pdf*

SSPRD_CertificationandAuthorizedSignatureForm.pdf

Project Timeline

Project Timeline Form*

Please attach completed Project Timeline Form as a PDF document. *Staff will email you the form.*

Please name your file as follows: *Applicant_TimelineForm.pdf*

SSPRD_TimelineForm.pdf

Project Budget

Budget Forms*

Please attach completed Summary Budget Form and Detailed Expense Budget Form as a single PDF document.
Staff will email you the form.

Please name your file as follows: *Applicant_BudgetForms.pdf*

SSPRD_BudgetForms.pdf

Project Narrative

Question 1*

Describe the project goals, scope, expected results, and deliverables. Discuss the current condition of the project site and what improvements, if any, are proposed and why. Discuss how this project preserves open space, improves access to the outdoors, creates connectivity, and/or provides educational opportunities.

South Suburban is applying for construction funding from the South Platte Working Group to replace the aging East Trail Bridges, key pedestrian crossings within South Platte Park. These bridge replacements were identified as a priority project in the 2023 Mary Carter Greenway Trail Study, which highlighted the need to accommodate increased trail use from new residential developments along Santa Fe Drive and to preserve the pedestrian-only character of the East Trail. The new residential developments, including the Aspen Grove redevelopment, are expected to attract thousands of residents, thereby increasing demand for safe and accessible trail infrastructure. The East Trail Bridges will help manage this growth within a sensitive wildlife area of South Platte Park.

The existing wooden bridges are deteriorating and no longer meet the safety, accessibility, or capacity needs of the growing trail user base. The proposed replacements will be slightly longer, prefabricated Glu-Laminated timber structures designed to span the existing channel and reduce erosion at the west abutment.

A Glu-Lam is a type of engineered wood structure made by bonding together multiple layers of dimensional lumber with durable, moisture-resistant adhesives. This process creates a strong, stable, and flexible material that can span longer distances than solid wood while maintaining a natural aesthetic. These structures' design and aesthetic are ideal for South Platte Park because they offer the strength and durability of engineered wood while maintaining a natural aesthetic that blends seamlessly with the park's environment. With proper maintenance, these structures can last up to 40 years.

Deliverables include the construction of both bridges, erosion mitigation, and ADA-compliant improvements.

The project aligns with the goals of the South Platte Working Group, the South Suburban Master Plan, and the 2021 Arapahoe County Open Spaces Master Plan by supporting regional connectivity and enhancing access to nature.

Question 2*

Describe the community/neighborhood and user groups the project will serve. Discuss the type of users (children, families, seniors, etc.), and estimate the number of users that will benefit annually. How did you arrive at this estimate? *Include up to five community support letters in the Attachments section. Support letters should come from users, working groups, community members, volunteers, schools, etc. Letters should be dated within the last six months.*

The East Trail Bridges provide a vital connection to the Mary Carter Greenway. The Mary Carter Greenway is a regional trail that serves the entire south metro area. It runs through the cities of Littleton (5.18 miles of trail), Sheridan (2.01 miles of trail), and Englewood (1.04 miles of trail) and continues into Denver. The communities and neighborhoods that use the Mary Carter Greenway are exceptionally diverse due to the trail's length and numerous trail connections.

The 2017 South Platte Park Management Plan estimates that in 2015, the park had 580,000 visitors for trail use alone, excluding fishing, river use, and program participation. More recent trail counter data indicate that this area receives an average of over 1,000 daily trail users. This number is expected to increase in the coming years due to the area's residential development and planned access points to the Mary Carter Greenway.

Question 3*

Discuss the need and urgency for this project and why it is a priority. Was the project prioritized in a master plan or other planning document (including County Comprehensive Plan, County Open Space Master Plan, etc.), an independent community planning process, a working group, etc.? Is this part of a larger phased project? What opportunities will be lost if this project is not funded now?

The Mary Carter Greenway Trail Study identifies the East Trail Bridges as a priority project because of their worsening condition, erosion of the west abutment, and increased trail usage. The current bridges are narrow and pose safety risks. Built in 1989, these bridges have reached the end of their lifespan.

Without these bridge replacements, users may unintentionally access sensitive wildlife areas not designed for high commuter traffic. The project is urgent to protect trail and bridge users, while also protecting the ecological integrity of the East Trail and the surrounding wetlands.

Delaying this project could result in further erosion, increased maintenance costs, and safety risks for users. The bridge is a vital connection for both recreational and commuter traffic, and its replacement is necessary to ensure continued safe access to the Mary Carter Greenway and South Platte Park.

Bridge 1 currently spans across Jackass Gulch. The upstream developments are expected to increase water flow in that area significantly, which the current bridge cannot accommodate. Delaying the replacement of this bridge would increase the risk of Bridge 1 washing out entirely.

Bridge 2 is currently used for maintenance of the East Trail. However, due to the deterioration of the bridge, it can no longer safely support the weight of several of the park's maintenance vehicles. If the replacement of this bridge is delayed, it could further impact park maintenance operations and cut off public access to this area.

Both bridges were carefully designed to accommodate the increased water flow in Jackass Gulch. The design intentionally omitted handrails on both structures to allow water to pass freely over each bridge if necessary. The existing bridge with a railing, Bridge 2, is at risk of debris becoming lodged in the railings if the gulch fills suddenly, which could cause additional damage to the bridge.

Question 4*

Summarize any planning completed prior to submitting this Joint Project proposal. Is design and engineering complete? Does the project necessitate a zoning change? List any permits that need to be obtained and status of obtaining those permits (Federal 404, County or City, Storm Water Drainage, etc.).

Planning for the South Platte Park East Trail Bridges replacement is supported by the Mary Carter Greenway Trail Study and a 2023 Environmental Assessment (Appendix D of the study). The study confirms that the existing bridge alignments can be reused to avoid significant wetland impacts and regrading. South Suburban has partnered with FHU to complete preliminary hydraulic modeling and site analysis. The project has a 100% design, and it is ready for the next phase of construction.

Section 404 and 408 permits from the U.S Army Corps of Engineers will be required due to proximity to wetlands and drainage from Jackass Gulch. South Suburban is coordinating with the City of Littleton and the Mile High Flood District and will submit a floodplain development permit. The project is consistent with local and regional plans and will be coordinated with all relevant agencies to ensure compliance and minimize environmental impacts.

No zoning changes are required.

In addition, a City of Littleton Floodplain Development Permit (FDP) may also be required due to the bridge's location within the South Platte River floodway. FHU completed the floodplain analysis using the 2022 Flood Hazard Analysis and submitted a no-rise certification.

Although the project's disturbance area is under one acre and does not require a CDPHE stormwater discharge permit, a SWMP will be prepared following the City of Littleton criteria.

No additional right-of-way acquisition or utility relocations are anticipated. The District and FHU are coordinating with the City of Littleton and Mile High Flood District (MHFD) to ensure all permitting and technical requirements are met.

Question 5*

Describe the timeframe needed to complete the project. Discuss the agency's capacity to complete the project, including project management, resources, and experience implementing similar projects.

The project construction will be completed within 12 months of the joint project award. South Suburban will lead the project with support from FHU, which developed a conceptual design and environmental assessment for the East Trail Bridge as part of the Mary Carter Greenway Trail Study.

South Suburban has extensive experience managing similar infrastructure projects, including the East Bank Trail system, in-river improvements at South Platte Park, and the replacement of several pedestrian bridges, including the recent Elati St. Bridge over the High Line Canal.

South Suburban maintains over 100 miles of trails and has successfully delivered numerous capital projects in partnership with Arapahoe County, City of Littleton, MHFD, and other stakeholders. South Suburban has the staff, resources, and expertise to complete this project on time and within budget.

Question 6*

Summarize any efforts to obtain public input, disseminate information to the public, develop partnerships, and garner community support for this project. List the stakeholders that are involved. Discuss any known or

anticipated opposition to this project and how this will be addressed. *Include letters, petitions, news articles, or other documents evidencing opposition in the Attachments section.*

Public input for this project was gathered through two phases of engagement during the Mary Carter Greenway Trail Study, including online surveys, interactive maps, and a trail pop-up event. Nearly 200 comments were received, with safety and capacity as the top concerns. The East Trail Bridges, near Mineral Avenue and Carson Nature Center, were two of the most frequently mentioned locations.

Stakeholders include the City of Littleton, the Mile High Flood District, the Colorado Water Conservation Board, and local residents.

No opposition is anticipated. South Suburban will continue to inform the public and stakeholders throughout the construction process to ensure transparency and community alignment.

Question 7*

How much of your planned cash match is secured? If applicable, what are your plans for raising additional funds? Describe cash and in-kind match partnerships established for the project. Explain if partnerships were not possible or necessary for this project. *Include partner support letters in the Attachments section and include match from partners on the Budget Forms. Joint Project recipients are responsible for project cost overruns.*

South Suburban has secured the full cash match required for the construction of the South Platte Park East Trail Bridges. A total of \$97,500.00 has been allocated for this effort, with funding committed through the South Suburban Capital Improvement Budget.

This amount will cover the consultant contract with FHU, internal project management, and permitting coordination.

Question 8*

Describe any scenic, historic, or cultural values associated with the project site. Will they be preserved or restored? Discuss specific natural resources at the site (including habitat, water, wildlife, and vegetation) and impacts to these resources as a result of this project. If applicable, discuss environmental sustainability benefits of this project (such as energy or water conservation, water quality improvement, etc.).

The South Platte Park East Trail is located within a scenic and ecologically sensitive area of South Platte Park, the nation's first floodplain park. The park acts as a barrier for downstream flooding of the South Platte River while preserving 880 acres of open space. This area encompasses wetlands, riparian habitats, and wildlife corridors that are actively used by birdwatchers and nature enthusiasts. The Mary Carter Greenway and Trail Study, along with its environmental assessment, confirms that the project areas encompass low-lying wetland areas that collect drainage from Jackass Gulch, as well as habitats for migratory birds and other wildlife.

The project promotes environmental sustainability by protecting sensitive wildlife habitats and preserving access to nature for future generations, utilizing natural materials that blend seamlessly with the surrounding landscapes.

Question 9*

Discuss ownership and legal access at the proposed project site. Detail any third-party rights, easements, or other encumbrances that exist.

The South Platte Park East Trail Bridges are located on property owned by the City of Littleton and managed by South Suburban through a long-standing agreement. South Suburban is the designated park and recreation provider for the City and is responsible for managing South Platte Park and the Mary Carter Greenway Trail.

All necessary access rights and easements are in place. The project area includes existing utility easements and trail infrastructure.

Question 10*

Describe long-term plans for maintaining the project. Who will be responsible for maintenance? Estimate annual costs to maintain the site, and explain how maintaining this project site affects your agency's budget.

South Suburban will be responsible for the long-term maintenance of the South Platte Park East Trail Bridges. South Suburban has maintained the Mary Carter Greenway and its associated infrastructure since the 1990s, with a robust maintenance program and a dedicated team in place. The bridges will be incorporated into existing maintenance schedules and budgets.

The bridges are part of an existing trail system, and no significant increase in maintenance costs is anticipated. South Suburban's experienced staff are well-equipped to manage the upkeep of the new structure and ensure it remains safe and accessible for all users.

Question 11*

If applicable, describe how this project will address inclusivity per Americans with Disabilities Act guidelines.

The replacement bridges will be designed to meet Americans with Disabilities Act (ADA) standards wherever feasible. Improvements will include wider paths, smoother transitions, and appropriate railings to enhance accessibility for all users, including individuals with mobility challenges. While the adjacent crusher fine trail on the East Trail will continue to have limited ADA accessibility due to its natural surface and pedestrian-only designation, the new bridge structures will be fully ADA-compliant.

Question 12*

If successful in obtaining Joint Project funding, how will the agency use this project to inform citizens about the value of the Arapahoe County Open Space Sales and Use Tax? Discuss plans for public outreach, signage, celebration, dedication, etc. *You are required to inform the County of any press about the project and any related events (ribbon cutting ceremonies, etc.). Additionally, acknowledgement of County support must be included in any press about the project.*

If awarded joint project funding from the South Platte Working Group, South Suburban will actively promote the role of the Arapahoe County Open Space Sales and Use Tax in making the South Platte Park East Trail Bridge replacement possible. South Suburban has a strong track record of recognizing County support through signage, public events, and communications.

South Suburban will coordinate with Arapahoe County to host a ribbon-cutting ceremony or community celebration upon project completion. In addition, South Suburban will continue to recognize Arapahoe County Open Spaces in its annual reports, budget documents, and public presentations, and will encourage partner agencies to do the same. The County's support will be highlighted as a key example of how public investment in open space and trails directly benefits local communities.

Attachments

Attachment 1: Evidence of Support from Highest Authority*

Please attach evidence of support from the agency's highest authority (official letter or resolution) as a PDF document. At a minimum, this document must include: project title, amount of grant funds requested, statement that matching funds are secured and/or efforts to secure funds are underway (include the amount of matching funds committed), and certification that the project will be open to the public or serve a public purpose upon completion. *A sample resolution is available on the Open Space website.*

Please name your file as follows: *Applicant_SupportfromHighestAuthority.pdf*
SSPRD_SupportfromHighestAuthority.pdf

Attachment 2: Evidence of Community Support

Please attach letters of support from users, working groups, community members, volunteers, schools, etc. (maximum of 5) as a single PDF document. Letters should be dated within the last 6 months.

Please name your file as follows: *Applicant_CommunitySupport.pdf*
SSPRD_CommunitySupport.pdf

Attachment 3: Documentation of Opposition

Please attach documentation of opposition as a single PDF document. If there is no known opposition to this project, please attach a page stating that this section is not applicable.

Please name your file as follows: *Applicant_Opposition.pdf*
SSPRD_Opposition.pdf

Attachment 4: Evidence of Commitment from Project Partners

Please attach evidence of commitment from project partners (such as partner support letters or commitment to provide cash/in-kind match) as a single PDF document. There is no maximum allowable number of partner support letters. If there are no partners for this project, please attach a page stating that this section is not applicable.

Please name your file as follows: *Applicant_PartnerCommitments.pdf*
SSPRD_PartnerCommitments.pdf

Attachment 5: Primary Project Photo*

Please attach one high resolution photo in JPG format. Please choose the photo that provides the best overall representation of your project. This photo will be used for presentations and/or publications.

Please name your file as follows: *Applicant_PrimaryPhoto.jpg*

SSPRD_PrimaryPhoto.jpg

Attachment 6: Photos

Please attach photos of existing conditions at the project site (including captions) as a single PDF document. Include conceptual drawings if applicable.

Please name your file as follows: *Applicant_Photos.pdf*

SSPRD_Photos.pdf

Attachment 7: Maps*

Please attach a site map and a vicinity map as a single PDF document.

Please name your file as follows: *Applicant_Maps.pdf*

SSPRD_Maps.pdf

Attachment 8: Other Attachments

Please attach additional supporting documentation (news article, cost estimate, appraisal, title commitment, etc.) as a single PDF document.

Please name your file as follows: *Applicant_OtherAttachments.pdf*

SSPRD_OtherAttachments.pdf

Confirmation

Please click the "I Agree" button below to certify that your application is complete and ready to submit. Once submitted, applications are final and cannot be returned.*

I agree

File Attachment Summary

Applicant File Uploads

- SSPRD_CertificationandAuthorizedSignatureForm.pdf
- SSPRD_TimelineForm.pdf
- SSPRD_BudgetForms.pdf
- SSPRD_SupportfromHighestAuthority.pdf
- SSPRD_CommunitySupport.pdf
- SSPRD_Opposition.pdf
- SSPRD_PartnerCommitments.pdf
- SSPRD_PrimaryPhoto.jpg
- SSPRD_Photos.pdf
- SSPRD_Maps.pdf
- SSPRD_OtherAttachments.pdf



ARAPAHOE COUNTY OPEN SPACES

Certification and Authorized Signature Form

Please attach this form to grant and joint project applications submitted through the Arapahoe County Open Spaces Online Grant Portal.

By signing this form, I certify that:

- The information included in this application is true to the best of my knowledge.
- If funded, the applicant commits to completing the proposed project.
- If funded, the applicant accepts responsibility for any cost overruns necessary to complete the project.
- If funded, the completed project will be open to the public or will otherwise serve a public purpose.
- If funded, the applicant agrees to maintain the completed project site or to continue its maintenance agreement with a partner agency as outlined in the application.
- I am authorized to sign on behalf of the applicant.

Authorized Signature (highest authority in agency or authorized individual)

7/24/25
Date

Rob Schoeber, Interim Executive Director

Printed Name and Title

Mary Carter Greenway East Trail Bridges Replacement

Grant Project or Joint Project Name

Applicant: South Suburban Park and Recreation District

Project Title: Mary Carter Greenway East Trail Bridge Replacement Project



**ARAPAHOE COUNTY
OPEN SPACES**

2025 Project Timeline Form

Task	Oct 2025	Nov 2025	Dec 2026	Jan 2026	Feb 2026	Mar 2026	Apr 2026	May 2026	Jun 2026	Jul 2026	Aug 2026	Sep 2026
Grant Award Notification												
IGA Executed (Project Start Date)												
Project Bid Award												
Permitting												
Mobilization												
Demolition												
Earthwork												
Installation												
ACOS Status Report												
Final Report												

Summary Budget Form - Joint Project Application

Source of Funds	Date Funds Secured	Grant Request	Cash Match	Total Project Funds
SPWG Grant		\$97,500		\$97,500
Applicant Cash Match	1/1/2022		\$97,500	\$97,500
Totals		\$97,500	\$97,500	\$195,000

MATCH REQUIREMENTS	Total Project Cost:	\$195,000.00
	Cash Match % Required:	50%
	Cash Match % Budgeted:	50%
	Cash Match Amount Required:	\$97,500.00
	Cash Match Amount Budgeted:	\$97,500.00

**match fields calcula *match fields calculate automatically*

Applicant: South Suburban Park and Recreation District

Project Title: Mary Carter Greenway East Trail Bridges Replacement (Construction)

** Please do not include in-kind match on the Budget Forms*

Detailed Expense Worksheet - Joint Project Application					
	Budget	Line Item Detail	SPWG	Grantee	TOTAL
	Category	Description	Grant	Cash Match	
	Professional Services	Bonds and Insurance	\$10,000.00	\$10,000.00	\$20,000.00
		Project Bidding Costs	\$1,000.00	\$1,000.00	\$2,000.00
		Materials Testing	\$2,500.00	\$2,500.00	\$5,000.00
	Permitting		\$2,000.00	\$2,000.00	\$4,000.00
	Mobilization/GESC	Mobilization	\$7,500.00	\$7,500.00	\$15,000.00
		Construction Survey	\$3,000.00	\$3,000.00	\$6,000.00
		GESC (Erosion Control BMP's)	\$5,000.00	\$5,000.00	\$10,000.00
		Construction Fencing	\$1,500.00	\$1,500.00	\$3,000.00
	Demolition	Clear and Grub	\$1,500.00	\$1,500.00	\$3,000.00
		Remove Bridge 1	\$2,000.00	\$2,000.00	\$4,000.00
		Remove Bridge 2	\$3,000.00	\$3,000.00	\$6,000.00
	Earthwork / Drainage	Structure Excavation	\$500.00	\$500.00	\$1,000.00
		Structure Backfill	\$500.00	\$500.00	\$1,000.00
		Riprap and Geotextile	\$8,500.00	\$8,500.00	\$17,000.00
	Installation	Concrete	\$7,500.00	\$7,500.00	\$15,000.00
		Timber Bridge 2	\$21,000.00	\$21,000.00	\$42,000.00
		Timber Bridge 1	\$20,500.00	\$20,500.00	\$41,000.00
TOTALS			\$97,500.00	\$97,500.00	\$195,000.00
Applicant: South Suburban Park and Recreation District Project Title: East Trail Bridges Replacement (Construction) Date: 08-04-2025					

**South Suburban Park and Recreation District
Resolution # 2025-22**

**A RESOLUTION ENDORSING THE APPLICATION FOR
GRANT FUNDS FOR THE MARY CARTER GREENWAY
EAST TRAIL BRIDGES REPLACEMENT CONSTRUCTION**

WHEREAS, the South Suburban Park and Recreation District ("District"), as part of its mission statement acquires and improves land within the District boundaries to develop and provide park and recreation facilities for the public;

WHEREAS, Arapahoe County Open Spaces provides funding for such projects through distribution of its Open Space Grant monies;

WHEREAS, the District provides park and recreation services to the residents of the cities of Bow Mar, Centennial, Columbine Valley, Littleton, Lone Tree, and Sheridan and portions of Arapahoe, Douglas and Jefferson Counties;

WHEREAS, the Mary Carter Greenway East Trail Bridges are outdoor trail facilities open to the public;

WHEREAS, the District will request \$97,500.00 for the Mary Carter Greenway East Trail Bridges Replacement Construction from Arapahoe County Open Spaces to update and upgrade the park's amenities for the safety, comfort, and enjoyment of all users.

NOW, THEREFORE, BE IT RESOLVED by the Board of Directors of the South Suburban Park and Recreation District as follows:

1. The Board of Directors of the District strongly supports the grant application for the Mary Carter Greenway East Trail Bridges Replacement Construction
2. The Board of Directors of the District has appropriated \$97,500.00 of the overall project cost in matching cash funds for said Arapahoe County Open Spaces Grant and authorizes the expenditure of funds necessary to meet the terms and obligations of the awarded grant.
3. The District commits to completing the Mary Carter Greenway East Trail Bridges Replacement Construction if the grant is awarded.
4. The project site is managed by South Suburban Park and Recreation District.
5. The South Suburban Park and Recreation District will continue to maintain the Mary Carter Greenway East Trail Bridges in a high-quality condition and will appropriate funds for maintenance in its annual budget.

Resolution # 2025-22

6. If the grant is awarded, the South Suburban Park and Recreation District Board of Directors hereby authorizes the Executive Director to sign the grant agreement with Arapahoe County.
7. This resolution is in full force and effect from and after its passage and approval.

PASSED, APPROVED, AND ADOPTED this 13th day of August, 2025
by the Board of Directors of the South Suburban Park and Recreation
District, by a vote of 5 for and 0 against.

South Suburban Park and Recreation
District, by:

Signed by:

Pam Eller

D99A2D1DAFD6400
Pam Eller, Chair

ATTEST:

Signed by:

Luke Lorenz

E6B4162007F844D
Luke Lorenz, Secretary



Public Works Department

Date: July 21, 2025

RE: South Platte Park East Trail Bridges

To: Open Space and Trails Advisory Board:

I am writing to express my support for South Suburban South Platte Park East Trail Bridge project. This initiative will replace and improve the trail bridge crossing within South Platte Park, enhancing safety, accessibility, and environmental resilience in one of the region's most valued open spaces.

This bridge is essential for maintaining continuous trail access through the park and connecting users to the Mary Carter Greenway and surrounding neighborhoods. Replacing this ageing structure will benefit a wide range of users, including families, seniors, individuals with disabilities, and nature enthusiasts.

As the Director of Public Works with the City of Littleton, I believe this project will strengthen our regional trail system and support long-term stewardship of the South Platte River corridor.

I fully support South Suburban efforts to secure funding for this important project and encourage its approval.

Sincerely,

DocuSigned by:

Brent Soderlin

A0919548B58C4D2...

Brent Soderlin

Director of Public Works and Utilities



South Metro
LAND CONSERVANCY

July 29, 2025

RE: South Platte Park East Trail Bridges

Dear Members of the Open Space and Trails Advisory Board:

South Metro Land Conservancy would like to express its support for funding the East Trail Bridges project in South Platte Park.

South Metro Land Conservancy (SMLC) is a 501 (c)(3) nonprofit organization founded in 1993. Our mission is to increase understanding and appreciation of the profound importance of open spaces, natural areas, parks and trails in the lives of people of all ages.

In keeping with that mission, SMLC strongly supports the East Bridges project because it will enhance safety and accessibility and provide connectivity for a wide range of users including families, seniors and individuals with disabilities. In addition, the bridges provide opportunities for people to access a more remote part of South Platte Park and to connect with nature.

SMLC believes this project will have a lasting positive impact on our community and aligns with regional goals for open space access as well as the goals of South Platte Park to provide people with opportunities close to home to enjoy nature.

We fully support South Suburban Parks and Recreation's efforts to secure funding for this important project and encourage its approval.

Sincerely,

Patricia Cronenberger

Patricia Cronenberger, President



July 23, 2025

RE: South Platte Park East Trail Bridges

TO: Open Space and Trails Advisory Board

Bike Jeffco fully supports the South Suburban South Platte Park East Trail Bridge project. This initiative will replace and improve the trail bridge crossing within South Platte Park – enhancing safety, accessibility and environmental resilience in one of the region’s most valued open spaces. The Mary Carter Greenway Trail is one of the most used trails in our region. In 2024, Bike Jeffco held a pop-up event at the trail and interacted with over 80 trail users: cyclists, pedestrians, dog walkers. We asked what the trail users most liked about the trail and the answer almost universally included that this was an important connectivity between their neighborhoods and destinations.

This bridge is essential for maintaining continuous trail access through the park and connecting users to the Mary Carter Greenway and surrounding neighborhoods. Replacing this aging structure will benefit a wide range of users, including families, seniors, individuals with disabilities and nature enthusiasts. Sightlines and safety will be improved.

Bike Jeffco’s Trail Advocate Program identifies the Mary Carter Greenway as an important connector in our regional trail network. It is well maintained and offers the amenities that trail users want. It clearly provides a connection to nature that is accessible and utilized by nearby communities.

As a regional advocacy organization, Bike Jeffco believes that this project will strengthen our regional trail system and support long-term stewardship of the South Platte River corridor.

We fully support South Suburban’s efforts to secure funding for this important project and encourage its approval.

Best,

Jan Stevenson
Chair, Bike Jeffco
303-859-1295
Jstevenson@bikejeffco.org

There is no known or anticipated opposition to the Mary Carter Greenway East Trail Bridges Replacement (Construction) Project.

There are no partners for the Mary Carter Greenway East Trail Bridges Replacement (Construction) project.





Bridge 2:
deterioration of
wooden railings



Bridge 2:
deterioration of
bridge slats





Over time, Bridge 1 experienced unsustainable repairs to preserve the structural integrity of the bridge.



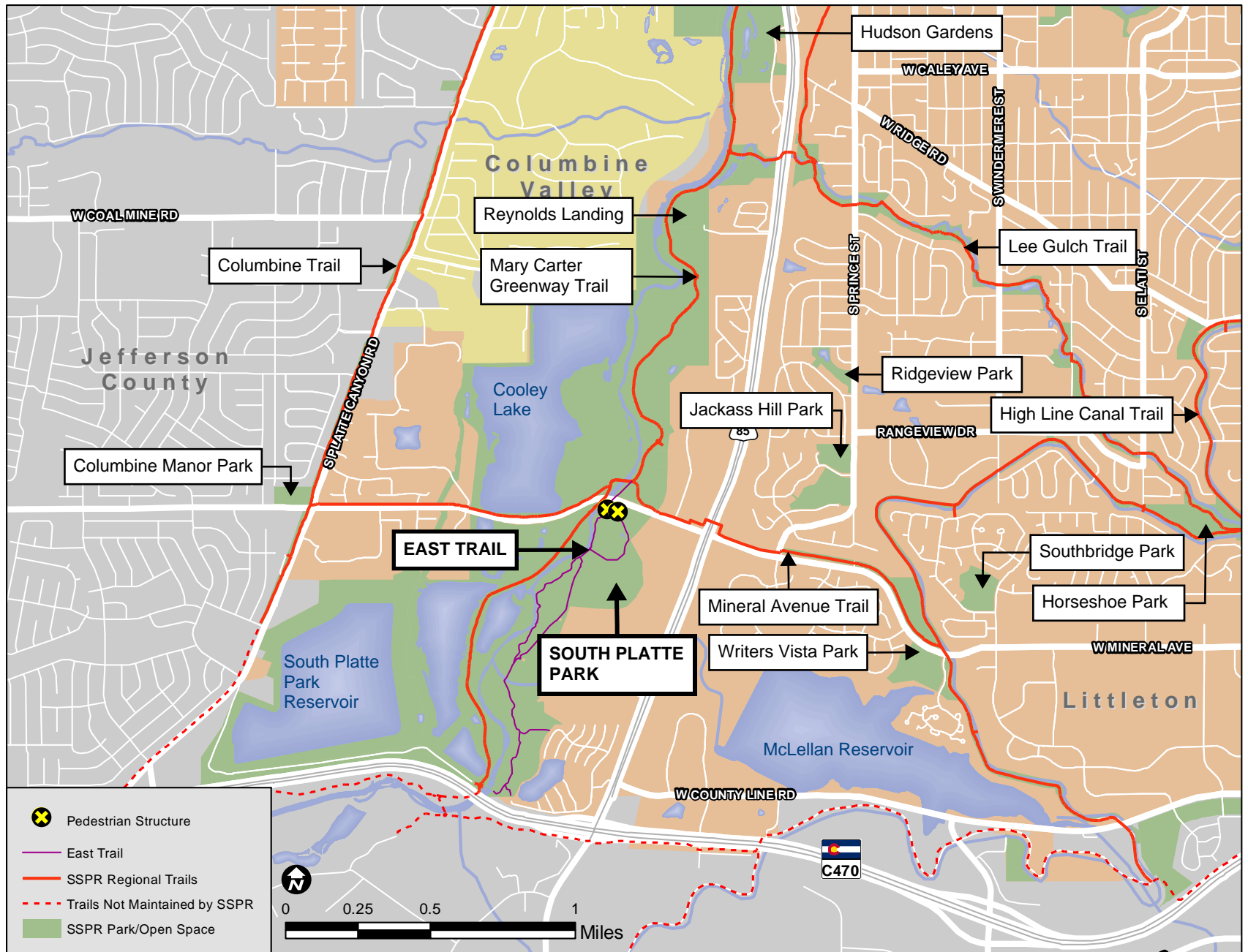
Slats on Bridge 1 were replaced with ill-fitting boards over time. A prefab structure will limit the need for these types of repairs.



EAST TRAIL BRIDGES

LITTLETON, COLORADO
AUGUST 2025

SITE MAP



SOUTH PLATTE PARK

LITTLETON, COLORADO
JULY 2025

VICINITY MAP

SPE2

Bridge Replacements

Project Description

This project proposes three existing boardwalks be replaced with similar timber boardwalk structures. The existing boardwalks are not located within the South Platte River floodplain, but cross low-lying wetland areas collecting drainage from Jackass Gulch and the properties adjacent to the park. Properly designed timber pedestrian railings are also recommended along each side of the boardwalk for fall protection from the wetlands; overlook areas along the boardwalk lengths can also be considered for wildlife observation in the wetlands.

Conceptual Design

Design for ADA access is recommended, with a minimum 8 foot travel width across the structure to accommodate both pedestrians and maintenance vehicles.

There is great flexibility in boardwalk designs, with several capable contractors available to complete the work, ensuring competitive bidding and a relatively economical solution.

Agencies Involved

- SSPRD
- City of Littleton
- MHFD

Considerations

- Current alignments can be reused to avoid significant wetland impacts and regrading.



Cost Estimate

\$250,000

Based on 2022 costs



Mary Carter Greenway Trail Study

Appendix D:
Environmental Assessment



Introduction

Felsburg Holt and Ullevig (FHU), acting on behalf of the South Suburban Park and Recreation District, performed an environmental overview in the environmental study area. This report describes the existing environmental conditions within the study area, including noxious weeds, wetlands, migratory birds, special status species (including threatened and endangered, proposed, candidate, and state concern), and vegetation resources. **Appendix A** includes a photo log of the existing conditions within the environmental study area at the time of the field surveys.

Project Location

The project is located along the Mary Carter Greenway from approximately 600 feet south of C-470 to approximately 1,200 feet past West Dartmouth Ave. A map of the study area can be found in **Figure 1**. The project lies in the U.S. Geological Survey (USGS) 7.5-minute Fort Logan and Littleton Quadrangle in Sections 31, 32, 29, 20, 17, 8, 9, & 4 in Township 5 South, Range 68 West, in the sixth principal meridian. The approximate coordinates of the center of the project are latitude 39.624458° and longitude -105.018895° (WGS 84 datum).

Environmental Study Area

The environmental study area consists of an 8.15-miles section of trail and a 20-foot buffer around the trail and is approximately 62 acres. The project was broken up into 6 sections.

Existing Conditions

This section describes the environmental resources of the study area. Information is based on a desktop analysis and site conditions during a field survey conducted on June 20, 2023. Photos from the site visit can be found in **Appendix A**.

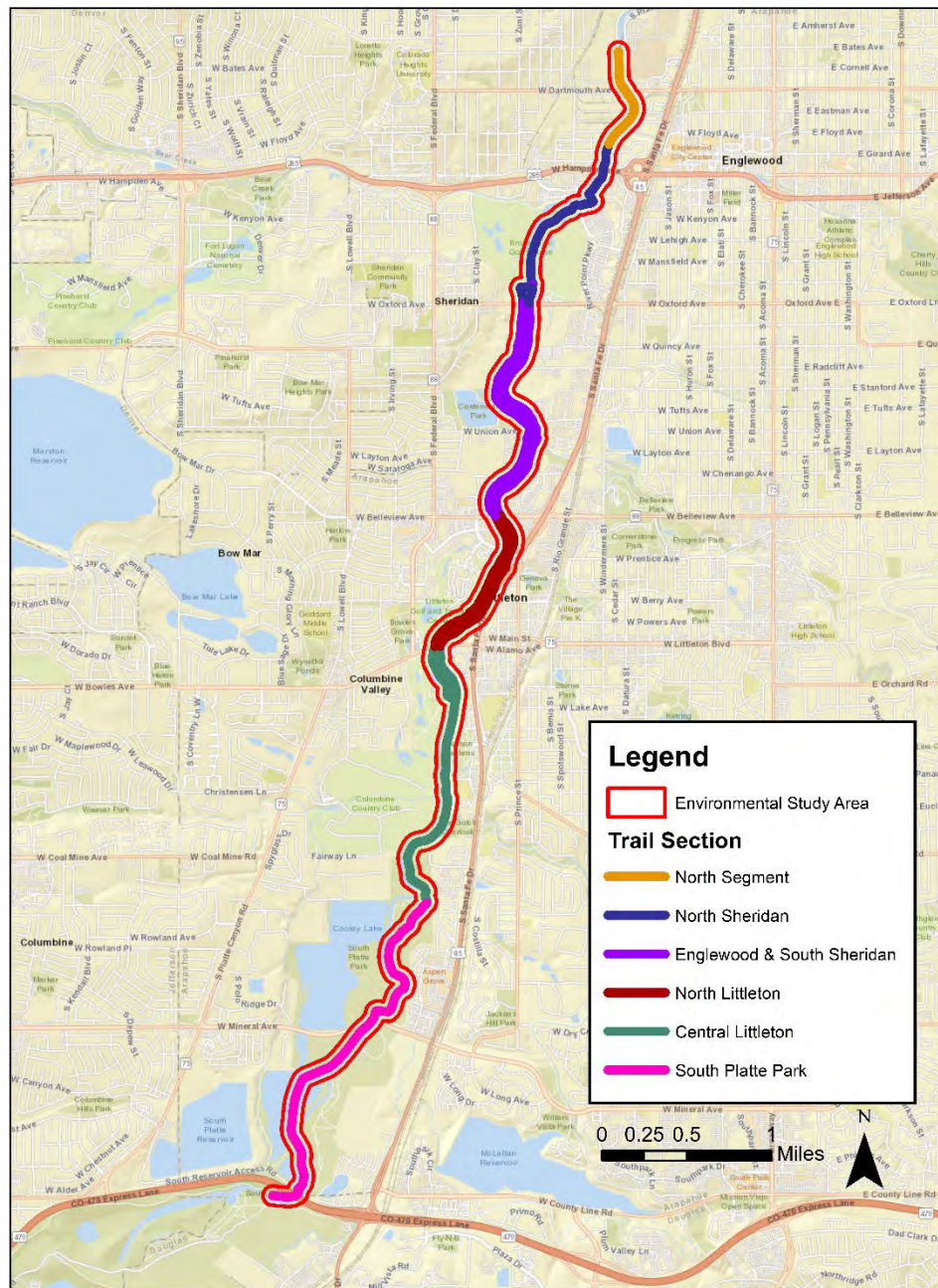
Vegetation and Noxious Weeds

Vegetation in the study area consists of species including but not limited to willows (*Salix exigua*), cottonwoods (*Populus deltoides*), showy milkweed (*Asclepias speciosa*), and rabbitbrush (*Ericameria nauseosa*), as well as several noxious weed species. The Colorado Noxious Weed Act requires the control of 79 plant species designated as "noxious weeds." According to the Colorado Department of Agriculture (CDA), noxious weeds are plants that replace native vegetation, reduce agricultural productivity, and cause wind and water erosion (CDA, 2022). Species found in the study area and their CDA listing designation can be found in **Table 1**. Only List A weeds are regularly treated by South Suburban.

Table 1. Noxious Weeds Observed in Environmental Study Area

Common Name	Scientific Name	CDA: List A, B, or C
Russian olive	<i>Elaeagnus angustifolia</i>	List B
Leafy spurge	<i>Euphorbia esula</i>	List B
White top (hoary crest)	<i>Lepidium draba</i>	List B
Field bindweed	<i>Convolvulus arvensis</i>	List C
Downy brome	<i>Bromus tectorum</i>	List C

Figure I. Environmental Study Area



Wetlands and Waters of the United States

In 1972, the U.S. Congress passed the Clean Water Act (CWA) to protect the quality of waters of the U.S. (WUS), including adjacent wetlands. Section 404 of the CWA defines WUS as all traditional navigable waters and their tributaries, all interstate waters and their tributaries, all wetlands adjacent to these waters, and all impoundments of these waters. The U.S. Army Corps of Engineers (USACE) Regulatory Program administers, and the USEPA enforces Section 404 of the CWA.

The study area falls within the Upper South Platte Watershed part of the South Platte River Basin. This watershed has an 8-digit Hydrologic Unit Code of 10190002, as identified by the U.S. Geological Survey's National Hydrographic Dataset (NHD). The South Platte River runs adjacent to the Mary Carter Greenway throughout the study area and has several lakes and tributaries that empty into the South Platte River. There are assumed riparian and wetland areas within and adjacent to the study area. Once designs are completed, a wetland delineation survey will need to be performed to determine the accurate boundary of wetlands and streams that may be impacted by the project. A desktop delineation was performed using National Wetland Inventory (NWI) data.

Once final impacts are determined, and depending on the extent of wetland impacts, this project will likely require a Section 404 Permit for construction. If necessary, the project team will coordinate with the USACE to identify mitigation strategies related to wetland impacts. These strategies may include onsite mitigation, off-site mitigation, purchase of wetland bank credits, or the use of a separate strategy approved by the USACE. Once design progresses to a point where impacts can be calculated, FHU staff will analyze the total quantities of wetland temporary and permanent impacts. As the design progresses, these impacts may be refined to minimize and avoid wetlands to the extent possible. Any Section 404 permits will be acquired from the USACE prior to construction activities occurring.

Migratory Birds

The Migratory Bird Treaty Act (MBTA) of 1918 provides protection for birds classified as migratory birds by the U.S. Fish and Wildlife Service (USFWS). In Colorado, most birds, except for the European Starling (*Sturnus vulgaris*), House Sparrow (*Passer domesticus*), Rock Dove (*Columbia livia*) (Pigeon), and common grouse/pheasant species (Order *Galliformes*), are protected under the MBTA. The Migratory Bird Permit memorandum issued in April 2003 stipulates no prohibition against destroying inactive nests. Additionally, any disturbance to these nesting areas must follow the stipulations outlined in the MBTA. Specific protection for Bald and Golden Eagles is authorized under the Eagle Protection Act (16 United States Code 668), which provides additional protection to these species from intentional or unintentional harmful conduct. The study area contains suitable habitat that may provide opportunities for forage, roosts, and nesting to migrating birds, such as raptors and passerines.

FHU environmental scientists completed an onsite nest survey on June 20, 2023, and no active nests were observed within the study area or vicinity; a red-tailed hawk (*Buteo jamaicensis*) was observed during the June 20, 2023 field visit. In addition, several nests are mapped in the Colorado Parks and Wildlife (CPW) Raptor Nest GIS data as being within a half mile of the southern end of the project area.

Additional migratory bird and raptor nest surveys will be required if construction of the project occurs between April 1 and August 31 and should be conducted at least one week before construction activities begin. Construction activities around and near migratory bird nests should be based on CDOT's Project Special Specification 240, which follows CDOT's Standard Specifications for Road and

Bridge Construction. A qualified wildlife biologist will conduct a survey for nesting burrowing owls at any prairie dog colonies that will be disturbed if construction occurs within the typical nesting season for burrowing owls (March 15 to October 31). If raptor nests are located within or adjacent to the study area, then coordination with CPW and USFWS must occur to identify potential impacts and mitigation. Mitigation would include using the CPW Recommended Buffer Zones and Seasonal Restrictions for Nesting Raptors (CPW, 2020)

Special Status Species

This section describes the special status species habitat and conditions of the study area. Information is based on site conditions during the field surveys conducted on June 20, 2023.

A review of the USFWS Information, Planning, and Conservation (IPaC) System website resulted in a list of nine federally threatened or endangered species with the potential to be impacted by activities in the study area. These species include: gray wolf (*Canis lupus*), piping plover (*Charadrius melodus*) whooping crane (*Grus americana*), greenback cutthroat trout (*Oncorhynchus clarkia stomias*), pallid sturgeon (*Scaphirhynchus albus*), monarch butterfly (*Danaus plexippus*), Ute ladies'-tresses (*Spiranthes diluvialis*) and western prairie fringed orchid (*Platanthera praeclara*) (USFWS, 2023).

Several species of state concern also have possible habitat in the project area including bald eagles (*Haliaeetus leucoccephalus*), burrowing owl (*Athene cunicularia*), Iowa darter (*Etheostoma exile*), black-tailed prairie dog (*Cynomys ludovicianus*), Townsend's big-eared bat (*Corynorhinus townsendii pallescens*) and the common garter snake (*Thamnophis sirtalis*).

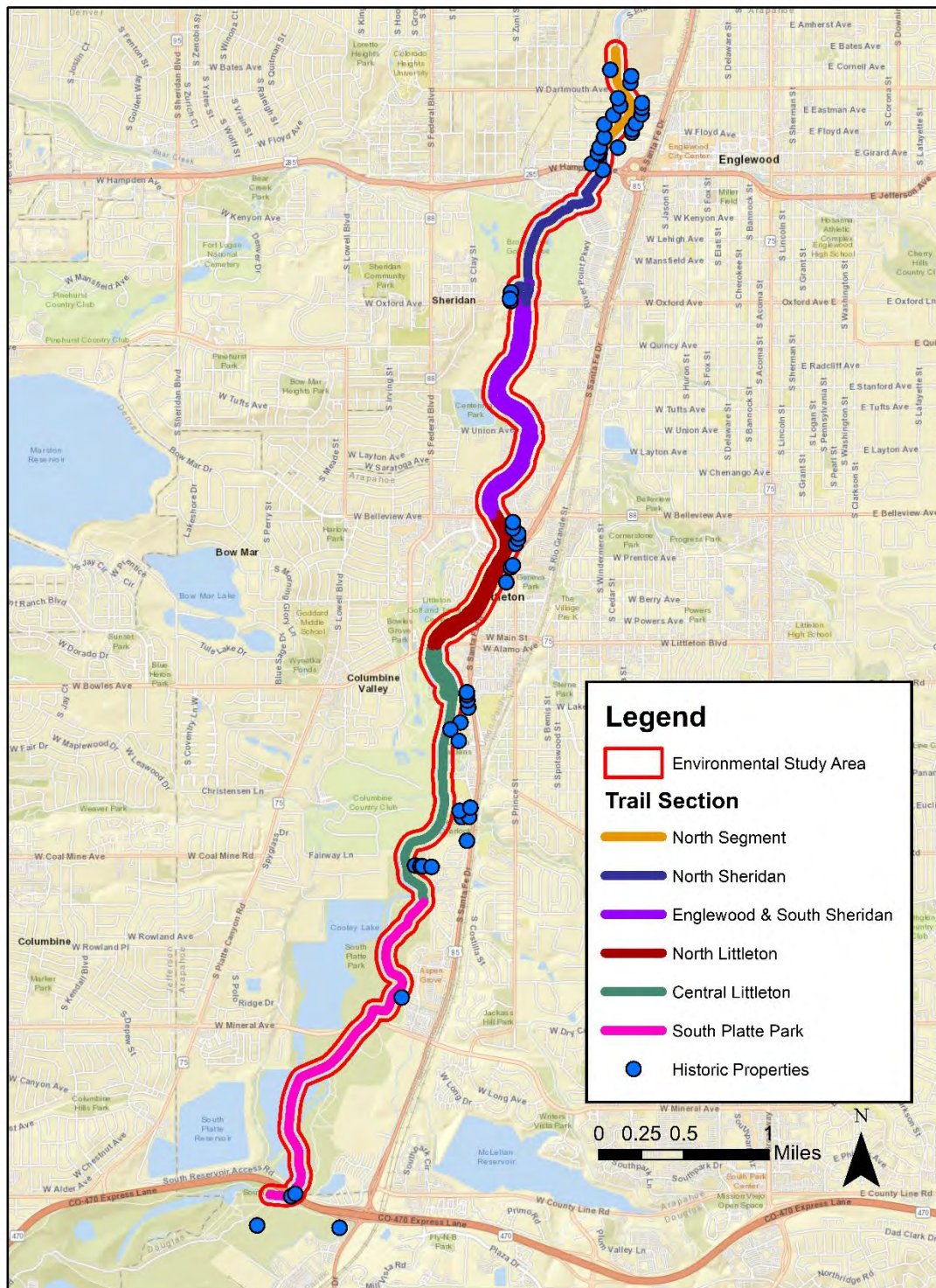
Species listed above that are most likely to be impacted include the Preble's meadow jumping mouse (PMJM), Townsend's big eared bat and the common garter snake. The PMJM currently has a confirmed population approximately 0.85 miles from the southern portion the South Platte Park section. PMJM prefer relatively undisturbed grassland communities with a nearby water source. Due to the development surrounding the trail it is unlikely that the PMJM would use other trail sections besides the South Platte Park. Garter snakes inhabit a variety of habitats but they prefer areas close to water with thick vegetation. It is likely that the garter snake will be found throughout all the trail sections. Townsen's big eared bat roost in the cavities of trees and rocks as well as under tunnels. There are several large trees and tunnels along the entire trail that could be suitable habitat for the Townsend's big eared bat.

Other species listed by IPaC and CPW are less likely to be affected. The cutthroat trout, pallid sturgeon, and whooping crane are affected by downstream deletions to the South Platte River which are not expected with this project. Gray wolves are not present in or near the study area and there is no predator management plan in place therefore this project will have no effect on the gray wolf. Pipping plovers migrate through the country but tend to utilize salt marches and lakes witch are not present in the study area making impacts to the species unlikely. Ute-ladies tresses and the western prairie fringed orchid both prefer relatively undisturbed wet meadow and grassland areas, due to the habitat quality present in the study area it is unlikely for these species to be present or impacted. No black-tailed prairie dog colonies were identified during the field survey. If they are found to be present a burrowing owl survey must be conducted prior to construction taking place, removing black tailed prairie dog colonies will remove the potential habitat for burrowing owls.

Historic Properties

Under Section 106 of the National Historic Preservation Act projects with a federal nexus are required to identify and evaluate the significance of historic properties before work is commenced. Historic properties are defined as properties over 50 years old and or that have an association with significant events or people, that have technological, engineering, or architectural significance and retains physical integrity, or that can demonstrate or communicate the qualities of their significance. **Figure 2** shows the location of historical properties near the environmental study area.

Figure 2. Historic Properties Within and Adjacent to the Environmental Study Area



Hazardous Materials

This section discusses the potential for soil and groundwater contamination to be encountered in the project area. Areas of contaminated soil and groundwater must be identified so they can be avoided, if reasonably possible. Encountering soil and groundwater contamination during construction without prior knowledge may affect a project in terms of worker safety, cost, schedule, and agency and public relations. In addition, it is important to protect the purchasing agency from liability for existing contamination that they may unknowingly acquire. Therefore, assessment and investigation of contamination concerns in the project area are an integral part of the project planning process.

The potential presence of soil and groundwater contamination will be considered during the screening of alternatives and identification of the Preferred Alternative, to help in alternative selection and will be further considered during final design and right-of-way acquisition.

Hazardous materials include substances or materials that have been determined by the Environmental Protection Agency (EPA) to be capable of posing an unreasonable risk to health, safety, or property. Hazardous materials may exist within the study area at facilities that generate, store, or dispose of these substances, or at locations of past releases of these substances. Examples of hazardous materials include asbestos, lead-based paint, heavy metals, dry cleaning solvents, and petroleum hydrocarbons (e.g., gasoline and diesel fuel), all of which could be harmful to human health and the environment.

Sites that are historically known to have released regulated materials into the ground (i.e., soil), groundwater, or surface water or facilities that likely use petroleum products and/or hazardous materials daily are typically automotive fueling stations, automotive sales/service stations, dry cleaning facilities and as maintenance facilities, are considered as properties with a high contamination potential. Often railroad right of ways contain surficial impacts from minor spills or oil leaks, and the result can be ballast that is impacted by petroleum hydrocarbons. Additionally, any development along the South Platte River has the potential to encounter landfill materials from historic in-filling along the banks of the river over time.

FHU reviewed the GIS maps managed by the Colorado Department of Labor and Employment, Oil and Public Safety and the Colorado Department of Public Health and Environment, Hazardous Materials and Waste Management Division within 300 feet of the Mary Carter Greenway trail corridor. Information reviewed included the following:

- Sites with reported hazardous material releases such as Superfund (National Priorities List (NPL), Resource Conservation and Recovery Act (RCRA), Brownfields, Voluntary Clean Up (VCUP), Uranium Mine Tailings, Environmental Covenant, and solid waste disposal facility (SWF) sites
- Facilities with active/closed leaking underground storage tanks (LUSTs)
- The trail corridor travels through several light industrial areas which have a high contamination potential.

According to the records reviewed, the trail corridor had the following sites with a potential hazardous material concern:

- 9 RCRA sites
- 7 SWF sites
- 6 VCUP sites

- I LUST site
- I Environmental Covenant

Hazardous materials are most likely to be encountered during ground-disturbing activities near sites with recognized or potential environmental conditions. LUST sites that are closed still have the potential to have residual contamination present and should be investigated more thoroughly during any future project.

Section Summary

The project area has been split into six sections. These sections contain different environmental resources and environmental justice concerns as they are home to different populations. In order to ensure communities are not being disproportionately affected the EPA EJ screener (EPA, 2023) was consulted. Also addressed are the different potential habitat concerns that are unique to the trail sections.

<i>Trail Section</i>	<i>Environmental Justice Percentile</i>	<i>Habitat Present</i>
North Section	-90-95% diesel particulate matter, -90-95% traffic proximity, -90-95% superfund proximity, -90-95% RMP facility proximity, -90-95% hazardous waste -90-95% wastewater discharge -80-90% underground storage tanks	No unique biological concerns in this section
North Sheridan	80-90% of traffic proximity	No unique biological concerns in this section
Englewood & South Sheridan	No EJ concerns	No unique biological concerns in this section
North Littleton	No EJ concerns	No unique biological concerns in this section
Central Littleton	80-90% of traffic proximity.	No unique biological concerns in this section
South Platte Park	No EJ concerns	-Elk habitat - mountain lion habitat - raptor nests reported within half a mile of the of the trail -PMJM potential habitat in the area with confirmed population 0.85 miles south of the trail

Appendix A – Site Photos



Photo 1 – June 20, 2023
South Platte River along trail with willows and noxious weeds north of Bowles Ave.



Photo 2 – June 20, 2023
Red-tailed hawk seen along the Mary Carter Greenway just north of the Carson Nature Center



Photo 3 – June 20, 2023
Bridge crossing South Platte River just south of US 285.



Photo 4 – June 20, 2023
South Platte River from the Mary Carter Greenway with willows along the banks.



Photo 5 – June 20, 2023



Photo 6 – June 20, 2023

Pond with noxious weeds next to Mary Carter Greenway just north of Reynolds Landing.	Pond next to Mary Carter Greenway near the southern extent of the environmental study area.
--	---

References

Colorado Department of Agriculture (CDA). 2022. Noxious Weeds. Accessed July 2023. Available at: <https://www.colorado.gov/pacific/agconservation/noxiousweeds>.

Colorado Parks and Wildlife (CPW). 2020. Recommended Buffer Zones and Seasonal Restrictions for Colorado Raptors. Available at: <https://cpw.state.co.us/Documents/WildlifeSpecies/LivingWithWildlife/Raptor-Buffer-Guidelines.pdf>

CPW. 2023. State Threatened and Endangered and Species of Concern. Available at: <https://cpw.state.co.us/learn/Pages/SpeciesProfiles.aspx>

EPA. 2023. EJScreen: Environmental Justice Screening and Mapping Tool. Available at: <https://www.epa.gov/ejscreen>

USFWS. 2023. Information, Planning, and Conservation (IPaC). <https://ecos.fws.gov/ipac/>.