



ARAPAHOE COUNTY



Financial Update

Breanna Paderewski, Director of Finance and Administration

FY25 Quarterly Financials

Funding Update

- Year over year indirect compression due to flat or reduced funding and continued increases in expenses.
 - ~45 active grants, 27 annual renewal/ongoing grants.
 - 23 were flat or reduced funding.
 - Elimination of TANF, Adult Nurse Liaison Programs and Reduction of the Child Nurse Liaison Programs – Resulting in a reduction of 8.5 FTE and \$1.2 Million.
 - Total lost funding to-date: \$1.8 Million.
 - Ongoing and uncertain funding cuts from state and federal sources.
 - EBC Presentation Update
-



2nd Quarter High Level Summary

Revenue

- Collected 71.14% of Budget
- Total Revenue \$17.8m
- \$7.4m in County Contribution
- \$8.7m in Grant Revenue

Expense

- Expensed 49.3% of Budget
 - Total Expenses \$12.3m
 - Salary and Benefits Total \$10.3m, 83.1% of expenses
-

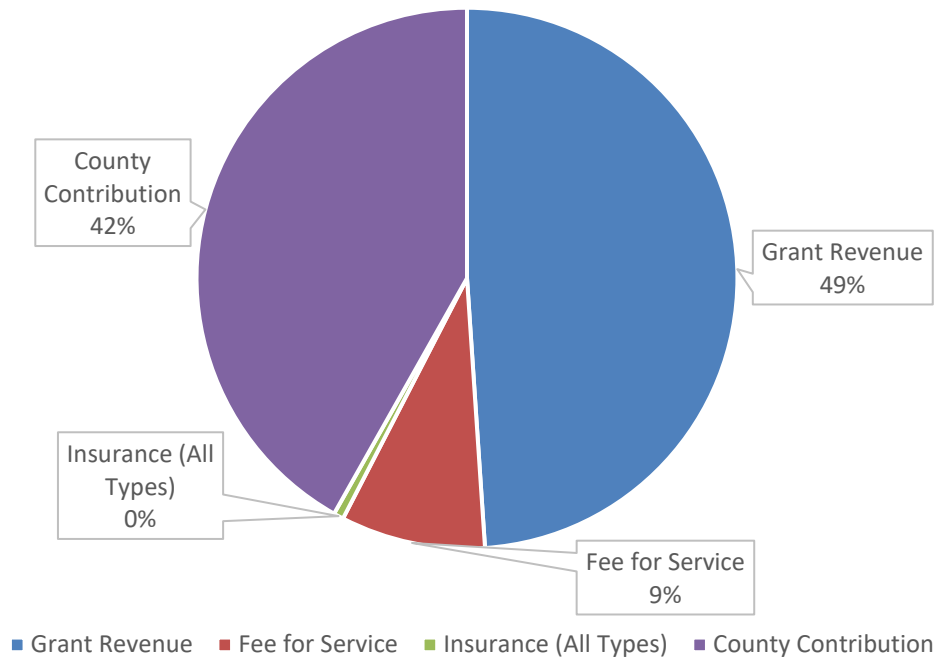
2Q25 Financial Summary

Commitment Item	FY 2025 Budget	2Q25 YTD Actuals	Budget % YTD (50% thru FY)
Revenue			
Fee for Service	\$ (1,961,040.00)	\$ (1,539,106.00)	78.48%
Medicaid, Insurance Reimbursement	\$ (362,204.00)	\$ (106,435.00)	29.39%
Federal Grant	\$ (7,607,428.00)	\$ (4,360,935.00)	57.32%
State Grant	\$ (6,804,215.00)	\$ (3,971,475.00)	58.37%
Other Grant	\$ (443,474.00)	\$ (381,374.00)	86.00%
County General Funds	\$ (7,764,425.00)	\$ (7,446,548.00)	95.91%
Investment Returns	\$ (85,000.00)	\$ -	0.00%
Total Revenue	\$ (25,027,786.00)	\$ (17,805,873.00)	71.14%
Expenditures			
Salaries	\$ 17,064,930.00	\$ 8,089,153.00	47.40%
Employee Benefits	\$ 4,698,957.00	\$ 2,161,752.00	46.00%
Supplies	\$ 738,884.00	\$ 412,792.00	55.87%
Services and Other	\$ 2,033,850.00	\$ 1,439,898.00	70.80%
Community Programs	\$ 62,482.00	\$ 33,681.00	53.91%

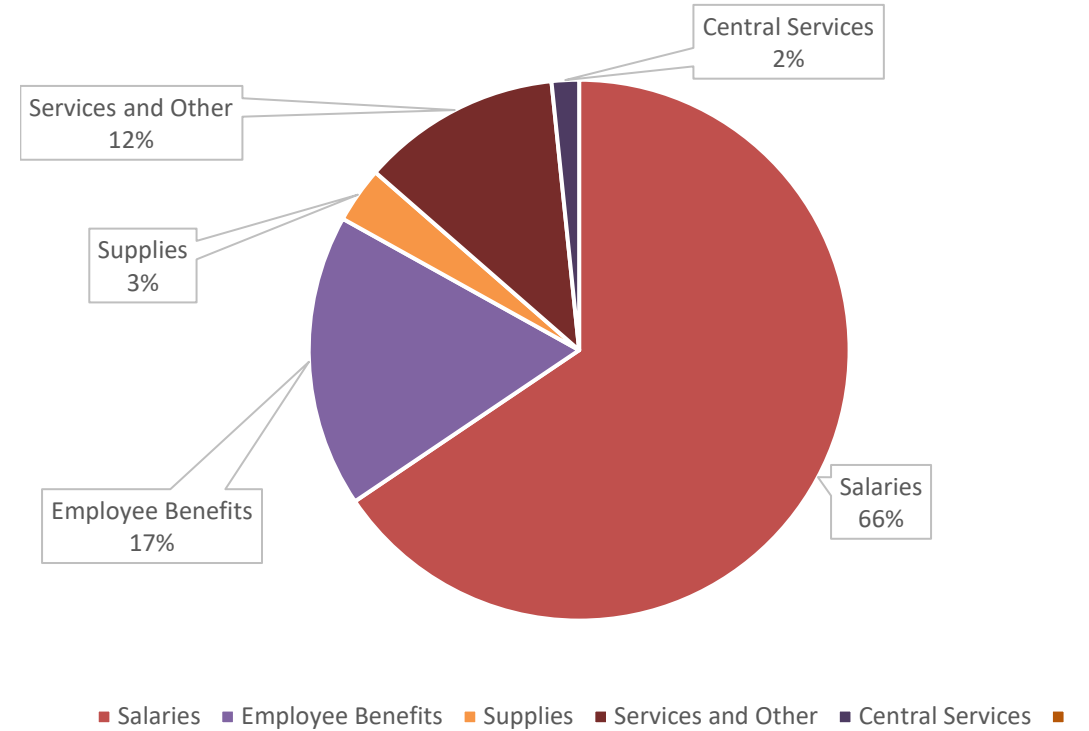


2Q25 Financial Summary

2Q25 Revenue



2Q25 Expenses



Questions