



Shawn Davis, Chair  
Bebe Kleinman, Vice Chair  
Kristine Burrows  
Dr. Mark Levine  
Terrence Walker  
Michelle Weinraub  
Mark Mcmillan

# Arapahoe County

## Arapahoe County Board of Health

### Agenda

---

Wednesday, August 20, 2025  
2:00 PM

Arapahoe Board Room

---

#### Informal Session

*The Board of Health agenda and materials can be viewed online at  
<https://arapahoe.legistar.com/Calendar>*

#### 1. EXECUTIVE SESSION AND COUNTY ATTORNEY LEGAL MEETING

As required by law, specific agenda topics will be announced in open meeting prior to the commencement of the closed and confidential portion of this session. C.R.S. § 24-6-402(4)

#### 2. STUDY SESSION

The purpose of this session is informal relationship building among Board of Health directors and ACPH staff. Topics discussed during this session are only conversational and no decisions will be made at this time. Topics during this session may include:

##### 2.a Director's Mid-Year Review

##### 2.b Measles Update

Measles Update

[25-464](#)

**Attachments:** [1. BOH\\_ISS Measles Response Presentation 08202025](#)

Arapahoe County is committed to making its public meetings accessible to persons with all abilities. Please contact the Board of Health Liaison ([hbanks@arapahoegov.com](mailto:hbanks@arapahoegov.com)) at least three (3) days prior to a meeting, should you require special accommodations.



# Arapahoe County

5334 South Prince Street  
Littleton, CO 80120  
303-795-4630  
Relay Colorado 711

## Board Summary Report

---

**File #:** 25-464

**Agenda Date:** 8/20/2025

**Agenda #:**

---



**ARAPAHOE COUNTY**

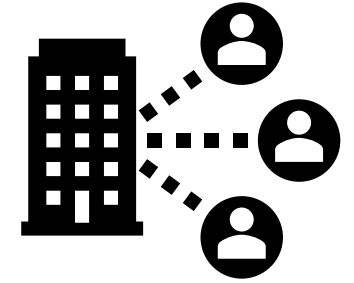


# Measles Outbreak Response

*March – June 2025*

Melissa Orozco, Communicable Disease Epidemiology Manager

Dr. Christopher Urbina, Chief Medical Officer



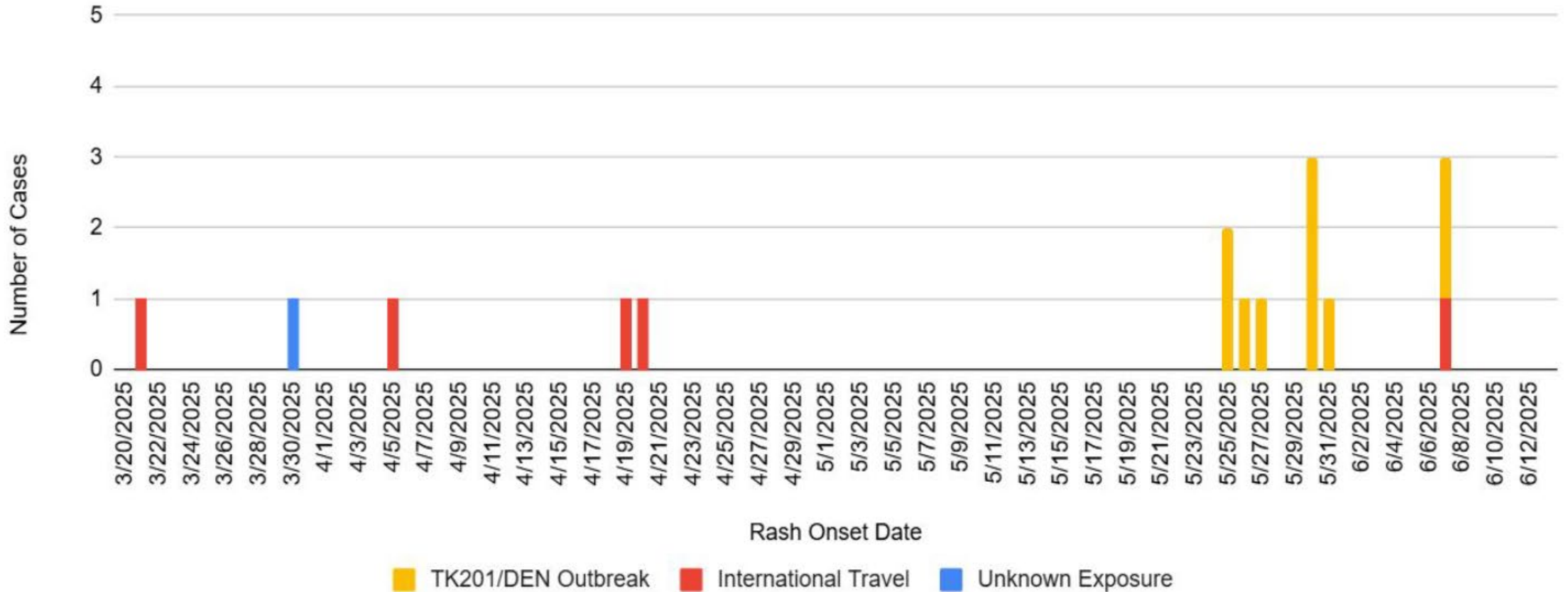
# Preparedness

- March - May 2025: Emergency Preparedness and Response (EPR) facilitated weekly meetings, workshops, and training development focused on cross-divisional staff preparedness in response to increasing cases in the U.S., Canada, and Mexico
- Objectives:
  - Developing internal process for maintaining situational awareness
  - Re-visiting lessons learned from previous incidents to ensure efficient planning and improved response operations
  - Identifying internal and external preparedness activities in advance of a single case or outbreak (defined as 3 cases) of measles
  - Ensuring equity considerations are identified and included as part of preparedness activities



# Colorado Measles Epidemiologic (Epi) Curve

2025 Colorado Reported Measles Epi Curve (N=16)





# Colorado – *By the Numbers*



**16 total cases\***

10 travel associated

4 – Turkish airline flight passengers

5 – exposed at Denver International Airport



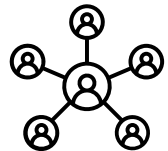
4 hospitalizations

Vaccination status

5 – fully vaccinated

4 – unvaccinated

1 – unknown vaccination



**1,330 close contacts identified\***

# Arapahoe County – *By the Numbers*



## 5 total cases

All 5 associated with Turkish airline outbreak

3 – Turkish airline flight passengers

2 – exposed at Denver International Airport



2 hospitalizations



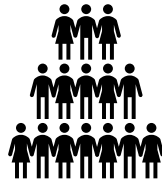
Vaccination status

3 – fully vaccinated

2 – unvaccinated



# Arapahoe County – *By the Numbers*



## **378 close contacts identified\***

13 – received MMR PEP

4 – received IG PEP

2 – received IVIG PEP

13 – issued quarantine letters

5 – IZ home visits for testing

1 – IZ home visit to administer IG PEP



## **7 – weeks activated**

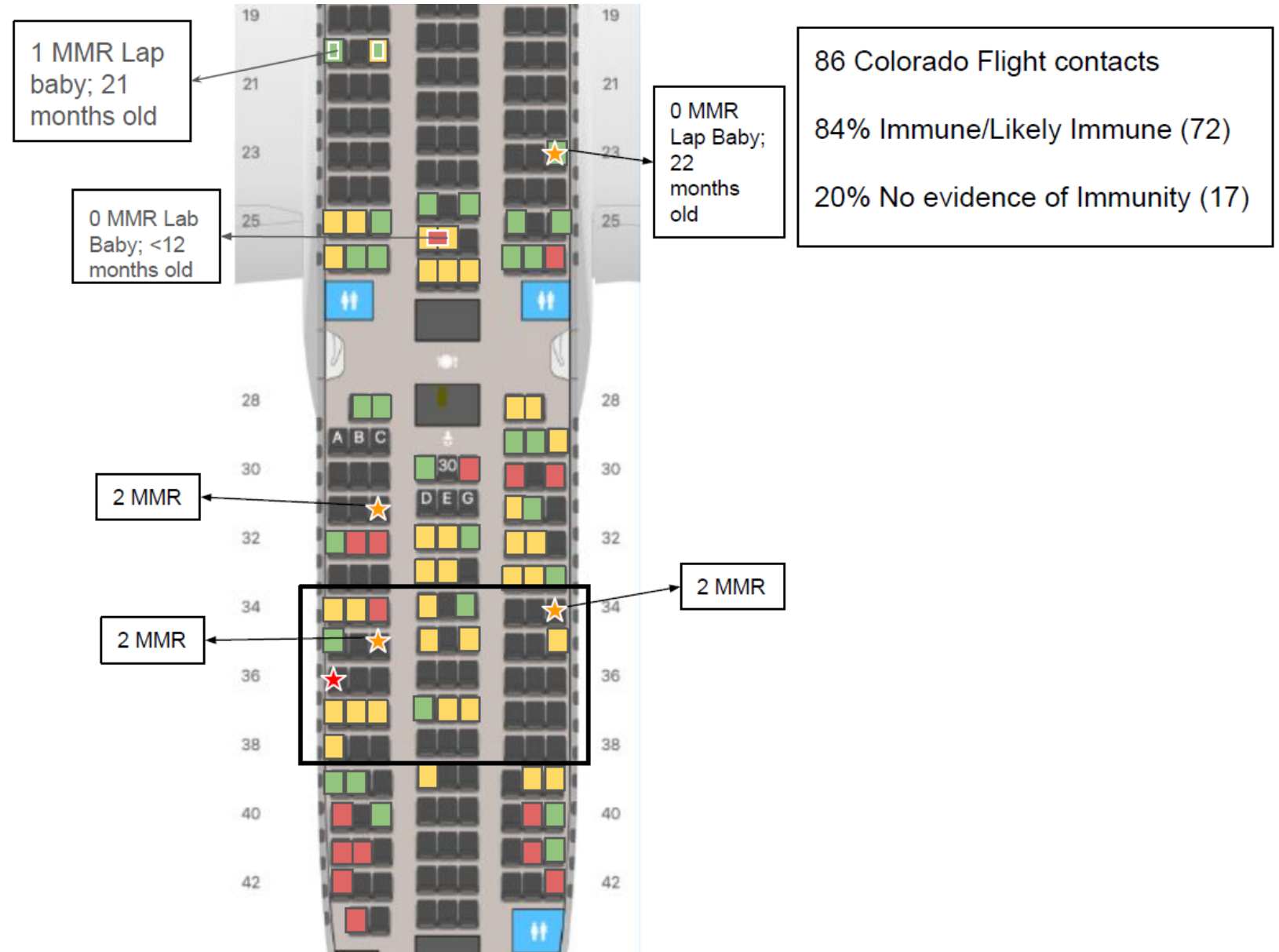
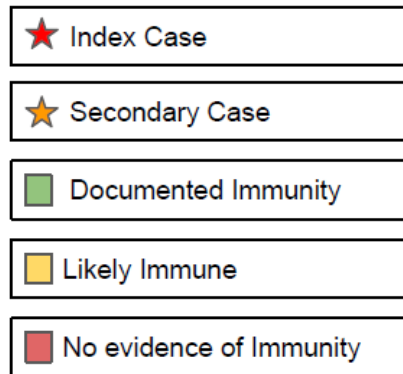


## **1,157 – staff hours worked**

*\*Represents close contacts from higher risk settings. Due to limited capacity statewide, contacts from lower risk community settings received a general notification about the exposure.*



# Turkish Airline Flight Mapping

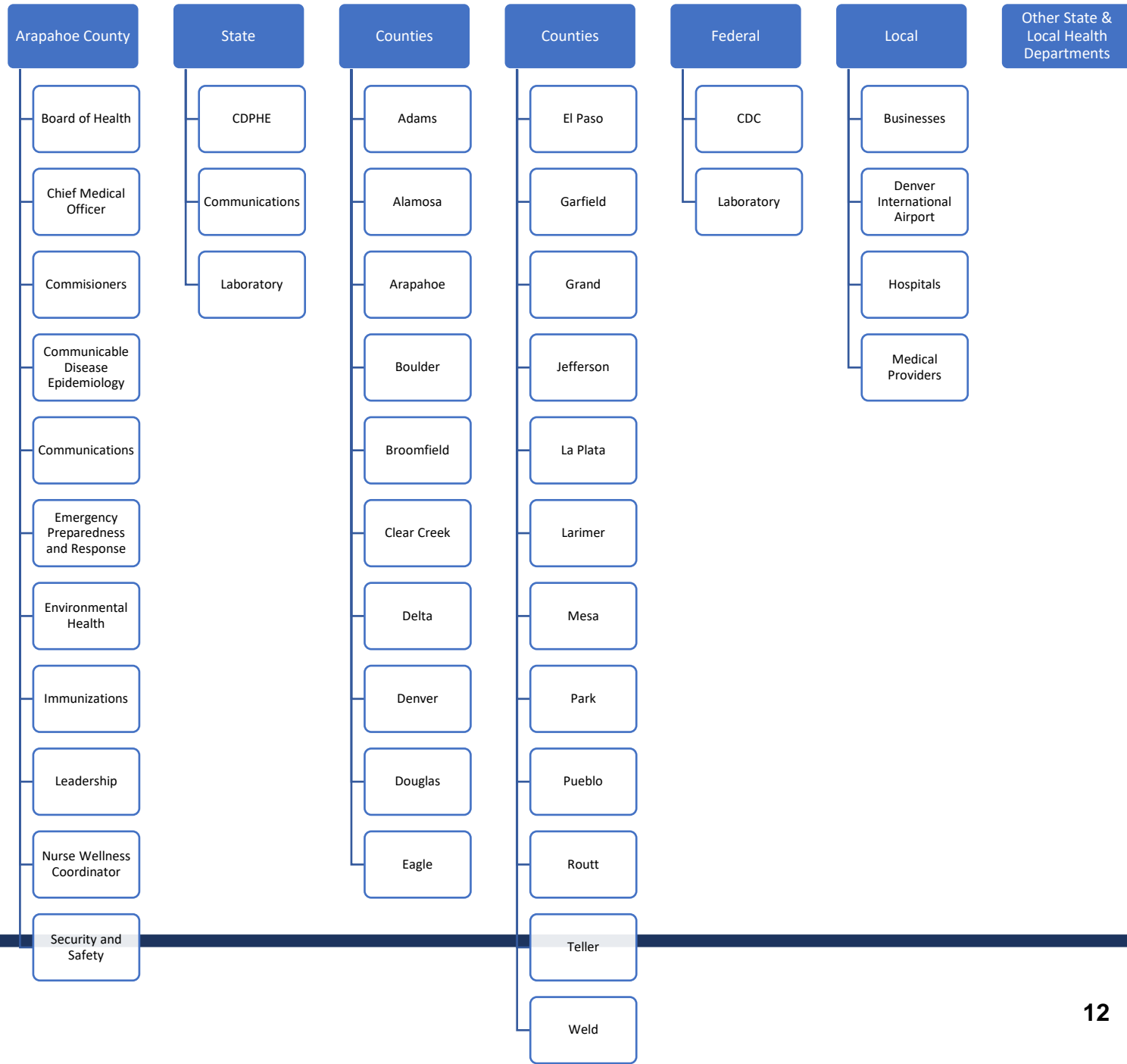


# Chief Medical Officer Takeaways

- Measles is a highly contagious disease
- The magnitude of the potential exposures is enormous
- Collaboration across county, state and health care providers essential
- Discussion about susceptibility to measles in previously vaccinated persons



Impacted  
Individuals  
& Families



# Partnerships





# Recent Developments

- Adams County cases
- Mesa County cases
- Denver International Airport flight exposure
- ACPH Activation





# Questions?