



SOUTH PLATTE
RENEW

OWNED BY LITTLETON/ENGLEWOOD

LE24-001

South Platte Renew Repeater
Installation / LE



South Platte Renew (SPR): Quick Facts

- Water Renewal Facility
 - 3rd largest facility in Colorado
 - 21 million gallons per day
 - ~300,000 people in service area
 - Jointly owned by Cities of Englewood and Littleton





SOUTH PLATTE
RENEW

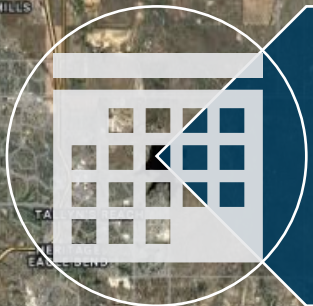
SPR Operations: Biosolid Application



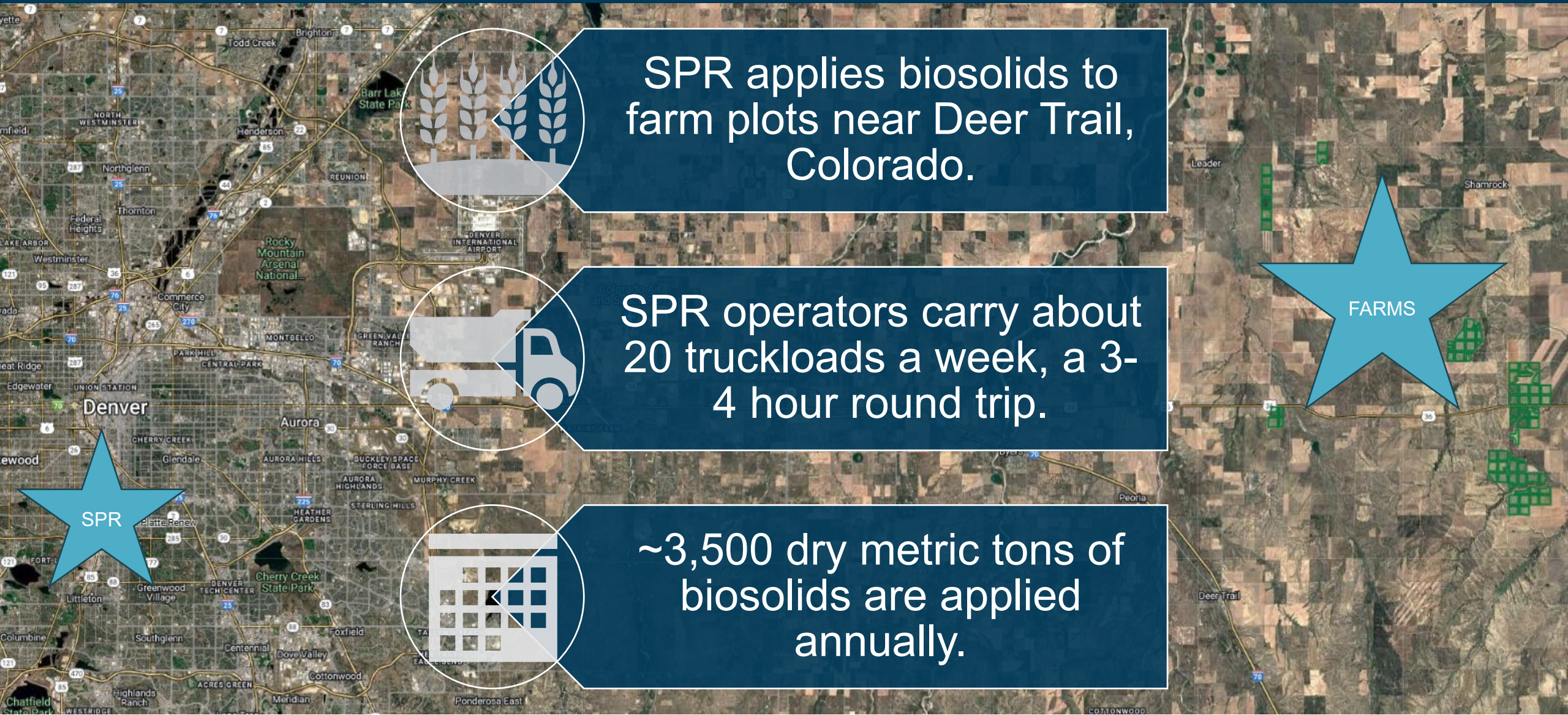
SPR applies biosolids to farm plots near Deer Trail, Colorado.



SPR operators carry about 20 truckloads a week, a 3-4 hour round trip.



~3,500 dry metric tons of biosolids are applied annually.





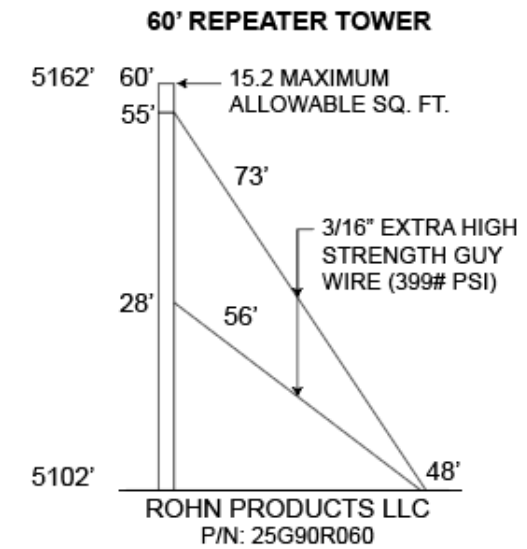
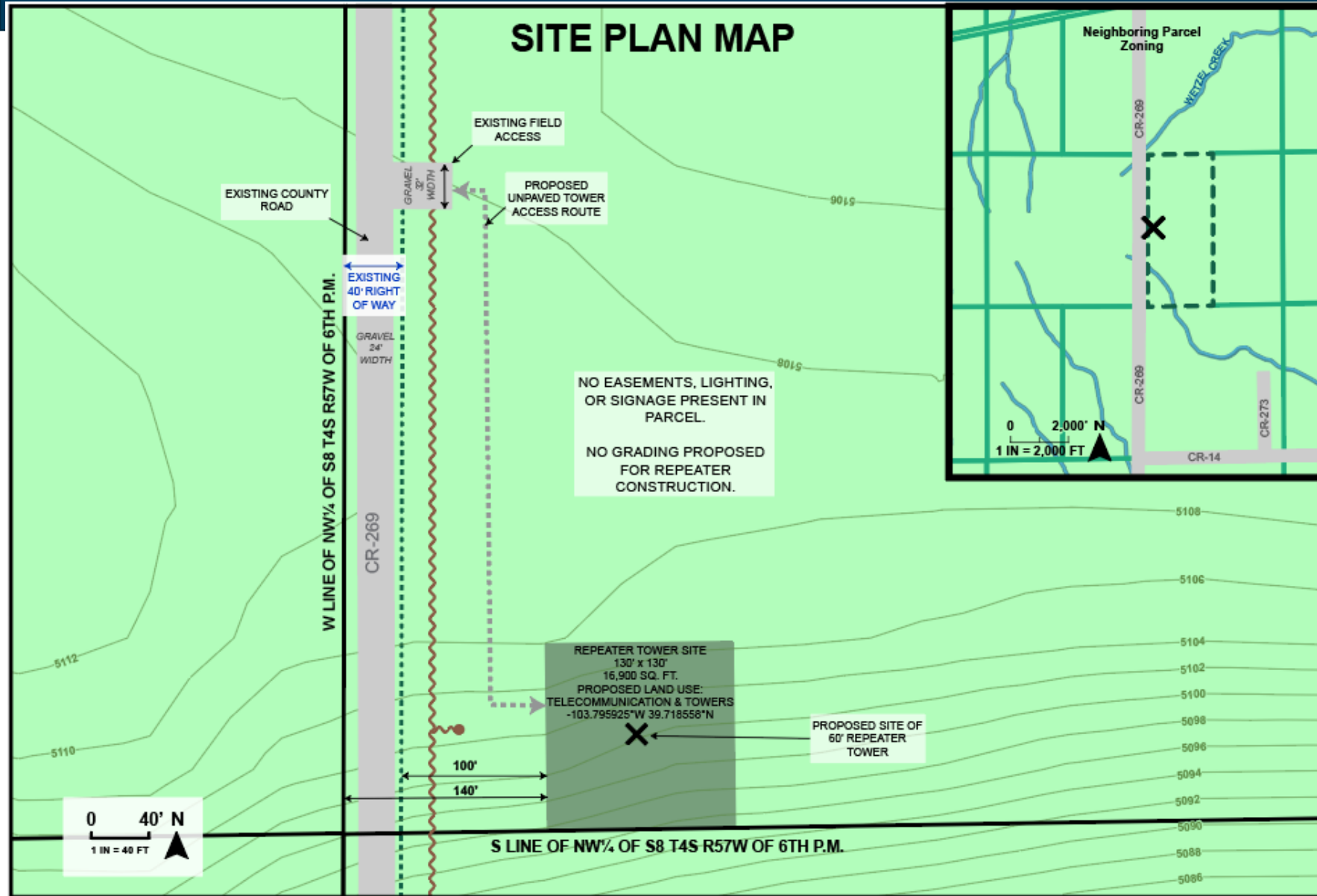
SPR Location and Extent: Repeater Tower Installation

- Address: 100 N Country Road 269, Deer Trail, CO 80105
- Parcel: #1993-00-0-00-026
- Legal Description: West 1/2 of Section 8 of Township 4S Range 57W





SPR Location and Extent: Repeater Tower Installation



- LEGEND**
- ✕ REPEATER TOWER LOCATION
 - ELECTRICAL POLE
 - ~ ELECTRICAL UTILITY LINE
 - EXISTING ROAD
 - ↔ PROPOSED UNPAVED ACCESS ROUTE
 - STREAM
 - QUARTER SECTION
 - ELEVATION COUNTOUR (FT)
 - ↔ RIGHT OF WAY
 - NEIGHBORING PARCEL
 - REPEATER TOWER PARCEL
 - REPEATER TOWER EXTENT
 - A-E ZONING

Definition: 2 Way Radio Repeater Tower

- Tower that extends the range of radio communications by retransmitting signals between radios
 - Signal Amplification
 - Increased Coverage



Need for Repeater Tower: Day to Day Communication



RURAL AREAS WITH UNRELIABLE
COVERAGE



MAIN FACILITY AND OPERATORS
CANNOT COMMUNICATE FOR
HOURS EVERY WORKDAY

Need for Repeater Tower: Operator Safety



Vehicles

- Crashes
- Break Downs



Animals

- Snakes
- Spiders
- Wildlife bites



Injury

- Accident with Heavy Equipment
- Medical Emergency
- Illness



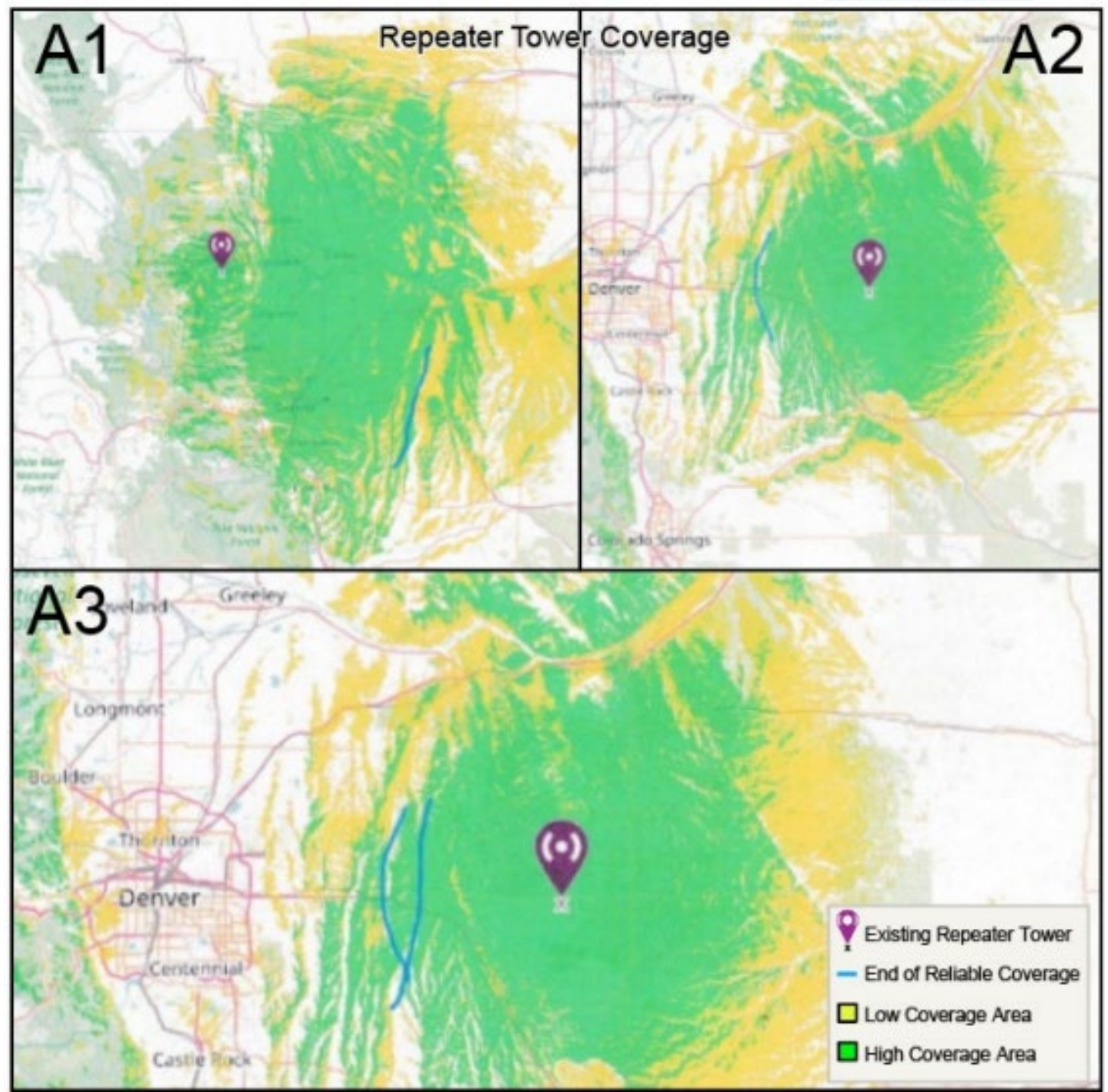
Weather

- Tornado
- Blizzard
- Hail
- Heat
- Lightning

Operators are often alone in rural areas with no radio or cell coverage. There is no nearby help nor hospitals in the event of an emergency.

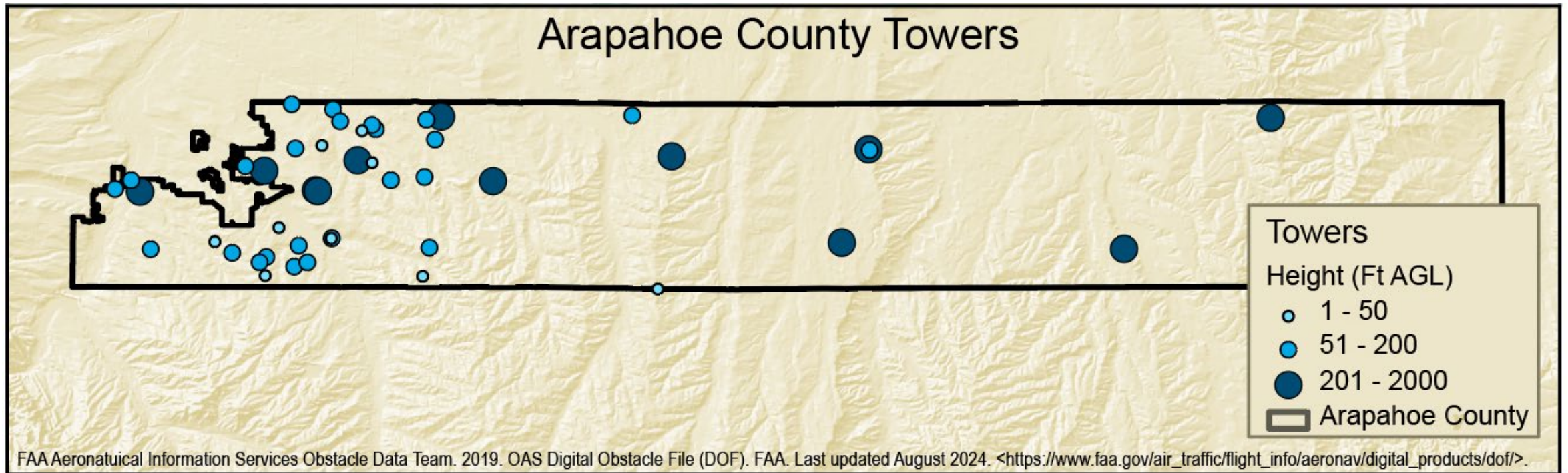
60 Foot Justification: Terrain

- 60' is the minimum height needed for continuous coverage over uneven terrain, per the contractor



60 Foot Justification: Existing Tower

- 24 non-meteorological towers between 50 and 100 feet in Arapahoe County
- 200 foot tower ~7 miles away from proposed repeater site



Questions?

