

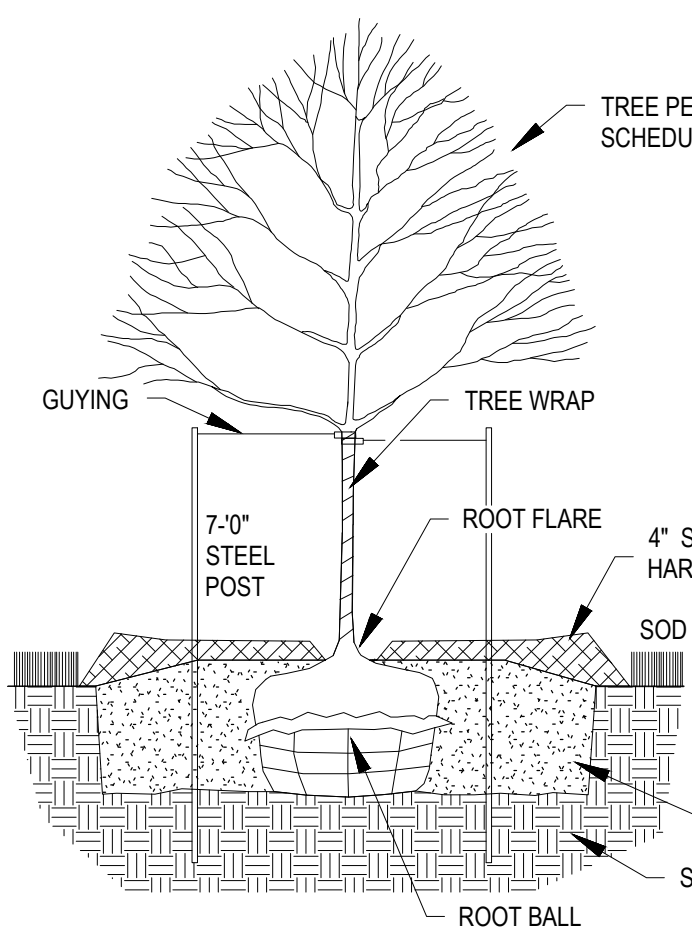
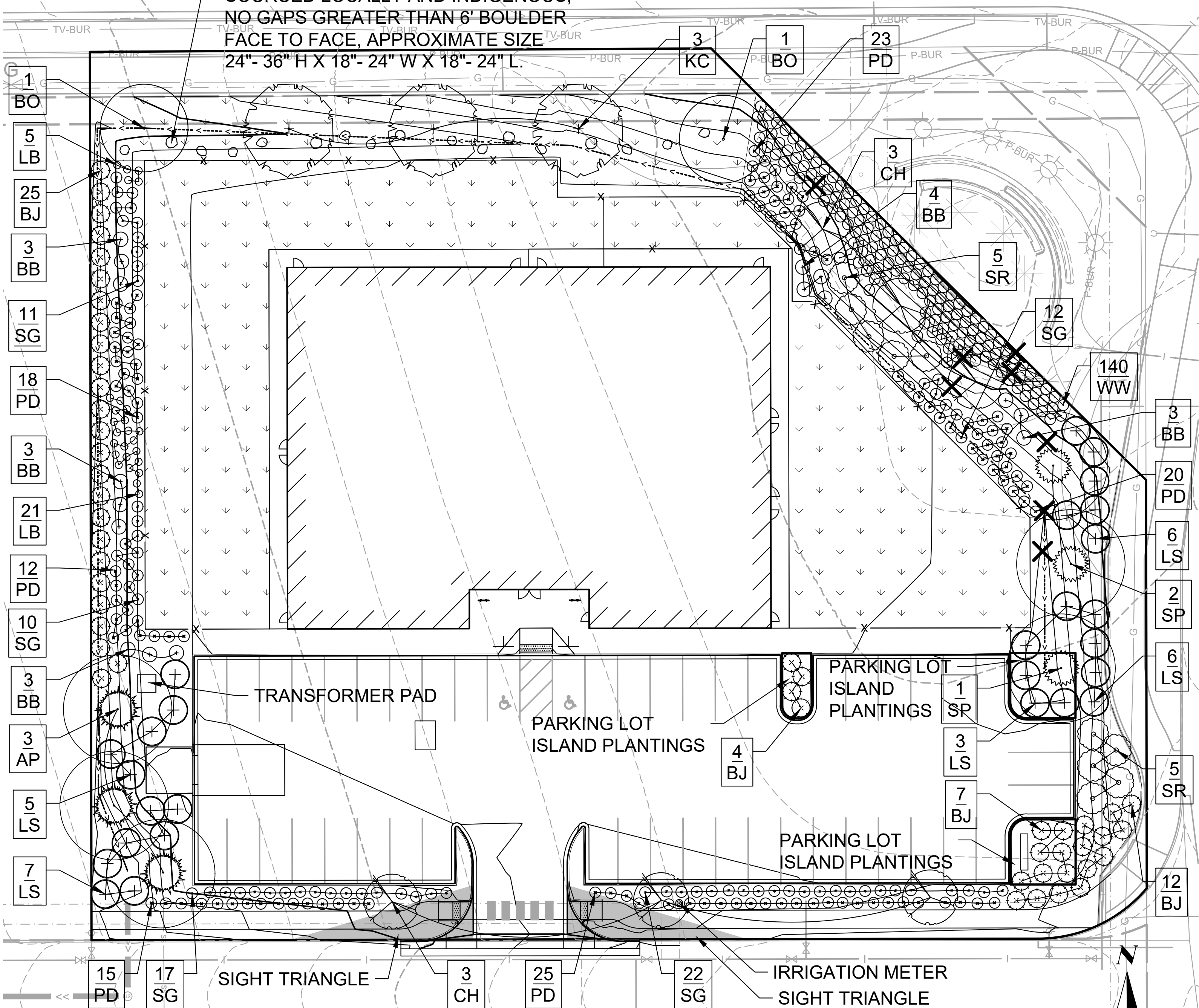
**NEW HORIZON ACADEMY AT COPPERLEAF  
ADMINISTRATIVE SITE PLAN**

LOT 5, BLOCK 1, COPPERLEAF FILING NO. 25

PART OF THE NORTHEAST QUARTER OF SECTION 11, TOWNSHIP 5 SOUTH, RANGE 66 WEST OF THE SIXTH PRINCIPAL MERIDIAN

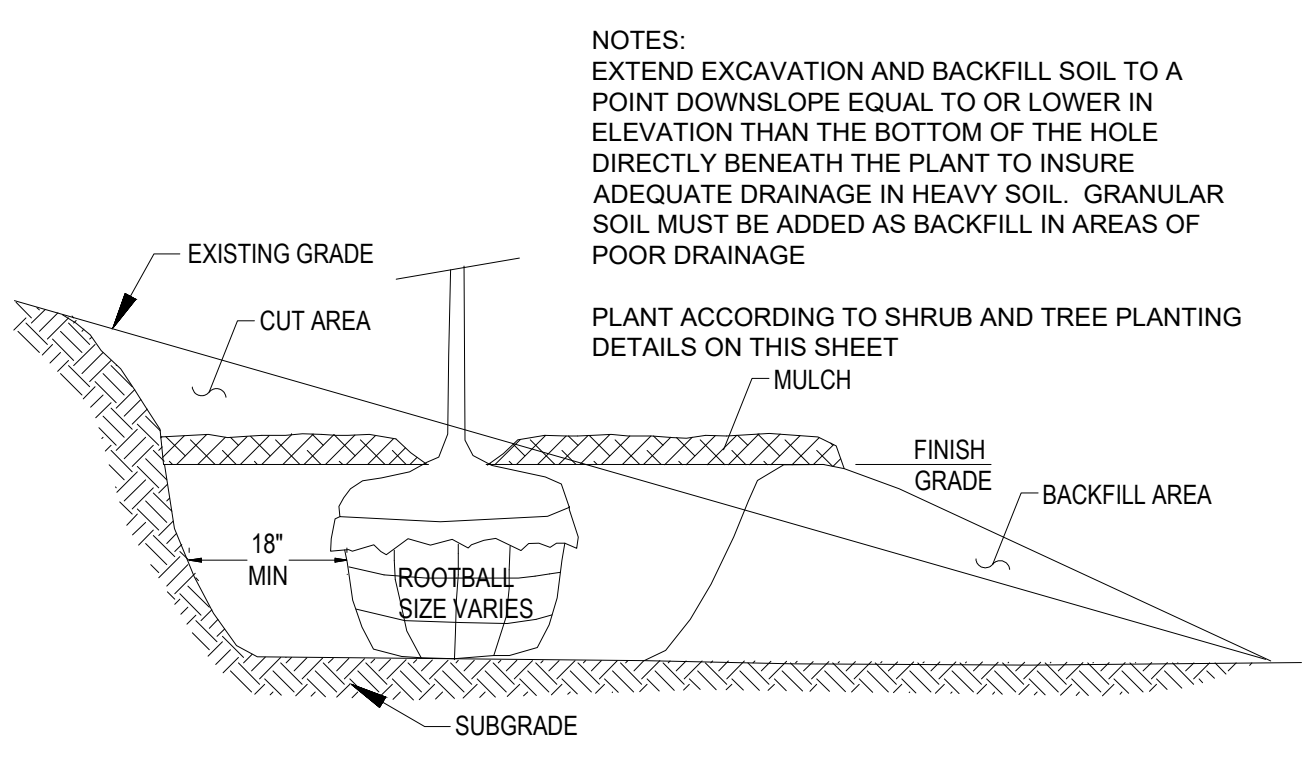
COUNTY OF ARAPAHOE, STATE OF COLORADO

17 BOULDERS (TYP.),  
SOURCED LOCALLY AND INDIGENOUS,  
NO GAPS GREATER THAN 6' BOULDER  
FACE TO FACE, APPROXIMATE SIZE  
24" - 36" H X 18" - 24" W X 18" - 24" L.



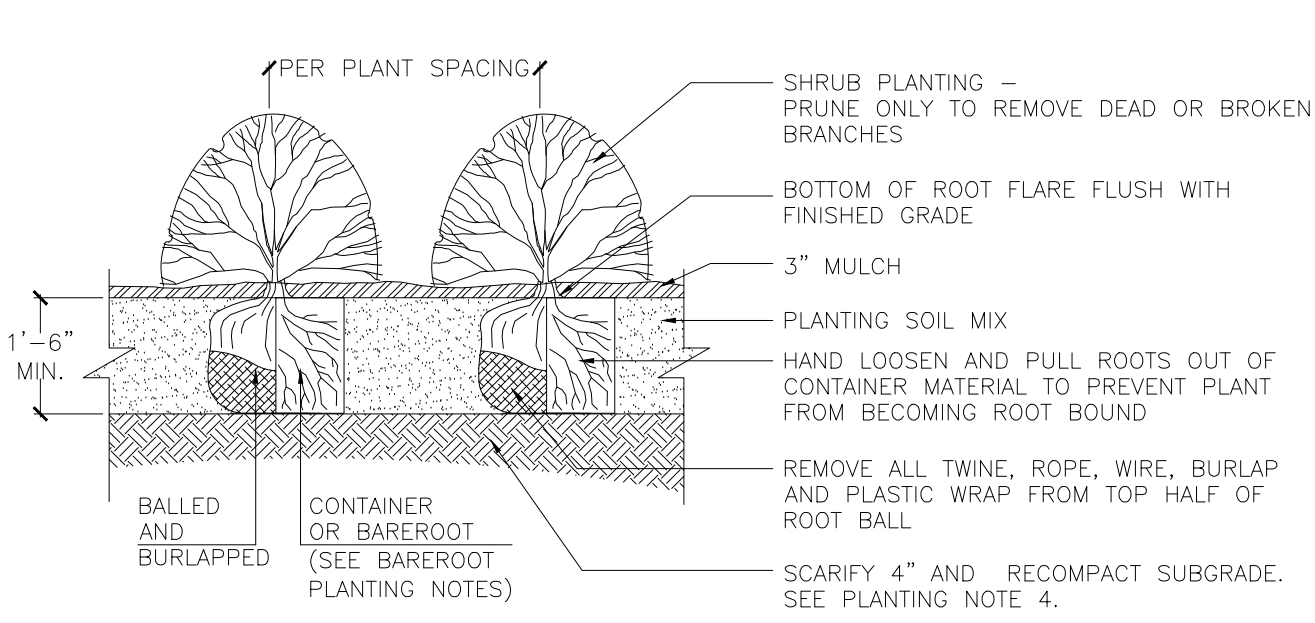
- NOTES:**
- REMOVE DEAD OR DAMAGED BRANCHES. RETAIN THE NATURAL FORM OF THE TREE. DO NOT CUT THE LEADER.
  - WIDTH OF PLANTING HOLES: 18" MIN. LARGER THAN ROOT BALL, ON ALL SIDES.
  - DEPTH OF HOLE: ROOT FLARE TO SIT AT OR UP TO 2" ABOVE THE TOP OF THE FINISHED SOIL ELEVATION. LEAVE SOIL UNDISTURBED BENEATH THE ROOT BALL.
  - SCARIFY BOTTOM AND SIDES OF HOLE PRIOR TO PLANTING.
  - SET PLANT ON UNDISTURBED SOIL OR THOROUGHLY COMPACTED PLANTING SOIL.
  - REMOVE TOP 1/3 OF THE BASKET OR THE TOP TWO HORIZONTAL RINGS WHICH EVER IS GREATER. COMPLETELY REMOVE ALL BURLAP FROM TOP 1/2 OF ROOT BALL. REMOVE ALL TWINE. REMOVE OR CORRECT STEM GIRDLING ROOTS.
  - SLIT REMAINING BURLAP AT 6" INTERVALS.
  - PLUMB & BACKFILL WITH PLANTING SOIL. THOROUGHLY WATER IN TREE WITHIN 2 HOURS TO SETTLE PLANTS AND FILL VOIDS.
  - BACKFILL VOIDS AND WATER A SECOND TIME.
  - PLACE 4" MULCH WITHIN 48 HOURS OF THE SECOND WATERING. NO MULCH TO BE IN CONTACT W/ TRUNK.
  - CONTRACTOR IS RESPONSIBLE FOR MAINTAINING TREES IN A PLUMB POSITION THROUGHOUT THE GUARANTEE PERIOD. STAKE TREES IF SITE CONDITIONS, SUCH AS SOIL AND WIND, PREVENT THE TREES FROM STAYING PLUMB. USE 16" LONG, 1 5/8" WIDE STRAPS, SEE SPECS. ATTACH TO POST WITH WIRE SEE SPECS. INSTALL POST 3" INTO GROUND. REMOVE WITHIN ONE YEAR.
  - WRAP TRUNK IN FALL REMOVE IN SPRING.
  - REFER TO SPECS. FOR PRODUCTS AND OTHER INFORMATION.

**2 TREE PLANTING DETAIL**  
NOT TO SCALE



- NOTES:**
- EXTEND EXCAVATION AND BACKFILL SOIL TO A POINT DOWNSLOPE EQUAL TO OR LOWER IN ELEVATION THAN THE BOTTOM OF THE HOLE DIRECTLY BENEATH THE PLANT TO INSURE ADEQUATE DRAINAGE IN HEAVY SOIL. GRANULAR SOIL MUST BE ADDED AS BACKFILL IN AREAS OF POOR DRAINAGE.

**3 PLANTING ON A SLOPE DETAIL**  
NOT TO SCALE



**4 SHRUB PLANTING DETAIL**  
NOT TO SCALE

LANDSCAPING SHALL BE PLANTED AND MAINTAINED IN A NEAT, CLEAN AND HEALTHY CONDITION BY THE CONTRACTOR. THIS SHALL INCLUDE PROPER PRUNING, MOWING AND AERATION OF LAWNS, REPLACEMENT OF MULCH, WEEDING, REMOVAL OF LITTER AND THE REGULAR WATERING OF ALL PLANTINGS. IRRIGATION SHALL BE MAINTAINED TO MINIMIZE WATER CONSUMPTION. SHOULD ANY PLANT MATERIAL DIE, THE CONTRACTOR, SUCCESSOR, OR ASSIGNS SHALL BE RESPONSIBLE FOR THE REPLACEMENT OF PLANT(S) WITHIN ONE PLANTING SEASON. REPLACEMENT OF PLANT MATERIALS SHALL OCCUR AT THE FOLLOWING RATE.

TYPE	PLANT REPLACEMENT WITHIN	
	1 YEAR	2+ YEARS
TREE-DECIDUOUS	INCREASE CALIPER BY 1"	INCREASE CALIPER BY 1.5"
TREE-CONIFEROUS	INCREASE CALIPER BY 1"	INCREASE CALIPER BY 1.5"
SHRUB	REPLACE WITH PLANTS OF AT LEAST 1/2 MATURE SIZE	REPLACE WITH PLANTS OF AT LEAST 1/2 MATURE SIZE

IF TRANSFORMERS, GROUND MOUNTED HVAC EQUIPMENT, UTILITY PEDESTALS, ETC. ARE NOT SHOWN ON THE SITE IMPROVEMENT PLAN, ADDITIONAL LANDSCAPING/SCREENING MAY BE REQUIRED BASED UPON FIELD CONDITIONS DISCOVERED VIA THE SITE INSPECTION BY STAFF. MADE PRIOR TO THE ISSUANCE OF THE CERTIFICATE OF OCCUPANCY, OR FINAL INSPECTION AS APPLICABLE.  
HAND EXCAVATION ONLY WHEN UTILITIES ARE UNDER PROPOSED PLANTINGS

**NOTE:**

- ALL UTILITY EASEMENT SHALL REMAIN UNOBSTRUCTED AND FULLY ACCESSIBLE ALONG THEIR ENTIRE LENGTH FOR MAINTENANCE EQUIPMENT ENTRY.
- THE DEVELOPER, HIS SUCCESSORS AND ASSIGNS, SHALL BE RESPONSIBLE FOR INSTALLATION, MAINTENANCE AND REPLACEMENT OF ALL LANDSCAPING MATERIALS SHOWN OR INDICATED ON THE APPROVED SITE PLAN OR LANDSCAPE PLAN ON FILE IN THE PLANNING DEPARTMENT. ALL LANDSCAPING WILL BE INSTALLED AS DELINEATED ON THE PLAN, PRIOR TO ISSUANCE OF CERTIFICATES OF OCCUPANCY.
- ALL LANDSCAPED AREAS AND PLANT MATERIAL, EXCEPT FOR NON-IRRIGATED NATIVE, RESTORATIVE, AND DRYLAND GRASS AREAS THAT COMPLY WITH REQUIREMENTS FOUND IN SEC. 146-1429 AND/OR SEC. 146-1435 MUST BE WATERED BY AN AUTOMATIC UNDERGROUND IRRIGATION SYSTEM. IRRIGATION SYSTEM DESIGN, INSTALLATION, OPERATION, AND MAINTENANCE SHALL CONFORM TO REQUIREMENTS FOUND IN THE CITY OF AURORA IRRIGATION ORDINANCE.

**LANDSCAPE SPECIFICATIONS**

- TREES, SHRUBS, AND PERENNIALS**
- REFERENCES
    - CDOT - COLORADO DEPARTMENT OF TRANSPORTATION, 2017 EDITION.
    - AMERICAN STANDARD FOR NURSERY STOCK, ANSI Z60.1-2014.
  - QUALITY ASSURANCE
    - WORK SHALL BE PERFORMED BY A LANDSCAPE CONTRACTOR WITH EXTENSIVE HORTICULTURE KNOWLEDGE, AND A MIN. OF 3 YEARS EXPERIENCE.
    - HANDLE PLANTS IN SUCH A WAY AS TO PROTECT FROM DAMAGE EITHER PHYSICAL OR BY EXPOSURE TO SUN AND WIND. MISHANDLED PLANTS ARE SUBJECT TO REJECTION BY LANDSCAPE ARCHITECT.
    - PLANTS USED ON THIS PROJECT SHALL MEET THE GRADING STANDARDS RECOMMENDED BY THE ANSI Z60.1-2014.
  - PRODUCTS
    - PLANTS: PROVIDE AS SPECIFIED ON PLANT SCHEDULE.
    - EDGING: RYERSON STEEL EDGING 3/8" X 5" W/ 18" STAKES, OR EQUAL.
    - MULCH: SHREDDED HARDWOOD MULCH, COLOR: COCOA BROWN.
    - WATER: CONTRACTOR TO PROVIDE.
    - PLANTING SOIL MIX: RICH SANDY LOAM, FREE OF DEBRIS AND SEEDS, AND CONFORMING TO CDOT 207 (TOPSOIL).
    - SOIL AMENDMENTS: CONFORMING TO CDOT 212 (SEEDING, FERTILIZER, SOIL CONDITIONS AND SODDING).
    - TREE WRAP: TWO-PLY WEATHER RESISTANT PAPER PRODUCT.
  - PLANTING DATES: SPRING PLANTING: APR. 1- JUNE 15. THESE DATES MAY BE EXTENDED IF DAYTIME TEMPS. REMAIN BELOW 80 DEGREES. FALL: SEPT. 30 - OCT. 30TH. DAYTIME TEMPS. NEED TO DROP BELOW 80 DEGREES BEFORE PLANTING BEGINS, AND MAY CONTINUE UNTIL FREEZE UP. CONIFEROUS TREES AUG. 15- OCT. 1ST. PLANT UNDER FAVORABLE WEATHER CONDITIONS, DO NO PLANT DURING DAYS OF EXTREME HEAT.
  - EXECUTION
    - PLANT INTO PREPARED PLANTING BEDS.
    - PRIOR TO DIGGING, CONTRACTOR TO HAVE UTILITIES LOCATED AND MARKED.
    - CONTRACTOR TO NOTIFY LANDSCAPE ARCHITECT 3 DAYS IN ADVANCE OF WHEN PLANTING WORK WILL OCCUR.
    - INSTALL TREES, SHRUBS, AND PERENNIALS PER PLANTING DETAILS, ADJUST LOCATION IF IN CONFLICT WITH UTILITIES. VERIFY NEW LOCATION WITH LANDSCAPE ARCHITECT PRIOR TO PLANTING.
    - SEPARATE ALL SHRUB BEDS FROM SOD AREAS WITH METAL EDGER.
    - CLEAN-UP ENTIRE SITE FOLLOWING PLANTING OPERATIONS.
  - ACCEPTANCE OF PLANTING WORK
    - CONTRACTOR TO NOTIFY OWNER WHEN PLANTING WORK IS COMPLETE FOR REVIEW AND PUNCH LIST.
    - CONTRACTOR TO WATER AND MAINTAIN THE TREES, SHRUBS, AND PERENNIALS UNTIL OWNER ACCEPTANCE.
    - OWNER WILL GIVE ACCEPTANCE OF WORK, FOLLOWING SATISFACTORY CORRECTION OF PUNCH LIST ITEMS.
    - WATERING AND REGULAR LANDSCAPE MAINTENANCE OF TREES, SHRUBS, AND PERENNIALS WILL BE OWNERS RESPONSIBILITY FOLLOWING OWNER ACCEPTANCE OF WORK.
  - GUARANTEE PERIOD
    - CONTRACTOR TO WARRANTY TREES, SHRUBS, AND PERENNIALS FOR TWO YEARS FOLLOWING ACCEPTANCE OF WORK BY OWNER.
    - CONTRACTOR TO MAINTAIN THE TREES IN A PLUMB POSITION THROUGHOUT THE GUARANTEE PERIOD.
    - CONTRACTOR TO REMOVE ALL STAKING/ WIRING/ STRAPS FROM TREES AT THE END OF THE GUARANTEE PERIOD.
    - REPLACEMENTS: AT THE END OF THE GUARANTEE PERIOD, ALL PLANTS WHICH ARE UNHEALTHY, DEAD, NOT HAVING A NORMAL DENSITY, SIZE, SHAPE OR COLOR SHALL BE REPLACED. REPLACEMENTS SHALL MATCH CALIPER AND/OR HEIGHT OF THE OTHER PLANTS AT TIME OF REPLACEMENT. SELECTION OF REPLACEMENT MATERIAL AND INSTALLATION PRACTICES SHALL FOLLOW THE REQUIREMENTS OF THE DRAWINGS AND SPECIFICATIONS.
  - IRRIGATION
    - CONFORM TO THE REQUIREMENTS OF CDOT 107.14 (INTERRUPTION OF IRRIGATION WATER FLOW), CDOT 623 (IRRIGATION SYSTEM) AND ALL OTHER APPLICABLE CDOT IRRIGATION MATERIALS AND CONSTRUCTION REQUIREMENTS.

**NOTE:**  
SEE SHEET 3 FOR EASEMENT RECORDATION INFORMATION

**1 LANDSCAPE PLAN**

PLANTING SCHEDULE							
SYM	QTY	COMMON NAME	BOTANICAL NAME	SIZE	NOTES	COUNTY REQ.	WATER USAGE REQUIREMENTS
<b>Trees</b>				<b>17</b>			
KC	3	Kentucky Coffee Tree	<i>Gymnocladus dioica</i> 'Espresso'	2.5" B&B			Water Conserving
BO	2	Bur Oak	<i>Quercus macrocarpa</i>	2.5" B&B			Non-water
CH	6	Thornless Cockspur Hawthorn	<i>Crataegus crus-galli</i> var. <i>inermis</i>	2.5" B&B			Non-water
AP	3	Austrian Pine	<i>Pinus nigra</i>	6' Ht			Non-water
SP	2	Scotch Pine	<i>Pinus sylvestris</i>	6' Ht			Non-water
<b>Shrubs</b>				<b>85</b>			
BJ	37	Broadmoor Juniper	<i>Juniperus sabina</i> 'Broadmoor'	5 Gal	6' o.c.		Water Conserving
LS	24	Gro-Low Sumac	<i>Rhus aromatica</i> 'Gro-Low'	5 Gal			Non-water
SR	10	Yellow Shrub Rose	<i>Rosa</i> 'Golden Wings'	5 Gal	9' o.c.		Water Conserving
<b>Ornamental Grasses</b>				<b>255</b>			
BB	16	Big Bluestem	<i>Andropogon gerardii</i>	1 Gal	6' o.c.		Non-water
LB	26	Little Bluestem	<i>Schizachyrium scoparium</i>	1 Gal	3' o.c.		Non-water
PD	113	Prairie Dropseed	<i>Sporobolus heterolepis</i>	1 Gal	4' o.c.		Non-water
SG	72	Switchgrass	<i>Panicum virgatum</i>	1 Gal	4' o.c.		Non-water
WW	140	Western Wheatgrass	<i>Pascopyrum smithii</i>	1 Gal	3' o.c.		Non-water

PARKING LOT ISLAND PLANTING SCHEDULE							
SYM	QTY	COMMON NAME	BOTANICAL NAME	SIZE	NOTES	COUNTY REQ.	WATER USAGE REQUIREMENTS
SP	1	Scotch Pine	<i>Pinus sylvestris</i>	6' Ht			Non-water
BJ	11	Broadmoor Juniper	<i>Juniperus sabina</i> 'Broadmoor'	5 Gal	6' o.c.		Water Conserving
LS	3	Gro-Low Sumac	<i>Rhus aromatica</i> 'Gro-Low'	5 Gal			Non-water

ARAPAHOE COUNTY CASE NO. USR20-002

NEW HORIZON ACADEMY  
LOT 5, BLOCK 1, COPPERLEAF FILING NO. 25  
ARAPAHOE, CO

SEH Project NHOAC 151271  
Checked By DRH  
Drawn By ANP  
Project Status Issue Date  
COUNTY REVIEW 11/02/2020  
COUNTY REVIEW 1/08/2021

Revision Issue  
Rev. # Description Date