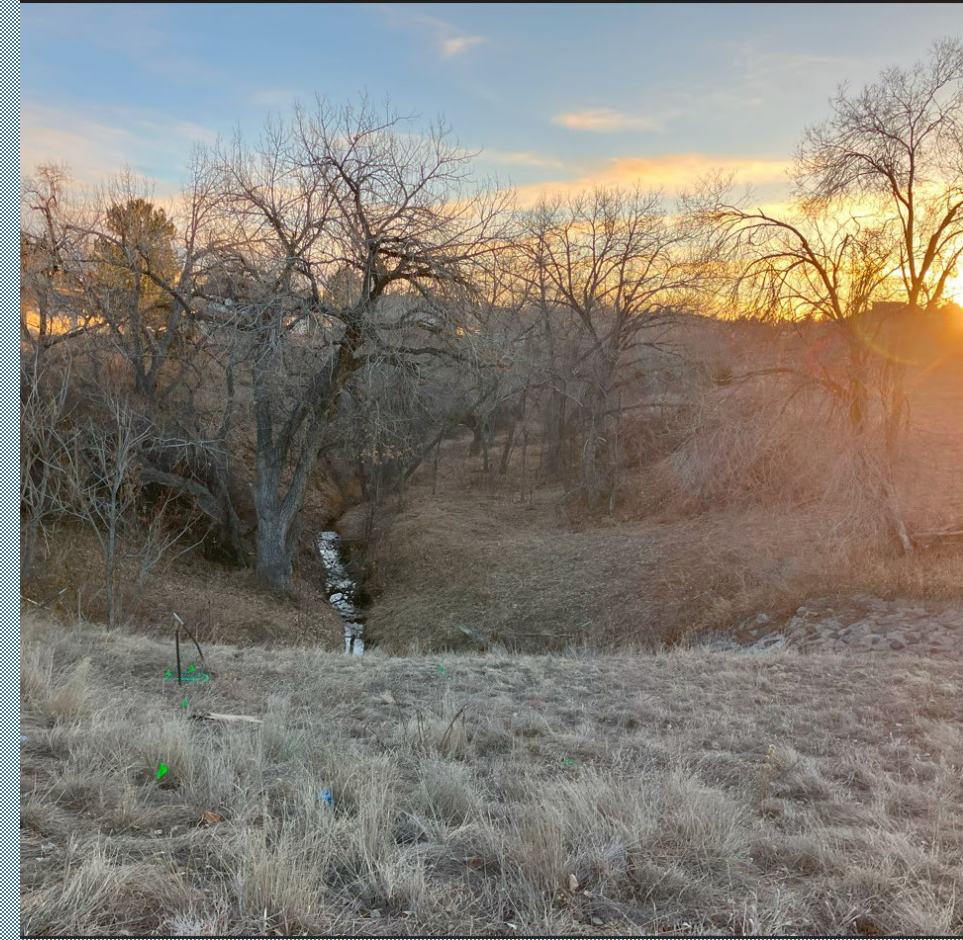


LEE GULCH TRAIL PEDESTRIAN UNDERPASS

Sarah White
Water Resources Manager
City of Littleton

FEBRUARY 24, 2025



PROJECT OVERVIEW

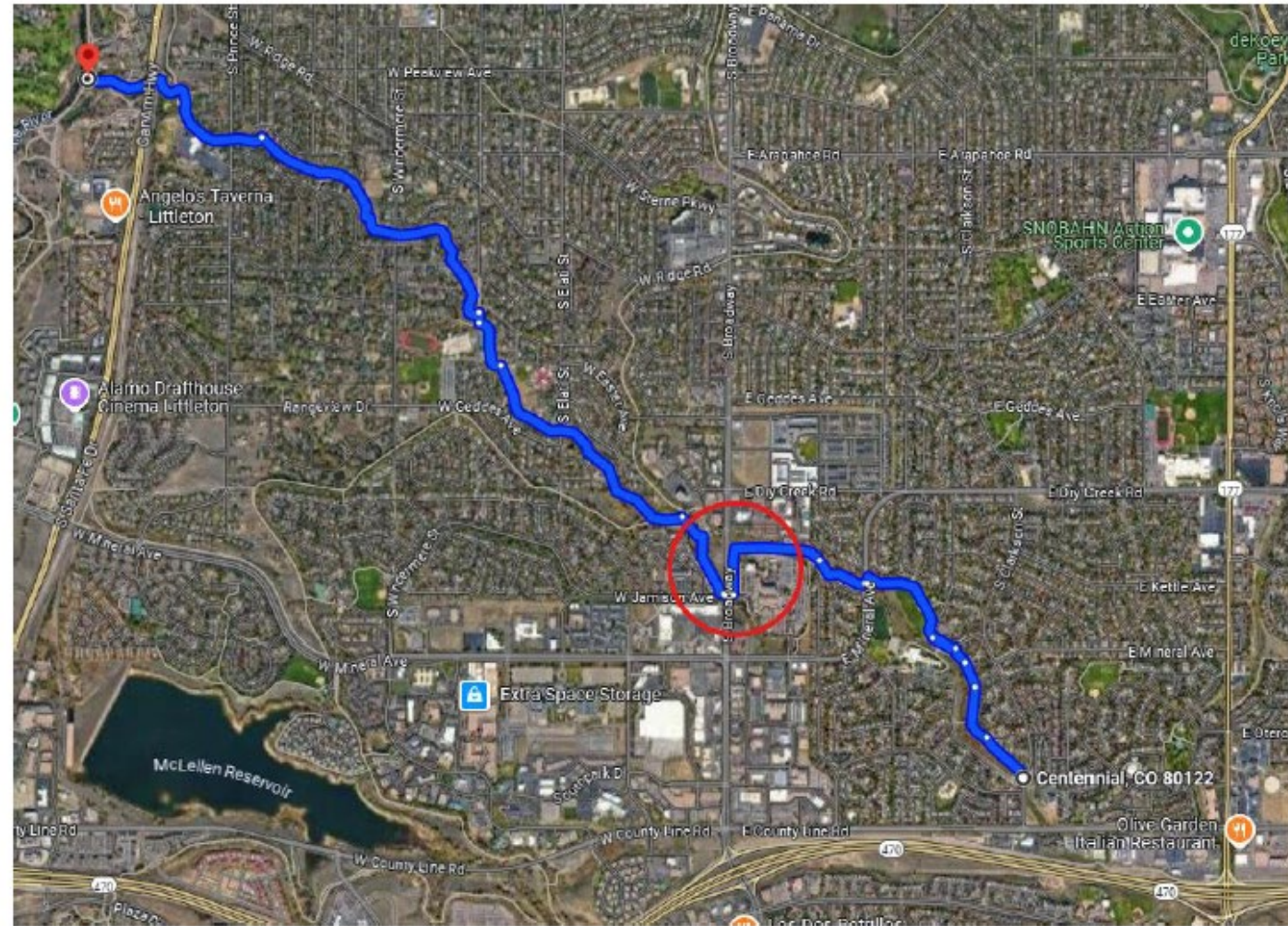
Lee Gulch at Broadway

- Emergency culvert repairs are required
- Full excavation of Broadway
- 1978 Lee Gulch Major Drainageway Plan (MDP) – Broadway overtops in large storms, pipe upsizing recommended
- Lee Gulch Regional Trail detours at Broadway

LEE GULCH TRAIL

■ Master Plans

- 1978 SSPRD Master Plan, Littleton and Arapahoe County Land Use Plans
 - Envisioned linear park along Lee Gulch from the South Platte to County Line Road.
 - Recreational trail along all reaches.
- 2019 Littleton Transportation Master Plan
 - Grade separated crossing identified
- 2019 The Plan for the High Line Canal
 - Identifies this location as an "Opportunity Area".
- 2022 South Suburban Master Plan
 - Trails are the most requested priority for improvement.
 - Guiding Principle to "Connect Community" through close to home trails that contribute to quality of life.

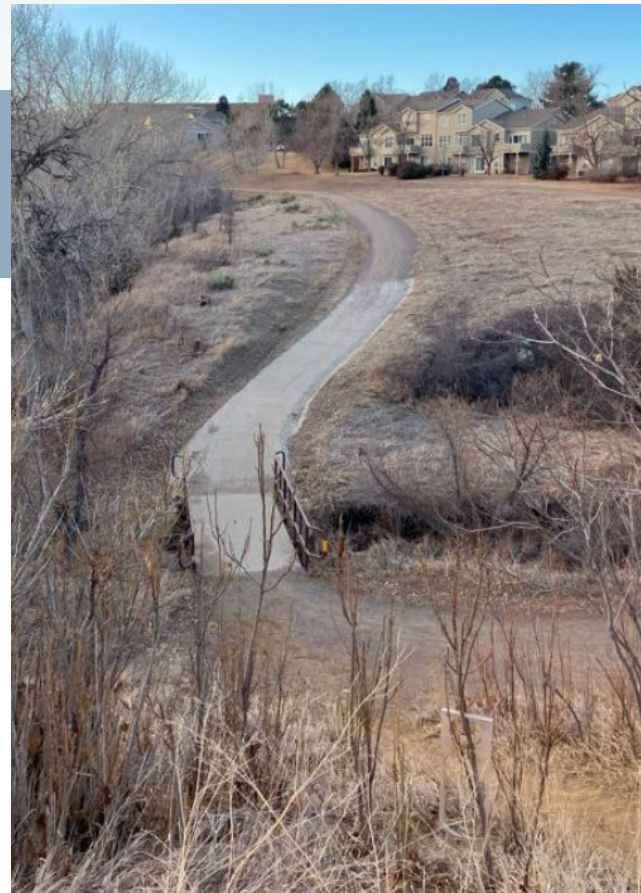


County Line Rd to the South Platte River

LEE GULCH TRAIL

Detour at Broadway

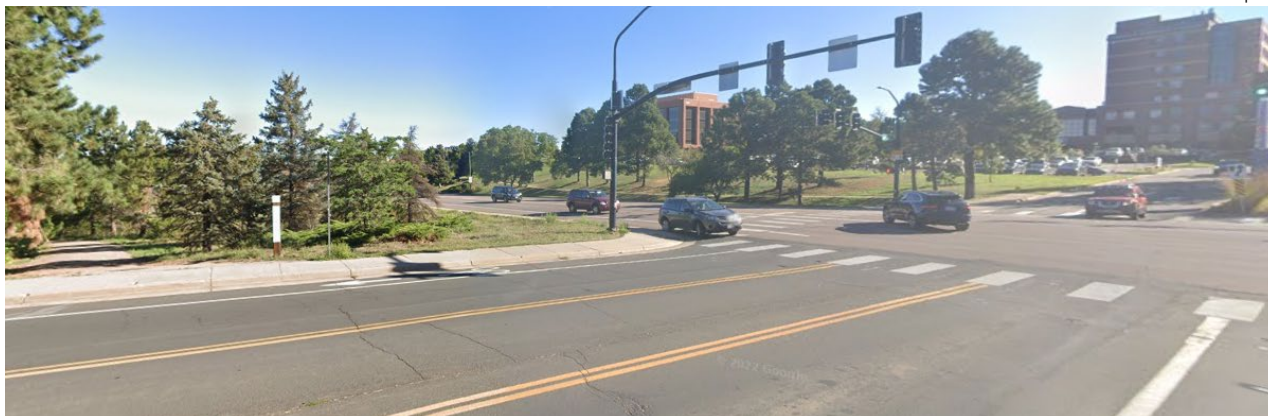
- Crossing at hospital emergency Access
- East detour along hospital property
- West detour steep grade



Western Slopes

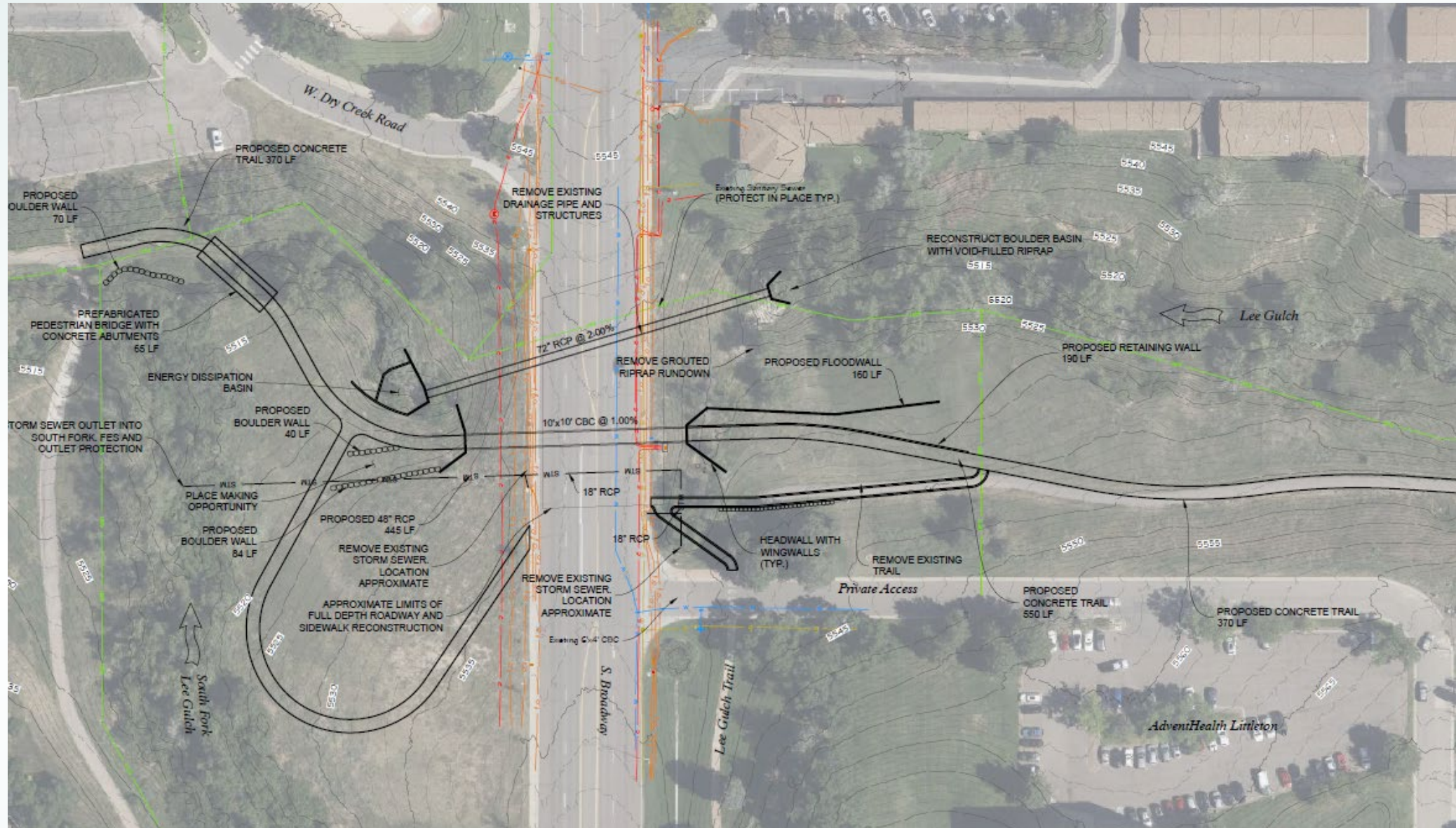


East Detour at Littleton Adventist Hospital



Crossing at Broadway

PROPOSED DESIGN



PROJECT COSTS

Total Project

- \$7,864,625

Cost Culvert Repairs Alone (no underpass option)

- \$3,469,058

Trail Improvements (split overhead costs with culvert repairs)

- \$4,216,159

For comparison:

- Highline Canal at Arapahoe Rd – Box Culvert Replacement Estimate \$10.6 Million (2022)

PROPOSED PARTNER FUNDING

Pedestrian Underpass and Trail Connection

- Project Costs \$4,216,159.00

ACOS Joint Grant Request

- Grant Request Amount \$2,108,079.00
- City of Littleton Match \$1,054,040.00
- Project Partner SSPRD \$1,054,040.00

- Matching funds are not yet secured. County funding would be contingent on Littleton and SSPRD securing their matching funds.

OPERATIONS AND MAINTENANCE

Pedestrian Underpass and Trail Connection

- South Suburban Park and Recreation District have committed to maintain the underpass, bridge, trail, and surrounding open space.
- Expenses related to operations and maintenance will be paid for from South Suburban's operating budget.
- The estimated additional annual maintenance cost is \$7,680.

TIMELINE

March 2025 - May 2025

- Begin Culvert Repairs

May 2025 – November 2025

- Underpass and Roadway Completion

December 2025 – February 2026

- Trail and Bridge Work

March 2026 – June 2026

- Revegetation of Disturbed Areas

October 2026

- Project Complete

SUMMARY

- Emergency culvert repairs are providing unplanned opportunity to install long envisioned missing trail link.
- Current master plans identify the need for trail connections.
- Provides safer street crossing for trail users.
- Combining projects provide cost sharing benefit.
- A truly unique opportunity.

QUESTIONS?

