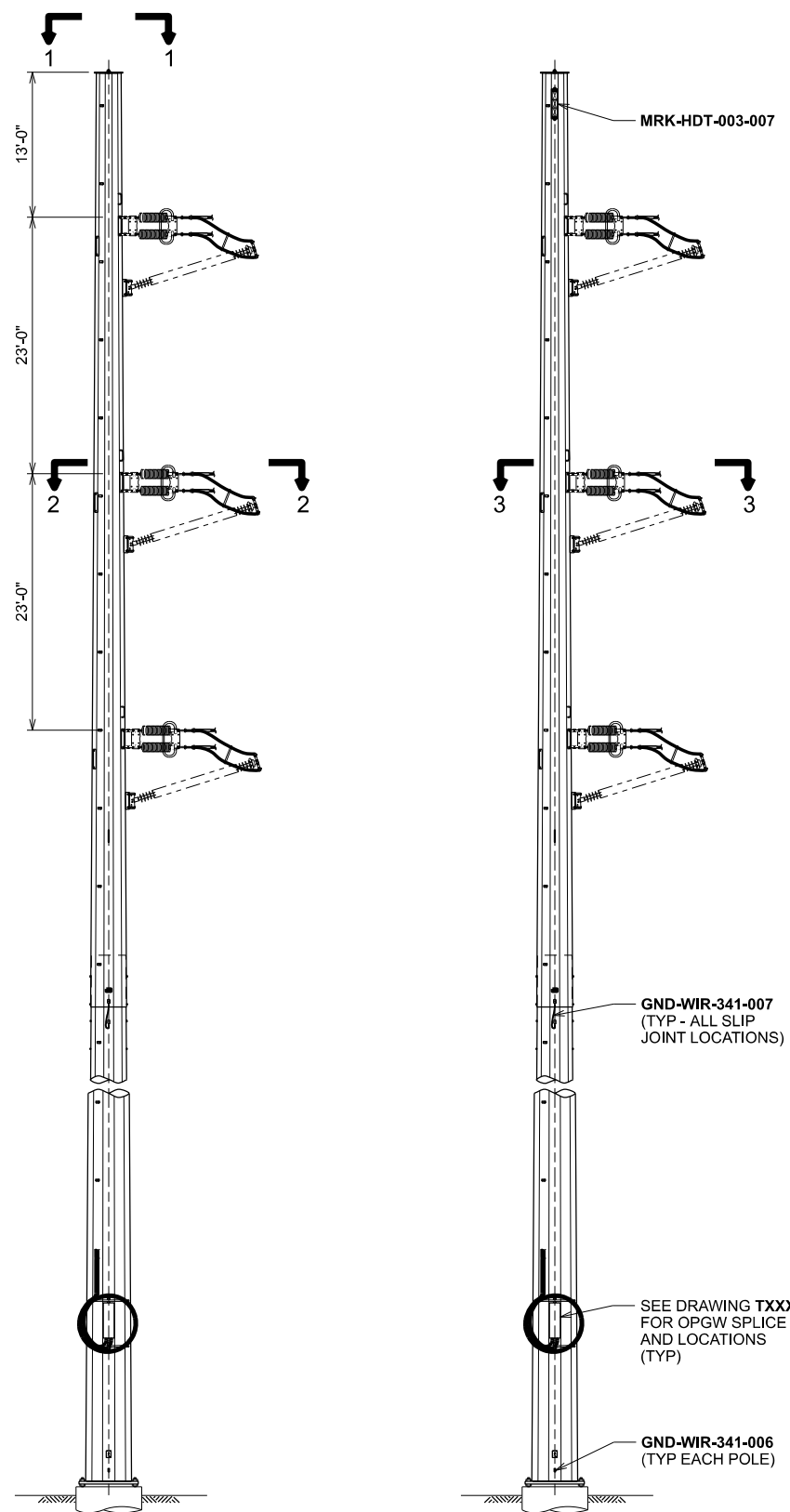
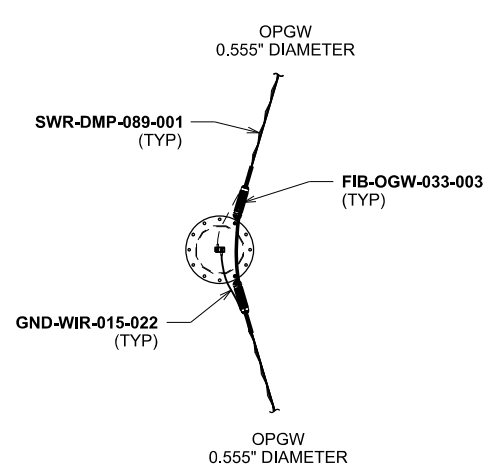


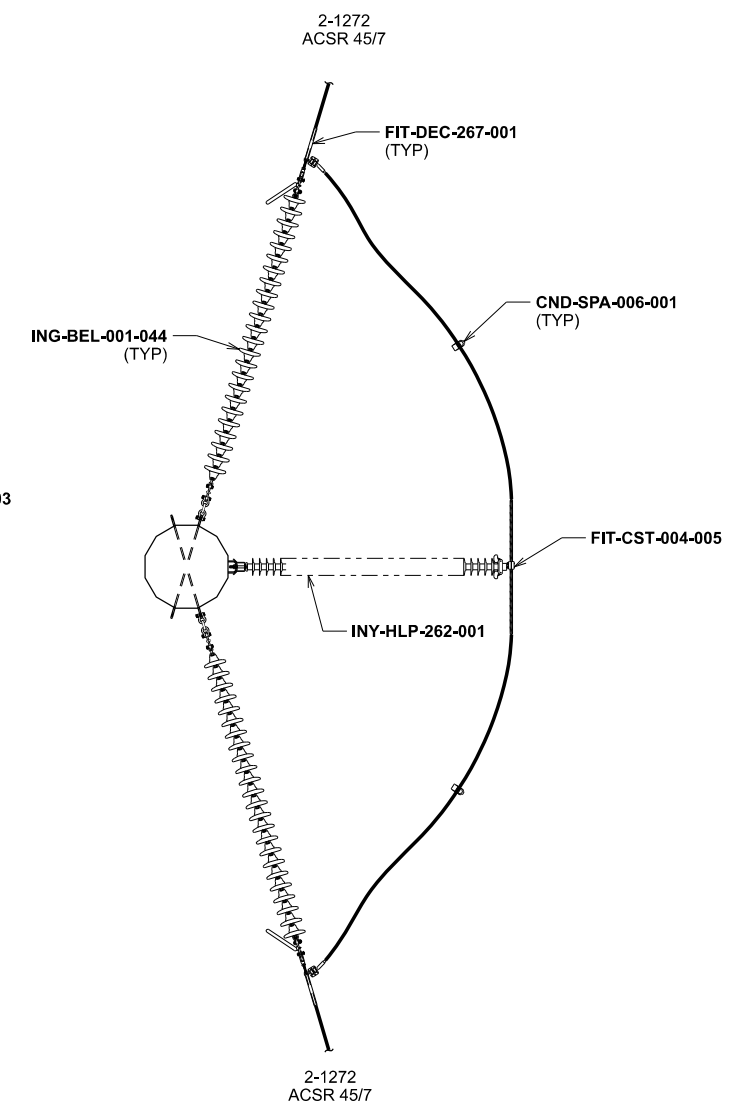
# DEADEND STRUCTURE



**ELEVATION VIEW**  
SCALE: 1/16" = 1'-0"

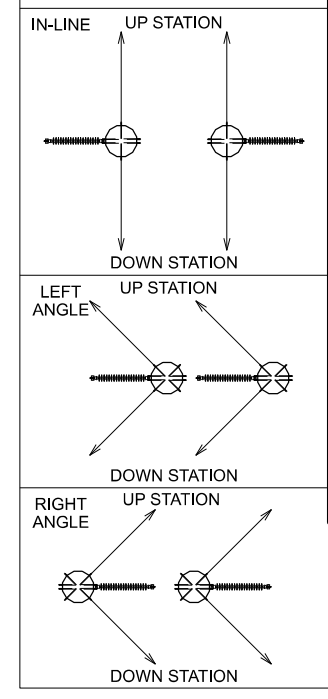


**SECTION 1-1**  
OPGW SHIELD WIRE  
SCALE: NONE  
(TYPICAL BOTH POLES)



**SECTION 2-2**  
CONDUCTOR  
SCALE: NONE  
(TYPICAL BOTH POLES)

## JUMPER POST ORIENTATION



ASSEMBLY  
STR SWDBHLZ1-P1  
FOR STEEL POLES  
LD T366C007

QTY	SUBASSEMBLIES
12	CND-SPA-006-001
4	FIB-OGW-033-003
3	FIT-CST-004-005
12	FIT-DEC-267-001
4	GND-WIR-015-022
2	GND-WIR-341-006
4	GND-WIR-341-007
6	ING-BEL-001-044
3	INY-HLP-262-001
1	MRK-HDT-003-007
4	SWR-DMP-089-001

ASSEMBLY  
STR SWDBHLZ1-P2

QTY	SUBASSEMBLIES
3	FIT-CST-004-005
12	FIT-DEC-267-001
6	ING-BEL-001-044
3	INY-HLP-262-001

**NOTE:**  
1. TWO SLIP JOINTS ASSUMED FOR BONDING SUBASSEMBLY GND-WIR-341-007 QUANTITY ON THIS TYPICAL DRAWING. ADDITIONAL QUANTITY WILL BE PROVIDED FOR POLES WITH MORE THAN TWO JOINTS.

**DRAWING REFERENCE**  
PLAN & PROFILE \_\_\_\_\_ XXXXXXXX  
SUBASSEMBLY INDEX \_\_\_\_\_ XXXXXXXX

THIS PE SEAL IS ONLY APPLICABLE TO THE CURRENT CONSTRUCTION REVISION

ISSUED BY ENGINEERING DEPT FOR: CONSTRUCTION

THIS MAP/DOCUMENT IS A TOOL TO ASSIST EMPLOYEES IN THE PERFORMANCE OF THEIR JOBS. YOUR PERSONAL SAFETY IS PROVIDED FOR BY USING SAFETY PRACTICES, PROCEDURES AND EQUIPMENT AS DESCRIBED IN THE SAFETY TRAINING PROGRAMS, MANUALS AND SPARS.  
INTERNAL INFORMATION: DO NOT COPY OR DISTRIBUTE WITHOUT EXPRESS WRITTEN CONSENT FROM XCEL ENERGY

**CIRCUIT 7251** **345 kV**  
STRUCTURE DRAWING – DEADEND – STEEL  
2-POLE, VERTICAL, ON FOUNDATION

**SWDBHLZ1-1** SCALE: AS NOTED REV: 0

REV	DATE	WBS 4	REVISION DESCRIPTION
0	10/26/2021	A.0001672.004.001.003	IFC - INSTALLATION OF 345KV TRANSMISSION LINE

SWDBHLZ1-1.DGN 8/26/2021 9:15:14 AM

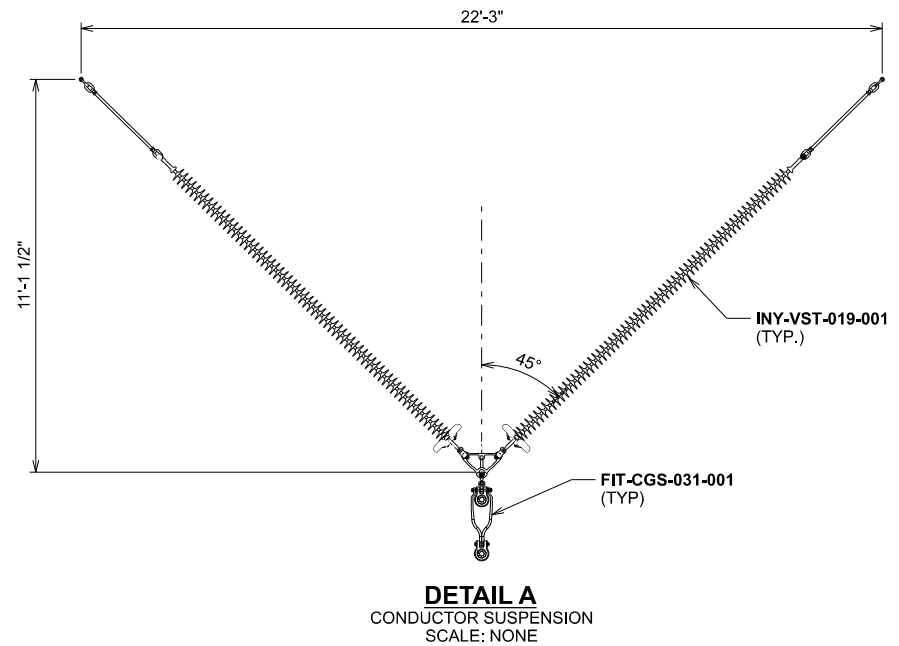
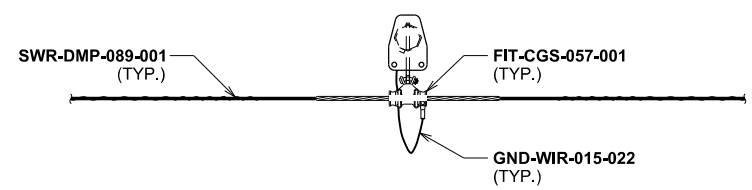
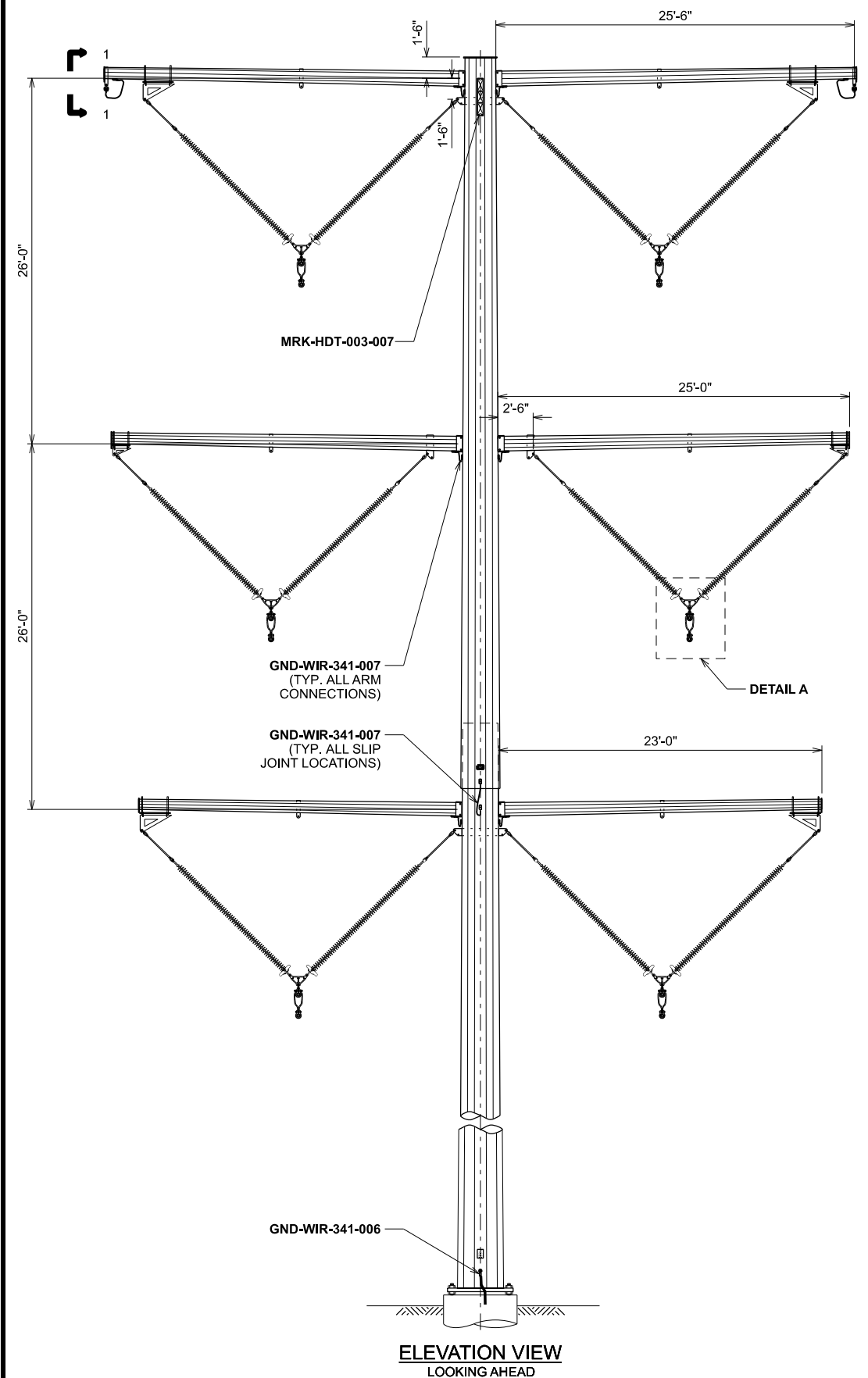
# TANGENT STRUCTURE

ASSEMBLY  
STR SWSAHQZ1-P1  
FOR STEEL POLES  
LD T366C017

QTY	SUBASSEMBLIES
2	FIT-CGS-057-001
3	FIT-CGS-031-001
2	GND-WIR-015-022
1	GND-WIR-341-006
8	GND-WIR-341-007
3	INY-VST-019-001
1	MRK-HDT-003-007
4	SWR-DMP-089-001

ASSEMBLY  
STR SWSAHQZ1-P2  
FOR STEEL POLES  
LD T366C017

QTY	SUBASSEMBLIES
3	FIT-CGS-031-001
3	INY-VST-019-001



**NOTE:**

- TWO SLIP JOINTS ASSUMED FOR BONDING SUBASSEMBLY GND-WIR-341-007 QUANTITY ON THIS TYPICAL DRAWING. ADDITIONAL QUANTITY WILL BE PROVIDED FOR POLES WITH MORE THAN TWO JOINTS.

**DRAWING REFERENCE**

PLAN & PROFILE \_\_\_\_\_ T366G001  
SUBASSEMBLY INDEX \_\_\_\_\_ T366X001

ELEVATION: <7,300 FT

ISSUED BY ENGINEERING DEPT FOR: CONSTRUCTION

THIS MAP/DOCUMENT IS A TOOL TO ASSIST EMPLOYEES IN THE PERFORMANCE OF THEIR JOBS. YOUR PERSONAL SAFETY IS PROVIDED FOR BY USING SAFETY PRACTICES, PROCEDURES AND EQUIPMENT AS DESCRIBED IN THE SAFETY TRAINING PROGRAMS, MANUALS AND SPARS.  
INTERNAL INFORMATION: DO NOT COPY OR DISTRIBUTE WITHOUT EXPRESS WRITTEN CONSENT FROM XCEL ENERGY

**CIRCUIT 7251** **345 kV**  
STRUCTURE DRAWING - TANGENT - STEEL - D.C. - SINGLE POLE  
TANGENT, V-STRING, VERTICAL, ON FOUNDATION

**SWSAHQZ1-1** SCALE: AS NOTED REV: 0

REV	DATE	WBS 4	REVISION DESCRIPTION
0	10/26/2021	A.0001672.004.001.003	IFC - INSTALLATION OF 345KV TRANSMISSION LINE

5330.1-345-4.DGN

8/2/2021 8:29:25 AM

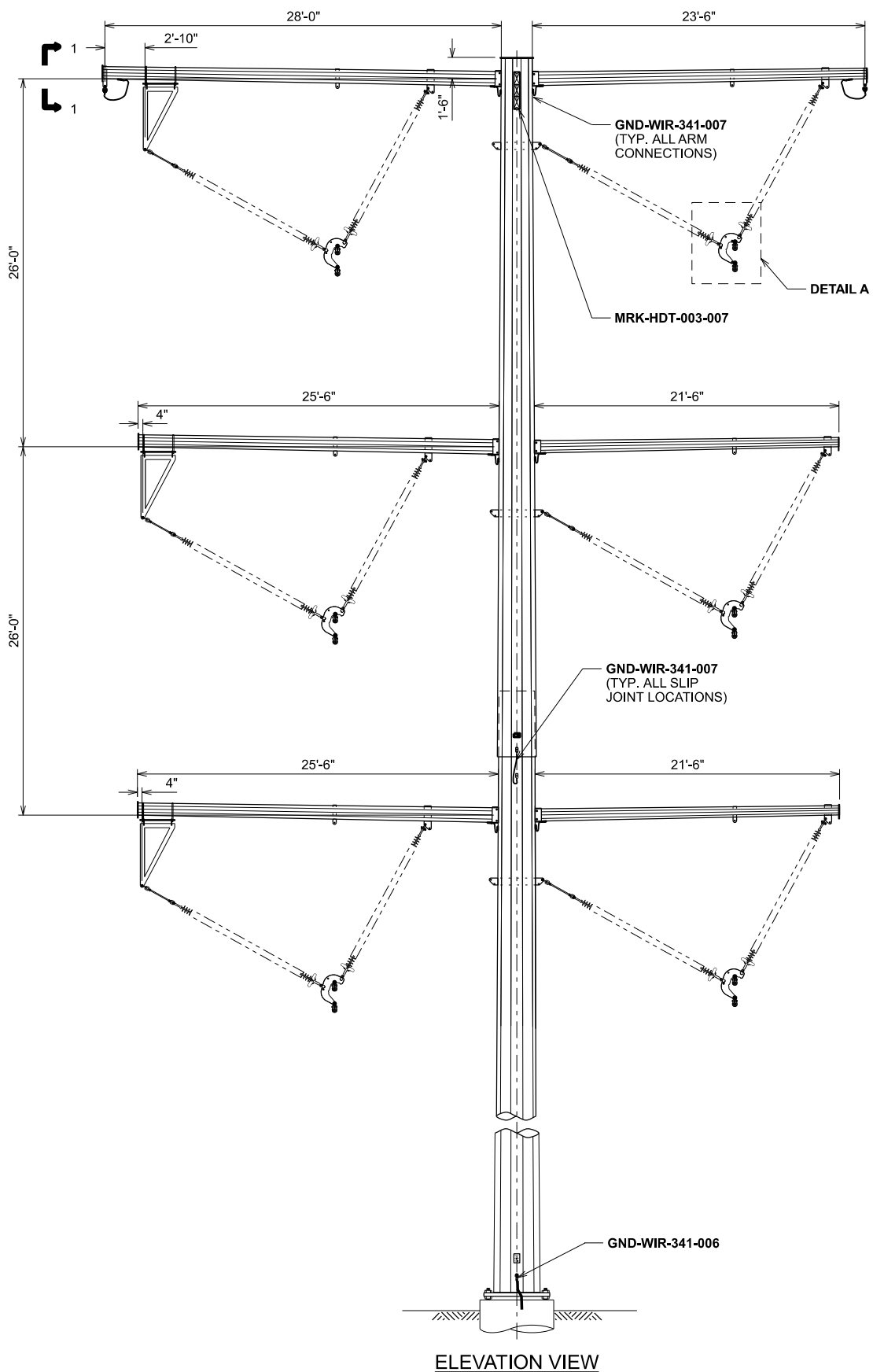
# ANGLE STRUCTURE

ASSEMBLY  
STR SWSAHQZ2-P1  
FOR STEEL POLES  
LD T366C028

QTY	SUBASSEMBLIES
2	FIT-CGS-057-001
6	FIT-CGS-050-001
2	GND-WIR-015-022
1	GND-WIR-341-006
8	GND-WIR-341-007
3	INY-VST-020-001
1	MRK-HDT-003-007
4	SWR-DMP-089-001

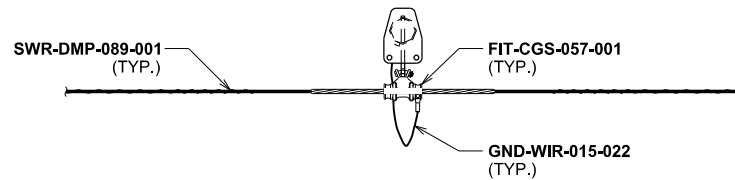
ASSEMBLY  
STR SWSAHQZ2-P2  
FOR STEEL POLES  
LD T366C028

QTY	SUBASSEMBLIES
6	FIT-CGS-050-001
3	INY-VST-020-001

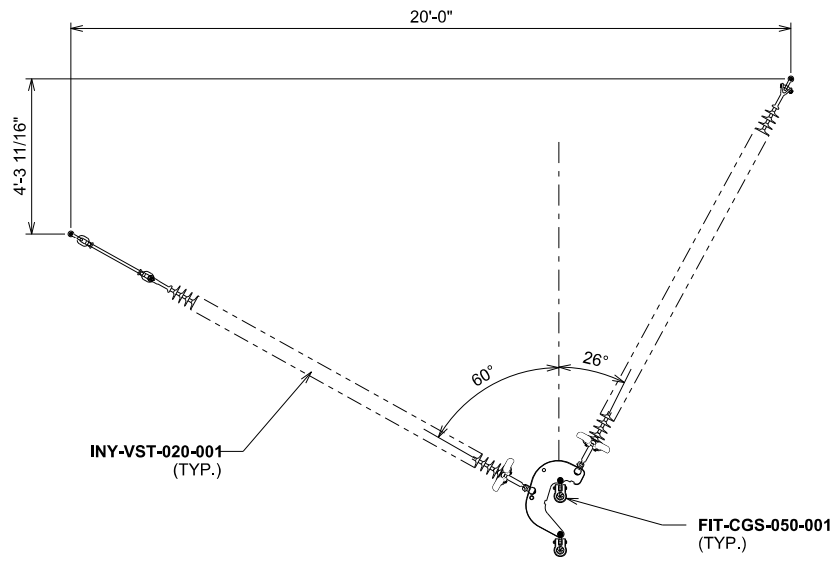


ELEVATION VIEW

STRUCTURE SHOWN IS RIGHT  
(POSITIVE) ANGLE CONFIGURATION -  
ROTATE 180° FOR LEFT  
(NEGATIVE) ANGLE CONFIGURATION



SECTION 1-1  
OPGW  
SCALE: NONE  
TYPICAL BOTH SIDES



DETAIL A  
CONDUCTOR SUSPENSION  
SCALE: NONE

**NOTE:**  
1. TWO SLIP JOINTS ASSUMED FOR BONDING SUBASSEMBLY  
GND-WIR-341-007 QUANTITY ON THIS TYPICAL DRAWING.  
ADDITIONAL QUANTITY WILL BE PROVIDED FOR POLES  
WITH MORE THAN TWO JOINTS.

**DRAWING REFERENCE**  
PLAN & PROFILE \_\_\_\_\_ T366G001  
SUBASSEMBLY INDEX \_\_\_\_\_ T366X001

ELEVATION: <7,300 FT

ISSUED BY ENGINEERING DEPT FOR: CONSTRUCTION

THIS MAP/DRAWING IS A TOOL TO ASSIST EMPLOYEES IN THE PERFORMANCE OF THEIR JOBS. YOUR PERSONAL SAFETY IS PROVIDED FOR BY USING SAFETY PRACTICES, PROCEDURES AND EQUIPMENT AS DESCRIBED IN THE SAFETY TRAINING PROGRAMS, MANUALS AND SPARS.  
INTERNAL INFORMATION: DO NOT COPY OR DISTRIBUTE WITHOUT EXPRESS WRITTEN CONSENT FROM XCEL ENERGY

CIRCUIT 7251 345 kV  
STRUCTURE DRAWING - ANGLE - STEEL - D.C. - SINGLE POLE  
2-5 DEGREE, V-STRING, VERTICAL, RUNNING ANGLE

XcelEnergy® SWSAHQZ2-1 SCALE AS NOTED REV 0

REV	DATE	WBS 4	REVISION DESCRIPTION
0	10/26/2021	A.0001672.004.001.003	IFC - INSTALLATION OF 345KV TRANSMISSION LINE

5340.1-345-18.DGN 8/18/2021 11:50:49 AM



**Representative Substation**



**Representative Transmission Line**

# **COLORADO'S POWER PATHWAY**

## **ARAPAHOE COUNTY VISUAL SIMULATIONS**

# KOP 1: QUINCY AVE + QUINCY AVE DIVERSION TO RIDGE VIEW SCHOOL



EXISTING CONDITION

PRINT GUIDE / IMAGE NOTES:  
 This sheet should be printed at 11 by 17 inches; full size with no scaling; and viewed at 10 inches. If viewed on a computer monitor, the document should be scaled to 100 percent and viewed at 10 inches away.



## KEY LOCATION MAP

Viewpoint Number:	1
Viewpoint Location:	Quincy Ave + Quincy Ave
Date of Photograph:	4/11/2022
Time of Photograph:	1:25PM (MST)
Latitude:	39.638210° N
Longitude:	-104.659992° W
Viewing Direction:	East
Weather Condition:	Partly Cloudy
Ground Elevation + Camera Height:	5.5 feet

IMAGE DATA

# KOP 1: QUINCY AVE + QUINCY AVE DIVERSION TO RIDGE VIEW SCHOOL



PRINT GUIDE / IMAGE NOTES:  
This sheet should be printed at 11 by 17 inches; full size with no scaling; and viewed at 10 inches. If viewed on a computer monitor, the document should be scaled to 100 percent and viewed at 10 inches away.



## KEY LOCATION MAP

Viewpoint Number:	1
Viewpoint Location:	Quincy Ave + Quincy Ave
Date of Photograph:	4/11/2022
Time of Photograph:	1:25PM (MST)
Latitude:	39.638210° N
Longitude:	-104.659992° W
Viewing Direction:	East
Weather Condition:	Partly Cloudy
Ground Elevation + Camera Height:	5.5 feet

SIMULATED CONDITION

IMAGE DATA

# KOP 2: QUINCY AVE + MANILA RD



PRINT GUIDE / IMAGE NOTES:  
This sheet should be printed at 11 by 17 inches; full size with no scaling; and viewed at 10 inches. If viewed on a computer monitor, the document should be scaled to 100 percent and viewed at 10 inches away.



## KEY LOCATION MAP

Viewpoint Number:	2
Viewpoint Location:	Quincy Ave at Manila Rd
Date of Photograph:	4/11/2022
Time of Photograph:	11:43AM (MST)
Latitude:	39.637235° N
Longitude:	-104.528959° W
Viewing Direction:	West
Weather Condition:	Partly Cloudy
Ground Elevation + Camera Height:	5.5 feet

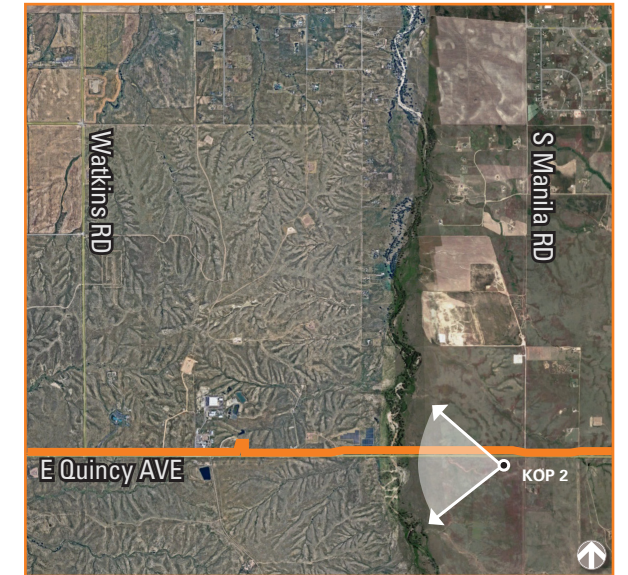
## EXISTING CONDITION

## IMAGE DATA

# KOP 2: QUINCY AVE + MANILA RD



**PRINT GUIDE / IMAGE NOTES:**  
This sheet should be printed at 11 by 17 inches; full size with no scaling; and viewed at 10 inches. If viewed on a computer monitor, the document should be scaled to 100 percent and viewed at 10 inches away.



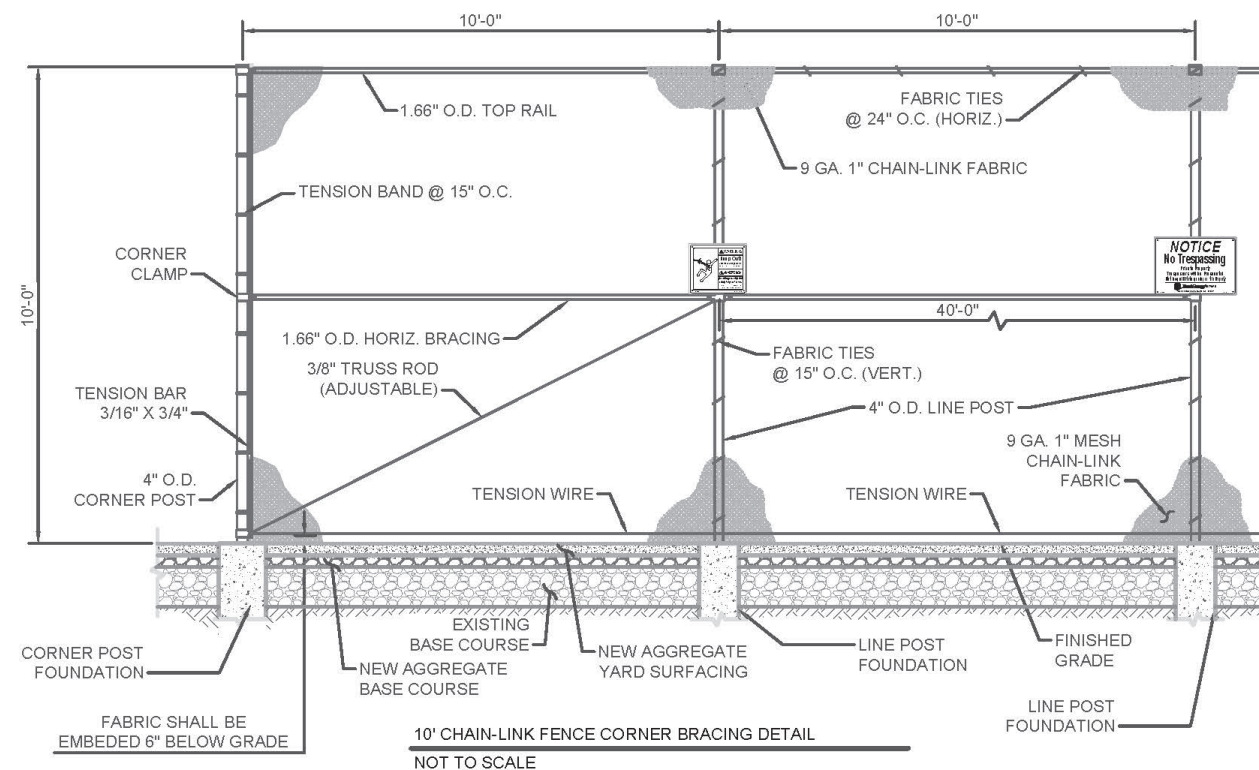
## KEY LOCATION MAP

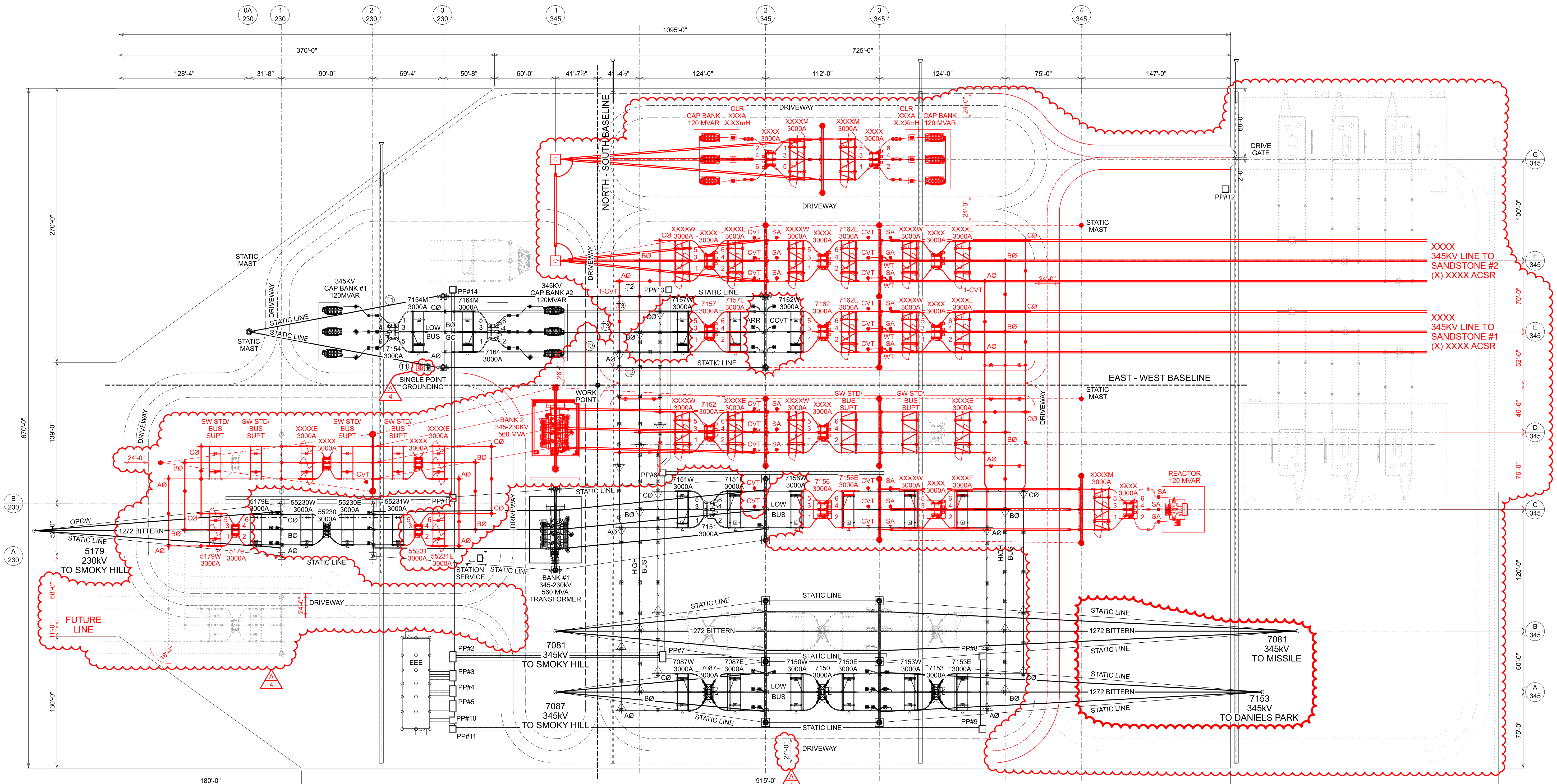
Viewpoint Number:	2
Viewpoint Location:	Quincy Ave at Manila Rd
Date of Photograph:	4/11/2022
Time of Photograph:	11:43AM (MST)
Latitude:	39.637235° N
Longitude:	-104.528959° W
Viewing Direction:	West
Weather Condition:	Partly Cloudy
Ground Elevation + Camera Height:	5.5 feet

**SIMULATED CONDITION**

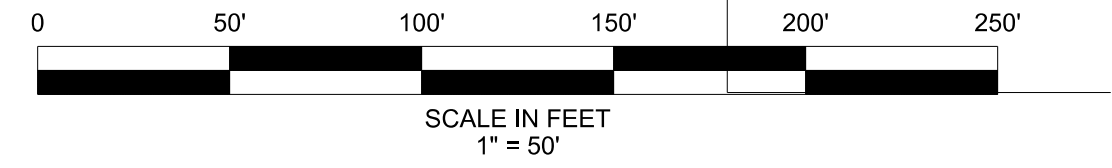
**IMAGE DATA**

**REPRESENTATIVE FENCE PHOTOGRAPHS & DETAIL**





PRELIMINARY  
NOT FOR CONSTRUCTION



ISSUED BY ENGINEERING DEPT FOR: **PRELIMINARY**  
THIS MAP/DOCUMENT IS A TOOL TO ASSIST EMPLOYEES IN THE PERFORMANCE OF THEIR JOBS. YOUR PERSONAL SAFETY IS PROVIDED FOR BY USING SAFETY PRACTICES, PROCEDURES AND EQUIPMENT AS DESCRIBED IN THE SAFETY TRAINING PROGRAMS, MANUALS AND SPARS. INTERNAL INFORMATION. DO NOT COPY OR DISTRIBUTE WITHOUT EXPRESS WRITTEN CONSENT FROM XCEL ENERGY.

**HARVEST MILE**  
 GENERAL ARRANGEMENT  
 345/230KV PLAN

**HMIL**

Xcel Energy 0950-001.001S01-v.4 SCALE 1"=50'-0" REV 1

REV	DATE	WBS #	REVISION DESCRIPTION	REV	DATE	WBS #	REVISION DESCRIPTION	REV	DATE	WBS #	REVISION DESCRIPTION
0	20210122			0	20210122		PRELIMINARY - HARVEST MILE - 345V ERP				
1	20210224			1	20210224		PRELIMINARY - UPDATED STATION NAMES				

0950-001.001S01-v.4.DWG 4/5/2023 9:53:46 AM