



ARAPAHOE COUNTY  
OPEN SPACES

# Arapahoe County Eastern Plains and CSU Extension Integration



## **Department Funding:**

- Open Spaces Program began in 2003
- Quarter of a penny Open Space Sales and Use Tax (equal to 25 cents on every \$100 spent in the County)
- Voter approved for 10 years
- 2011 the tax was reauthorized to 2023
- CSU Extension is supported by the General Fund and the University

## **What we do:**

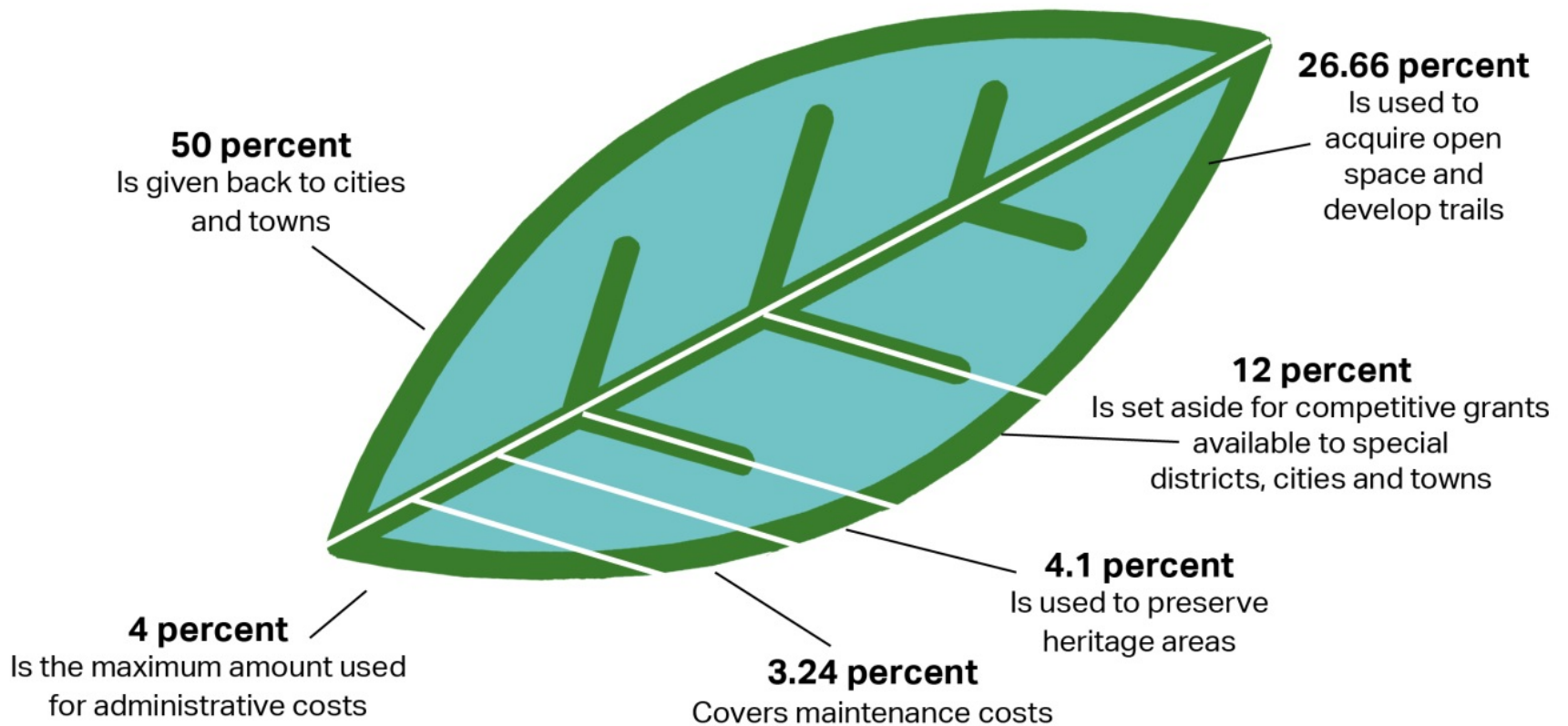
- Preserve natural and heritage areas
- Enhance neighborhood and regional parks
- Build and maintain trails

## **Since 2003, we have:**

- Conserved more than 31,000 acres of open space
- Built more than 73 miles of new trails
- Supported more than 150 park and trailhead projects



## Open Spaces Fund Allocations

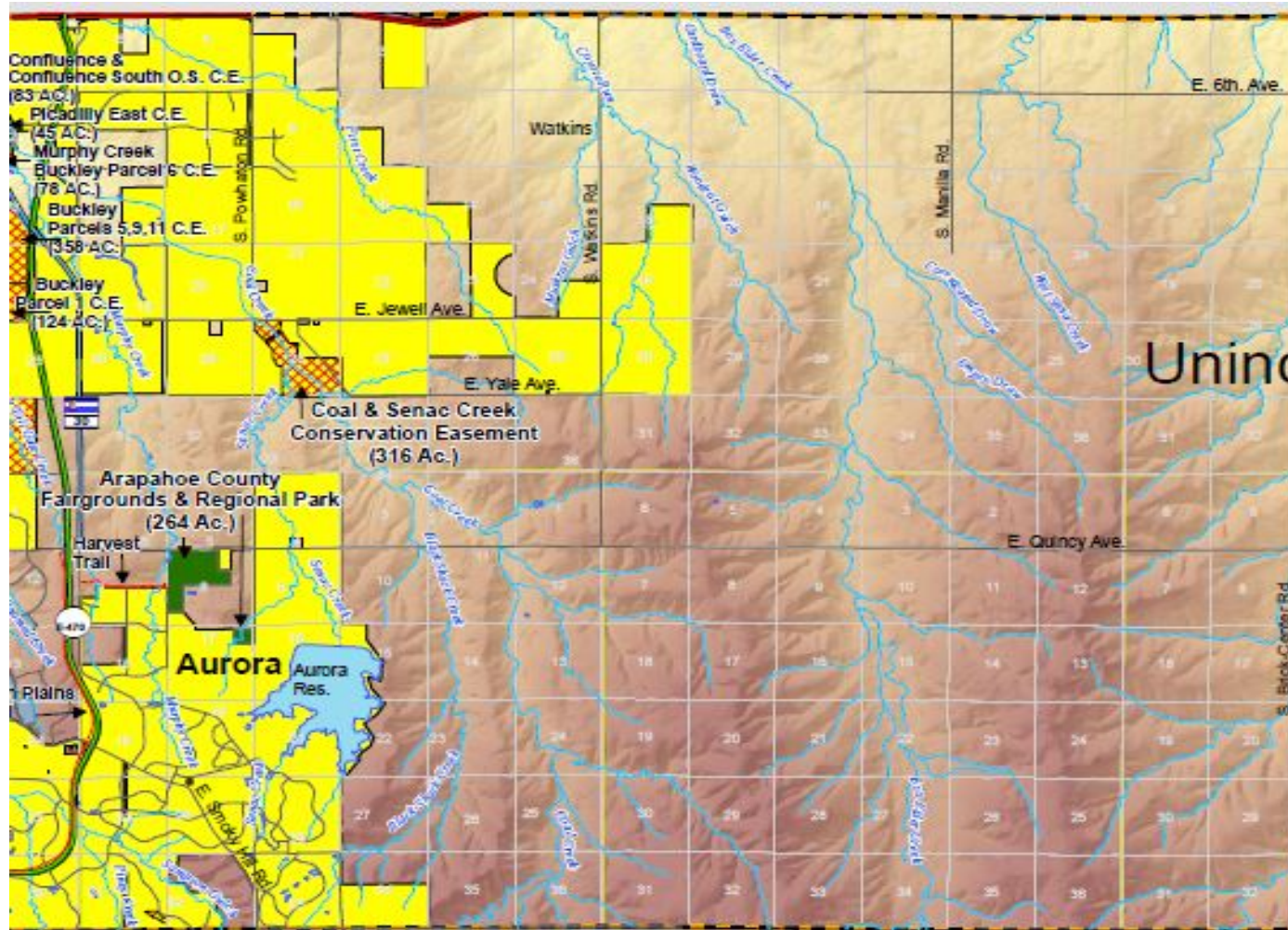




[illegible]



## Western Portion, Eastern Plains





## Fairgrounds and Park

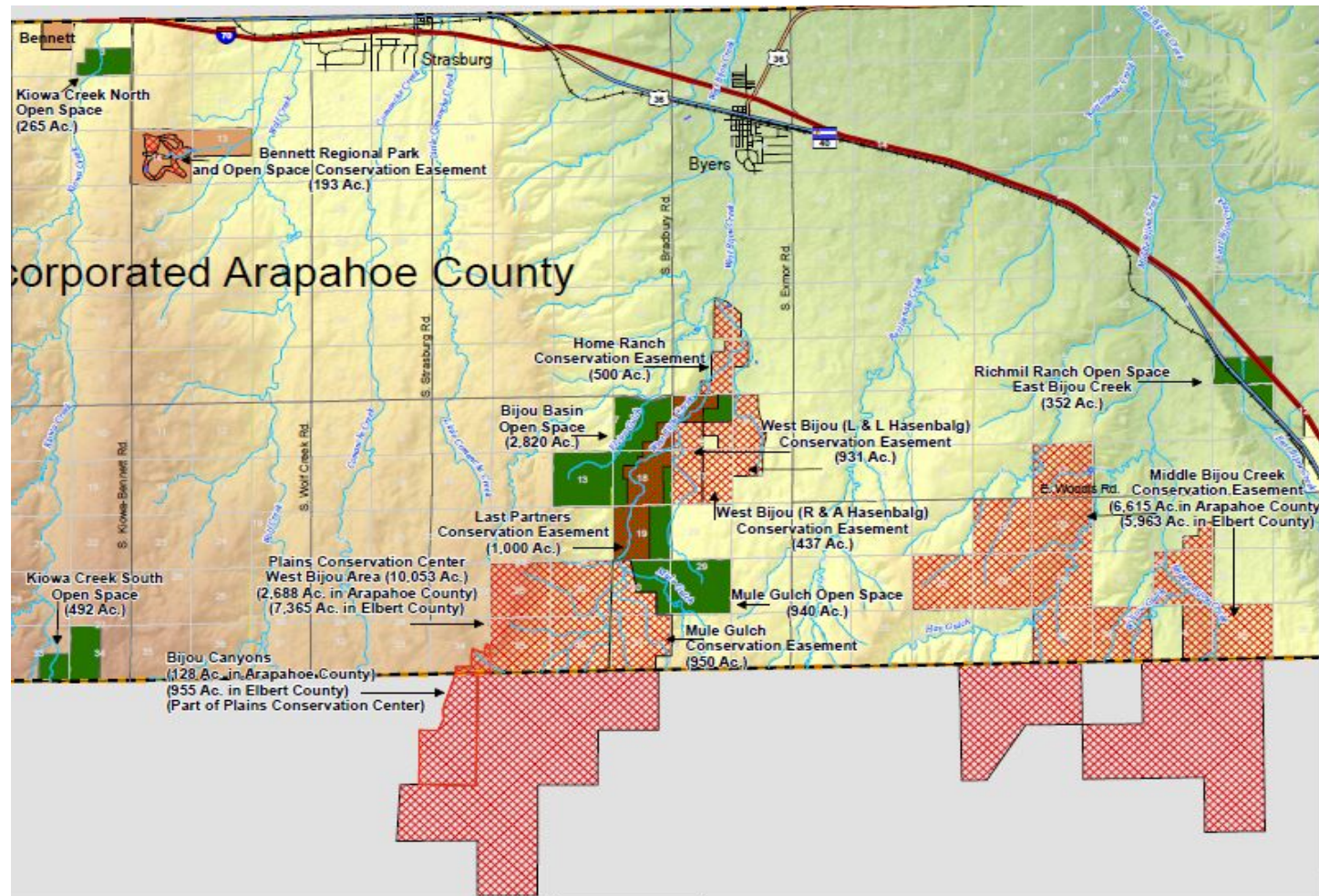


- 264 acres
- loop trail, shade pavilion, natural play areas, central green lawn
- 2019 Event Center 85,800 visitors
- Future acquisition at Quincy and Harvest, remnant parcel





## Central Portion, Eastern Plains





## Kiowa Creek South



- 492 acres
- Aging barn, horse corrals, several grazing units, wheat field, and riparian area with an intermittent creek
- Leased by a local rancher, average of \$3,000 dollars in annual revenue





## Kiowa Creek North



- 265 acres
- Several grazing units and riparian area, potential Town of Bennet trail underpass
- Oil/gas lease pad site mitigation
- Leased by a local rancher generating an average of \$2,800 dollars in annual revenue
- The property is currently under the design phase for initial development





## Bijou Basin Open Space



- 2,820 acres
- Expansive short grass prairie, unique geological features, wide riparian area, numerous grazing units, two dryland farming fields, established ranch roads
- Site is leased by a local rancher and farmer, generating between \$10,000 to \$18,000 dollars in annual market-based revenue
- The property is available for permitted public use and is adjacent to other conserved lands





## Mule Gulch Open Space



- 940 acres
- Dryland wheat fields under production by a local lessee, a riparian area with intermittent creek, adjacent to other conserved lands.
- Local farmer shares crop production profits with the County, generating between \$8,000 to \$14,000 dollars in annual revenue depending on crop production and market values.





## Richmil Ranch Open Space



- 352 acres
- Two irrigated farming fields, a loop trail system, accessible parking, picnic pavilion, restroom
- Future expansion of the parking lot for additional equestrian parking
- Trail use counts logged 6,000 visitors in 2020
- Site is leased by a local rancher, generating \$1,000 dollars in annual revenue





## Conservation Easements, Eastern Plains

- Coal and Senac Creek (316 acres)
- Bennett Regional Park and Open Space (193 acres)
- Home Ranch (500 acres)
- West Bijou-L&L Hasenbalg (931 acres)
- West Bijou-R&A Hasenbalg (437 acres)
- Bijou Canyons (128 acres)
- Last Partners (1,000 acres)
- Plains Conservation Center (2,688 acres)
- Mule Gulch (950 acres)





# Empowering Arapahoe County Communities

---

Arapahoe County Extension

January 26, 2021



**COLORADO STATE UNIVERSITY  
EXTENSION**



**ARAPAHOE COUNTY  
OPEN SPACES**

FIND YOUR SPACE

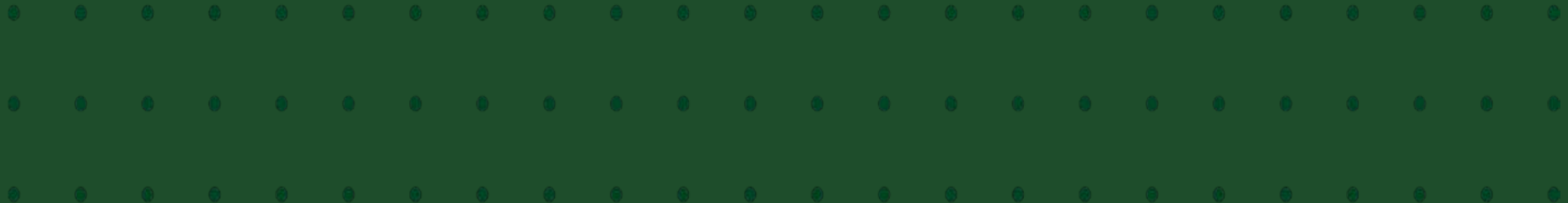






## Mission Statement:

Empower Coloradans to address important and emerging community issues using dynamic, science-based educational resources.

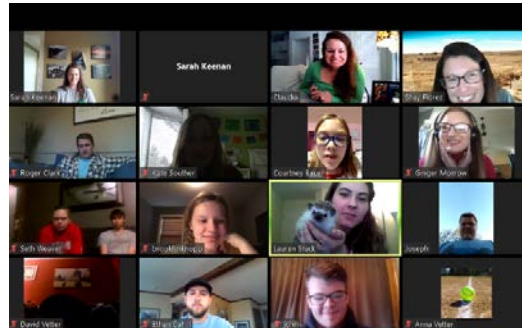






# What is CSU Extension?

- Land grant universities established by the Morrill Act in 1863
- Extension established in 1914
- Local offices in almost every county
- Community needs drive our work- **CNA**







# Arapahoe County Extension

Program areas below. \*\*\* indicates near-term OS/CSUE collaboration opportunities.

## 4-H Youth Dev't \*\*\* (clubs/outreach)

Ethan Cahill

Shay Florez

Claudia Meeks



## Energy

Tim Aston



## Expanded Food + Nutrition Education Program (EFNEP)

Nancy Silva



## Family and Consumer Sciences (FCS)

Sheila Gains



## Family Leadership Training Institute (FLTI)

Taylor Knickel

Briana Gonzales



## Horticulture/Colorado Master Gardener \*\*\*

Lisa Mason

Lucinda Greene

Martha Kirk



## Office Support

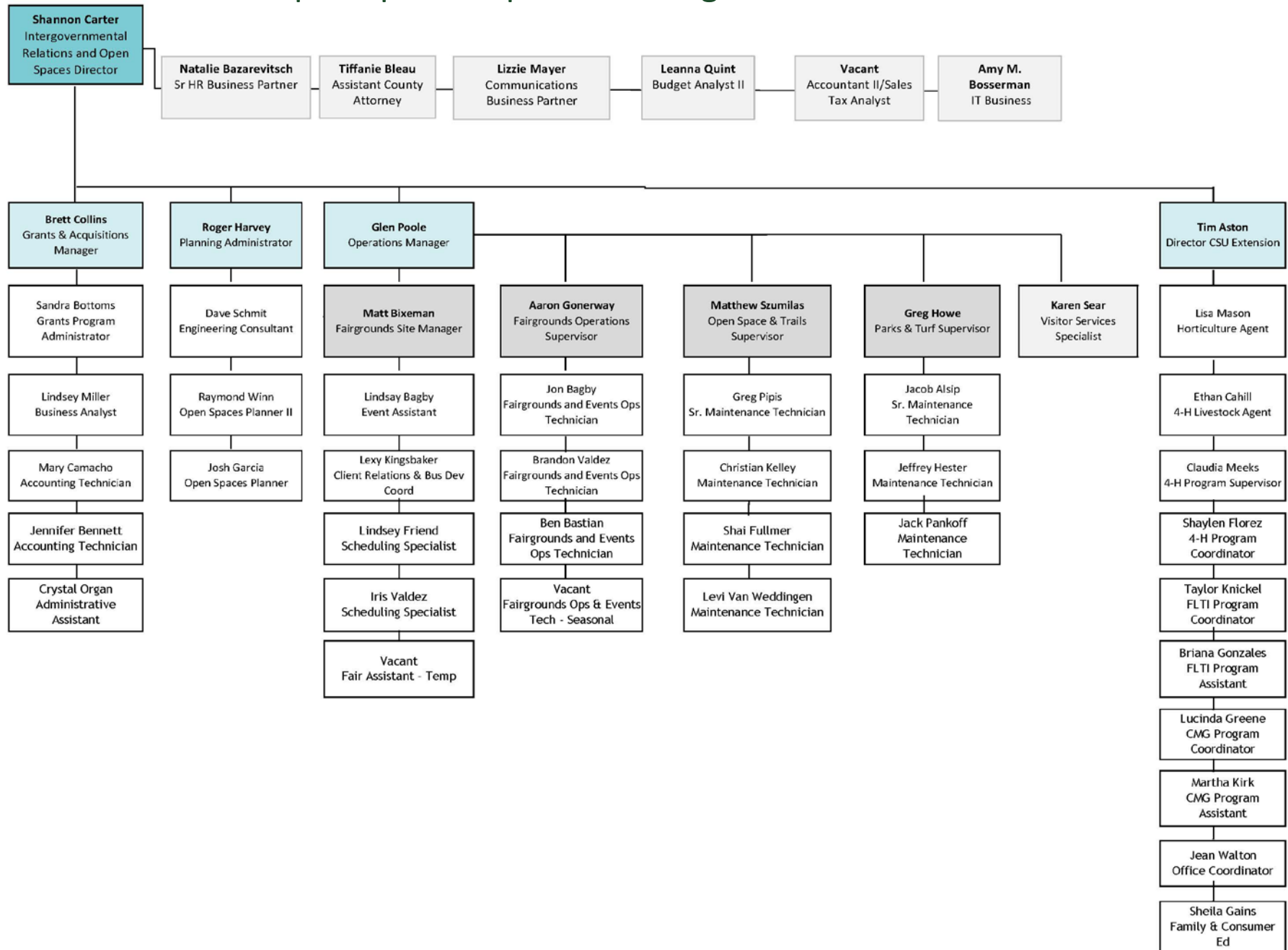
Jean Walton

Briana Gonzales





# New Open Space Department Organizational Chart







Questions / Comments ?