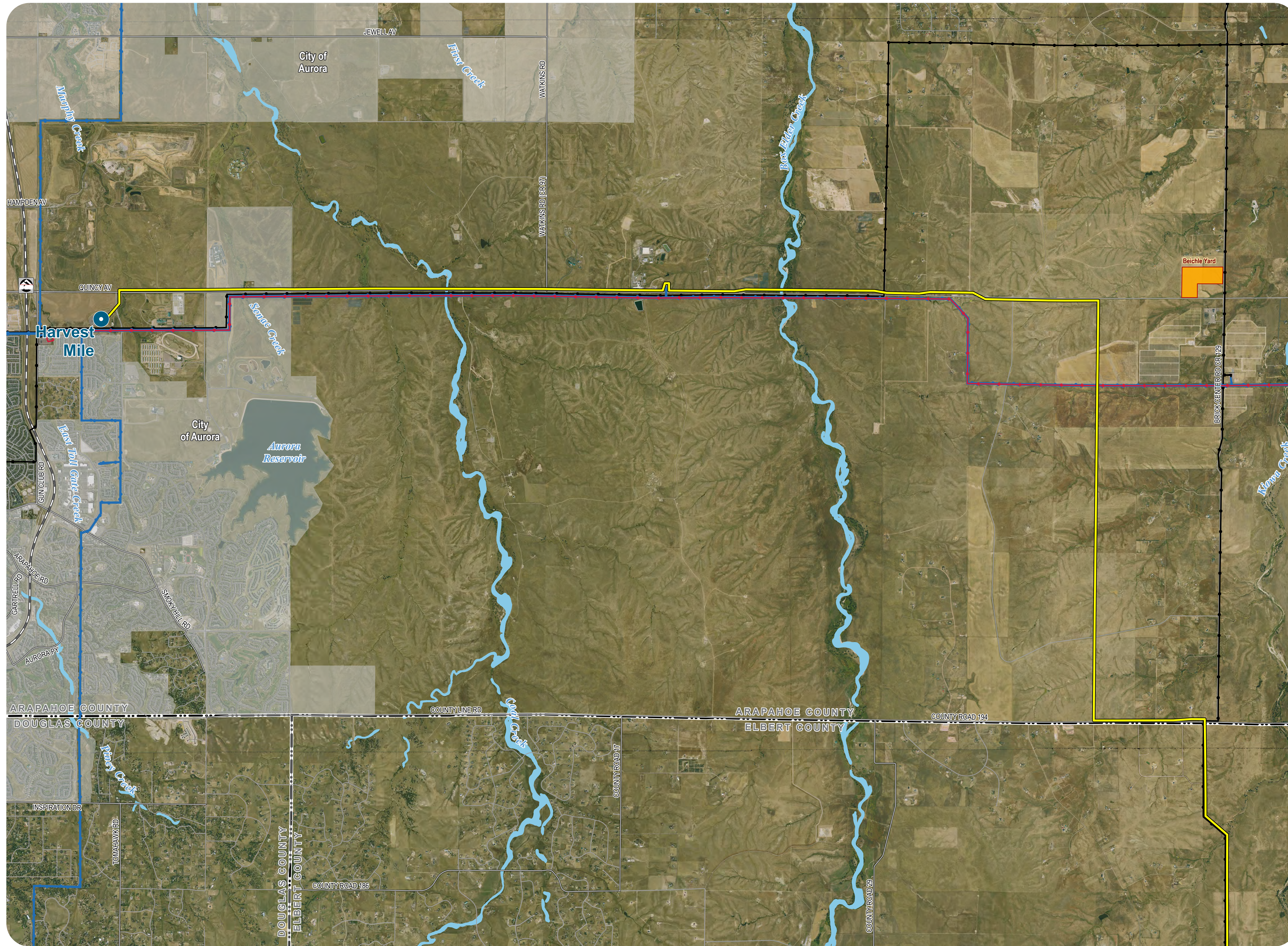


# COLORADO'S POWER PATHWAY



## Legend

- Existing Substation
- Proposed Transmission Route
- Laydown Yard

## Existing Electric Infrastructure (HIFLD 2021)

- 115kV Transmission Line
- 230kV Transmission Line
- 345kV Transmission Line

## Transportation (CDOT 2021, BTS 2020)

- Interstate
- U.S. Highway
- State Highway
- Local Road
- Railroad

## Boundary (CDOT 2021, DOLA 2021)

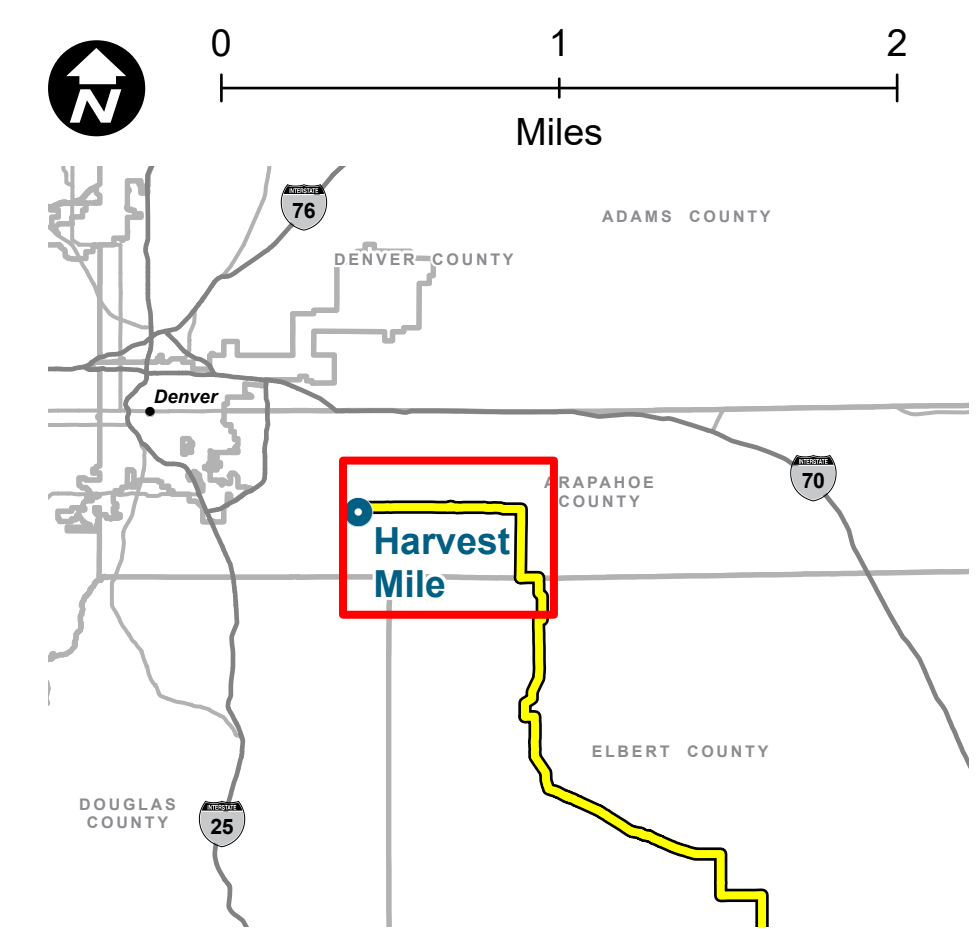
- Municipal Boundary
- County

## Hydrology (NHD 2020)

- Waterbody

NAIP Imagery 2023

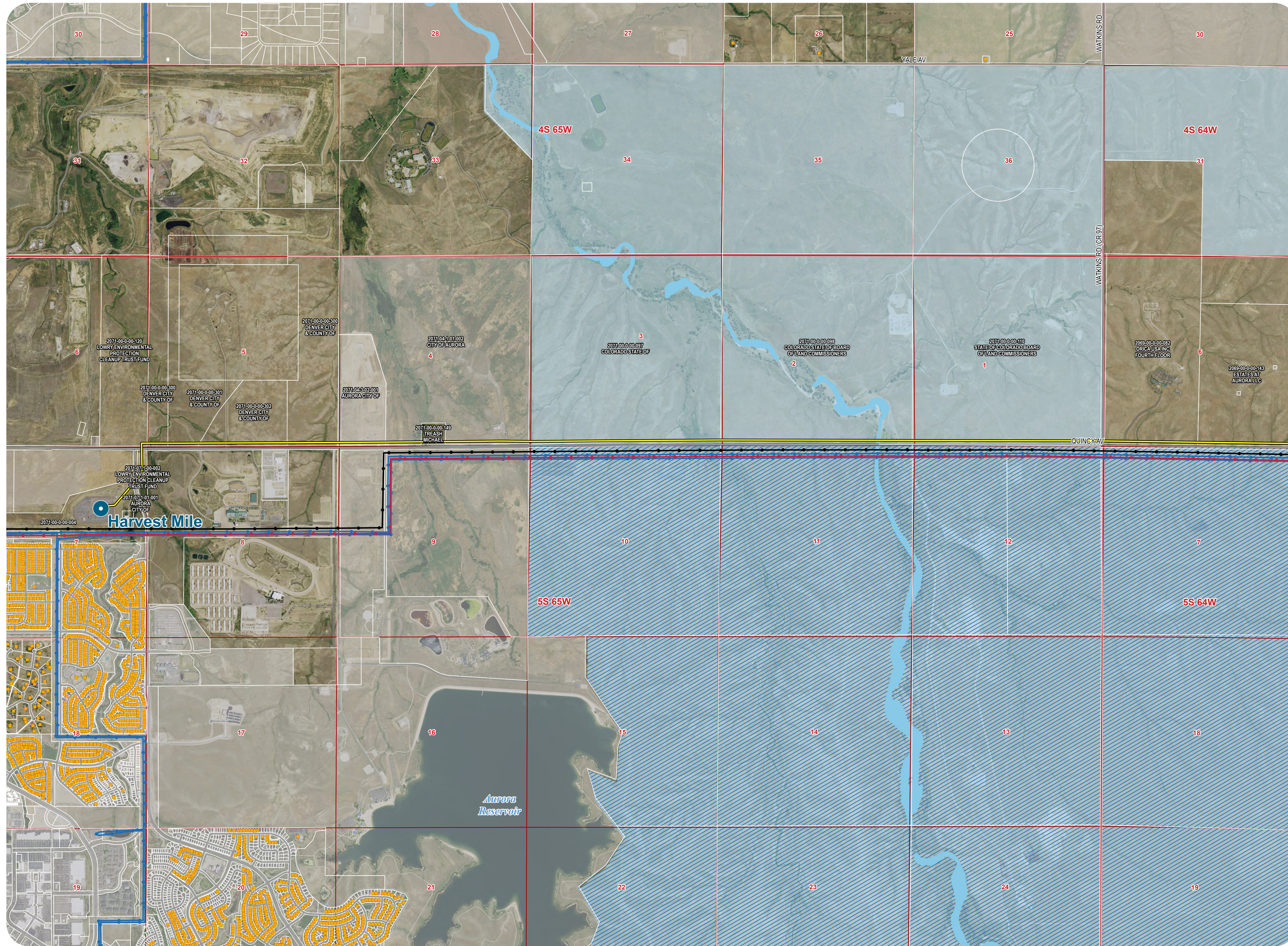
**PRELIMINARY, SUBJECT TO CHANGE**  
 The information contained herein is believed to be accurate and suitable for limited internal uses only. Xcel Energy/Public Service Company of Colorado makes no warranty as to the accuracy or suitability of any information contained herein for use by third parties. The accuracy of this map and the information depicted should be verified prior to use. The user shall assume all risk and responsibility for any and all damages, including consequential damages, which may arise from the user's reliance on this information.



Revised: 3/4/2025 | NOT FOR CONSTRUCTION  
 Path: Z:\1163\_0039\_CO\_Pathway\_Permits\GIS\Layouts\Permitting\Arapahoe\_Co\Arapahoe\_Co\_Permit.aprx

Vicinity Map

# COLORADO'S POWER PATHWAY



### Legend

- Existing Substation
- Proposed Transmission Route
- Residence (Microsoft 2019, review of NAIP aerial)

### Existing Electric Infrastructure (HIFLD 2021)

- 69kV Transmission Line
- 115kV Transmission Line
- 230kV Transmission Line
- 345kV Transmission Line

### Transportation (CDOT 2021, BTS 2020)

- Interstate
- U.S. Highway
- State Highway
- Local Road
- Railroad

### Boundary (CDOT 2021, DOLA 2021)

- Municipal Boundary
- County

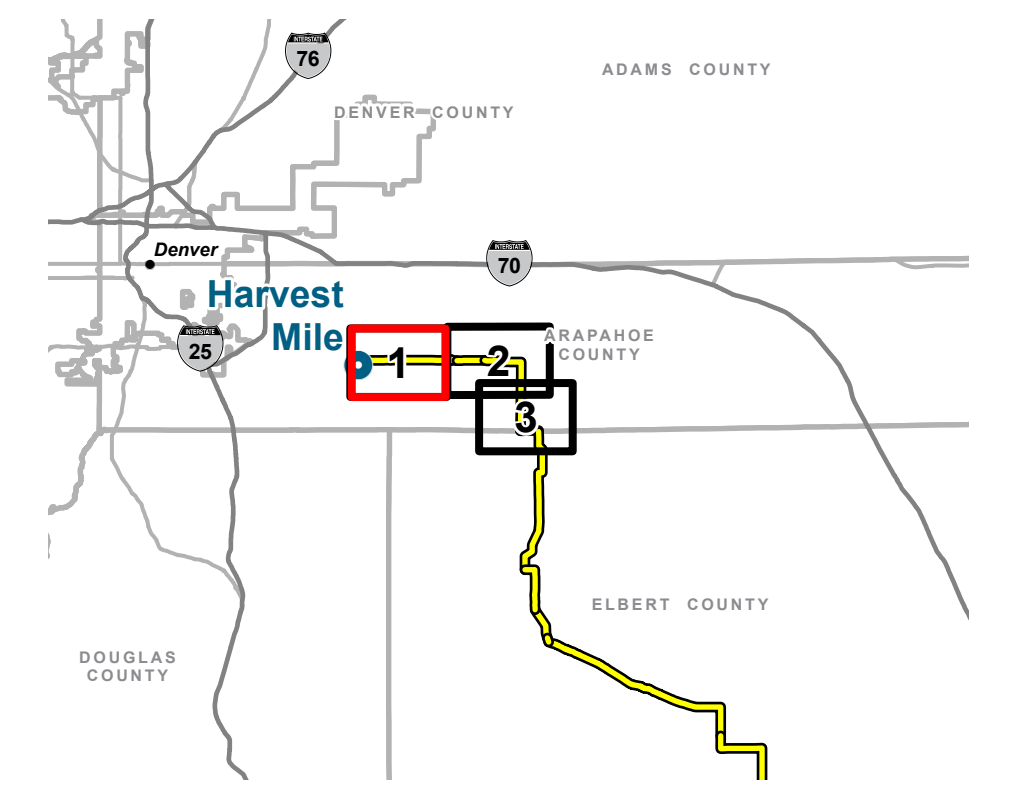
### Jurisdiction (COMap 2021)

- Stewardship Trust Land
- State
- Conservation Easement

### Public Land Survey System (BLM 2020)

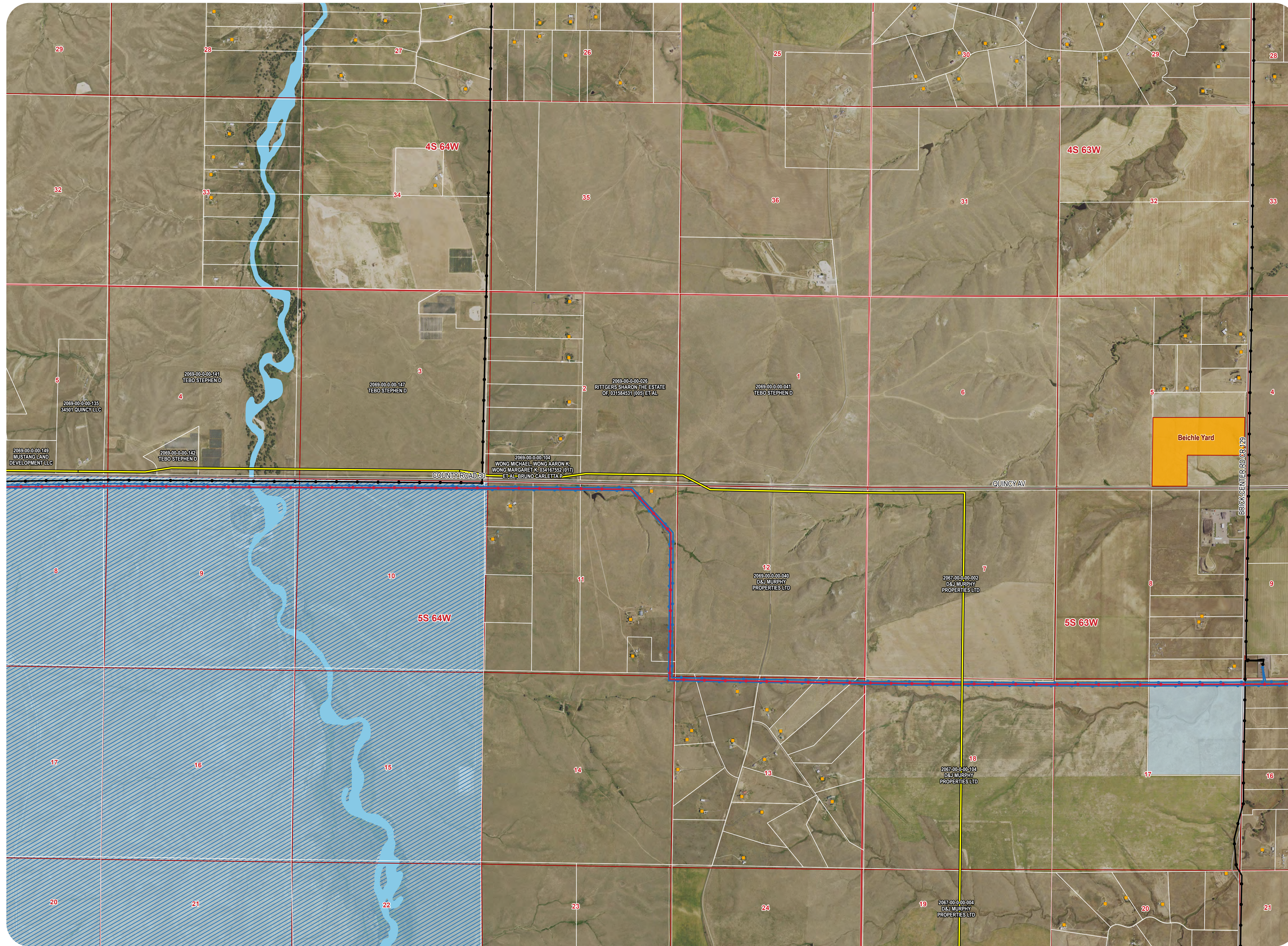
- Section
- Township/Range

**PRELIMINARY, SUBJECT TO CHANGE**  
 The information contained herein is believed to be accurate and suitable for limited internal uses only. Xcel Energy/Public Service Company of Colorado makes no warranty as to the accuracy or suitability of any information contained herein for use by third parties. The accuracy of this map and the information depicted should be verified prior to use. The user shall assume all risk and responsibility for any and all damages, including consequential damages, which may arise from the user's reliance on this information.



Revised: 3/4/2025 | NOT FOR CONSTRUCTION  
 Path: Z:\1163\_0039\_CO\_Pathway\_Permit\GIS\Layouts\Permitting\Arapahoe\_Co\Arapahoe\_Co\_Permit.aprx

# COLORADO'S POWER PATHWAY



**Legend**

- Existing Substation
- Proposed Transmission Route
- Residence (Microsoft 2019, review of NAIP aerial)
- Laydown Yard

**Existing Electric Infrastructure (HIFLD 2021)**

- 69kV Transmission Line
- 115kV Transmission Line
- 230kV Transmission Line
- 345kV Transmission Line

**Transportation (CDOT 2021, BTS 2020)**

- Interstate
- U.S. Highway
- State Highway
- Local Road
- Railroad

**Boundary (CDOT 2021, DOLA 2021)**

- Municipal Boundary
- County

**Jurisdiction (COMap 2021)**

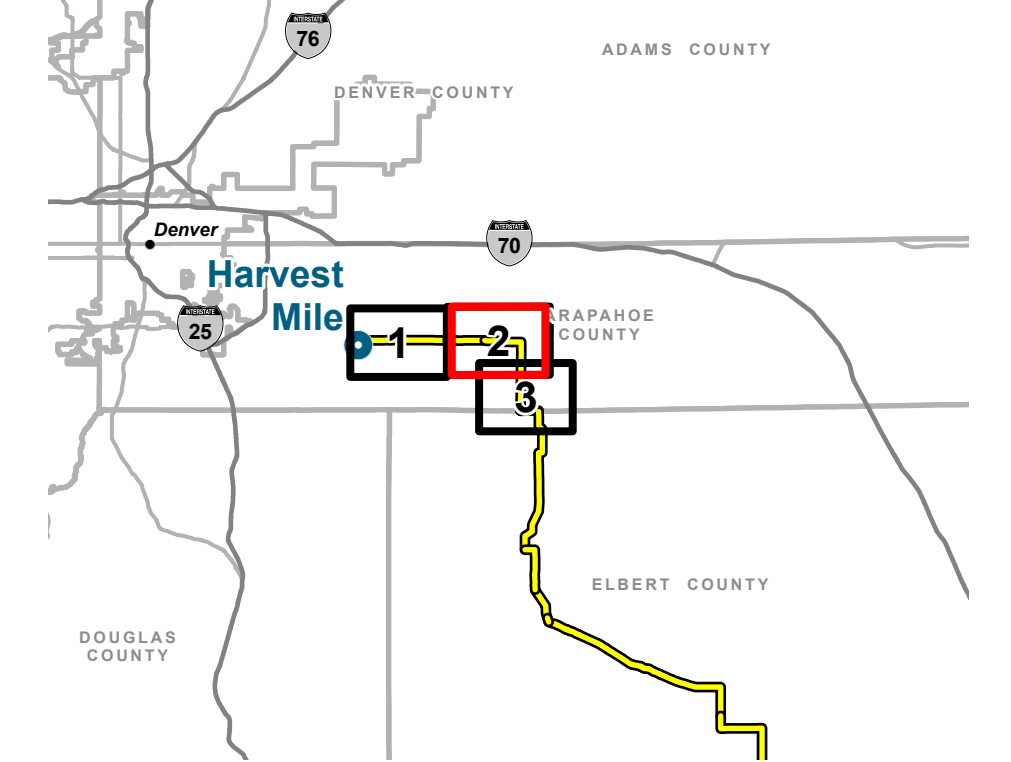
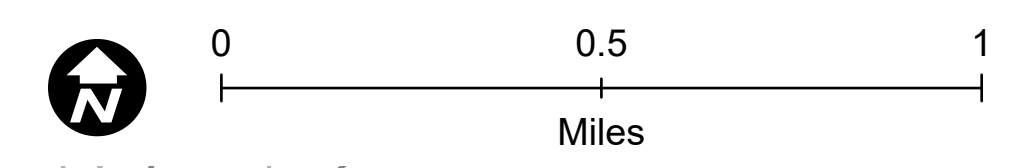
- Stewardship Trust Land
- State
- Conservation Easement

**Public Land Survey System (BLM 2020)**

- Section
- Township/Range

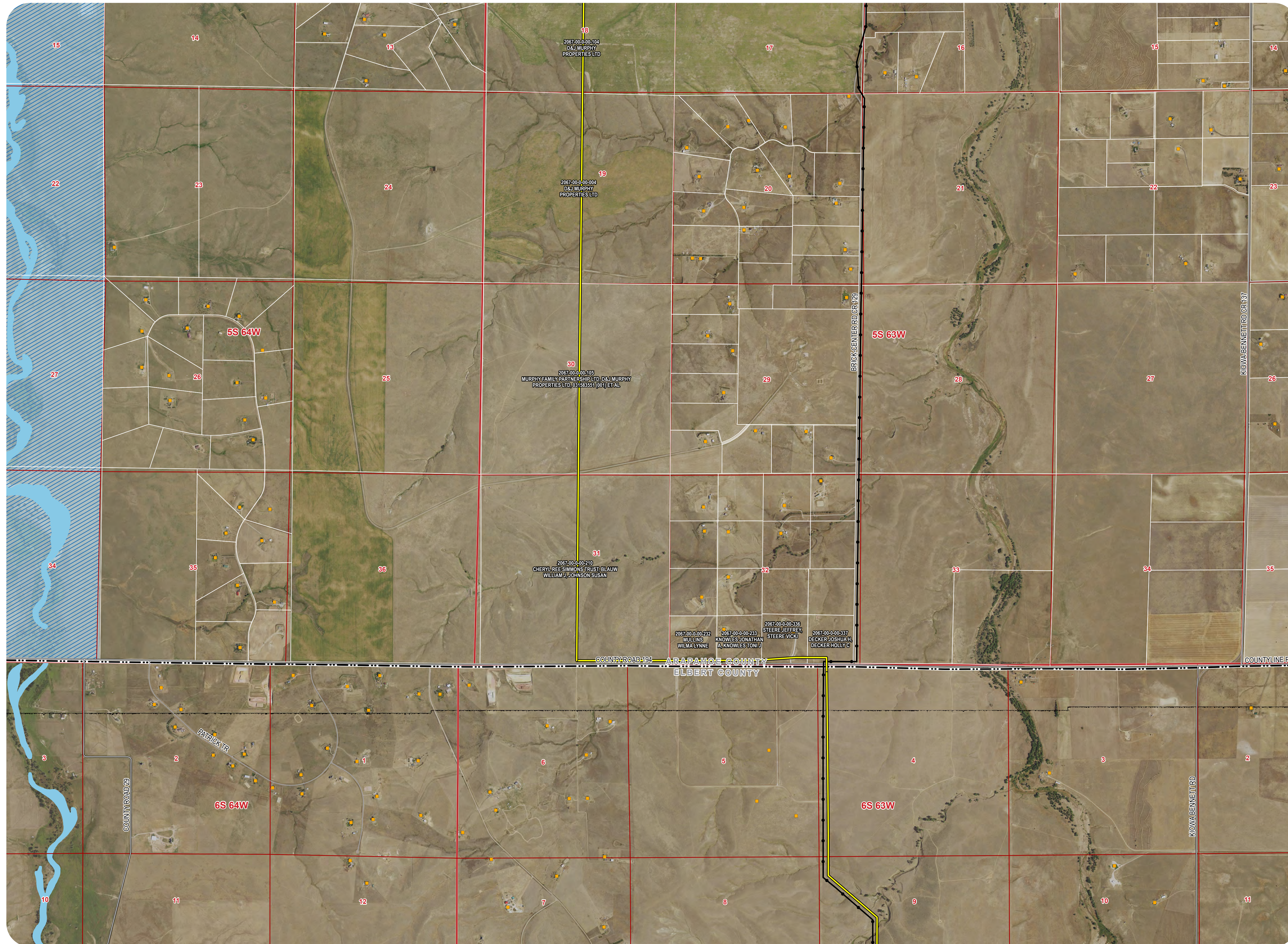
**PRELIMINARY, SUBJECT TO CHANGE**

The information contained herein is believed to be accurate and suitable for limited internal use only. Xcel Energy/Public Service Company of Colorado makes no warranty as to the accuracy or suitability of any information contained herein for use by third parties. The accuracy of this map and the information depicted should be verified prior to use. The user shall assume all risk and responsibility for any and all damages, including consequential damages, which may arise from the user's reliance on this information.



Revised: 3/4/2025 | NOT FOR CONSTRUCTION  
 Path: Z:\1163\_0039\_CO\_Pathway\_Permit\GIS\Layouts\Permitting\Arapahoe\_Co\Arapahoe\_Co\_Permit.aprx

# COLORADO'S POWER PATHWAY



**Legend**

- Existing Substation
- Proposed Transmission Route
- Residence (Microsoft 2019, review of NAIP aerial)

**Existing Electric Infrastructure (HIFLD 2021)**

- 69kV Transmission Line
- 115kV Transmission Line
- 230kV Transmission Line
- 345kV Transmission Line

**Transportation (CDOT 2021, BTS 2020)**

- Interstate
- U.S. Highway
- State Highway
- Local Road
- Railroad

**Boundary (CDOT 2021, DOLA 2021)**

- Municipal Boundary
- County

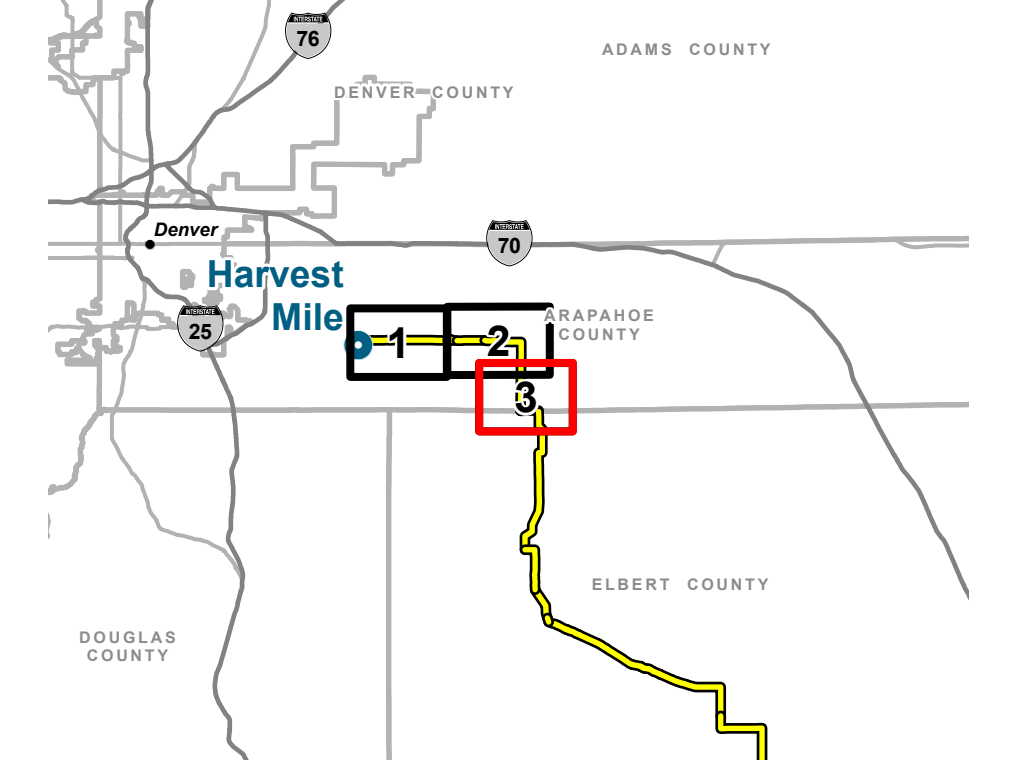
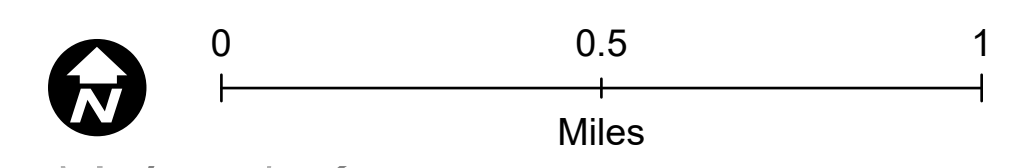
**Jurisdiction (COMap 2021)**

- Stewardship Trust Land
- State
- Conservation Easement

**Public Land Survey System (BLM 2020)**

- Section
- Township/Range

**PRELIMINARY, SUBJECT TO CHANGE**  
 The information contained herein is believed to be accurate and suitable for limited internal uses only. Xcel Energy/Public Service Company of Colorado makes no warranty as to the accuracy or suitability of any information contained herein for use by third parties. The accuracy of this map and the information depicted should be verified prior to use. The user shall assume all risk and responsibility for any and all damages, including consequential damages, which may arise from the user's reliance on this information.



Revised: 3/4/2025 | NOT FOR CONSTRUCTION  
 Path: Z:\1163\_0039\_CO\_Pathway\_Permit\GIS\Layouts\Permitting\Arapahoe\_Co\Arapahoe\_Co\_Permit.aprx