

Exhibit A High Plains Trail Overview Map

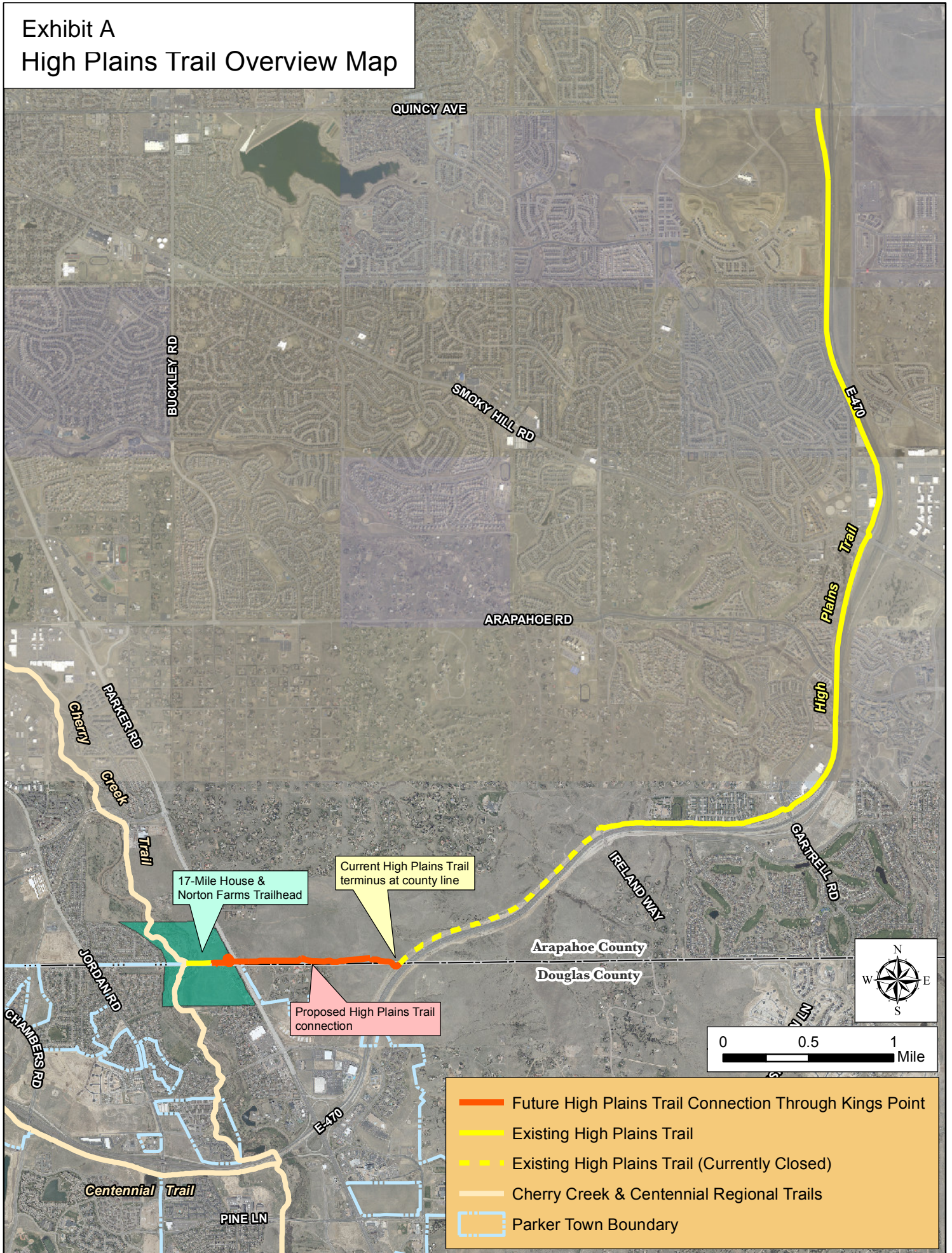
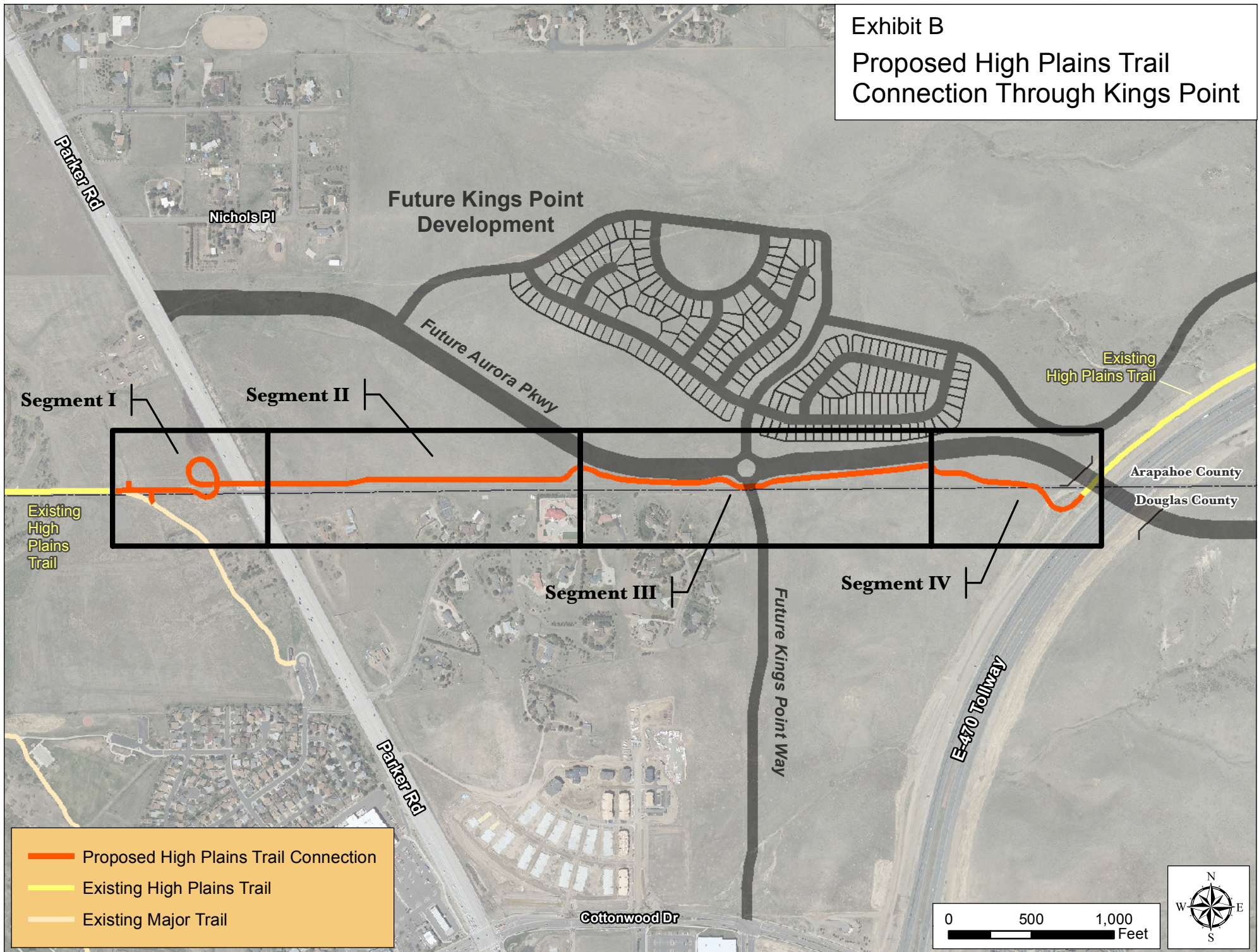


Exhibit B
Proposed High Plains Trail
Connection Through Kings Point



Segment I

Segment II

Segment III

Segment IV

Existing High Plains Trail

Existing High Plains Trail

Arapahoe County

Douglas County

- Proposed High Plains Trail Connection
- Existing High Plains Trail
- Existing Major Trail

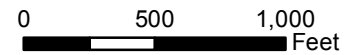


Exhibit C
IREA Guy-wire Easement

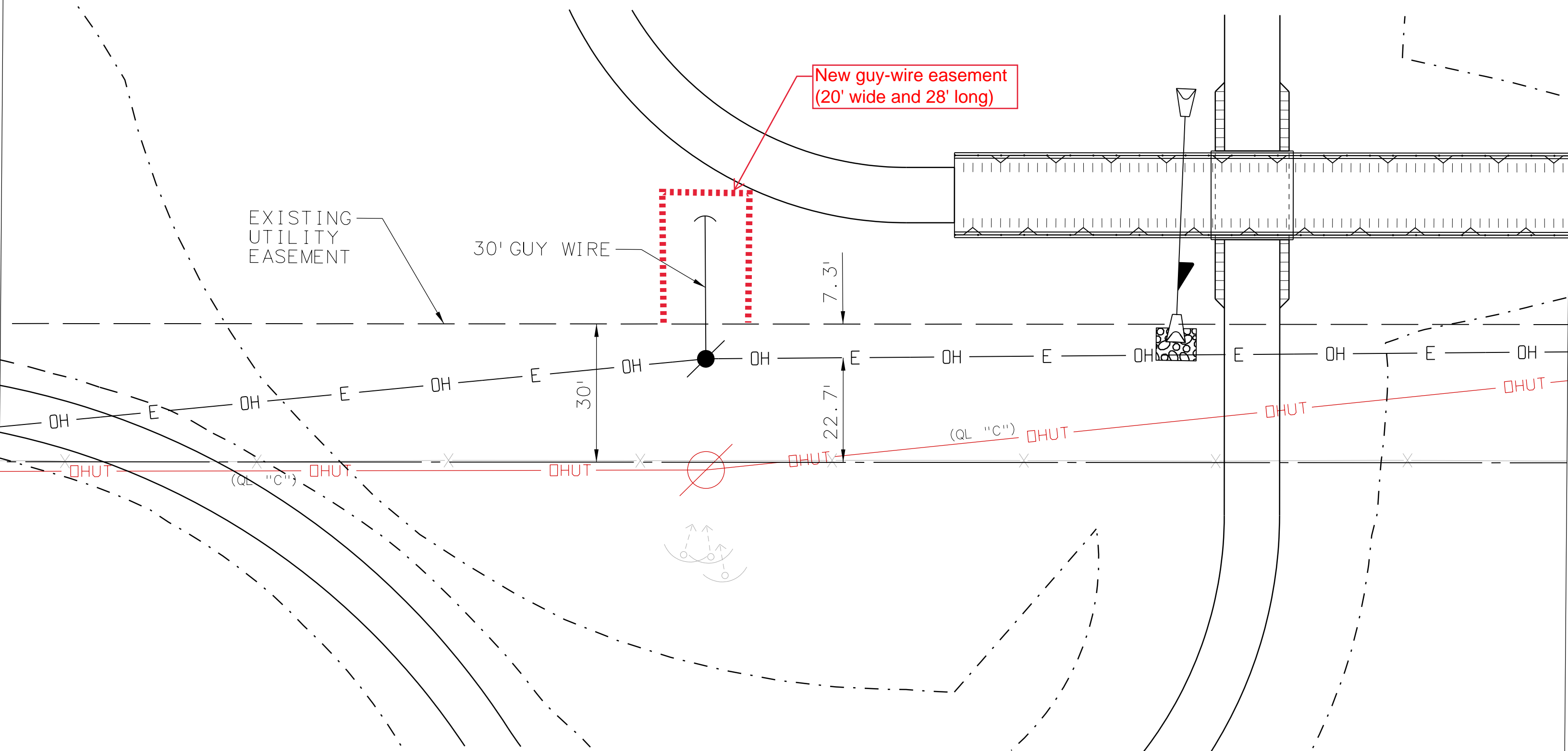
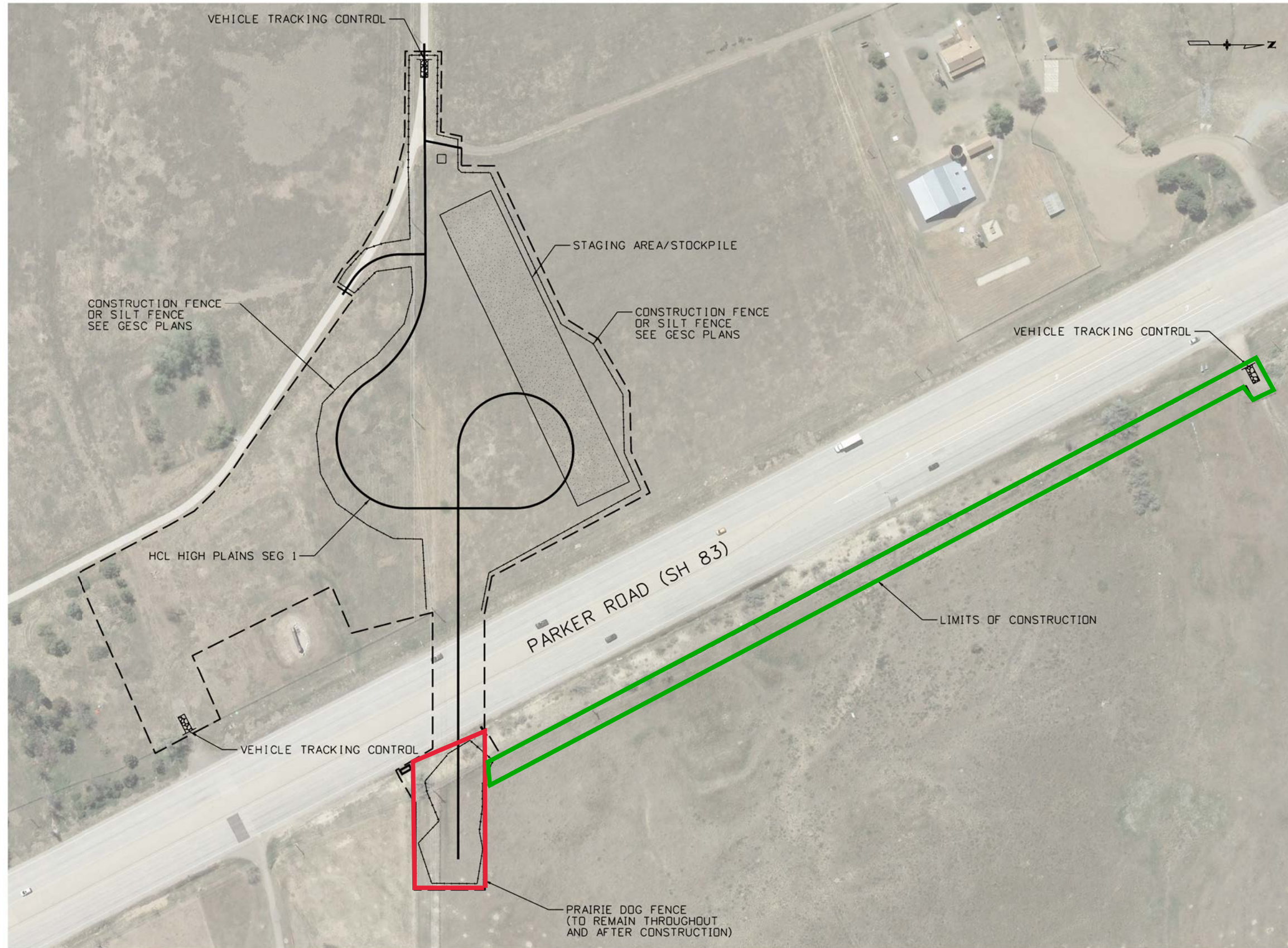




Exhibit D
Kings Point
Easements



PLOT DRIVER: ... \CDDT_PDF - High Quality_ORD.pltcfgr
 PEN TABLE: ... \d0959842\CDDT_PenTable.tbl
 4/22/2021 1:19:18 PM 9628
 High Plains Seg1_41_Initial GESC.dgn

Print Date: 4/22/2021
 File Name: High Plains Seg1_41_Initial GESC.dgn

8000 South Chester Street
 Suite 500
 Centennial, CO 80112
 Phone: 303-799-6806

Sheet Revisions		
Date:	Comments	Init.

ARAPAHOE COUNTY

As Constructed
No Revisions:
Revised:
Void:

**HIGH PLAINS TRAIL
 CHERRY CREEK TRAIL CONNECTOR**

Designer:	A. PANKOW	Checker:	J. ROOT
Detailer:	A. PANKOW	Drawing Number:	1 of 1

Project No./Code	MTF C100-047
	23974
Sheet Number	52