

# Public Health Considerations

January 11, 2022



# Purpose

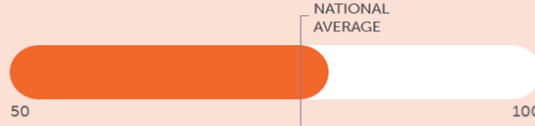
- Provide background information on how public health thinks about its work to help when you are hearing about public health programs and structures over the next 2 months

# Life Expectancy by Zip Code





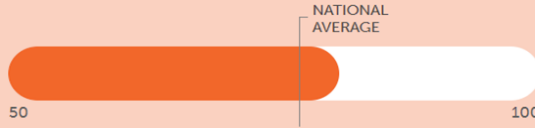
Colorado



80.00  
YEARS



Arapahoe County



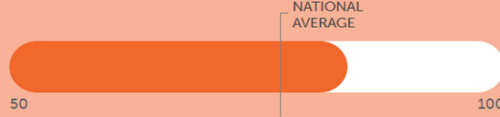
81.12  
YEARS

Zip Code



My Area

Census Tract  
Reference number: 08005005634



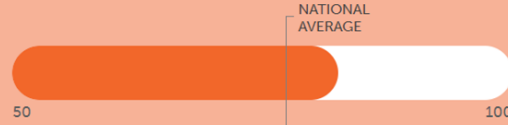
84.10  
YEARS

80120



My Area

Census Tract  
Reference number: 08005007101



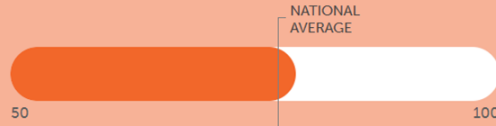
82.60  
YEARS

80105



My Area

Census Tract  
Reference number: 08005084400



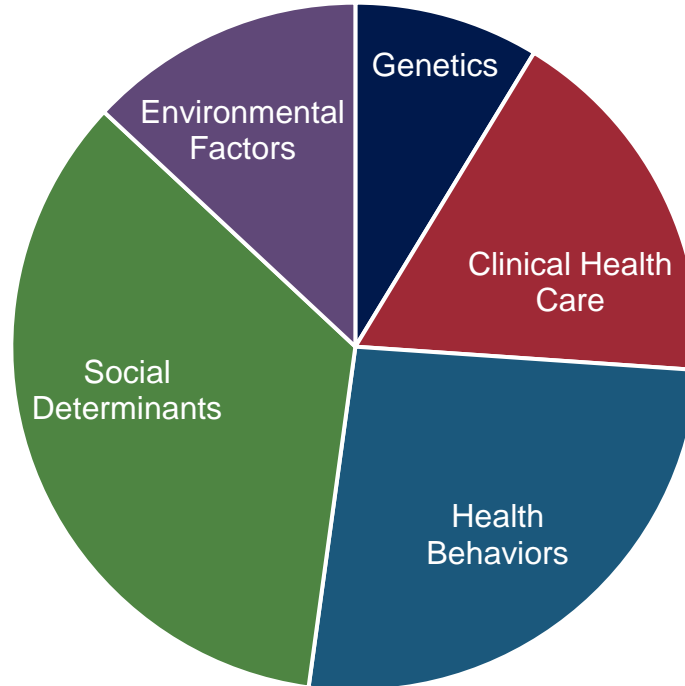
79.20  
YEARS

80113

# What drives health?

- Determinants of health
- Social determinants of health
- Determinants of health care access

# Determinants of Health



# Social Determinants of Health



# Prevention and Population Focus



# Levels of Public Health Practice

- Individual/Family Level
  - Immunizations
  - Maternal Child Health
- Community Level
  - Restaurant inspections
  - Anti-tobacco media campaign
- System Level
  - Zoning laws to control location of industrial or commercial areas
  - Indoor no-smoking laws

# Levels of Prevention

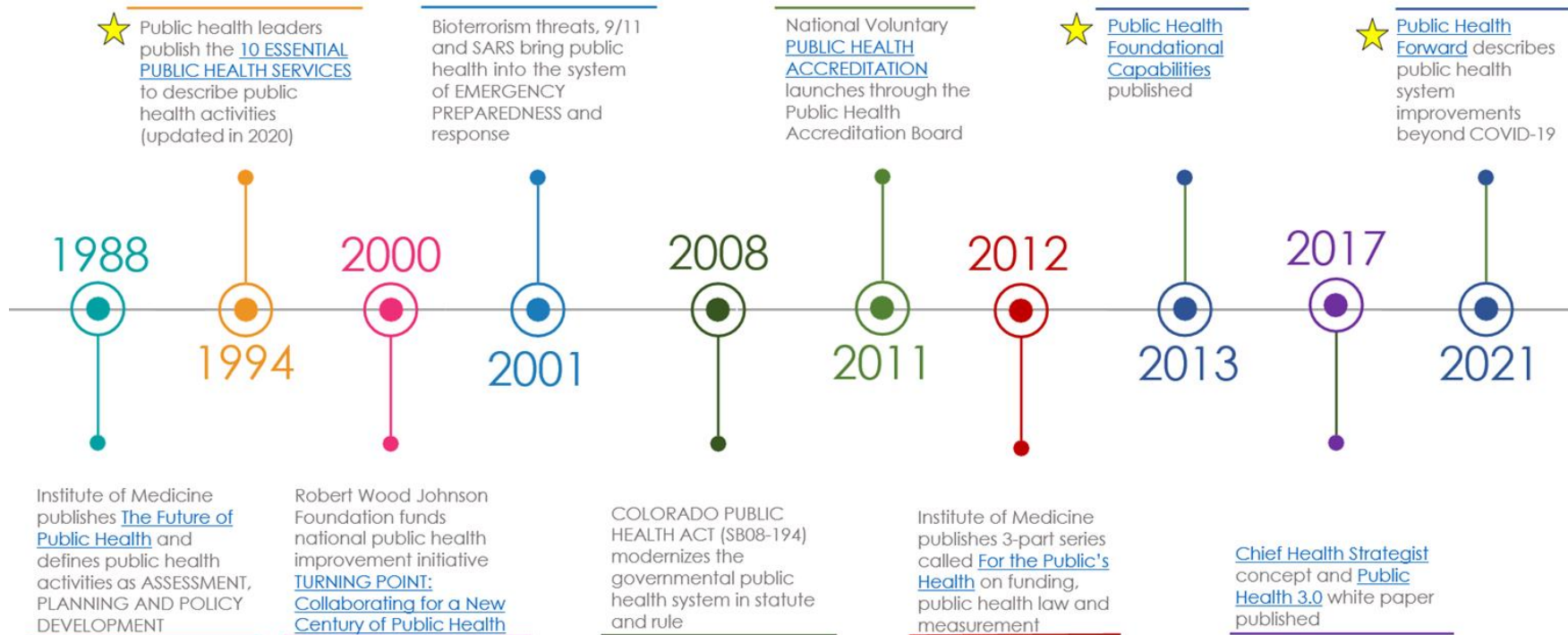
- Primordial Prevention
  - Prevent the conditions that cause injury or disease
  - Focus: Reduce underlying conditions that cause disease
- Primary Prevention
  - Prevent injury or disease in susceptible populations
  - Focus: Reduce incidence
- Secondary Prevention
  - Identify and control the “disease” process in early stages in asymptomatic populations
  - Focus: Reduce prevalence and consequences
- Tertiary Prevention
  - Prevent disability and restore optimal level of functioning in symptomatic populations
  - Focus: Reduce complications and disability

# Examples of Prevention

- Primordial Prevention
  - Minimum wage
  - Water quality regulations
- Primary Prevention
  - Immunizations
  - Tobacco use policies
- Secondary Prevention
  - Air quality monitoring
  - Breast cancer screening
- Tertiary Prevention
  - Brownfield remediation
  - Diabetes management

# Considerations for Public Health Activities

# PUBLIC HEALTH TIMELINE



# Frameworks that help

[Colorado Core Public Health Services](#)

[10 Essential Public Health Services](#)

[Public Health Foundational Capabilities](#)

[Public Health Accreditation Board Standards](#)

# LPHA Considerations

What is required by law and/or rule?

What does our organization have (or need to build) the capacity to do?

What is the role of public health and local government?

What are the community vision, goals, and needs?

What are the program standards and requirements?

[\(LINK TO VIDEO\)](#)



# **Questions and Discussion**