



ARAPAHOE COUNTY
OPEN SPACES

Cheyenne Arapho Park – Construction Funding Request

December 6, 2021



BACKGROUND: west side 2.5 acres



Tsistsistas-Hinono'einihi' Park (Cheyenne / Arapaho Park)

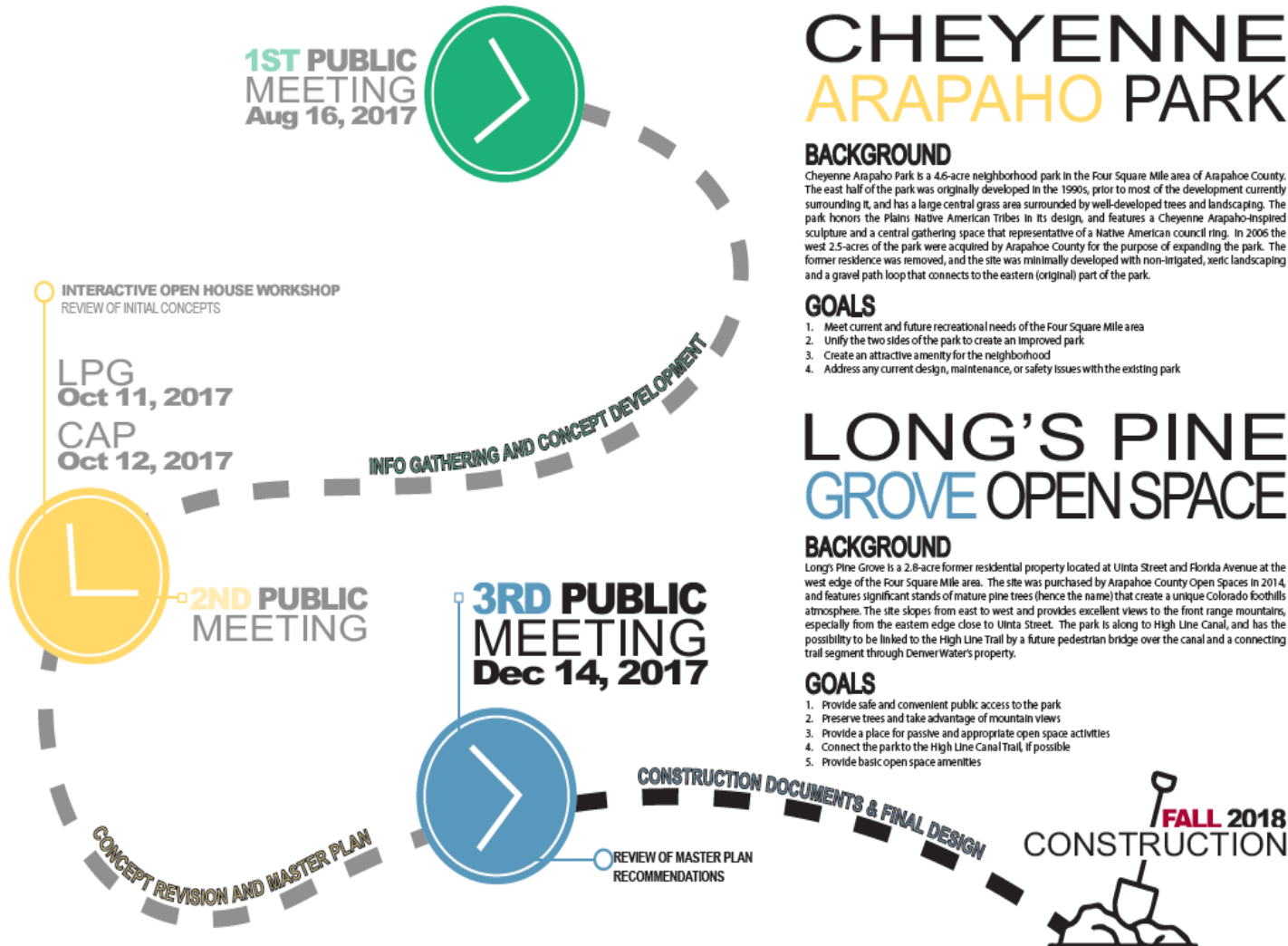
Total Acres: 4.6

Opened in 1986



BACKGROUND

PUBLIC ENGAGEMENT SCHEDULE



questions & comments | email : RWinn@arapahoegov.com

2017 MASTER PLAN CONCEPT

FINAL MASTER PLAN SITE PLAN



2017 MASTER PLAN CONCEPT

FINAL MASTER PLAN PARK CHARACTER



Fig. 3. A bird's eye perspective graphic illustrates how the park improvements fit into the context of the neighborhood.

NEW SHEET

LOCATION AND EXTENT PLAN FOR PAULA-DORA PARK AMENDMENT NO. 1

SITUATED IN THE NORTH $\frac{1}{2}$ OF BLOCK 7 AND NORTH $\frac{1}{2}$ OF BLOCK 6 PAULA-DORA, A SUBDIVISION SITUATED IN THE SOUTHWEST $\frac{1}{4}$ SECTION 22, TOWNSHIP 4 SOUTH, RANGE 67 WEST OF THE 6TH PRINCIPAL MERIDIAN, COUNTY OF ARAPAHOE, STATE OF COLORADO

SITE LEGEND

-  EXISTING TREES
 — EXISTING F CONTOUR
 — EXISTING S CONTOUR
 — PROPOSED F CONTOUR
 — PROPOSED S CONTOUR
 CONCRETE PAVING
 CRUSHER FINES PAVING
 MULCH/PLANTING BED
 SAND PLAY SURFACING
 EMF PLAY SURFACING
 COBBLE SWALE
 PSP PLAY SURFACING
 BENCH
 PICNIC TABLE
 LANDSCAPE BOLDER

- NOTE:
1. PLANS ARE BASED ON THE FINAL CONSTRUCTION DOCUMENTS.
 2. ALL ITEMS PROPOSED UNLESS NOTED AS EXISTING.
 3. ALL PROPOSED CONTOURS TO BE PRECEDED BY "SS", TO CREATE THE ELEVATION HEIGHT IN FEET.

THE OWNERS OF THIS SUBDIVISION, THEIR SUCCESSORS AND ASSIGNS IN THE INTEREST AGREE TO THE RESPONSIBILITY OF MAINTAINING THE PERMANENT BMPs AND/OR STORMWATER FACILITIES ASSOCIATED WITH THIS DEVELOPMENT.

SITE PLAN
CHEYENNE-ARAPAHO PARK
DATE: FEBRUARY 10, 2020
SHEET 2 OF 8

stream
A LIMITED LIABILITY COMPANY
1240 N. COLFAX AVE., STE. 401
DENVER, CO 80202

LOCATION & EXTENT PLAN, CONSTRUCTION DOCUMENTS

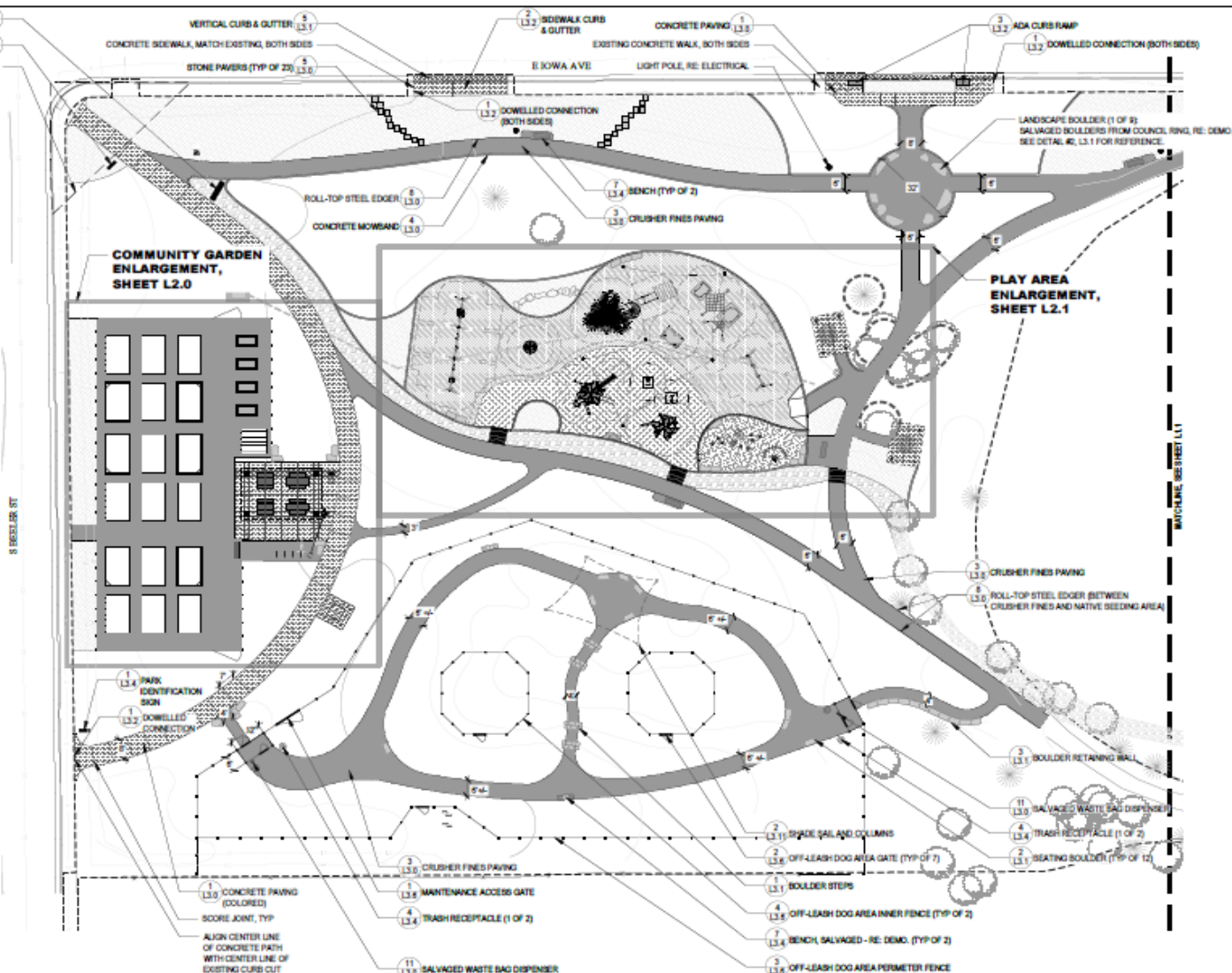


LAYOUT NOTES

1. CONTRACTOR SHALL PROVIDE MOCK-UPS AND SHOP DRAWINGS FOR APPROVAL PER SPECIFICATIONS PRIOR TO CONSTRUCTION.
2. CONTRACTOR SHALL ENSURE THAT LAYOUT AND STAKING OF ALL IMPROVEMENTS IS REVIEWED BY THE OWNER'S REPRESENTATIVE PRIOR TO INSTALLATION.
3. TREES SHALL BE A MINIMUM OF 10' FROM IRRIGATION MAINLINE OR PATHS.
4. CONTRACTOR SHALL BRING ANY DISCREPANCIES OF THE BASE INFORMATION TO THE ATTENTION OF THE OWNER'S REPRESENTATIVE FOR A DECISION PRIOR TO COMMENCING WITH THE WORK. NOTIFICATION OF REQUEST FOR FIELD REVIEW SHALL BE MADE A MINIMUM OF 72 HOURS IN ADVANCE.
5. ONLY REPRESENTATIVE AND CRITICAL LAYOUT DIMENSIONS ARE SHOWN. LINEAR FOOT INDICATIONS ARE APPROXIMATE AND DISTANCES IN THE DRAWINGS SHALL TAKE PRECEDENCE. CONTRACTOR SHALL BE PROVIDED CAD FILES TO FIELD STAKE LOCATIONS OF IMPROVEMENTS.
6. DIMENSIONS SHOWN FOR CRUSHER FINES PAVING AREAS DO NOT INCLUDE EDGER WIDTH, IF APPLICABLE.

LAYOUT LEGEND

- EXISTING TREES
- PROPOSED CONTOUR MAJOR
- PROPOSED CONTOUR MINOR
- CONCRETE PAVING
- CRUSHER FINES PAVING
- MULCH/PLANTING BED
- SAND PLAY SURFACING
- EWI PLAY SURFACING
- COBBLE SHALE
- PEP PLAY SURFACING
- BENCH
- PICNIC TABLE
- LANDSCAPE BOULDER
- CONCRETE MOWBAND
- FENCE
- LIMIT OF WORK



stream
landscape architecture + planning

ALUMINUM LUMBER COMPANY
1244 E. COLGATE AVE. STE. 401
DENVER, CO 80202
720.460.7100

CHEYENNE-ARAPAHO PARK
ARAPAHO COUNTY OPEN SPACE

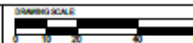
REVISION	DATE	DESCRIPTION
1	11/15/2019	ISSUED FOR CONSTRUCTION

DATE: NOVEMBER 15, 2019
DRAWN BY: CJP
REVIEWED BY: PT

PROVIDER NOTE:
NOT FOR CONSTRUCTION
These drawings and information are intended for informational purposes only and are not intended for construction or other purposes.

SCALE:
100% CD
SHEET TITLE:
LAYOUT PLAN
SHEET NUMBER:

L1.0



1"=20'-0"



FILE INFORMATION:
PROJECT: Cheyenne-Arapaho Park
PROJECT NUMBER: 2019-0001
PROJECT DATE: November 15, 2019
THE DRAWING IS CONTROLLED BY THE CITY OF DENVER AND MAY BE SUBJECT TO CHANGE.

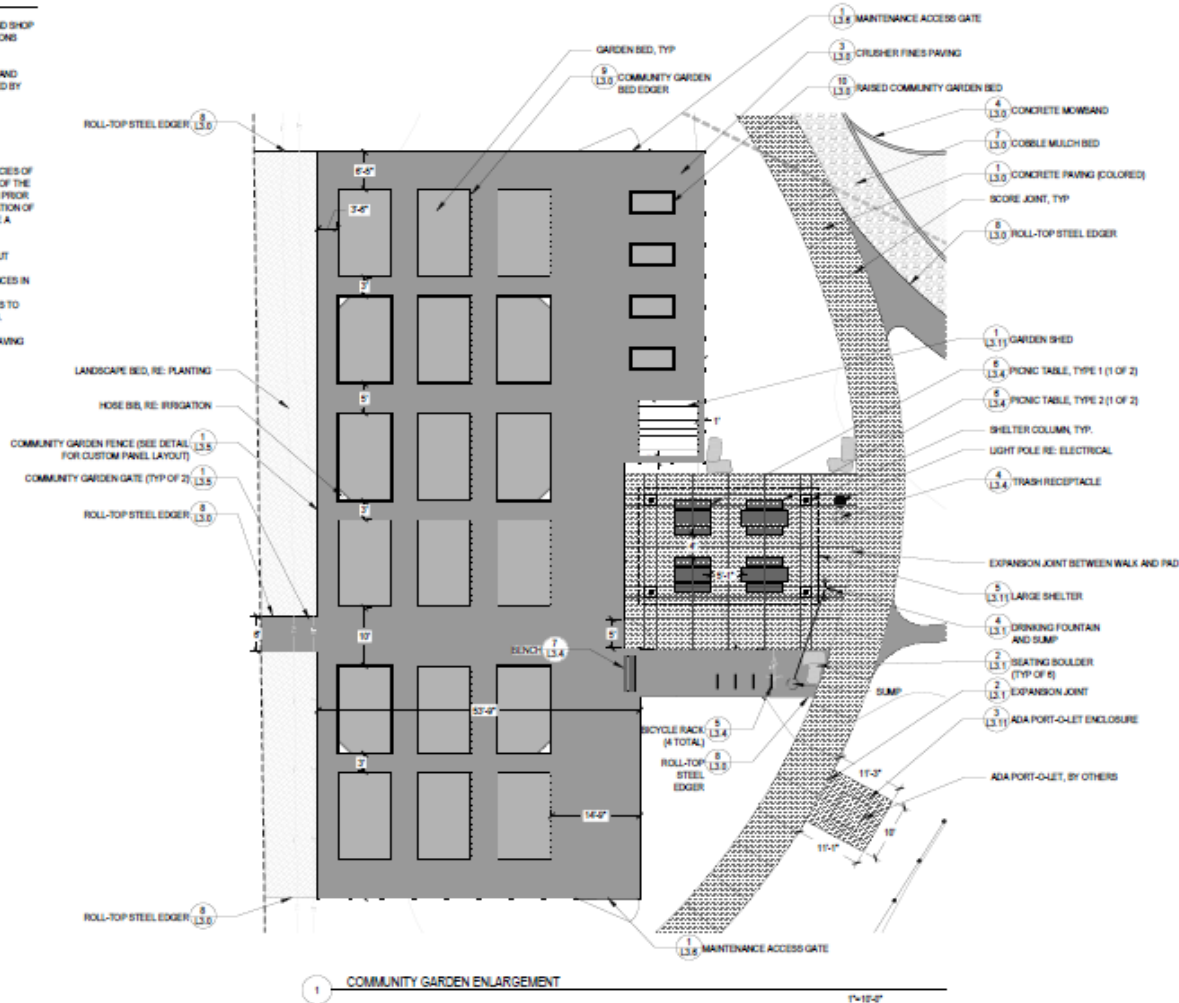
LOCATION & EXTENT PLAN, CONSTRUCTION DOCUMENTS

LAYOUT NOTES

1. CONTRACTOR SHALL PROVIDE MOCK-UPS AND SHOP DRAWINGS FOR APPROVAL PER SPECIFICATIONS PRIOR TO CONSTRUCTION.
2. CONTRACTOR SHALL ENSURE THAT LAYOUT AND STAKING OF ALL IMPROVEMENTS IS REVIEWED BY THE OWNER'S REPRESENTATIVE PRIOR TO INSTALLATION.
3. TREES SHALL BE A MINIMUM OF 10' FROM IRRIGATION MAINLINE OR PATHS.
4. CONTRACTOR SHALL BRING ANY DISCREPANCIES OF THE BASE INFORMATION TO THE ATTENTION OF THE OWNER'S REPRESENTATIVE FOR A DECISION PRIOR TO COMMENCING WITH THE WORK. NOTIFICATION OF REQUEST FOR FIELD REVIEW SHALL BE MADE A MINIMUM OF 72 HOURS IN ADVANCE.
5. ONLY REPRESENTATIVE AND CRITICAL LAYOUT DIMENSIONS ARE SHOWN. LINEAR FOOT INDICATIONS ARE APPROXIMATE AND DISTANCES IN THE DRAWINGS SHALL TAKE PRECEDENCE. CONTRACTOR SHALL BE PROVIDED CAD FILES TO FIELD STAKE LOCATIONS OF IMPROVEMENTS.
6. DIMENSIONS SHOWN FOR CRUSHER FINES PAVING AREAS DO NOT INCLUDE EDGER WIDTH, IF APPLICABLE.

LAYOUT LEGEND

-  EXISTING TREES
-  PROPOSED CONTOUR MAJOR
-  PROPOSED CONTOUR MINOR
-  CONCRETE PAVING
-  CRUSHER FINES PAVING
-  MULCH/PLANTING BED
-  SAND PLAY SURFACING
-  EWF PLAY SURFACING
-  COBBLE SWALE
-  PVP PLAY SURFACING
-  BENCH
-  PICNIC TABLE
-  LANDSCAPE BOULDER
-  CONCRETE MOWBAND
-  FENCE
-  LIMIT OF WORK



1 COMMUNITY GARDEN ENLARGEMENT

1"=10'-0"

stream
 landscape architecture + planning

ALUMINUM LUMBER COMPANY
 1240 S. COLFAX AVE. STE. 401
 DENVER, CO 80202
 720.462.7102

CHEYENNE-ARAPAHO PARK
 ARAPAHO COUNTY OPEN SPACE

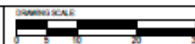
REVISIONS	DATE	DESCRIPTION

DATE: NOVEMBER 15, 2019
 DRAWN BY: CONP
 REVIEWED BY: PT

PROCESSED BY:
 NOT FOR CONSTRUCTION
 These documents are for informational purposes only and are not intended to be used for construction. They are subject to change without notice.

DATE: 11/15/2019
100% CD
 SHEET TITLE:
ENLARGEMENTS
 SHEET NUMBER:

L2.0



1"=10'-0"



FILE INFORMATION:
 FILE NAME: cheyenne-arapaho-park-01.dwg
 FILE PATH: C:\Users\conp\Documents\cheyenne-arapaho-park-01.dwg
 FILE DATE: November 15, 2019
 FILE TIME: 10:00 AM
 THE DRAWING IS CURRENT AND UP-TO-DATE AND MAY BE SUBJECT TO CHANGE.

1. CONTRACTOR SHALL PROVIDE MOCK-UPS AND SHOP DRAWINGS FOR APPROVAL PER SPECIFICATIONS PRIOR TO CONSTRUCTION.
2. CONTRACTOR SHALL ENSURE THAT LAYOUT AND STAKING OF ALL IMPROVEMENTS IS REVIEWED BY THE OWNER'S REPRESENTATIVE PRIOR TO INSTALLATION.
3. TREES SHALL BE A MINIMUM OF 10' FROM IRRIGATION MAINLINE OR PATHS.
4. CONTRACTOR SHALL BRING ANY DISCREPANCIES OF THE BASE INFORMATION TO THE ATTENTION OF THE OWNER'S REPRESENTATIVE FOR A DECISION PRIOR TO BEGINNING WORK. THE WORKING HOURS OF THE NEAREST FIELD REVIEW SHALL BE A MINIMUM OF 72 HOURS IN ADVANCE.
5. ONLY REPRESENTATIVE AND CRITICAL LAYOUT DIMENSIONS ARE SHOWN. LINEAR FOOT INDICATIONS ARE APPROXIMATE, AND DISTANCES IN THE DRAWINGS SHALL TAKE PRECEDENCE. CONTRACTOR SHALL BE PROVIDED CAD FILES TO FIELD STAKE LOCATIONS OF IMPROVEMENTS.
6. DIMENSIONS SHOWN FOR CRUSHER PITS PAYING AREAS DO NOT INCLUDE EDGER WIDTH, IF APPLICABLE.

1. ALL PLAY EQUIPMENT AREAS SHALL HAVE PLAY SAFETY SURFACING WITH DRAINAGE SYSTEM AS SHOWN ON THE DRAWINGS OR AS INDICATED IN THE SPECIFICATIONS.
2. ALL PLAY EQUIPMENT WITHIN PLAY PIT REQUIRE A MINIMUM OF A 4'-0" USE ZONE PER MANUFACTURER, ASTM, AND CPSC RECOMMENDATIONS. THE CONTRACTOR SHALL COORDINATE INSTALLATION WITH EACH PLAY EQUIPMENT MANUFACTURER AND/OR INSTALLER.
3. CONTRACTOR TO COORDINATE WITH PLAY EQUIPMENT MANUFACTURERS AND INSTALLERS TO ENSURE THAT THE DEPTH OF ALL PLAY SAFETY SURFACING SHALL MEET CRITICAL FALL HEIGHT REQUIREMENTS FOR EACH PLAY COMPONENT AND FEATURE, INCLUDING CUSTOM ELEMENTS ACCORDING TO MANUFACTURER, ASTM, AND CPSC RECOMMENDATIONS. PLAY SAFETY SURFACING INCLUDING POLYURETHANE RUBBER SURFACING, EPDM, AND SAND. SEE PLANS FOR LOCATIONS. REFER TO P.I.P. DEPTH DIAGRAM ON SHEET G11-0.
4. NON-PLAY ELEMENTS (E.G. PAVING, BOLLARDS, STEPPING STONES, RAILINGS, SEAT WALLS, ETC.) INSIDE OF THE PLAY PIT SHALL BE COORDINATED AND INSTALLED TO MEET USE AND FALL ZONE REQUIREMENTS WITH EDGE OF PLAY EQUIPMENT.
5. CONTRACTOR SHALL INSTALL PLAYGROUND EDGES AND WALLS AS SHOWN ON THE PLANS TO ALLOW FOR INSTALLATION LOCATIONS AND ORIENTATION OF PLAY EQUIPMENT AS SHOWN ON THE PLANS WITH REQUIRED USE ZONES. THE CONTRACTOR SHALL COORDINATE INSTALLATION WITH PLAY EQUIPMENT INSTALLERS AS NECESSARY TO ENSURE THAT NO OBSTRUCTIONS ARE CONSTRUCTED IN THE SAFETY USE ZONES AS SHOWN.

- EXISTING TREES**
- PROPOSED CONTOUR MAJOR
- PROPOSED CONTOUR MINOR
- CONCRETE PAVING
- CRUSHER FINES PAVING
- MULCH/PLANTING BED
- SAND/PLAY SURFACING
- EWF PLAY SURFACING
- COBBLE DRIVEL
- HIP PLAY SURFACING
- BENCH
- PICNIC TABLE
- LANDSCAPE BOULDER
- CONCRETE MOWSAND
- FENCE
- LIMIT OF WORK

stream
 landscape architecture • planning
 A LIMITED LIABILITY COMPANY
 1240 E. COLFAX AVE. STE. 401
 DENVER, CO 80202
 720.363.7332

CHEYENNE-ARAPAHO PARK
ARAPAHO COUNTY OPEN SPACE

[illegible]

DATE: NOVEMBER 15, 2019
DRAWN BY: CGMP
REVIEWED BY: RT

PROGRESSIVITY:
NOT FOR CONSTRUCTION
These documents are incomplete
and are released for review only
and are not intended for regulatory
approval, bidding, permits, or
construction contracts.

695

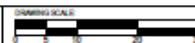
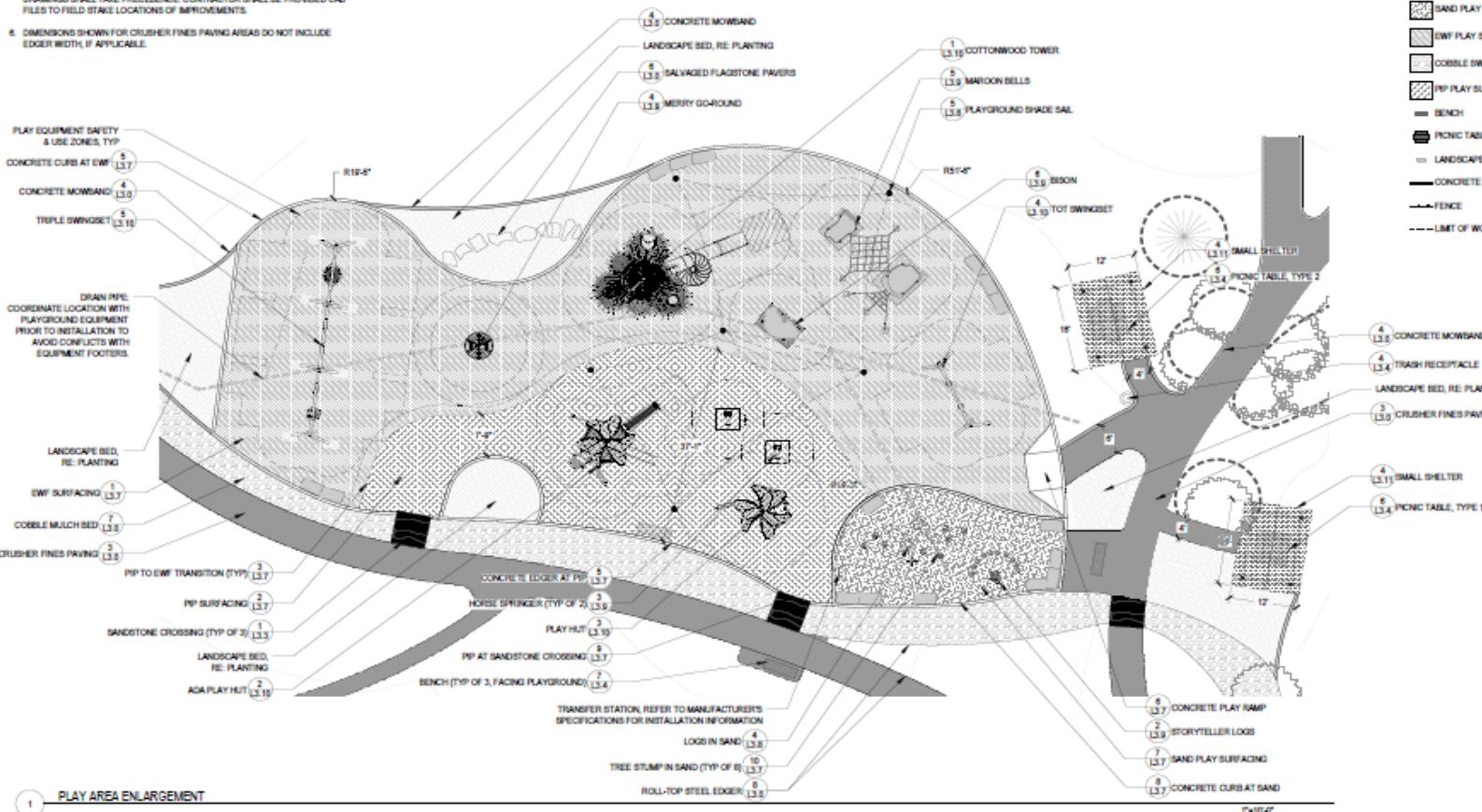
100% CD

QUESTIONS:

ENLARGEMENTS

QUESTIONS

L2.1

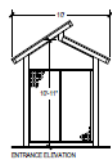
 $1'' \approx 10'-0''$ 

FILE MANAGEMENT:
FILE NAME: *changelogs_mails_changelogs_mails.pdf* (2017-07-12 14:24:56) (LGA) Logos (LGA)
PDF FILE: *changelogs_mails.pdf*
FILE SIZE: 10,000,000
THE CHANNEL IS CURRENT AS OF FILE SIZE AND MAY BE IN SUBJECT TO CHANGE.

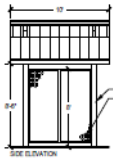
LOCATION & EXTENT PLAN, CONSTRUCTION DOCUMENTS

NEW SHEET

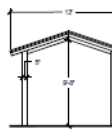
CHEYENNE-ARAPA LOCATION AND EXTENT PLAN FOR PAULA-D SITUATED IN THE NORTH 1/2 OF BLOCK 7 AND NORTH 1/2 OF BLOCK 6 PAULA-D, A SUBDIVISION SITUATED IN THE SOUTHWEST 1/4 SECTION 22, TOWNSHIP 4 SOUTH, RANGE 67 WEST OF THE 6TH PRINCIPAL MERIDIAN



1 ADA PORT-A-LET ENCLOSURE

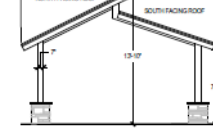
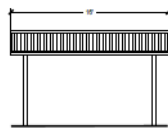


NOTES:
1. (1) PORT-NORTHWEST MODEL, BY CLASSIC RECREATION SYSTEMS.
2. ENCLOSURE SHALL BE DESIGNED TO ACCOMMODATE AN ADA-SIZED PORT-A-LET (APPROXIMATELY 18" X 36").

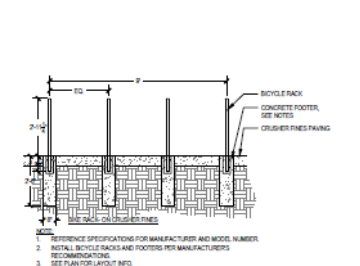
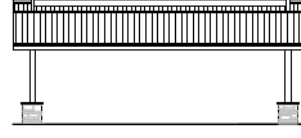


2 SHADE SHELTERS

SMALL SHELTERS:
(1) PORT-NORTHWEST MODEL, BY CLASSIC RECREATION SYSTEMS.
(2) SHADE HEIGHT: 11'-0" (11'-0" ROOF HEIGHT AT RIDGE)

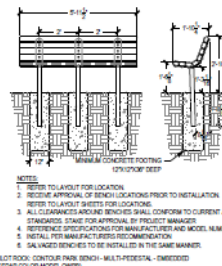


LARGE SHELTERS:
(1) PORT-NORTHWEST MODEL, BY CLASSIC RECREATION SYSTEMS.
(2) MIN. CLEARANCE: 13'-0" (13'-0" ROOF HEIGHT AT RIDGE)



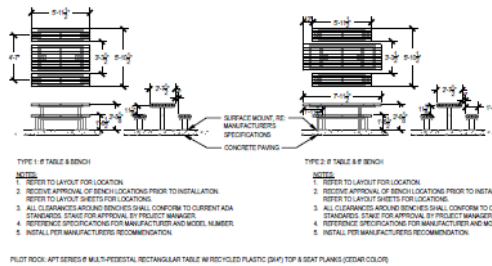
3 BIKE RACK

PLANT ROOM: MODEL 300-3 (EMBEDDED POST) SADDLEBACK BIKE RACK
NTS



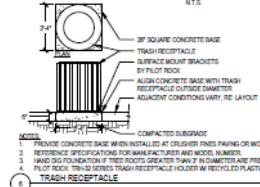
4 BENCH

PLANT ROOM: CONTAINERS PARK BENCH - MULTI-PEDESTAL - (EMBEDDED)
(STAR COLOR MODEL, CMRS)



5 PICNIC TABLE

PLANT ROOM: ART SERIES 8 MULTI-PEDESTAL RECTANGULAR TABLE IN RECYCLED PLASTIC (GRAY TOP & SEAT PLANKS) (STAR COLOR)



6 TRASH RECEPTACLE

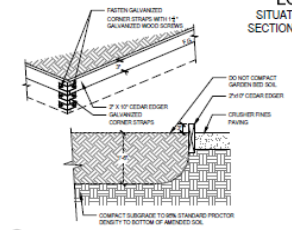
NOTE: THESE IMAGES ARE INTENDED TO REPRESENT THE VISION FOR CHEYENNE-ARAPAHO PARK AND ARE SUBJECT TO CHANGE. THEY DEPICT THE PROPOSED CHARACTER OF THE PARK AND HAVE PROVIDED INSPIRATION FOR THE DESIGN.

CASE # AA18-009

NEW SHEET

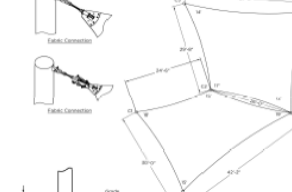
CHEYENNE-ARAPAHO PARK

LOCATION AND EXTENT PLAN FOR PAULA-DORA PARK AMENDMENT NO. 1
SITUATED IN THE NORTH 1/2 OF BLOCK 7 AND NORTH 1/2 OF BLOCK 6 PAULA-DORA, A SUBDIVISION SITUATED IN THE SOUTHWEST 1/4
SECTION 22, TOWNSHIP 4 SOUTH, RANGE 67 WEST OF THE 6TH PRINCIPAL MERIDIAN, COUNTY OF ARAPAHO, STATE OF COLORADO



1 COMMUNITY GARDEN PLOT EDGER

NTS



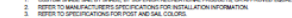
2 PLAYGROUND SHADE SAIL

NTS



3 PLAYGROUND SHADE SAIL

NTS



4 PLAYGROUND SHADE SAIL

NTS



5 PLAYGROUND SHADE SAIL

NTS



6 PLAYGROUND SHADE SAIL

NTS



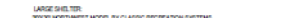
7 PLAYGROUND SHADE SAIL

NTS



8 PLAYGROUND SHADE SAIL

NTS



9 PLAYGROUND SHADE SAIL

NTS



10 PLAYGROUND SHADE SAIL

NTS



11 PLAYGROUND SHADE SAIL

NTS



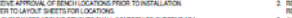
12 PLAYGROUND SHADE SAIL

NTS



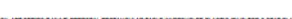
13 PLAYGROUND SHADE SAIL

NTS



14 PLAYGROUND SHADE SAIL

NTS



15 PLAYGROUND SHADE SAIL

NTS



16 PLAYGROUND SHADE SAIL

NTS



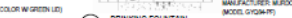
17 PLAYGROUND SHADE SAIL

NTS



18 PLAYGROUND SHADE SAIL

NTS



19 PLAYGROUND SHADE SAIL

NTS



20 PLAYGROUND EQUIPMENT

NTS



21 PLAYGROUND EQUIPMENT

NTS



22 PLAYGROUND EQUIPMENT

NTS



23 PLAYGROUND EQUIPMENT

NTS



24 PLAYGROUND EQUIPMENT

NTS



25 PLAYGROUND EQUIPMENT

NTS



26 PLAYGROUND EQUIPMENT

NTS



27 PLAYGROUND EQUIPMENT

NTS



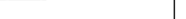
28 PLAYGROUND EQUIPMENT

NTS



29 PLAYGROUND EQUIPMENT

NTS



30 PLAYGROUND EQUIPMENT

NTS



31 PLAYGROUND EQUIPMENT

NTS



32 PLAYGROUND EQUIPMENT

NTS



33 PLAYGROUND EQUIPMENT

NTS



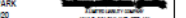
34 PLAYGROUND EQUIPMENT

NTS



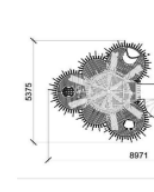
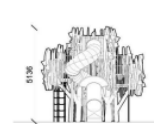
35 PLAYGROUND EQUIPMENT

NTS



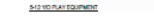
36 PLAYGROUND EQUIPMENT

NTS



37 PLAYGROUND EQUIPMENT

NTS



38 PLAYGROUND EQUIPMENT

NTS



39 PLAYGROUND EQUIPMENT

NTS



40 PLAYGROUND EQUIPMENT

NTS



41 PLAYGROUND EQUIPMENT

NTS



42 PLAYGROUND EQUIPMENT

NTS



43 PLAYGROUND EQUIPMENT

NTS



44 PLAYGROUND EQUIPMENT

NTS



45 PLAYGROUND EQUIPMENT

NTS



46 PLAYGROUND EQUIPMENT

NTS



47 PLAYGROUND EQUIPMENT

NTS



48 PLAYGROUND EQUIPMENT

NTS



49 PLAYGROUND EQUIPMENT

NTS



50 PLAYGROUND EQUIPMENT

NTS



51 PLAYGROUND EQUIPMENT

NTS



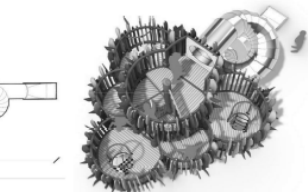
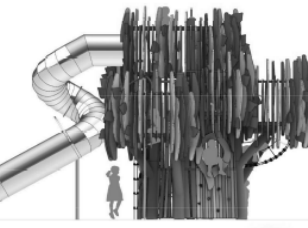
52 PLAYGROUND EQUIPMENT

NTS



53 PLAYGROUND EQUIPMENT

NTS



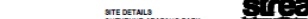
54 PLAYGROUND EQUIPMENT

NTS



55 PLAYGROUND EQUIPMENT

NTS



56 PLAYGROUND EQUIPMENT

NTS



57 PLAYGROUND EQUIPMENT

NTS



58 PLAYGROUND EQUIPMENT

NTS



59 PLAYGROUND EQUIPMENT

NTS



60 PLAYGROUND EQUIPMENT

NTS



61 PLAYGROUND EQUIPMENT

NTS



62 PLAYGROUND EQUIPMENT

NTS



63 PLAYGROUND EQUIPMENT

NTS



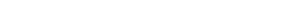
64 PLAYGROUND EQUIPMENT

NTS



65 PLAYGROUND EQUIPMENT

NTS



66 PLAYGROUND EQUIPMENT

NTS



Staff Recommends:

BoCC approval of the expenditure of up to \$2,400,000 of Open Space Acquisition and Development funds and \$308,000 in Four Square Mile CIL funds for Construction of Cheyenne Arapaho Park

- Open Space & Trails Advisory Board recommended funding approval on Feb. 24, 2020.

Next Steps:

Issue RFP: Early 2022

Start Construction: Spring 2022

Completion Estimated: Fall 2022

THANK YOU
