

**We Fund  
Culture.**

**SCFD**



**We were born in  
a bear market.**

**1987**

**SCFD**

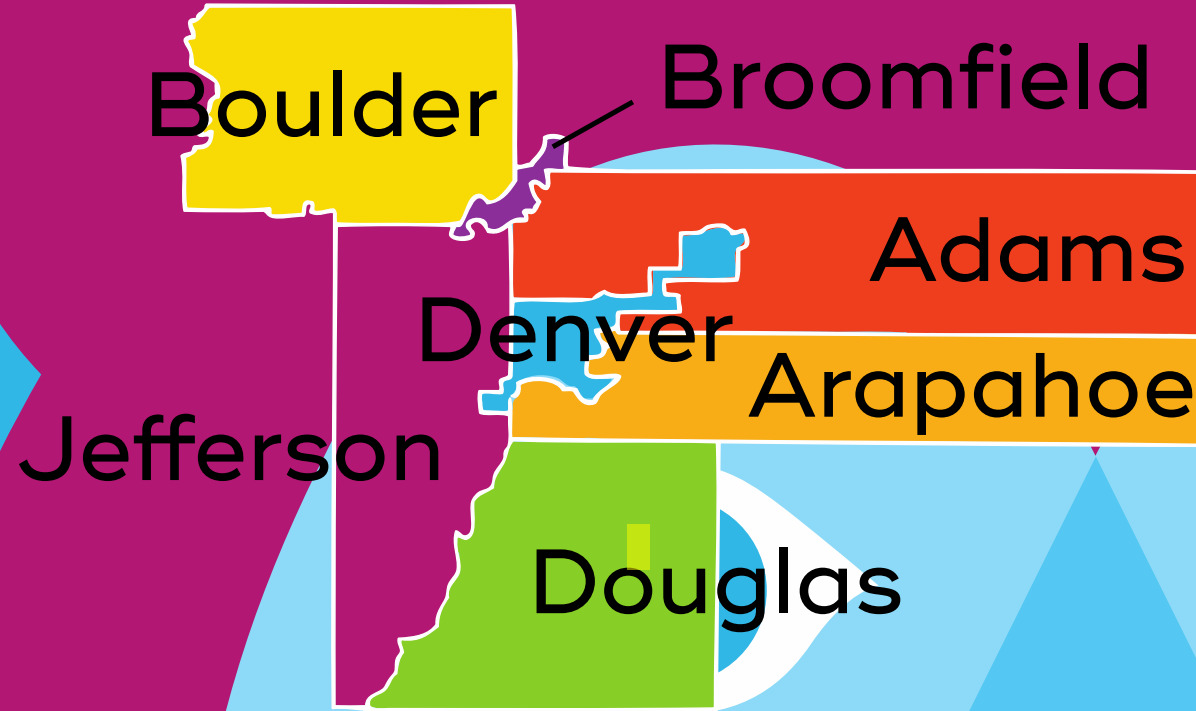
# HOW SCFD WORKS

For every **\$10 spent** in the metro Denver area, **one penny** of the sales tax goes directly to arts, culture and science organizations of all sizes with nearly **300** organizations funded.



**SCFD**

# SCFD Map



**SCFD**

# SCFD Structure



\* One appointed from each of the seven counties and four appointed by the Governor (11 total)

**SCFD**

# WHAT'S THE IMPACT?

**13,392**  
creative sector  
jobs\*

**15 million**  
people served\*

**4**  
**million**  
children  
engaged\*



**\$2.3 billion**  
in economic activity\*

**300+**  
organizations funded

**30+ years**  
of voter approval

**\$64**  
**million**  
in stabilizing  
funding during  
pandemic  
shutdown  
in 2020

\*2019 Data

**During the pandemic shutdown in 2020,  
most key indicators dropped:**



**Economic  
Activity**

**Jobs**

**Economic  
Impact**

**Attendance**



# HOW SCFD WORKS

Funding is granted by:



Statute



Quantification



County  
Decision-making

SCFD



# SCFD Nitty-gritty

This money is then given out annually to qualifying organizations in three ways:

1

(By statute)  
Largest National  
Organizations

2

(By statute and  
qualifying) Regional  
Organizations

3

(By county process)  
Local Organizations

SCFD

# Arapahoe County

## **Tier III** orgs based in Arapahoe County

- Received \$ 1,373,805.87 in 2021

## **Tier II** orgs based in Arapahoe County

- Received \$1,631,088.15 in 2021

## **Tier I**

- Denver Botanic Gardens-  
Plains Conservation Center

## **2021 Tier III Arapahoe County Cultural Council**

- Distributed \$ 2,282,528.68 to 89 organizations

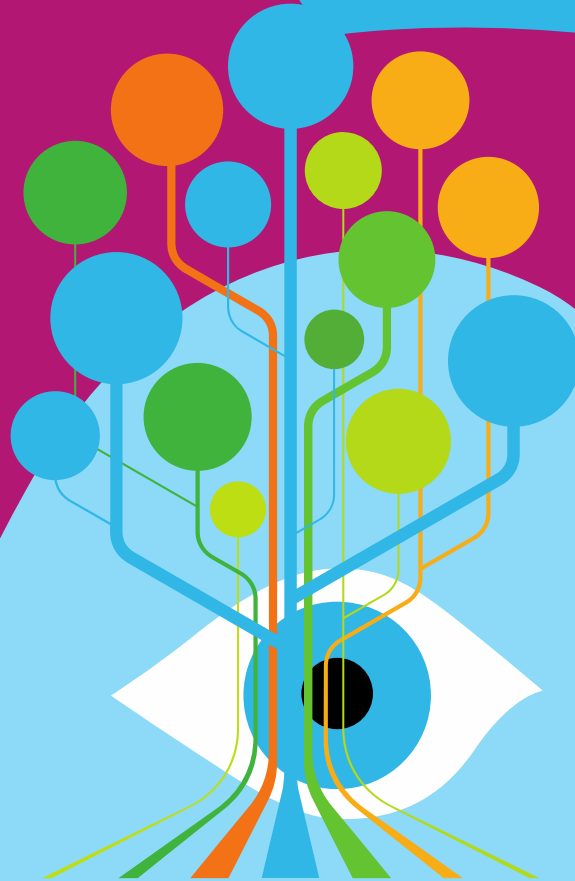
**SCFD**

# SCFD All Grown Up

## 1989

- 6 counties
- 1.8M Population
- 134 Organizations
- 14M distribution

SCFD



## 2022

- 7 counties
- 3.2M Population
- 300+ Organizations
- 75M distribution

