



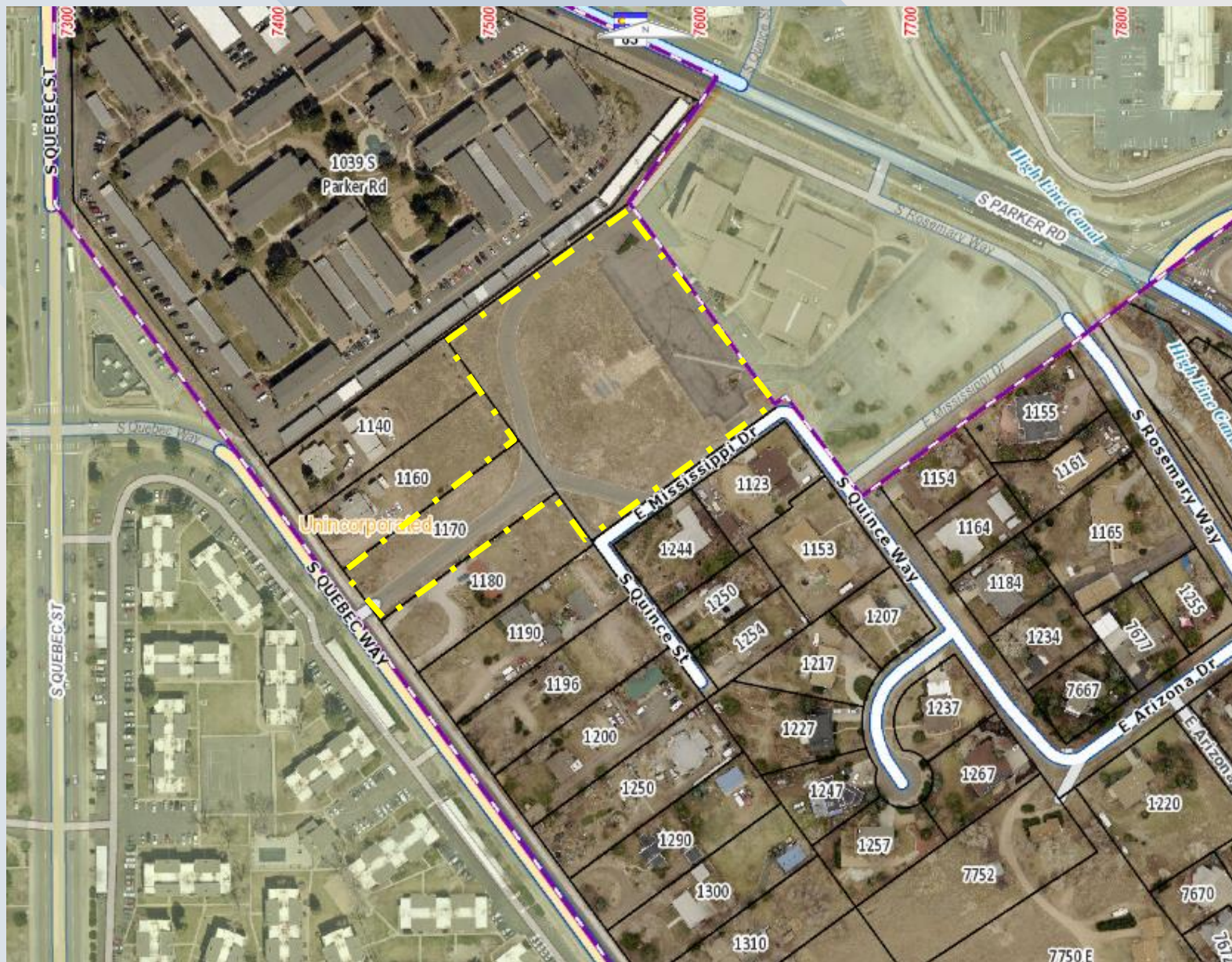
ARAPAHOE COUNTY

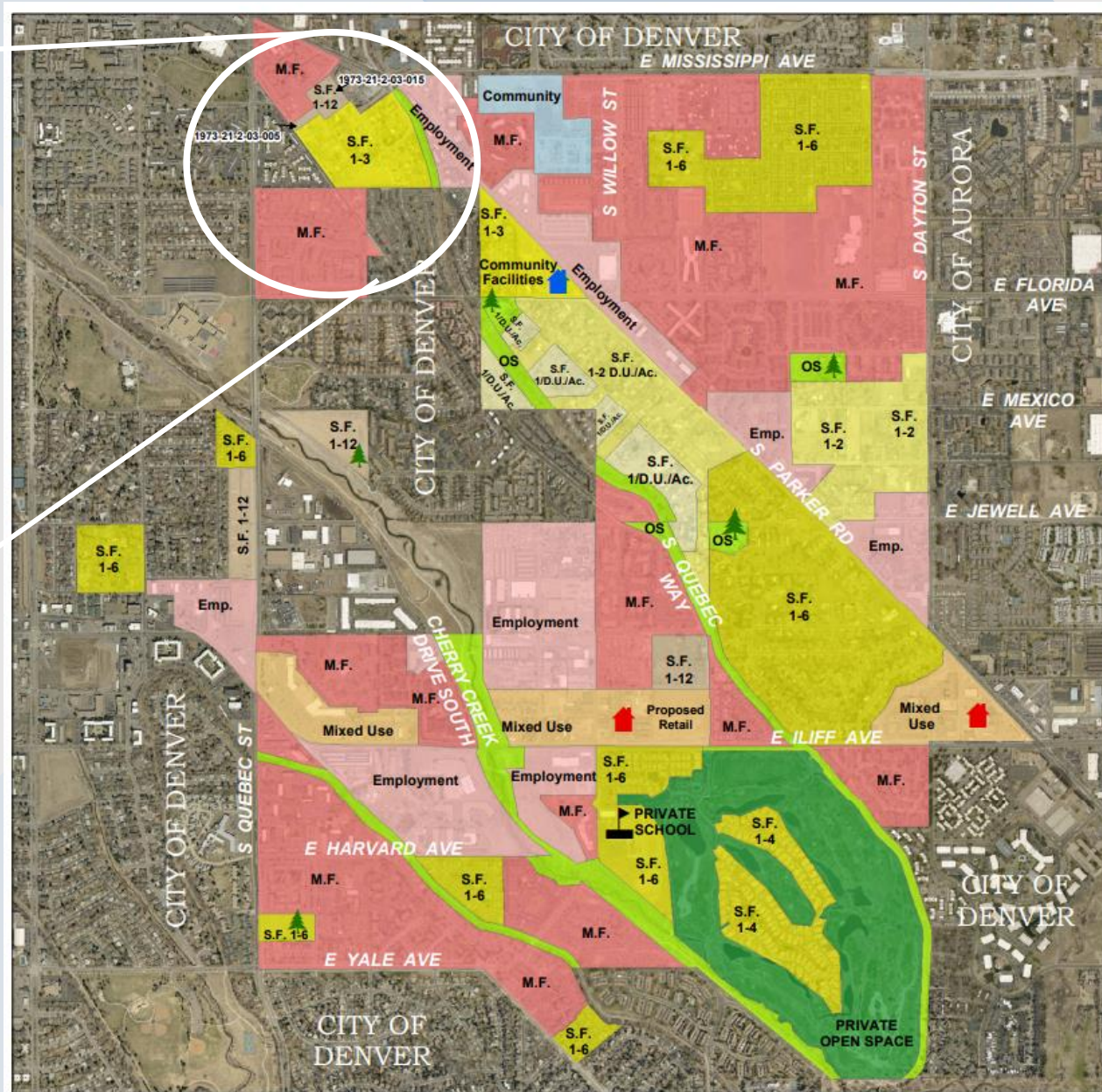
Quebec Way Proposed Plan Amendment Four Square Mile Sub-Area Plan LR22-003

Arapahoe County Planning Commission
Public Hearing, November 15, 2022



Vicinity Map and Aerial


















Amended by the Arapahoe County
Planning Commission
November 15, 2016

Administrative Amendment 03/07/2017
Amended Case # LR21-002 11/08/2021

LAND USE

-  COMMUNITY
 EMPLOYMENT
 MF
 MU
 OS
 PRIVATE OS
 SF 1
 SF 1-12
 SF 1-2
 SF 1-3
 SF 1-6

-  Potential Park/Open Space
-  Potential Mixed Use Town Center
-  Community Center/Library



ARAPAHOE COUNTY
PUBLIC WORKS & DEVELOPMENT

General Disclaimer:
 Arapahoe County Makes No Representation Or Warranty As To The
 Accuracy Of This Base Map, And Assumes No Responsibility Or
 Liability To Any User. This Base Map Is Not A Legal Document. It
 Is Intended To Serve As An Aid In Graphic Representation Only.

Date Saved: 10/27/2022 3:54:27 PM

Downloaded At: 11:53 11 September 2009



Plan Amendment Criteria

- Consistency with the vision, guiding principles, intent, goal, and policies of the Comprehensive Plan.
- Compatibility with surrounding land uses and zoning.
- Compatibility with existing, natural, and environmental conditions of the proposed amendment and preservation of important natural features, riparian corridors, wildlife habitat and movement corridors, and cultural resources.
- Adequacy of the water supply, water and sewer treatment facilities, transportation networks, accesses, emergency services, school facilities, and parks and trails to serve or support the land uses associated with the proposed amendment.
- Capability of affected special districts to adequately meet anticipated service demand.
- Changing social, economic, or land use conditions within the area that warrant the Comprehensive Plan amendment.



Staff Recommendation and Suggested Findings

Staff recommends approval based on findings found on pages 9 – 10 of the staff report, and with the following condition:

An attachment to this report illustrates the changes to be made to the Four Square Mile Sub-Area Plan Map if the Planning Commission approves the request. Staff, in conjunction with the County Attorney's Office, is hereby authorized to update the map.



ARAPAHOE COUNTY

Thank You

Questions?