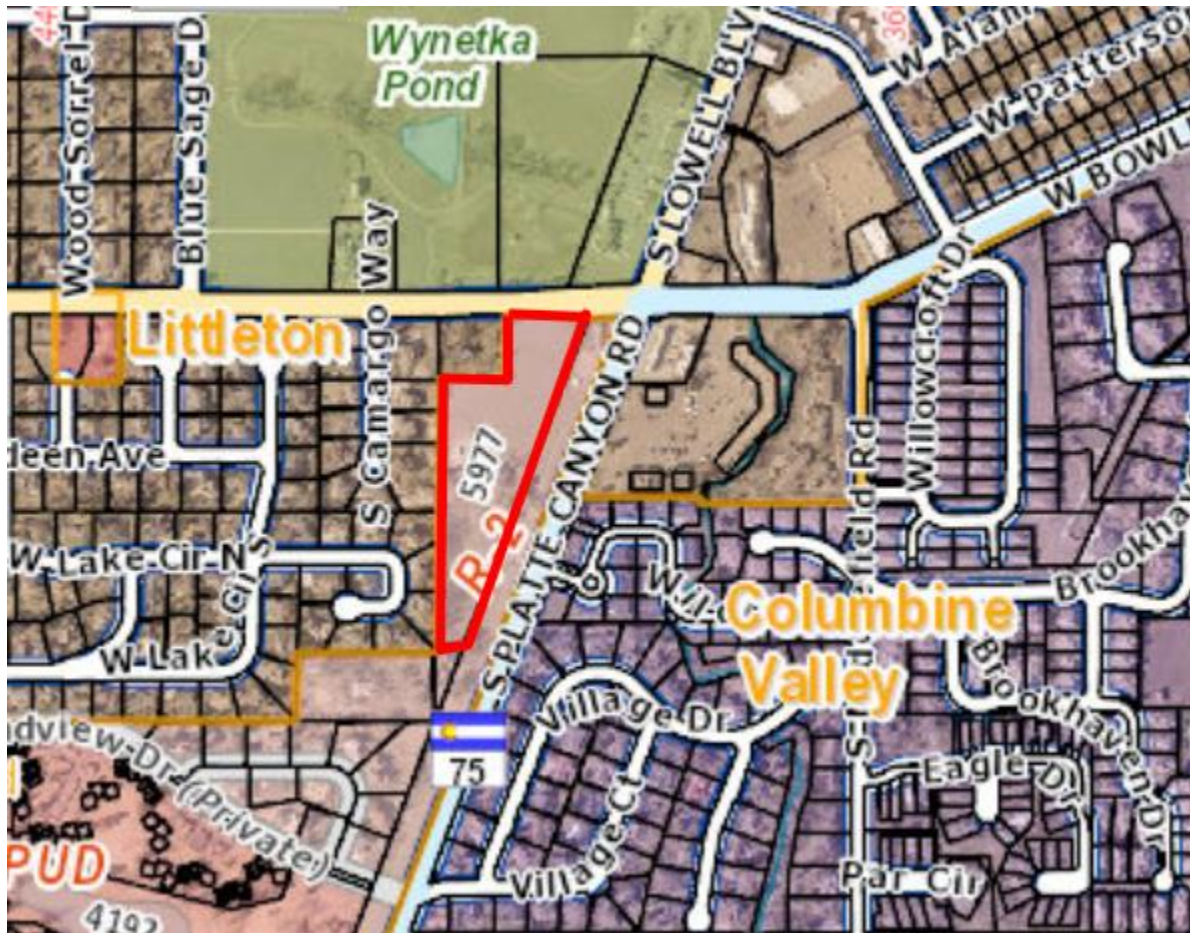


## **LOCATION & VICINITY MAP**

The proposed development is located southwest of the intersection of West Bowles Avenue and South Platte Canyon Road. This proposal is located in Commissioner's District #1.



*Location & Zoning of Millstone at Columbine*

## **ADJACENT SUBDIVISIONS, ZONING, AND LAND USE**

	<b>Zoning</b>	<b>Land Use</b>	<b>Subdivision</b>
<b>North</b>	Littleton – R-E & OS	Single-Family & Open Space/Park across W Bowles Ave	N/A & Wynetka Ponds Subdivision
<b>East</b>	R-2	Denver Water Board	N/A
<b>South</b>	R-2	Single-Family	N/A
<b>West</b>	Littleton – R-2	Single-Family	The Hamlet at Columbine